

# UQCCR

2010 ANNUAL REPORT



THE UNIVERSITY  
OF QUEENSLAND  
AUSTRALIA

# CONTENTS

MESSAGE FROM THE CENTRE DIRECTOR ..... 4

HIGHLIGHTS OF 2010 ..... 6

EVOLUTION OF THE CENTRE ..... 10

FELLOWSHIPS AND AWARDS ..... 18

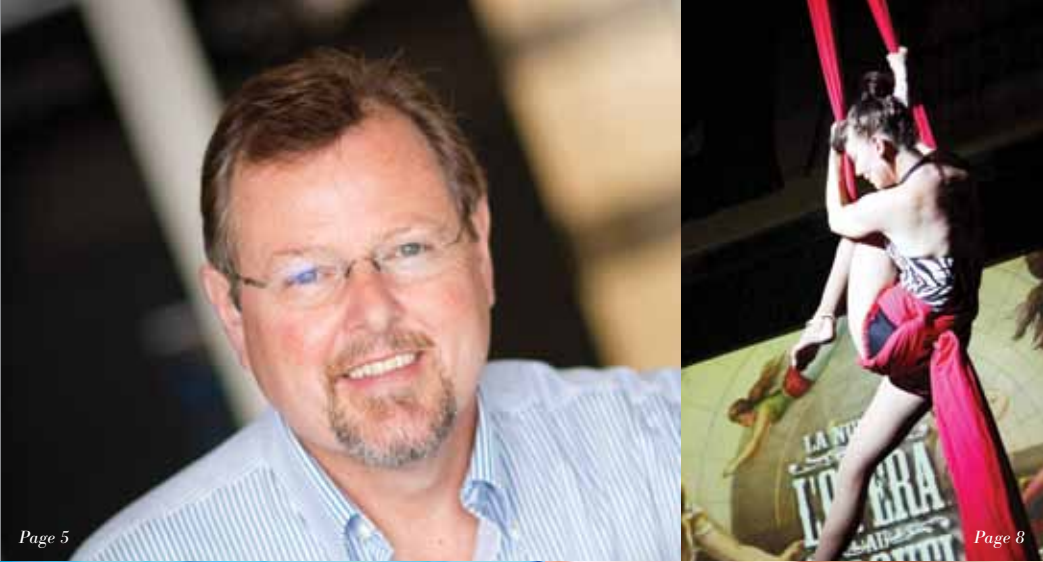
RESEARCH HIGHER DEGREE STUDENT PROFILES ..... 28

CLINICAL COLLABORATION ..... 38

COMMUNITY AND OUTREACH ..... 44

FUTURE RESEARCH ..... 48

APPENDICES ..... 52



Page 5

Page 8



Page 15

Page 23



Page 27

Page 32



Page 35

Page 46

PUBLICATION

**Editors** Tracey Henshaw and Carmen Buttery

**Publisher** UQCCR

**Date** April 2011

**Place of Publication** Brisbane, Australia



# MESSAGE *from the* CENTRE DIRECTOR

*Far Right*  
PROFESSOR  
MURRAY MITCHELL

My first year as Director has been highly rewarding and marked by significant growth and development of the Centre. Thanks are due to my predecessor Professor Nicholas Fisk for building the foundation for this development. Following a stimulating and successful retreat, we have revisited and revised our mission statement and vision for the Centre. This led also to the reorganisation of the Centre into four themes viz Cancer, Brain and Mental Health, Infection and Immunity, and Mothers, Babies and Lifelong Health. Emphasis on The University of Queensland Centre for Clinical Research (UQCCR)'s special clinical niche was provided with the appointment of two leaders for each theme—one a practising clinician and one a basic scientist. The mean H index of the theme leaders of 33 is mute testimony to the quality of research-oriented staff that we have in the Centre. Our dedication to improving health outcomes was clearly enunciated and reflected in the welcome pressure on our clinical rooms with increasing numbers of investigators wishing to use them for their studies; and by the recruitment of leading researchers and their teams, from a diversity of research areas including neuroethics, allied health and psychiatry. To further enhance our ability to translate our research into improved health outcomes Professor Gregory Rice joined UQCCR as Deputy Director for Translational Medicine (*see Page 8*).

We have made great strides in introducing new cutting edge platform technologies to give our researchers a competitive edge in advancing their research. For instance, the UQCCR Imaging Annex is now funded and we hope to have a building and facilities in place for opening in 2012. This has seen an unparalleled degree of cooperation between Queensland Institute of Medical Research, Queensland Health, Queensland University for Technology and ourselves in The University of Queensland – a great precedent for the future.

We are actively developing a new Clinical Applications Facility that will reduce the time for research findings to be translated into practice and thus enhance health outcomes significantly. This exciting Facility will focus on proteins and lipids initially, and will have a sister facility for clinical genomics that we are helping evolve through a collaborative venture elsewhere in The University of Queensland. This will provide even greater platform technologies available for use by our staff and others in Herston and The University of Queensland. These facilities will also aid our students and early career researchers in obtaining grant funding or research results that will lead to the same – of course this world-class research infrastructure is a great recruiting tool to attract the best and brightest trainees.

There has also been a significant increase in research student numbers joining UQCCR, with PhD recruitment up 34% and at the time of going to press, and a doubling in our numbers of Honours students in 2011. Our research output and growth is indicated readily by the increased number of peer reviewed publications from 113 to 219. This is an astonishing advance and indicates that we have exceptional people and an environment that is encouraging productivity.

In 2010 UQCCR was central to a number of initiatives, announcements and debate on health research. UQCCR Deputy Director Professor David Paterson was one of three researchers to receive an inaugural Queensland Health Senior Clinical Research Fellowships. The recipients were chosen from a pool of national and international applicants, with their awards presented at the UQCCR by Her Excellency Ms Penelope Wensley AO, Governor of Queensland.

OUR RESEARCH OUTPUT AND GROWTH IS INDICATED READILY BY THE INCREASED NUMBER OF PEER REVIEWED PUBLICATIONS FROM 113 TO 219. THIS IS AN ASTONISHING ADVANCE AND INDICATES THAT WE HAVE EXCEPTIONAL PEOPLE AND AN ENVIRONMENT THAT IS ENCOURAGING PRODUCTIVITY.

We celebrated The University of Queensland's Centenary year by hosting the event 'Past Victories and Future Challenges in Clinical Academic Health Science'. Around 250 people joined university luminaries and top researchers to celebrate achievements and share visions for the future. The event showcased the historical achievements in medicine and health in Queensland and reviewed cutting edge advances at The University of Queensland in biomedical research. Also explored was the development and improvement of healthcare in Australia by Academic Health Science Centres – created by linking up universities and hospitals in pursuit of excellence in clinical care, research and training. Discussion was led by Professor Steve Smith, Imperial College UK, Professor Ranga Krishnan, Duke-NUS Singapore and Professor Ed Byrne, Vice Chancellor of Monash University, who shared their experiences of Academic Health Science Centres.

As part of our drive for community engagement and to raise our community profile we held our inaugural fundraising ball "Ovation...Celebrating Life" at the Tivoli to support ovarian cancer research at the Centre. We are grateful to the many sponsors who came forward at quite short notice, and welcome their continued support indicated for the 2011 event.

I believe that we can look forward confidently to an exciting and successful 2011.



# HIGHLIGHTS *of* 2010

FIRST FREDREICH'S ATAXIA AND ATAXIA  
TELECTANGESIA CLINICS

DEAN'S AWARD FOR OUTSTANDING RESEARCH  
HIGHER DEGREE THESES

FIRST COHORT OF HONOURS STUDENTS

UQCCR WELCOMED TWO NEW GROUP  
LEADERS IN 2010

HOT PAPERS

ACADEMIC CLINICAL HEALTH SCIENCE –  
PAST VICTORIES AND FUTURE CHALLENGES

OVATION...CELEBRATING LIFE

PRESTIGIOUS CLINICAL RESEARCH FELLOWSHIP

WESLEY RESEARCH INSTITUTE'S  
2009 RESEARCHER OF THE YEAR





01



02



03



04

01 & 02  
OVATION...  
CELEBRATING LIFE  
GALA BALL

## FIRST FREDREICH'S ATAXIA AND ATAXIA TELECTANGESIA CLINICS

UQCCR hosted the first multi-disciplinary clinic for patients suffering from Fredreich's Ataxia and Ataxia Telectangesia outside of Melbourne in 2010. This new clinic offers patients suffering from these extremely rare diseases a 'one-stop shop' where expertise from across the specialties can be offered at the same time. It is hoped that this new collaboration of clinicians, researchers and allied health professionals will lead to increased understanding of these conditions and research breakthroughs.

## DEAN'S AWARD FOR OUTSTANDING RESEARCH HIGHER DEGREE THESES

Two UQCCR researchers Dr Adrian Carter and Dr John O'Toole were selected as 2010 recipients of the award for theses examined in 2009:

Dr Adrian Carter's thesis was entitled Addiction Neuroethics: "The Promises and Perils of Neuroscience Research on Addiction".

Dr John O'Toole's thesis: "Discrete Quadratic Time-Frequency Distributions: Definition, Computation, and a Newborn Electroencephalogram Application".

## FIRST COHORT OF HONOURS STUDENTS

UQCCR saw its first cohort of Honours students complete their studies in 2010 with two thirds receiving First Class Honours degrees.

## UQCCR WELCOMED TWO NEW GROUP LEADERS IN 2010

Professor Gregory Rice joined UQCCR from the Baker IDI Heart and Diabetes Institute in Melbourne where he set up the Translational Proteomics Laboratory in 2005. Prior to this, Professor Rice co-founded the Perinatal Research Centre at The Royal Women's Hospital, Melbourne and the Mercy Perinatal Research Centre at the Mercy Hospital for Women. He has held continuous appointment within the National Health and Medical Research Council (NHMRC) Career Awards Program since 1989, and will continue vital research into ovarian cancer as the UQCCR Deputy Director, Translational Medicine.

Professor Wayne Hall joined UQCCR from The University of Queensland School of Population Health and works in the field of addiction, addressing socially important and intellectually challenging scientific and policy questions at the intersection between human biology and history. Professor Hall holds an Australian Research Council (ARC) Australia Fellowship and is one of the world's 'highly cited' researchers within his field.

## HOT PAPERS

UQCCR researchers had several prestigious publications during 2010; Professor Wayne Hall published in PLoS Medicine and The Lancet and Professor David Paterson published in PLoS One and The Lancet Infectious Diseases (see Appendix 2: Publications 2010).

## ACADEMIC CLINICAL HEALTH SCIENCE – PAST VICTORIES AND FUTURE CHALLENGES

UQCCR held this event as one of The University of Queensland's Centenary events in September 2010. Hosted by Faculty Executive Dean, Professor Nicholas Fisk, the meeting heard fascinating insights into the early days of medical research in Brisbane followed by discussion on the way forward for the Academic Health Science Centres concept in Australia.

## OVATION...CELEBRATING LIFE

The inaugural UQCCR fundraising gala ball "Ovation...Celebrating Life" was held on Friday 8 October 2010 at The Tivoli. The event was hosted by news presenter Rebecca Maddern (Ovacare Ambassador), and inspired by Narelle Crepin who spoke of the impact ovarian cancer has had on her life. Sponsors and guests enjoyed an unforgettable evening in support of a cause that affects many Australian women and their families.

## PRESTIGIOUS CLINICAL RESEARCH FELLOWSHIP

Queensland Health and The University of Queensland researcher, Professor David Paterson, received a \$2.5 million Senior Clinical Research Fellowship to stem the invasion of mega super bugs, which are resistant to all antibiotics and current treatments. Professor Paterson was one of three recipients chosen from a pool of national and international applicants, with their awards presented at UQCCR by Her Excellency Ms Penelope Wensley AO, Governor of Queensland.

## WESLEY RESEARCH INSTITUTE'S 2009 RESEARCHER OF THE YEAR

In February 2010, UQCCR researcher Professor McCombe was named as the Wesley Research Institute 'Researcher of the Year' in recognition of her outstanding neurological research advancing understanding and treatment of stroke, multiple sclerosis, motor neurone disease and other afflictions of the nervous system.

03 & 04  
OVATION...  
CELEBRATING LIFE  
GALA BALL



# EVOLUTION *of the* CENTRE

## THEMES & THEME LEADERS

BRAIN AND MENTAL HEALTH

CANCER

INFECTION AND IMMUNITY

MOTHERS, BABIES AND LIFELONG HEALTH



IN 2010, UQCCR WELCOMED A NEW DIRECTOR, PROFESSOR MURRAY MITCHELL, AND TWO NEW GROUP LEADERS, PROFESSOR GREGORY RICE AND PROFESSOR WAYNE HALL.

This addition of new research areas and interests provided the opportunity to review UQCCR research programmes and collaborations at the Annual Retreat. Some of the outcomes of the review were that the concept of 'cross-cutting' themes were not well understood outside of the Centre; that some of our original themes were better represented under larger 'umbrella' themes and that a re-focusing around four themes better represented actual collaboration within the Centre.

# THEMES

## BRAIN AND MENTAL HEALTH

Focuses on developing a better understanding of brain disorders, particularly stroke, movement disorders, demyelinating diseases, dementia and brain injury in adults and babies. Research in this theme also includes the new research areas of neuroimmunology, neuropharmacology, neuro-imaging, neuroprotection, neuroethics, molecular mechanisms of brain disease, addiction, dementia and brain injury.

**Research Groups:** Professor Paul Colditz, Professor Pamela McCombe, Associate Professor David Copland, Dr Judith Greer, Professor Wayne Hall, Professor David Pow, Associate Professor Stephen Rose

**Associate Investigators:** Associate Professor Gerard Byrne, Professor Helen Chenery, Professor David Reutens, Professor Peter Silburn

**Honorary Professor at UQCCR:**  
Professor Barbara Dodd

## CANCER

Includes research investigating breast, prostate, oral, ovarian and skin cancer and aims to develop a better understanding of the links between pathological changes at the molecular and cellular level and the clinical expression of the disease seen at the bedside. This research is paving the way for development of novel or improved diagnostic technologies, and better methods of treatment.

**Research Groups:** Associate Professor Camile Farah, Professor Robert 'Frank' Gardiner, Associate Professor Kiarash Khosrotehrani, Professor Sunil Lakhani, Professor Martin Lavin, Professor Gregory Rice

**Associate Investigator:** Dr Andrew Clouston

**Adjunct Professor at UQCCR:**  
Professor Suzanne Chambers

## INFECTION AND IMMUNITY

Links basic research on bacterial genetics with new approaches to investigating risks for infections with antibiotic resistant organisms. Research focuses on a range of bacterial infections such as those due to Methicillin Resistant Staphylococcus Aureus (MRSA) and multiply resistant Gram negative organisms, as well as collaborations on the development of new antibiotics to treat these threats.

**Research Groups:** Professor David Paterson

**Associate Investigator:**  
Associate Professor Graeme Nimmo

## MOTHERS, BABIES AND LIFELONG HEALTH

Promotes that a healthy start to life is vital for lifelong health and preventing susceptibility to chronic diseases – including diabetes, heart disease and stroke. Research focuses on the links between pregnancy, the fetal and newborn period, to lifelong health, with the goal to improving health outcomes for disorders of pregnancy, fetal growth restriction, and brain injury.

**Research Groups:** Professor Paul Colditz, Professor Nicholas Fisk, Associate Professor Kiarash Khosrotehrani, Professor Murray Mitchell, Professor Gregory Rice

**Associate Investigators:** Professor Sandra Capra, Professor Paul Hodges, Associate Professor Philip Walker, Dr Andreas Zankl

**Honorary Professor at UQCCR:**  
Emeritus Professor Eugenie Lumbers

*Far Left*  
UQCCR BUILDING  
FAÇADE



# THEME LEADERS

01, 02 & 03  
RESEARCH  
CONDUCTED  
AT UQCCR

## BRAIN AND MENTAL HEALTH



### Professor David Pow

Professor David Pow is UQCCR Deputy Director (Basic Science) and an NHMRC Senior Research Fellow who specialises in the area of neurotransmitter homeostasis in the normal and pathological brain.



### Professor Pamela McCombe

Professor Pamela McCombe is a neurologist working at the Wesley Hospital and RBWH in Brisbane with research interests in the field of neuroimmunology, both in how the immune system causes disease of the nervous system, and more recently, in how the immune system might contribute to recovery from damage.

## CANCER



### Professor Gregory Rice

Professor Gregory Rice is an NHMRC Principal Research Fellow and UQCCR Deputy Director (Translational Medicine). He also holds appointments as Professor in the Department of Medicine, Monash University; Chief Scientist of the Mercy Perinatal Research Centre, Mercy Hospital for Women and Chairman of HealthLinx Limited.



### Professor Sunil Lakhani

With joint academic (The University of Queensland) and clinical appointments (Pathology Queensland), Professor Sunil Lakhani is an integral part of breast cancer patient management in the Breast Unit of the Royal Brisbane & Women's Hospital (RBWH) and Director of Anatomical Pathology for Pathology Queensland Central Laboratory.



### Professor Robert 'Frank' Gardiner

UQCCR Theme Leader Professor Robert 'Frank' Gardiner is a senior Urologist holding an appointment at the RBWH. Professor Gardiner's research focuses on the early detection and prognosis of prostate cancer and improving psycho-social outcomes for patients.

## INFECTION AND IMMUNITY



### Professor David Paterson

Professor David Paterson is UQCCR Deputy Director Clinical Science, and a Brisbane trained Infectious Disease Physician at RBWH, Consultant Microbiologist with Pathology Queensland and Medical Advisor for the Centre for Healthcare Related Infection Surveillance and Prevention (CHRISP). Professor Paterson's clinical work, research and teaching has been honoured and recognised internationally. His research interest includes study of the molecular and clinical epidemiology of infections with antibiotic resistant organisms. The focus of this work is the translation of knowledge into optimal prevention and treatment of these infections.

## MOTHERS, BABIES AND LIFELONG HEALTH



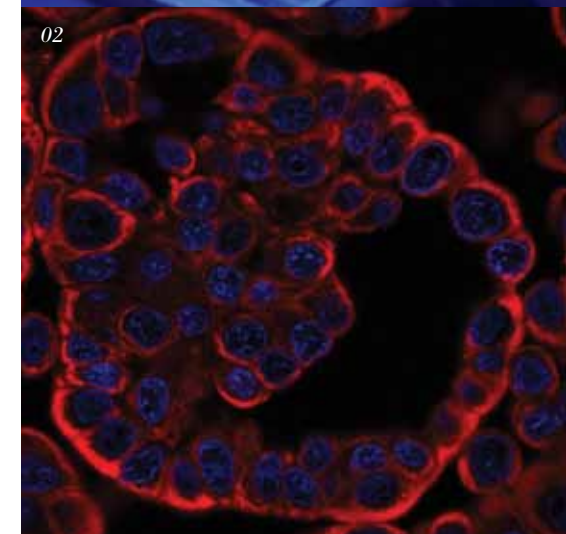
### Professor Paul Colditz

UQCCR Theme Leader Professor Paul Colditz is the Foundation Professor of Perinatal Medicine at The University of Queensland and Director of the Perinatal Research Centre (PRC). Professor Paul Colditz's multidisciplinary research group focuses on clinically important perinatal health problems.



### Professor Murray Mitchell

Professor Murray Mitchell is the UQCCR Centre Director, and has received worldwide recognition for his research on the causes and consequences of pre-term birth and the long-term health effects of developmental exposure to environmental chemicals.





UQCCR'S MISSION IS TO  
IMPROVE HEALTH THROUGH  
EXCELLENCE IN RESEARCH,  
CLINICAL PARTNERSHIPS,  
MENTORSHIP AND SERVICE.





# FELLOWSHIPS *and* AWARDS

## **BRAIN AND MENTAL HEALTH**

RESEARCHER PROFILE: ASSOCIATE PROFESSOR JAYNE LUCKE  
*AUSTRALIAN RESEARCH COUNCIL (ARC) LINKAGE GRANT*

## **CANCER**

RESEARCHER PROFILE: DR PETER SIMPSON  
*NATIONAL BREAST CANCER FOUNDATION (NBCF)  
EARLY CAREER FELLOWSHIP*

## **INFECTION AND IMMUNITY**

RESEARCHER PROFILE: PROFESSOR DAVID PATERSON  
*QUEENSLAND HEALTH SENIOR CLINICAL RESEARCH FELLOWSHIP*

## **MOTHERS, BABIES AND LIFELONG HEALTH**

RESEARCHER PROFILE: DR MOSTEFA MESBAH  
*QATAR NATIONAL PRIORITIES RESEARCH PROGRAM GRANT*





## BRAIN *and* MENTAL HEALTH

### RESEARCHER PROFILE: ASSOCIATE PROFESSOR JAYNE LUCKE

Jayne has a background in social and health psychology and her career has included lecturing in psychology and research methods at the University of Huddersfield, evaluating a suicide prevention program for young people at The University of Queensland's Psychiatry Department and researching the ethical and policy implications of scientific developments to prolong human life in the Office of Public Policy and Ethics at the Institute of Molecular Bioscience. Before joining the Addiction Neuroethics unit at UQCCR in 2010, Jayne was Deputy Director of the Australian Longitudinal Study on Women's Health in the School of Population Health and has been a Director of Family Planning Queensland, the state's leading provider of sexual and reproductive health clinical, education and training services since 2008.

In 2010, Jayne was awarded an **ARC Linkage Project Grant (2010-2013)** in collaboration with colleagues at The University of Queensland and the University of Newcastle, to examine 18-23 year old women's contraceptive choices and pregnancy intentions.

This longitudinal project involves an internet survey of 2000 randomly selected young women from urban and rural areas of NSW, with the aim of providing empirical evidence to support policy and practices to assist women to manage contraception as they wish and to plan more effective and appropriate services.

**THIS STUDY WILL INFORM THE DESIGN OF CONTRACEPTIVE EDUCATION AND SERVICE DELIVERY, PARTICULARLY TO YOUNG WOMEN IN RURAL AREAS, IN COLLABORATION WITH INDUSTRY PARTNERS, FAMILY PLANNING NSW AND BAYER AUSTRALIA LTD.**

A key area of Jayne's research is reproductive health. As an investigator of the Australian Longitudinal Study on Women's Health Jayne is particularly interested in aspects of sexual and reproductive health, particularly changes in contraceptive use over time, sexual health, patterns of fertility and changing aspirations for children.



As part of this research program Jayne co-edited a report to the Department of Health and Ageing about the reproductive health of women from the Australian Longitudinal Study on Women's Health and coordinated the Study's submission to the new National Women's Health Policy.

Another field of research is Neuroenhancement. Recent developments in neuroscience have raised the possibility that pharmaceuticals may be used to modify brain processes in ways that enhance memory, mood and attention in people who are not impaired by illness or disorder.

Jayne and colleagues in the Addiction Neuroethics unit have recently published a paper in *EMBO Reports* drawing on the history of recreational drug use and pharmacological enhancement to examine whether neuroenhancement should be regarded as a form of cheating, whether it is a medical treatment or a legitimate lifestyle enhancement and what should be done about it. It compares two examples of different ways of dealing with lifestyle drugs: the case of sports doping where substances are banned, and the case of Viagra where the drug is regulated and distributed through the health system.<sup>1</sup>

**ARC LINKAGE PROJECT GRANTS SUPPORT RESEARCH AND DEVELOPMENT PROJECTS WHICH ARE COLLABORATIVE BETWEEN HIGHER EDUCATION RESEARCHERS AND A PARTNER ORGANISATION FROM OUTSIDE THE HIGHER EDUCATION SECTOR. ARC LINKAGE PROJECTS ARE UNDERTAKEN TO ACQUIRE NEW KNOWLEDGE, AND INVOLVE RISK OR INNOVATION.**

**THESE PROJECTS ALSO PROVIDE THE OPPORTUNITY FOR POSTGRADUATE AND POSTDOCTORAL RESEARCHERS TO ENGAGE IN INDUSTRY-ORIENTED RESEARCH TRAINING.**

**Key fact:** The decline in teenage pregnancy in the US of 27% between 1990 and 2000 has been attributed to increased contraceptive use rather than abstinence promotion.<sup>2</sup>

**A longitudinal study is a research study that involves repeated observations of the same items over long periods of time—often many decades. Longitudinal studies are often used in psychology to study developmental trends across the life span, and in sociology to study life events throughout lifetimes or generations. The reason for this is that unlike cross-sectional studies, longitudinal studies track the same people, and therefore the differences observed in those people are less likely to be the result of cultural differences across generations. Because of this benefit, longitudinal studies make observing changes more accurate and they are able to be applied in various other fields.**

<sup>1</sup> Lucke JC, Bell S, Partridge B, Hall W. (2011). Academic doping or Viagra for the brain? The history of recreational drug use and pharmacological enhancement can provide insight into these uses of neuropharmaceuticals. *EMBO Reports*, 12: 197-201.

<sup>2</sup> Ventura SJ, Abma JC, Mosher WD, Henshaw S. Estimated pregnancy rates for the United States, 1990-2000: an update. *Natl Vital Stat Rep.* June 15, 2004;52(23).



# CANCER

## RESEARCHER PROFILE: DR PETER SIMPSON

*Below Right*  
TISSUE SECTION  
SHOWING LOBULAR  
BREAST CANCER

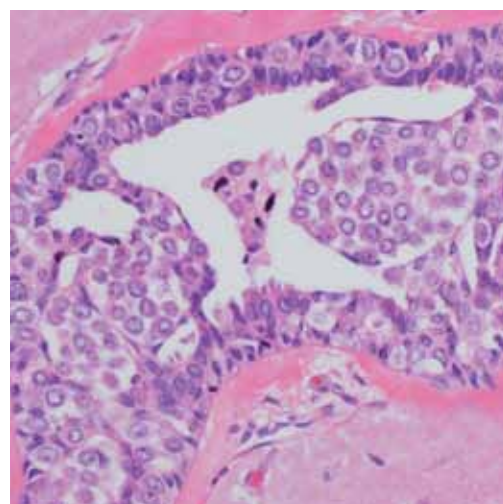
Peter has been a postdoctoral research fellow for just under 10 years, joining Professor Sunil Lakhani at the Breakthrough Breast Cancer Research Centre in the UK following the award of his PhD from the University of Liverpool in 2001. In 2004-2005, Peter helped Professor Lakhani relocate to The University of Queensland and establish the Molecular and Cellular Pathology Laboratory, initially based within the Queensland Institute of Medical Research but relocated to the UQCCR in 2008.

In 2010, Peter was awarded a prestigious **National Breast Cancer Foundation (NBCF) Early Career Fellowship** to continue his work on Invasive Lobular Carcinoma (ILC). ILCs are associated with pathological and biological features indicating a good prognosis but despite this, a proportion of patients diagnosed with ILC die from their disease due to aggressive tumour behaviour that currently cannot be identified nor predicted. Analysis of different aspects of ILC (e.g. invasion, metastasis, treatment resistance and outcome) will aim to stratify the disease into more biologically and clinically meaningful subgroups and thus identify mechanisms and pathways for intervention, better mechanisms to predict behaviour and for patient treatment.

Peter's Fellowship will allow for the molecular analysis of large cohorts of ILC with long-term follow up, which offers a unique opportunity to identify and characterise the most important molecular determinants of behaviour and outcome. Such molecular markers will make a significant addition to current clinical and pathological parameters for predicting the behaviour of ILC. Clinicians will then be in a better position to manage individual patients based on the severity of their disease and likely response to treatment. Characterisation of the genes and pathways that drive tumour behaviour will set the scene for the development of new therapies for ILC patients.

**Key fact:** Breast cancer is a very heterogeneous disease making classification and management of patients a significant challenge. For example, it remains difficult to predict which patients are at risk of their disease returning (recurrence), spreading (metastasis) or which patients will respond to a specific treatment. There has therefore been a concerted effort to supplement the morphological classification of breast disease with molecular parameters that can provide a clearer appreciation for this complexity and better predict tumour behaviour.

**THE MAJORITY OF BREAST CARCINOMAS (65-80%) ARE CLASSIFIED AS INVASIVE DUCTAL CARCINOMA (IDC) AND HENCE MOST RESEARCH FOCUSES ON THIS TUMOUR TYPE. INVASIVE LOBULAR CARCINOMA (ILC) IS THE MOST COMMONLY DIAGNOSED 'SPECIAL TYPE' OF BREAST CANCER, COMPRISING UP TO 15% OF ALL CASES.**



THE NBCF EARLY CAREER FELLOWSHIP SUPPORTS THE SALARY AND RESEARCH OF OUTSTANDING NEW INVESTIGATORS WITH A VISION TO EXPAND THE SCALE AND SCOPE OF BREAST CANCER RESEARCH IN AUSTRALIA. THE SCHEME AIMS TO DEVELOP THE MOST CREATIVE RESEARCHERS ACROSS THE RANGE OF DISCIPLINES IN BIOMEDICAL, CLINICAL, HEALTH SERVICES AND PUBLIC HEALTH RESEARCH AND FOSTER MENTORING AND COLLABORATION OF TALENTED EARLY CAREER RESEARCHERS, AND FACILITATE INTEGRATION OF THESE NEW INVESTIGATORS INTO SUCCESSFUL RESEARCH TEAMS.





## INFECTION and IMMUNITY

RESEARCHER PROFILE:  
PROFESSOR DAVID PATERSON

*Far Left*  
RESEARCH  
EXPERIMENT

DAVID AND HIS TEAM WILL WORK TO FIND A CHINK IN THE SUPER BUG'S SEEMLY IMPENETRABLE ARMOUR—WHY IT IS SO RESISTANT, HOW IT IS BEING SPREAD—AND DEVELOP A NEW ANTIBIOTIC TO COMBAT IT WITH COLLEAGUES FROM THE UNIVERSITY OF QUEENSLAND'S INSTITUTE FOR MOLECULAR BIOSCIENCE.

David Paterson is a Professor of Medicine at UQCCR; an Infectious Diseases Physician at RBWH, Consultant Microbiologist with Pathology Queensland and Medical Advisor for the Centre for Healthcare Related Infection Surveillance and Prevention (CHRISP).

Professor Paterson trained as a clinician in Brisbane, and then spent ten years at the University of Pittsburgh School of Medicine, one of the leading academic medical institutions in the U.S. In 2000 he was one of two recipients of the prestigious American Society for Microbiology's (ASM) Merck Irving Sigal Memorial Award for "Significant Research in Microbiology and Infectious Diseases". After returning to Brisbane and joining Queensland Health and UQCCR, he received the Frank Fenner Award for Advanced Research in Infectious Diseases by the Australasian Society for Infectious Diseases in 2008.

David's research interests include the study of the molecular and clinical epidemiology of infections with antibiotic resistant organisms. The focus of this work is the translation of knowledge into optimal prevention and treatment of these infections. In 2010 David was awarded one of the first **Queensland Health Senior Clinical Research Fellowships**. His fellowship is part of a \$20.55 million Health and Medical Research Program administered by the Office of Health and Medical Research to attract and retain leading clinical researchers to Queensland's publicly funded health facilities.

The fellowship will work on stemming the invasion of bacteria, which are resistant to all, or almost all, antibiotics and current treatments. These new strains of bacteria had 'extreme drug resistance' or XDR and are far worse than MRSA (the Methicillin Resistant Staphylococcus Aureus) and even the more aggressive Community Acquired MRSA strain.

These highly resistant bacteria are already a health issue in parts of Asia, with outbreaks in some major hospitals in the region so there is the potential to see these strains in Australian travellers returning home after hospitalisation in these areas. Currently there are no treatment options at all. David and his team will work to find a chink in the super bug's seemingly impenetrable armour—why it is so resistant, how it is being spread—and develop a new antibiotic to combat it with colleagues from The University of Queensland's Institute for Molecular Bioscience.

**Antimicrobial resistance is an evitable consequence of the clinical use of antimicrobials. Today,  $\beta$ -lactam antibiotics remain the most widely utilised antibiotics owing to their comparatively high effectiveness, low cost, ease of delivery and minimal side effects. Unfortunately, microorganisms have a remarkable array of mechanisms which enable them to develop resistance to antimicrobial agents. Not long after the discovery of penicillin, the first  $\beta$ -lactam antibiotic, resistance to this antibiotic was reported. Since then, the emergence and spread of bacterial resistance to antimicrobial agents has increased as a result of the use, overuse and misuse of these drugs, especially those that have a broad-spectrum of activity.**





# MOTHERS, BABIES and LIFELONG HEALTH

RESEARCHER PROFILE:  
DR MOSTEFA MESBAH

01  
NEWBORN EEG  
SHOWING SEIZURE

02  
A TIME-FREQUENCY  
REPRESENTATION  
OF NEWBORN EEG  
SEIZURE

Mostefa Mesbah conducts research in the area of biomedical signal processing, playing a key role alongside clinical researchers in the Perinatal Research Centre, which focusses on translational research at UQCCR. In addition, Mostefa is a regular reviewer for Journals such as IEEE Transactions on Biomedical Engineering and IEEE Transactions on Signal Processing.

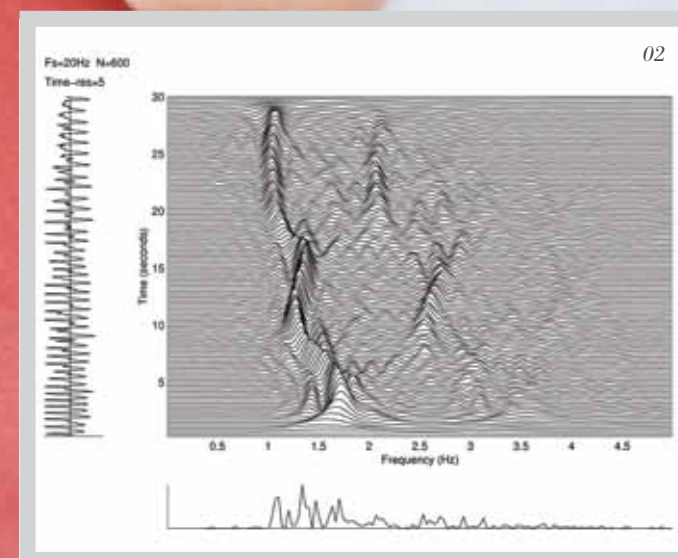
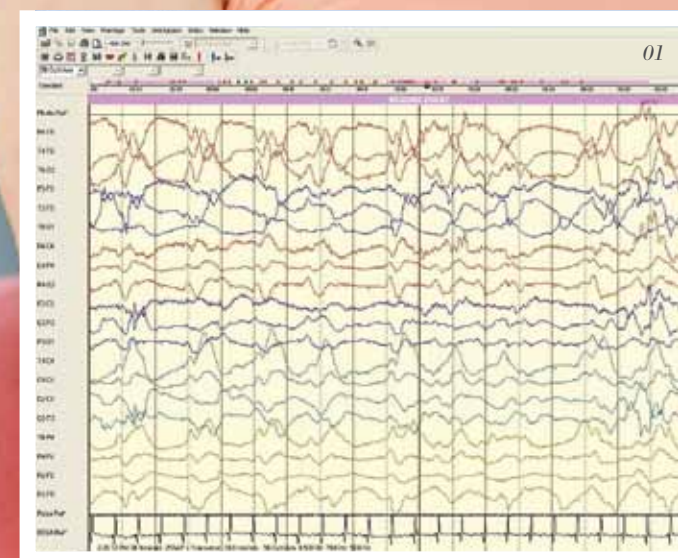
In 2010 Mostefa was part of the team from Qatar University and The University of Queensland awarded a \$1 million **Qatar National Priorities Research Program Grant** to design a computer-automated system for fetal movement classification for use in the case of high-risk pregnancies. He is also the chief investigator for a related ARC Discovery project. Significant health resources are spent on monitoring high risk fetuses in late gestation with common maternal conditions such as preeclampsia or gestational diabetes associated with a high prevalence of fetal growth compromise and increased rates of fetal morbidity and death. Currently, monitoring methods, namely cardiotocography and ultrasound imaging, provide some reassurance that the fetus is not severely compromised but are not very useful in predicting outcomes.

Automatic fetal movement detection is a challenging signal processing problem that has received little attention. The challenge comes from the fact that the signals associated with the fetal movement are highly non-stationary and extremely noisy especially with long-term recordings. This project proposes to develop and use non-stationary signal processing tools to build a system for detecting and classifying different fetal movements.

The system has a wireless accelerometer-based ambulatory data acquisition unit to measure fetal movements, a pre-processing unit for signal enhancement, and a classification unit to discriminate between different types of fetal movements and analyse their complexity. This system would assist clinicians to detect abnormal behaviours and allow early intervention to enhance the chances of good outcomes.

Previous research has shown that fetal movement was found important in identifying fetuses in difficulty where a decrease in fetal movement precedes fetal death and a change in movement quality relates to poor outcome.

**The Qatar National Priorities Research Program (NPRP) is intended to foster a research culture in Qatar through collaboration with world leading research institutions. Specifically, the grants offered will build human capital in Qatar, fund research to benefit the nation, the region, and the world and raise Qatar's profile within the international research community. By funding research that will raise Qatar's profile within the international academic community, the NPRP will help to diminish the geographical isolation felt by some researchers in Qatar; fostering a level of integration with the global research community, to the benefit of the researchers in Qatar and Qatar as a whole.**



SIGNIFICANT HEALTH RESOURCES ARE SPENT ON MONITORING HIGH RISK FETUSES IN LATE GESTATION WITH COMMON MATERNAL CONDITIONS SUCH AS PREECLAMPSIA OR GESTATIONAL DIABETES ASSOCIATED WITH A HIGH PREVALENCE OF FETAL GROWTH COMPROMISE AND INCREASED RATES OF FETAL MORBIDITY AND DEATH.



# RESEARCH HIGHER DEGREE STUDENT PROFILES

## **BRAIN AND MENTAL HEALTH**

STUDENT PROFILE: SHIREE HEATH

## **CANCER**

STUDENT PROFILE: PHAN NGYUEN

## **INFECTION AND IMMUNITY**

STUDENT PROFILE: BEN ROGERS

## **MOTHERS, BABIES AND LIFELONG HEALTH**

STUDENT PROFILE: HANNA REINEBRANT



# BRAIN *and* MENTAL HEALTH

STUDENT PROFILE:  
SHIREE HEATH

*Below*  
**PATIENT PREPARED  
FOR AN FMRI  
BRAIN SCAN**

Shiree graduated from The University of Queensland's School of Health and Rehabilitation Sciences in 2007 with a First Class Honours Degree in Speech Pathology. After successfully completing her degree, Shiree was awarded the 2007 Speech Pathology Australia Student Award for outstanding academic achievement and clinical excellence. In 2008, she was awarded an Australian Postgraduate Award scholarship to commence a PhD investigating the neurocognitive substrates of naming facilitation in individuals with aphasia following stroke.

Shiree's current PhD research is exploring the neurocognitive substrates of naming facilitation in individuals with aphasia, or "how language therapy works in the brain following stroke".

While there is evidence to support the effectiveness of certain treatments, not all individuals benefit and the underlying neural and cognitive mechanisms responsible for positive outcomes remain far from clear. As such, clinicians are currently unable to accurately predict what type of treatment will be most effective for which individuals. The project, therefore, aims to compare the effectiveness of different naming treatments and considers how these treatments have their effect at a cognitive and neural level using neuroimaging technology.

**LOSS OF THE ABILITY TO COMMUNICATE FOLLOWING BRAIN INJURY CAN HAVE A DEVASTATING IMPACT ON AN INDIVIDUAL, AS WELL AS THEIR FAMILY AND FRIENDS.**



Imagine being unable to understand those around you, or unable to express your thoughts and feelings. Shiree's research has utilised state-of-the-art neuroimaging techniques to explore how the brain processes language, what happens to those processes following injury, and how language recovery can be facilitated. It is hoped that this research will advance our understanding of the brain mechanisms underlying language disorders and enable more targeted and effective treatment delivery, ultimately enhancing rehabilitative outcomes for people with aphasia.

Shiree is part of the Language Neuroscience Laboratory and her PhD supervisory team includes Associate Professor David Copland (principal supervisor), Dr Anthony Angwin, Dr Katie McMahon and Professor Lyndsey Nickels (Macquarie University). Other research being conducted within the Laboratory includes pharmacotherapy for neurogenic cognitive and communication disorders, as well as deep brain stimulation treatment in Parkinson's disease.

**Aphasia, from the Greek root word "aphatos", meaning speechless, is a devastating communication disorder resulting from brain injury. It is an 'invisible' disorder which can affect an individual's ability to understand, speak, read, write and communicate with the world around them. It is important to remember that aphasia is a communication disorder, not an intellectual deficit.**

**UP TO 80,000 AUSTRALIANS MAY CURRENTLY HAVE APHASIA, BUT PUBLIC AWARENESS OF THE CONDITION IS LOWER THAN THAT FOR OTHER NEUROLOGICAL CONDITIONS WITH SIMILAR PREVALENCE SUCH AS MULTIPLE SCLEROSIS OR PARKINSON'S DISEASE.<sup>1</sup>**

<sup>1</sup> Engelter, S., Gostynski, M., Papa, S., Frei, M., Born, C., Ajdacic-Gross, V., et al. (2006). Epidemiology of aphasia attributable to first ischemic stroke: incidence, severity, fluency, etiology, and thrombolysis. *Stroke*, 37, 1379-1384.  
Pedersen, P. M., Jorgensen, H. S., Nakayama, H., Raaschou, H. O., & Olsen, T. S. (1995). Aphasia in acute stroke: incidence, determinants, and recovery. *Annals of Neurology*, 38(4), 659-666.



IN THE PROCESS OF ESTABLISHING THESE CRITERIA, PHAN'S PHD INCLUDES TWO CLINICAL TRIALS COMBINING AF AND NBI IN HEAD AND NECK CANCER PATIENTS WHO ARE A HIGH RISK POPULATION FOR LUNG CANCER. BY COMBINING THESE TWO BRONCHOSCOPY METHODS HE AIMS TO IMPROVE THE EARLY DETECTION AND DIAGNOSIS OF LUNG AND HEAD AND NECK CANCERS.



## CANCER

### STUDENT PROFILE: PHAN NGYUEN

*Below Right*  
**AUTOFLUORESCENCE  
AND NARROW  
BAND IMAGING OF  
A PRECANCEROUS  
LUNG LESION**

Phan is a qualified Thoracic Medicine Physician, who graduated from the University of Adelaide in 2001. He trained at The Royal Adelaide Hospital and at The Royal Brisbane & Women's Hospital and completed his FRACP in 2008. He then joined UQCCR to commence his PhD studies investigating optical diagnosis in bronchoscopy. Phan is supported by a Cancer Council of Queensland PhD Scholarship (John Earnshaw Award), and the Roslyn Hogan / Early Detection of Lung Cancer Award (The Australian Lung Foundation). He is supervised by Dr David Fielding and Associate Professor Brent Masters and is a member of the Oral Cancer Research Program led by Associate Professor Camile Farah.

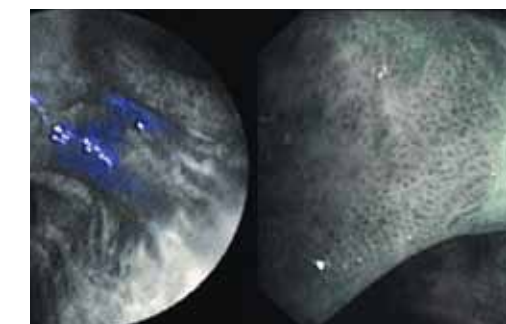
**PHAN'S PHD PROJECT AIMS TO IMPROVE DIAGNOSIS IN LUNG AND HEAD AND NECK CANCERS BY DEFINING A ROLE FOR OPTICAL DIAGNOSIS (VISUAL ASSESSMENT) IN BRONCHOSCOPY. PHAN AIMS TO OBJECTIVELY ANALYSE THE IMAGES OBTAINED FROM ENDOBRONCHIAL ULTRASOUND (EBUS), AUTOFLUORESCENCE (AF) AND NARROW BAND IMAGING (NBI) WITH THE USE OF ESTABLISHED IMAGE ANALYSIS SOFTWARE TO DEVELOP INDEPENDENT CRITERIA FOR OPTICAL DIAGNOSIS.**

In the process of establishing these criteria, his PhD includes two clinical trials combining AF and NBI in head and neck cancer patients who are a high risk population for lung cancer. By combining these two bronchoscopy methods he aims to improve the early detection and diagnosis of lung and head and neck cancers.

The overall goal is to establish optical biopsy as a legitimate adjunct to laboratory investigations to improve the overall accuracy of bronchoscopy.

**HIS PROJECT TITLED "OPTICAL DIFFERENTIATION OF BENIGN AND MALIGNANT LYMPHADENOPATHY BY GREY SCALE TEXTURE ANALYSIS" WON BEST YOUNG INVESTIGATOR ORAL PRESENTATION AT THE AUSTRALIAN LUNG CANCER CONFERENCE IN MELBOURNE 2010.**

A further project, "Narrow band imaging improves preoperative fluorescence assessment of upper and lower airways in head and neck cancer patients" won best interventional pulmonology poster at The Thoracic Society of Australia New Zealand annual scientific meeting in Brisbane 2010, and best oral presentation by a PhD research student at The Thoracic Society Queensland annual scientific meeting in 2010. This project has been accepted for oral presentation at The Asia-Oceania Otolaryngology Congress to be held in Auckland in early March 2011. Phan hopes to have the results of his research projects published in the near future.







## INFECTION *and* IMMUNITY

### STUDENT PROFILE: BEN ROGERS

*Below*  
E. COLI SAMPLE

*Far Right*  
BACTERIA

Ben is an infectious disease physician who has been funded by an Australian Postgraduate Award to complete a PhD in clinical, epidemiologic and molecular characteristics of multiresistant E.coli infection in the Australian community.

E.coli is the most common cause of urinary tract infection and resulting bacteraemia in the community. The passing decade has led to the dissemination of extended spectrum  $\beta$ -lactamase resistance throughout E.coli populations. This genetically encoded antibiotic resistance has led to the emergence of severe and difficult to treat infection in otherwise healthy community dwelling individuals. Treatment options are very limited and organisms are frequently resistant to currently recommended empirical therapy.

Ben's project aims to provide benefit to individual patients by identifying factors in the clinical presentation and management of multi-resistant E.coli infections to decrease rates of treatment failure, morbidity, mortality and secondary spread.

**RATES OF INFECTION ARE CLEARLY RISING IN THE COMMUNITY AND CLINICIANS SUSPECT THAT PARTICULAR GROUPS ARE AT RISK (FOR EXAMPLE; RECENT TRAVELLERS) BUT THERE IS LITTLE PUBLISHED DATA ON THE ORIGIN AND RISK OR ACCURATE ESTIMATES OF CURRENT RATES, HEALTH AND FINANCIAL BURDEN IN AUSTRALIA.**

Data on optimal management is also lacking so many patients are required to remain in hospital on intravenous antimicrobial programs because of a lack of alternative therapies. Furthermore, the in-hospital management is complicated by a lack of data on infection control measures relevant to this particular organism so a further aim of Ben's project is to determine the required infection control during in-hospital management of patients with such infections.





## MOTHERS, BABIES *and* LIFELONG HEALTH

STUDENT PROFILE:  
HANNA REINEBRANT

After completing a Master of Medicine, Pharmaceutical Bioscience at Göteborg University in 2007, Hanna continued her work as a Research Assistant at the Sahlgrenska Academy. In 2008 Hanna relocated from Sweden to The University of Queensland to begin her PhD studies with Dr Kathryn Buller, winning a prestigious International Research Tuition Award to support her studies in Australia.

**HANNA'S RESEARCH PROJECT STUDIES THE EFFECTS OF PRETERM HYPOXIA-ISCHEMIA ON THE SEROTONERGIC SYSTEM IN THE BRAINSTEM USING AN IMMATURE RAT PUP MODEL.**

The aim of the project is to characterise the brainstem damage<sup>1</sup> and to investigate the underlying mechanisms after hypoxia-ischemia. Two key mechanisms being examined are (i) the role that neuroinflammation plays in producing serotonergic cell body loss in the brainstem<sup>2</sup>, and (ii) whether brainstem neuronal survival is compromised because of disrupted neural connections with the damaged forebrain.

**HANNA'S PROJECT HAS TO DATE RESULTED IN TWO PUBLICATIONS IN INTERNATIONAL PEER-REVIEWED JOURNALS AND CONTRIBUTED SIGNIFICANTLY TO ADDITIONAL PUBLICATIONS.**

Hanna has also presented her work at a number of national and international conferences, including the Society for Neuroscience (Chicago, USA) and the Australian Neuroscience Society (Auckland, NZ).

**In 2010, Hanna was one of the student poster finalists at the ASMR Postgraduate Student conference, and the winner of the Basic Science Oral at the RBWH Health Care. Hanna has been awarded with travel grants from the Australian Neuroscience Society and UQCCR to attend conferences. Hanna was also one of the key UQCCR representatives at the Open Day for prospective students and the inaugural fundraising gala ball "Ovation... Celebrating Life".**

<sup>1</sup> Reinebrant H. E., Wixey J. A., Gobe G. C., Colditz P. B., Buller K.M. (2010). Differential effects of neonatal hypoxic-ischemic brain injury on brainstem serotonergic raph nuclei. *BRAIN RESEARCH* 1322, 124-133.

<sup>2</sup> Wixey, J.A., Reinebrant, H. E., Buller, K.M. (2011). Inhibition of Neuroinflammation Prevents Injury to the Serotonergic Network After Hypoxia-Ischemia in the Immature Rat Brain. *J Neuropathol Exp Neurol* Vol. 70, No. 1, 23-35.



# CLINICAL COLLABORATION

FIRST MRI COMPATIBLE INCUBATOR

FRIEDREICH ATAXIA CLINIC GIVES  
NEW HOPE TO SUFFERERS



01  
PROFESSOR PAUL  
COLDITZ

02  
UQCCR BUILDING  
ENTRANCE



### FIRST MRI COMPATIBLE INCUBATOR

A new \$1 million MRI compatible incubator designed for babies was purchased in 2010 and will allow The University of Queensland researchers to develop earlier and more effective treatments for newborns with brain impairment. Until now, imaging premature babies' brains has not been standard practice due to the shortcomings of adult equipment and the risks to these extremely vulnerable patients – despite a significant incidence of impairment. The MRI Neonatal Incubator will be located at the Royal Brisbane & Women's Hospital and the Royal Children's Hospital. The incubator slides into a standard MRI unit and enables babies to lie undisturbed in a safe and warm environment while a non-invasive image of the brain is recorded.

**THE NEW EQUIPMENT WOULD BE USED BY DOCTORS FOR EARLY DIAGNOSIS OF IMPAIRMENT AND ENABLE RESEARCH INTO PREVENTION, AS WELL AS EARLIER AND IMPROVED REHABILITATION TREATMENTS.**

Professor Colditz, who heads the Perinatal Research Centre at UQCCR and who has an established track record in the field of MRI and perinatal research, attracted a consortium of collaborators including the Royal Brisbane & Women's Hospital, the Royal Children's Hospital and the Royal Children's Hospital Foundation to join with The University of Queensland to purchase the unit.

Professor Colditz's group will be the first in Australia able to conduct imaging of preterm babies. This opportunity has the potential to break down the current boundaries of brain impairment treatment and produce huge gains for babies and their families.



### FRIEDREICH ATAXIA CLINIC GIVES NEW HOPE TO SUFFERERS

2010 saw the opening of the first multidisciplinary Friedreich Ataxia (FA) clinic in Queensland by Deputy Premier and Minister for Health Paul Lucas. Friedreich's Ataxia is a rare neurological, degenerative disorder that is crippling and life threatening for sufferers. In most cases sufferers are diagnosed around puberty and are confined to a wheel chair within a few years.

The FA clinic brings together a range of specialists who see patients during an annual clinic visit. The specialists rapidly develop expertise in the rare condition through seeing a number of patients with the same condition. Without such clinics specialists are unlikely to see more than one or two cases in their careers, making it difficult to develop expertise in diagnosis and treatment. Inevitable consequences of such clinics is that research can be undertaken based on the data collected and developing expertise, ultimately leading to better treatments. Apart from providing world's best practice the Brisbane FA clinic is also part of a global alliance and clinical trial network. There are a handful of international drugs about to enter phase three patient trial and people who attend this clinic will be eligible to take part in those clinical trials.

**THE FA CLINIC IS A COLLABORATION BETWEEN CLINICIANS AND RESEARCHERS FROM THE ROYAL BRISBANE & WOMEN'S HOSPITAL AND THE ROYAL CHILDREN'S HOSPITAL, UQCCR AND THE QUEENSLAND INSTITUTE OF MEDICAL RESEARCH.**





PROFESSOR COLDITZ'S GROUP WILL BE THE FIRST IN AUSTRALIA ABLE TO CONDUCT IMAGING OF PRETERM BABIES. THIS OPPORTUNITY HAS THE POTENTIAL TO BREAK DOWN THE CURRENT BOUNDARIES OF BRAIN IMPAIRMENT TREATMENT AND PRODUCE HUGE GAINS FOR BABIES AND THEIR FAMILIES.





# OUTREACH *and* COMMUNITY

VISIT FROM THE PRIME MINISTER

ACADEMIC CLINICAL HEALTH SCIENCE –  
PAST VICTORIES AND FUTURE CHALLENGES

TOURETTE SYNDROME ASSOCIATION OF AUSTRALIA FORUM

SCIENCE SESSIONS AT MCDOWALL STATE SCHOOL

INAUGURAL MEETING OF NEUROIMMUNOLOGY AUSTRALIA

ROTARY NATIONAL YOUTH SCIENCE FORUM

PARKINSON'S DISEASE SEMINAR

INTRODUCING ADDICTION NEUROETHICS





01  
(FORMER) PRIME  
MINISTER KEVIN RUDD  
AND PROFESSOR  
NICHOLAS FISK

02  
PROFESSOR  
PETER SILBURN  
WITH PATIENT

## VISIT FROM THE PRIME MINISTER

On the 12 April 2010 UQCCR hosted the then Prime Minister, Kevin Rudd as he launched the Federal Government's plan to take responsibility for primary health care.

## ACADEMIC CLINICAL HEALTH SCIENCE – PAST VICTORIES AND FUTURE CHALLENGES

UQCCR hosted one of The University of Queensland's Centenary events in September 2010. Former Chancellor, Sir Llew Edwards, Professor Mervyn Eadie and Professor John Pearn provided an audience of 250 guests with a fascinating insight into research during the early years of medicine in Brisbane. International guests, Professors Steve Smith and Ranga Krishnan and Monash University Vice-Chancellor Professor Ed Byrne shared their experiences of Academic Health Science Centres (AHSC) – created by linking up universities and hospitals in pursuit of a tripartite mission of excellence in clinical care, research and training. Faculty Executive Dean, Professor Nicholas Fisk hosted a think tank on AHSCs with university and hospital representatives to explore the way forward for the concept in Australia. Professor Fisk said patient care in Australia would fall below the standards in leading developed nations without a move to more joined-up institutions.

## TOURETTE SYNDROME ASSOCIATION OF AUSTRALIA FORUM

UQCCR hosted the Tourette Syndrome of Australia Association meeting on 1 May 2010. The meeting provided a forum for people directly affected by Tourette's to come together with clinicians to discuss new research and potential treatments. The meeting was hosted by UQCCR Associate Investigator Professor Peter Silburn.

## SCIENCE SESSIONS AT MCDOWALL STATE SCHOOL

UQCCR has continued its engagement with McDowall State School with scientists from UQCCR presenting fifteen 2-hour science sessions for students. Topics included exploring magnets, gases and germs, and food science. UQCCR staff also presented a science day for last day of school. The day was spent exploring fun science activities and concluded with a presentation on what scientists do and explanations on topics including global warming and medical research.

## INAUGURAL MEETING OF NEUROIMMUNOLOGY AUSTRALIA

The Inaugural Meeting of Neuroimmunology Australia was held at UQCCR on 7 May 2010 and hosted by UQCCR researchers Professor Pamela McCombe and Dr Judith Greer. Neuroimmunology Australia is a collective of neurologists, basic immunologists and clinical immunologists with an interest in immune-mediated diseases of the central nervous system, the peripheral nerves, the neuromuscular junction, the autonomic nervous system and skeletal muscle. The aims of the group are to provide a forum for scientific discussion of these topics and to hold workshops from time to time on these topics.

## ROTARY NATIONAL YOUTH SCIENCE FORUM

UQCCR staff donated time and monies to allow Isabella Benfer, a Year 12 at Stuartholme School and Rotary National Youth Science Forum winner to attend the 2010 Euroscience Open Forum in Turin Italy. Isabella presented an account of this international scientific conference to her peers as part of the Rotary School Speaking Program.

## PARKINSON'S DISEASE SEMINAR

Professor Peter Silburn also hosted a seminar on Parkinson's Disease on 17 March 2010, aimed at bringing together clinicians, researchers and people affected by the disease. This was followed in September with the Parkinson's Awareness Week & Book Launch at UQCCR.

## INTRODUCING ADDICTION NEUROETHICS

### Keynote Lecture:

Dopamine induced compulsive behavior: implications for addiction Professor Wayne Hall

With the Queensland Brain Institute, the Addiction Neuroethics Unit at UQCCR presented a one-day conference on 9 April 2010 on the ethical, social, and policy implications of neurobiological research in addiction involving discussions and debates with leading Australian researchers from a range of fields, including psychopharmacology and cognitive neuropsychology, addiction psychiatry, neurology, philosophy, ethics, public health, law and science communication, in order to generate debate and discussion across disciplines. Each session featured a keynote presentation that explored an important question in addiction neuroethics, followed by responses from several speakers before being opened up for discussion.

03  
SCIENCE SESSIONS  
AT MCDOWALL STATE  
SCHOOL

04  
PROFESSOR  
WAYNE HALL



# FUTURE RESEARCH

THEME LEADER

EQUIPMENT GRANTS

CANCER AUSTRALIA RESEARCH





*Above*  
CLINICAL TRIALS  
CONDUCTED  
AT UQCCR

*Far Right*  
PROFESSOR  
TIMOTHY WALSH

### THEME LEADER

As 2010 drew to a close, UQCCR welcomed a new Group leader, Professor Timothy Walsh from University of Cardiff, UK. Professor Walsh's research is focused on unusual mechanisms of antimicrobial resistance and how they are mobilised into the clinical sector and spread once established. He has published over 140 papers, in particular on the characterisation of unusual  $\beta$ -lactamases within gram-negative bacteria, in journals such as Clinical Microbiological Reviews and Journal of Clinical Microbiology and his research has been funded by the Wellcome Trust, European Union, British Society of Antimicrobial Chemotherapy, BBSRC, Merck and the Jones Microbiology Institute. His research group is very interested in developing antimicrobial peptides and have an ongoing project sponsored by the Wellcome Trust. The peptides of interest (termed RTA peptides) are produced by *Streptococcus mitis* and are highly active against *Pseudomonas aeruginosa* and *Acinetobacter* spp. Professor Walsh will be joining UQCCR as Co-Theme Leader of the Infection and Immunity theme with Professor Paterson.

### EQUIPMENT GRANTS

UQCCR was also the recipient of a three equipment awards in December 2010, enabling the purchase of a NextGen sequencer, a new blood-gas analyser and an EEG machine, which will help advance acute brain monitoring to improve outcomes for neurocritical patients. The new equipment will be purchased in 2011 and will provide a significant boost to the research grants submitted next year.

### CANCER AUSTRALIA RESEARCH

UQCCR researcher, Associate Professor Camile Farah, has received funding from Cancer Australia to assess the effectiveness of a new imaging technique for the early detection of oral precancerous lesions. Oral cancer is a deadly disease that affects roughly 2000 people in Australia each year with very poor survival from the treatment. Early detection is the key to improving mortality and morbidity and this project will assess the technique both for the accuracy of early detection and the accuracy of delineation of the surgical margin of oral mucosal lesions.



PROFESSOR WALSH'S RESEARCH IS  
FOCUSED ON UNUSUAL MECHANISMS  
OF ANTIMICROBIAL RESISTANCE AND  
HOW THEY ARE MOBILISED INTO THE  
CLINICAL SECTOR AND SPREAD ONCE  
ESTABLISHED.



# APPENDICES

## APPENDIX 1

RESEARCH GRANTS 2010

## APPENDIX 2

PUBLICATIONS 2010

## APPENDIX 3

CONFERENCE PRESENTATIONS 2010

## APPENDIX 4

SEMINARS HELD AT UQCCR 2010

## APPENDIX 5

RESEARCH HIGHER DEGREE STUDENTS 2010

## APPENDIX 6

CLINICAL TRIALS 2010

## APPENDIX 7

STAFF LISTING 2010



APPENDIX ONE

RESEARCH GRANTS 2010

New grants awarded in 2010 with a UQCCR lead investigator totalled \$5,996,134. UQCCR researchers are indicated in bold.

GRANTING BODY	INVESTIGATORS	PROJECT TITLE	DATES	VALUE
Australian Research Council	<b>Copland DA</b>	Optimising how the brain processes language in healthy and neurological populations	2010-2014	\$813,192
National Breast Cancer Foundation	<b>Simpson PT</b>	NBCF Early Career Fellowship: Invasive lobular carcinoma of the breast: delineating mechanisms of behaviour and improving outcome	2010-2014	\$660,000
Cancer Australia	<b>Farah CS</b> , Do L	Autofluorescence imaging for early detection and surgical margin delineation of oral cancers and pre-cancers	2011-2014	\$507,392
Royal Children’s Hospital Foundation	<b>Lavin MF</b>	Generation and characterisation of Neural Stem Cells from ataxia telangiectasia patients	2010-2012	\$501,765
Qatar University	<b>Colditz PB, Boualem B</b>	EEG signal classification for newborn outcome prediction after perinatal brain injury  <i>Total funding for the project US \$1,013,860</i>	2010-2013	\$354,851
Qatar University	<b>Colditz PB, Boualem B</b>	Design of a computer-automated system for fetal movement classification in the case of high-risk pregnancies using advanced signal processing algorithms  <i>Total funding for the project US \$949,282</i>	2010-2013	\$332,248
National Health and Medical Research Council	<b>Partridge B</b>	NHMRC Training (Postdoctoral) Fellowship: Smart drugs: What do members of the public think about using prescription drugs to improve cognitive performance	2011-2015	\$325,000
National Health and Medical Research Council	<b>Paterson DL</b>	NHMRC Practitioner Fellowship: Clinical implications of newer beta-lactamases	2010-2015	\$300,625
National Health and Medical Research Council	<b>Pelekanos R</b>	NHMRC Training (Postdoctoral) Fellowship: Strategies to enhance the migratory and therapeutic potential of mesenchymal stem cells for myocardial repair	2010-2014	\$290,032
Australian Research Council	<b>Lucke JC</b> , Loxton DJ, Lee C, Dobson AJ, Fraser IS, Weisberg EA	A longitudinal study of patterns of contraception use and access to contraceptive information, advice and services for young Australian women	2011-2013	\$286,602
National Health and Medical Research Council	<b>Carter A</b>	NHRMC Training Fellowship	2010-2013	\$285,000

GRANTING BODY	INVESTIGATORS	PROJECT TITLE	DATES	VALUE
National Health and Medical Research Council	<b>Rice GE</b> , Lappas M, Permezel M	Molecular mechanisms regulating spontaneous onset of human labour	2010-2011	\$256,735
Fight Cancer Foundation	<b>Rice GE</b>	Biomarkers of ovarian cancer	2010	\$248,562
Multiple Sclerosis Research Australia	<b>Yan J</b>	NFKBIA mutations as a mechanism leading to constitutive activation of NF-kB in patients with primary progressive MS	2011-2012	\$170,000
Heart Foundation	<b>McCombe PA, Greer JM, Read S, Rose SE</b> , Henderson R	Nature and timing of inflammation after acute ischaemic stroke	2011-2012	\$130,000
Motor Neurone Disease Research Institute of Australia	<b>McCombe PA</b> , Henderson R, <b>Rose SE</b> , Pettit AN	Comprehensive assessment of MND patients as a means to studying progression and identifying disease subtypes	2010-2011	\$120,000
Royal Brisbane & Women’s Hospital Research Foundation	<b>Scott J</b>	Does exposure to childhood trauma alter the presentation and clinical outcomes of patients with early psychosis	2011	\$38,000
Royal Brisbane and Women’s Hospital	<b>Khosrotehrani K</b>	Predictive value of STAT5 activity in melanoma metastasis and survival	2011	\$33,000
Royal Brisbane & Women’s Hospital	<b>McCombe PA</b>	Nature and timing of inflammation after acute ischaemic stroke	2011	\$30,000
Royal Brisbane & Women’s Hospital Research Foundation	<b>Farah CS</b>	The Characterisation of miRNA signatures in the progression of oral dysplasia	2011	\$30,000
Royal Brisbane & Women’s Hospital Research Foundation	<b>Lakhani SR</b>	Applying Inducible Pluripotent Stem (iPS) Cell Technology to Study Breast Lineage Differentiation and Tumourigenesis	2011	\$30,000
Royal Brisbane & Women’s Hospital Research Foundation	<b>McCombe PA</b>	Immunogenetic studies of Guillain-Barre Syndrome and Chronic inflammatory demyelinating polyradiculoneuropathy	2011	\$30,000
The University of Queensland	<b>Sullivan SM</b>	Hypothermia and erythropoietin as a rescue treatment for hypoxic / ischemic injury in the term piglet brain	2011-2012	\$30,000
The University of Queensland	<b>Rodero M</b>	Modulating macrophage recruitment and activation to improve wound healing	2011	\$30,000
The University of Queensland	<b>Ireland Z</b>	Antenatal corticosteroid treatment and the very preterm brain	2011-2012	\$29,180
Royal Brisbane & Women’s Hospital Research Foundation	<b>Gardiner RA</b>	Towards Concurrent Imaging of Primary & Secondary Prostate Cancers	2011	\$29,000
Multiple Sclerosis Research Australia	<b>Greer JM, Yan J</b>	Do PLP1 mutations found in MS patients lead to the unfolded protein response and apoptosis of PLP-expressing cells?	2010-2011	\$26,979



GRANTING BODY	INVESTIGATORS	PROJECT TITLE	DATES	VALUE
Royal Brisbane & Women's Hospital Research Foundation	<b>Farah CS</b>	Narrow band imaging in conjunction with autofluorescence in head and neck cancer patients. Is optical diagnosis possible?	2010-2011	\$20,000
Australasian College of Dermatologists	<b>Khosrotehrani K</b>	Persisting host dermal and epidermal antigen presenting cells as predictors of chronic graft versus host disease	2011	\$15,000
Australasian College of Dermatologists	<b>Rodero M</b>	Molecular markers to predict sentinel lymph node invasion and 5 year and 10 year outcomes in patients with stage I and II primary melanoma	2011	\$15,000
The University of Queensland	<b>Rodero M</b>	Modulating macrophage recruitment and activation to improve wound healing	2011	\$12,000
Royal Brisbane and Women's Hospital	<b>Moxon Lester L</b>	Does S-adenosylmethionine ameliorate retinal ischemic injury by restoring creatine synthesis and transport in the retina	2010-2011	\$11,000
The University of Queensland	<b>Lucke JC</b>	UQ Travel Awards Category 2 – Associate Professor Jayne Catherine Lucke	2011	\$3,823
The University of Queensland	<b>Mesbah M, Colditz PB, Finnigan S</b>	Classification of Newborn Electroencephalogram for Prognosis using Joint Time-Frequency Signal Analysis	2010-2011	\$3,439

UQCCR also received three equipment grants as part of the 2010 Major Equipment Initiative. UQCCR researchers are indicated in bold.

GRANTING BODY	INVESTIGATORS	PROJECT TITLE	DATES	VALUE
National Health and Medical Research Council	<b>Pow DV</b>	Macroscopic fluorescence imaging system for identifying and isolating transgenically tagged cells	2010	\$39,000
The University of Queensland	<b>Khosrotehrani K, Lavin MF, Pettit A, Raggatt L, Fisk NM</b>	Multi-user small animal digital x-ray imaging machine for bone, cancer, inflammation and stem cell research	2010	\$36,365
National Health and Medical Research Council / Queensland Institute of Medical Research / The University of Queensland	<b>Reutens DA, Copland D, Breakspear M, Colditz PB, Rose SE, Wright M, de Zubicaray G, Hocking J</b>	Integrated brain imaging and electrophysiology for clinical neurosciences	2010	\$150,000

New grants awarded in 2010 where a UQCCR investigator is part of the research team totalled \$8,776,391. UQCCR researchers are indicated in bold.

GRANTING BODY	INVESTIGATORS	PROJECT TITLE	DATES	VALUE
National Health and Medical Research Council	Dobson AJ, Mishra G, Brown W, Lee C, Pachana N, Byles J (CIA-CIF); Loxton D, <b>Lucke JC</b> , Sibbritt D, Tooth L (Associate Investigators)	Centre of Research Excellence in Women's Health in the 21st Century (CREWH21)	2011-2014	\$2,190,625
National Health and Medical Research Council	Hunt R, <b>Colditz PB</b> , Inder T, Badawi N, Simmer K, Liley H, Osborn D, Cheong J, Wright I	A study of the impact of treating electrographic seizures in term or near-term infants with neonatal encephalopathy	2011-2014	\$1,301,310
National Health and Medical Research Council	Clements A, <b>Paterson DL</b>	Clostridium difficile: assessing the risks to Australia of an emerging healthcare-related pathogen	2011-2014	\$936,321
National Health and Medical Research Council	Weinstein P, <b>Fisk NM</b> , Cook A	Prospective study of birth defects from fetotoxic agents in the public water supply	2011-2014	\$703,124
National Health and Medical Research Council	Cooper M, <b>Paterson DL</b>	Development of Novel Hybrid Antibiotics for the Treatment of Hospital and Community Acquired Drug Bacterial InfectionsNegative and Gram-PostitiveResistant Gram-	2011-2014	\$689,784
National Health and Medical Research Council	Golledge J, Rush C, <b>Walker PJ</b> , Fitridge R, Muller R	The role of the clotting cascade in aortic aneurysm and associated cardiovascular events	2011-2014	\$619,911
National Health and Medical Research Council	Ames D, Givson S, <b>Byrne G</b> , Katz B	RCT of analgesic medications to modify behavioural and psychological symptoms of dementia	2011-2014	\$552,556
National Health and Medical Research Council	Boyd R, Ziviani J, Abbott D, <b>Rose SE</b> , Macdonell R	COMBIT: Randomised Controlled Trial of Novel Upper Neurorehabilitation for Congenital Hemiplegia	2011-2014	\$469,793
National Health and Medical Research Council	Gethin T, <b>Pettit A</b>	Novel treatment approaches to prevent joint fusion in ankylosing spondylitis	2011-2014	\$461,473
National Health and Medical Research Council	Patton G, Degenhardt L, Olsson C, Carlin J, <b>Hall WD</b>	Mental Disorders and the Social Transitions of Adulthood: a 20- year follow-up of the Victorian Adolescent Health Cohort Study	2011-2014	\$426,879
National Health and Medical Research Council	Mellick G, Mackay-Sim A, Wood S, <b>Silburn PA</b> , Wells C, Cook A	Human olfactory neurospherederived cells: a novel cellular model for Parkinson's disease.	2011-2014	\$394,615
Royal Brisbane & Women's Hospital Foundation	McRae P, Mudge A, <b>Walker PJ</b> , Dunglison N, <b>Gardiner RA</b> , Williams H, de Ruiter C, Cruikshank M, Barnbrook C, Woollett K, Slaughter B	Identifying interdisciplinary care needs in older surgical inpatients	2011	\$30,000



Ongoing research at UQCCR in 2010. UQCCR researchers are indicated in bold.

GRANTING BODY	INVESTIGATORS	PROJECT TITLE	DATES	VALUE
ANZ Trustees Limited	<b>Zankl A</b>	Development of an integrated knowledge base for skeletal dysplasias	2007-2010	\$50,000
Australian Research Council	<b>Hodges PW</b> , Ashton-Miller JA, Christantinou CE, <b>Gardiner RA</b> , <b>Coughlin GD</b> , Sapsford R	Urinary continence & incontinence in men: New insights through New technologies	2010-2013	\$285,000
Australian Research Council	<b>Copland DA</b> , McMahon KL, <b>Silburn PA</b> , Nathan PJ	How does dopamine modulate adult new word learning?	2010-2012	\$210,000
Australian Research Council	<b>Copland DA</b> , Nickels L, McMahon KL, Angwin A	Neurocognitive substrates of naming facilitation in aphasia	2008-2010	\$323,000
Australian Research Council	<b>Lavin MF</b>	Characterisation of the novel mitochondrial protein (CABC1/ADCK3) and its role in protecting against oxidative stress	2010-2012	\$300,000
Australian Research Council	<b>Lavin MF</b> , De Jersey J, Guddat LW, Trabi M, Baker A	Pre-clinical evaluation of snake venom proteins with therapeutic potential	2008-2011	\$3,154,751
Australian Research Council	<b>Lavin MF</b> , Roberts TL	To investigate the role of the protein kinase SMG-1 in the stress response	2010-2012	\$285,000
Australian Research Council	<b>Mesbah M</b> , <b>Colditz PB</b> , East C, Smeathers JE, <b>Boashash B</b>	Detection and Quantification of General Fetal Movements from Accelerometer Measurements using Nonstationary Signal Processing Techniques	2010-2012	\$150,000
Australian Stem Cell Centre	<b>Fisk NM</b> , Wolvetang E and <b>Raggatt LJ</b>	Primitive iPS-derived MSC for Bone Repair	2009-2011	\$97,178
Cancer Bequest Fund	<b>Lakhani SR</b>	Molecular Pathology	2005-2010	\$1,000,000
Cancer Council Queensland	<b>Gardiner RA</b> , Dunglison N, Yaxley J, Stegingu S, Occhipinti S, Carter R, Williams S, <b>Lavin MF</b>	A Randomised Trial of Robotic and Open Prostatectomy: Integrates Multidisciplinary Studies to Guide Patient Management – a Partnership of Cancer Council Queensland and The University of Queensland	2009-2013	\$1,250,000
Cancer Council Queensland	<b>Gardiner RA</b> , Clarke R, <b>Lavin MF</b> , Doecke, Samaratunga H, Yaxley J	Molecular strategies for staging prostate cancer	2009-2010	\$180,400
Cancer Council Queensland	<b>Simpson PT</b>	Improving the outcome of patients with invasive lobular carcinoma of the breast	2010-2011	\$92,972

GRANTING BODY	INVESTIGATORS	PROJECT TITLE	DATES	VALUE
Ludwig Institute for Cancer Research	<b>Lakhani SR</b>	Ludwig Institute for Cancer Research Fellowship	2009-2011	\$834,000
Mayne Bequest Fund	<b>Colditz PB</b>	Neuroexcitatory receptor ontogeny and distribution in the piglet brain	2003-2010	\$160,000
Mayne Bequest Fund	<b>Paterson DL</b>	Clinical and molecular epidemiology of antibiotic resistant bacteria	2007-2010	\$300,000
Multiple Sclerosis Research Australia	<b>Greer JM</b> , Pender MP	Development of specific immunomodulatory agents for Multiple Sclerosis affecting the brainstem and cerebellum	2009-2011	\$165,000
Multiple Sclerosis Research Australia	<b>Greer JM</b>	Molecular interactions underpinning lesion localization in multiple sclerosis.	2010-2012	\$135,000
Multiple Sclerosis Research Australia	<b>Greer JM</b>	The effects of pregnancy and the post-partum period on T cells, antibodies, and gene expression in EAE	2009-2011	\$104,500
National Breast Cancer Foundation	<b>Smart CE</b> , <b>Lakhani SR</b> , Chenevix-Trench G, Khanna K	Investigating Luminal and Basal Cell Difference: Molecular and Functional Characterization of the Normal Breast Epithelia	2009-2011	\$185,045
National Health and Medical Research Council	<b>Lakhani SR</b> , Chevenix-Trench G, Khanna K	Beyond BRCA1 and BRCA2: pathways to breast cancer (NHMRC Program grant administered by QIMR)	2007-2011	\$1,806,420
National Health and Medical Research Council	<b>Björkman T</b> , <b>Colditz PB</b> , Dodd PR, <b>Pow DV</b>	GABA excitotoxicity, neuroprotection and the perinatal brain	2009-2011	\$526,500
National Health and Medical Research Council	<b>Buller KM</b> , <b>Colditz PB</b> , Gobe GC	Mechanisms contributing to long-term neuronal loss after hypoxia-ischemia in the premature neonate brain	2008-2010	\$413,375
National Health and Medical Research Council	<b>Colditz PB</b> , Brennecke S, East C, Sullivan C, Crozier S, Wilson SJ, Portman C, Hyett JA, <b>Mesbah M</b> , Flenady V, Yee Chan F, Jones IS	Ambulatory fetal activity monitoring predicts clinical outcome	2007-2010	\$406,775
National Health and Medical Research Council	<b>Copland DA</b>	NHMRC Career Development Award (Clinical – Level 2): Neurorehabilitation of aphasia	2008-2012	\$429,000
National Health and Medical Research Council	<b>Farah CS</b>	The assessment of clinical and molecular adjunctive tools for the early detection of oral mucosal neoplasia	2008-2010	\$436,000
National Health and Medical Research Council	<b>Finnigan S</b>	NHMRC Career Development Award (Industry – Level 1): Protecting newborn brains via innovative monitoring technology	2010-2014	\$390,000



GRANTING BODY	INVESTIGATORS	PROJECT TITLE	DATES	VALUE
National Health and Medical Research Council	<b>Fisk NM,</b> Bou-Gharios G, <b>Khosrotehrani K,</b> <b>Raggatt LJ</b>	Functional contribution of fetal microchimeric cells in transgenic models of maternal tissue repair in & after pregnancy	2009-2011	\$521,500
National Health and Medical Research Council	<b>Fisk NM,</b> <b>Pettitt AR,</b> <b>Khosrotehrani K,</b> <b>Raggatt LJ,</b> Steck R, <b>Zankl A</b>	Preclinical optimisation of intrauterine transplantation of fetal mesenchymal stem cells for osteogenesis imperfecta	2010-2012	\$579,500
National Health and Medical Research Council	<b>Gartner CE</b>	NHMRC Training Fellowship (Aust. Based Public Health): Evaluating the effectiveness of future tobacco control strategies	2008-2012	\$321,929
National Health and Medical Research Council	<b>Greer JM</b>	Mechanisms of lesion localiation in multiple sclerosis	2007-2010	\$427,750
National Health and Medical Research Council	<b>Hall WD</b>	Addiction Genetics, Neurosciences and Public Health: Maximising the Benefits, Minimising the Pitfalls	2009-2014	\$4,000,000
National Health and Medical Research Council	<b>Hodges PW,</b> Sterling M, Nicholas M, Cholewicki J, Barbe M, Moseley G, Khan A	Why do people keep hurting their back: A longitudinal study of biological, psychological and social predictors	2010-2013	\$709,521
National Health and Medical Research Council	<b>Lakhani SR,</b> Stratton M, Clarke C, <b>Simpson PT</b>	Molecular Profiling of Breast Tumour Stem / Progenitor Cells	2007-2010	\$269,750
National Health and Medical Research Council	<b>Lavin MF,</b> Kozlov S, Graham M, Robinson P	ATM Activation and its functional Importance in DNA damage response	2009-2011	\$533,750
National Health and Medical Research Council	<b>Lavin MF</b>	NHMRC Senior Principal Research Fellowship	2007-2011	\$736,250
National Health and Medical Research Council	<b>Lavin MF,</b> Dork T	Rad50 protects the integrity of the genome to minimise disease risk	2010-2012	\$505,500
National Health and Medical Research Council	<b>Lavin MF</b>	Role of Senataxin in protecting against neurodegeneration	2010-2012	\$520,500
National Health and Medical Research Council	<b>Lingwood BE,</b> <b>Colditz PB,</b> Lumbers ER, Evans N, Osborn DA	Improving Outcomes for Premature Infants Through Effective Maintenance of Systemic Blood Flow	2009-2011	\$758,750
National Health and Medical Research Council	<b>McCombe PA,</b> Henderson R, Pettitt AN, Ridall GR, Bellingham MC	Development of a new method of motor unit number estimation for use in motor neurone disease	2009-2011	\$461,250

GRANTING BODY	INVESTIGATORS	PROJECT TITLE	DATES	VALUE
National Health and Medical Research Council	<b>Pettit AR</b>	NHMRC Career Development Award (Biomedical – Level 1): Osteal macrophages: novel regulators of osteoblast function and the endosteal stem cell niche	2008-2012	\$422,840
National Health and Medical Research Council	<b>Pettit AR,</b> <b>Raggatt LJ</b>	Regulation of Bone Dynamics by Osteal Tissue Macrophages (Osteomacs)	2010-2012	\$714,372
National Health and Medical Research Council	<b>Pow DV,</b> Poronnik P, <b>Colditz PB,</b> <b>Björkman T</b>	A novel marker of distressed neurons in the hypoxic brain: Regulation, function and potential clinical utility	2009-2011	\$506,250
National Health and Medical Research Council	<b>Pow DV,</b> <b>Barnett NL,</b> <b>Lingwood B,</b> <b>Björkman T</b>	Astrocyte regulation of Ammonia and Glutamate in Neonatal Hypoxia / Ischaemia	2010-2012	\$505,125
National Health and Medical Research Council	<b>Pow DV,</b> Provis J, Taylor S, <b>Barnett NL,</b> Woodruff TM, Kwan A	Characterizing novel therapeutic interventions in a new model of focal retinopathy	2009-2011	\$516,250
National Health and Medical Research Council	<b>Pow DV</b>	NHMRC Research Fellowship (SRFB)	2008-2010	\$321,063
National Health and Medical Research Council	<b>Rice GE</b>	NHMRC Research Fellowship (PRF)	2010-2014	\$702,795
National Health and Medical Research Council	<b>Rose SE,</b> Crozier S, Salvado O, Coulthard A, Thomas P, Fay M, <b>Winter C,</b> Bourgeat P	Improving the assessment of brain tumour treatment outcome using 18F-FDOPA PET-MRI	2010-2012	\$537,125
National Health and Medical Research Council	<b>Sullivan SM</b>	NHMRC Training Fellowship: Astrocytes: A possible target to treat hypoxic brain damage	2009-2013	\$342,973
National Heart Foundation of Australia	<b>McCombe PA,</b> <b>Greer JM,</b> Read S, Chalk JB, Henderson R	Immune responses in stroke	2009-2010	\$136,400
National SIDS Council of Australia	<b>Colditz PB</b>	Ambulatory fetal activity monitoring predicts clinical outcome	2009-2010	\$98,698
Ophthalmic Research Institute of Australia	<b>Barnett NL,</b> Gole G	The effects of a transient elevation of IOP upon retinal function and structure (ORIA Project)	2009-2010	\$26,576
Prostate Cancer Foundation of Australia	<b>Gardiner RA,</b> Clarke R, <b>Lavin MF</b>	The Relationship between PCA3 and BMCC1 in prostate cancer development and detection	2009-2011	\$394,390
Queensland and Northern New South Wales Lions Medical Research Foundation	<b>Buller KM</b>	Senior Medical Research Fellowship – ‘Better late than never: strategies to ameliorate brain injury in the preterm neonate after a hypoxic-ischemic insult’	2007-2010	\$247,500



GRANTING BODY	INVESTIGATORS	PROJECT TITLE	DATES	VALUE
Queensland Cancer Council	<b>Simpson PT,</b> Reis Filho J, Ellis E, Viale G, Waddell N, <b>Lakhani SR</b>	Improving the outcome of patients with invasive lobular carcinoma of the breast cancer	2010-2011	\$180,000
Queensland Health Senior Clinical Research Fellowship	<b>Paterson DL</b>	Prevention and Treatment of Infections with Antibiotic Resistant Bacteria	2010-2015	\$425,000
Queensland Nursing Council	<b>Pritchard M</b>	Developmental surveillance in high-risk children: a nursing response to a growing health service dilemma (6 month cohort study)	2010	\$8,237
Ramaciotti Foundation	<b>Fisk NM</b>	A Multi-user Cell Sorting Facility	2010-2011	\$50,000
Ramaciotti Foundation	<b>Khosrotehrani K</b>	Influence of dermal fibroblasts on epidermal stem cell homeostasis in a model of ageing	2009-2010	\$30,000
Royal Brisbane & Women's Hospital Foundation	<b>Allworth A</b>	In-vitro induction of macrolide resistance in Staphylococcus aureus and Streptococcus spp. by exposure to sub-MIC concentrations of azithromycin	2009-2010	\$3,500
Royal Brisbane & Women's Hospital Foundation	<b>Colditz PB</b>	Ambulatory fetal activity monitoring predicts clinical outcome	2007-2010	\$12,231
Royal Brisbane & Women's Hospital Foundation	<b>Colditz PB</b>	Brain Research Advances in Newborns (The BRAIN Project)	2009-2014	\$205,000
Royal Brisbane & Women's Hospital Foundation	<b>Colditz PB</b>	Physiological Monitoring Systems	2009-2010	\$54,000
Royal Brisbane & Women's Hospital Foundation	<b>Farah CS</b>	Narrow band imaging in conjunction with autofluorescence in head and neck cancer patients. Is optical diagnosis possible?	2010-2011	\$5,000
Royal Brisbane & Women's Hospital Foundation	<b>Gardiner RA</b>	Detection of prostate cancer and its prognosis using prostatic fluid	2010-2011	\$20,000
Royal Brisbane & Women's Hospital Foundation	<b>Lakhani SR</b>	Clinical and molecular analysis of multifocal / multicentric in-situ and invasive breast cancers	2009-2011	\$55,000
Royal Brisbane & Women's Hospital Foundation	<b>McCombe PA</b>	Mechanisms leading to constitutive activation of transcription factor NFkB in chronic progressive multiple sclerosis	2010	\$20,000
Royal Brisbane & Women's Hospital Foundation	<b>Paterson DL</b>	Hospital outbreaks of anitbiotic resistant bacteria	2009-2010	\$55,000
Royal Brisbane & Women's Hospital Foundation	<b>Pritchard M</b>	Developmental surveillance in high risk children: a nursing response to a growing health service dilemma	2010	\$4,125

GRANTING BODY	INVESTIGATORS	PROJECT TITLE	DATES	VALUE
Royal Brisbane & Women's Hospital Foundation	<b>Sullivan SM, Colditz PB</b>	Understanding the role of novel GFAP isoforms in neuroprotection of the brain after hypoxia-ischemia	2010	\$19,000
Royal Brisbane & Women's Hospital Foundation	<b>Walker P</b>	Improving surgical outcomes through post operative rehabilitation in patients with peripheral arterial disease	2010	\$22,000
Royal Brisbane & Women's Hospital Foundation	<b>Zankl A</b>	Skeletome – An integrative knowledgebase for clinical and molecular data on skeletal dysplasias	2010-2012	\$75,000
Royal Children's Hospital	<b>Lavin MF</b>	Generation and characterisation of Neural Stem Cells from Ataxia-Telangiectasia patients	2010-2012	\$250,883
Royal Children's Hospital	<b>Zankl A</b>	A registry and clinical surveillance service for patients with genetic bone disorders	2008-2012	\$82,500
The JO and JR Wicking Trust	<b>Pow DV, Barnett NL</b>	Micro-haemorrhage as an initiating factor for Alzheimer's disease and Age related Macular degeneration: examining a novel rat model	2009-2010	\$45,000
The University of Queensland	<b>Finnigan S</b>	NHMRC Career Development Award (Industry – Level 1): Protecting newborn brains via innovative monitoring technology	2010-2014	\$20,000
The University of Queensland	<b>Holmes A</b>	An investigation of lexical-semantic maintenance: EEG correlates and relationships with working memory span and attentional control	2009-2010	\$12,000
The University of Queensland	<b>Saunus J</b>	Applying Inducible Pluripotent Stem (iPS) Cell Technology to Mammary Biology Research	2010	\$25,000
The University of Queensland	<b>Sullivan SM</b>	Are astrocytes key regulators of brain damage in neonatal hypoxia-ischemia	2009-2011	\$12,500
The Wiseman Trust	<b>Fisk NM</b>	Large-scale clinical trial of best treatment in Stage 1 Twin Twin Transfusion Syndrome	2009-2010	\$210,000
University of Melbourne	<b>Byrne G</b>	A multicentre randomized clinical trial of physical activity for treatment of patients with Alzheimer's Disease – Fitness for the Ageing Brain Study II – FABS II (NHMRC Project administered by the University of Melbourne)	2009-2011	\$147,612
University of Sydney	<b>Hall WD</b>	What characterises influential population-oriented public health policy research in Australia? (NHMRC Project Grant administered by the University of Sydney)	2009-2010	\$129,500
Venomics Pty Limited / ARC Linkage Grant	<b>Lavin MF</b>	Pre-clinical evaluation of snake venom proteins with therapeutic potential	2008-2011	\$3,154,751
Wesley Research Institute Limited	<b>McCombe PA, Read S, Greer JM</b>	Immune Response to stroke	2008-2011	\$110,000

GRANTING BODY	INVESTIGATORS	PROJECT TITLE	DATES	VALUE
Australian and New Zealand Intensive Care Foundation	Lipman J, Dulhunty J, <b>Paterson DL</b>	Pilot RCT of continuous beta-lactam infusion compared with intermittent dosing in critically ill patients  Collaborating School: UQ School of Medicine	2010-2011	\$20,000
Australian Research Council	Hunter JL, <b>Zankl A</b>	Skeletome – A Curated Online Knowledge Base Integrating Clinical and Biological Information on Skeletal Dysplasias and Related Conditions  Collaborating School: UQ School of Information Technology and Electrical Engineering	2010-2012	\$273,000
Australian Research Council	McColl S, Hoffmann P, Bernard CC, Carroll W, <b>Greer JM</b> , Smith I	Proteomic analysis of central nervous system inflammation in multiple sclerosis  Collaborating University: University of Adelaide	2009-2012	\$675,000
Australian Research Council	Cooper-White JJ, <b>Fisk NM</b> , Grondahl L, Wolvetang E	Scalable, high throughput microfluidic platforms for tissue specific biomaterials development and tissue genesis  Collaborating Institute: Australian Institute for Bioengineering & Nanotechnology	2010-2012	\$400,000
National Breast Cancer Foundation	Chopin L, <b>Simpson PT</b> , <b>Lakhani SR</b> , Bennet I, Hill M	Understanding the heterogeneity of invasive ductal breast cancers – a proteomic approach for the discovery of biomarkers and novel therapeutic targets	2009-2010	\$199,967
National Breast Cancer Foundation	<b>Lakhani SR</b> , Chevenix-Trench G, Khanna K	Towards targeted treatment for advanced basal breast cancers  Collaborating Institute: Queensland Institute of Medical Research	2010-2011	\$199,996
National Health and Medical Research Council	Clements J, Sutherland R, Tilley W, Risbridger G, Marshall V, Roder D, Stahl J, <b>Gardiner RA</b>	Australian Prostate Cancer Collaboration (APCC) Bio-Resource  Collaborating Consortium: Australian Prostate Cancer Collaboration (APCC)	2010-2014	\$2,000,000
National Health and Medical Research Council	Cooper M, <b>Paterson DL</b>	Vancomycin derivatives active against resistant bacterial nosocomial infections  Collaborating Institute: Institute for Molecular Bioscience	2010-2014	\$763,975
National Health and Medical Research Council	Worrall L, <b>Copland DA</b>	CCRE in Aphasia Rehabilitation  Collaborating School: UQ School of Health & Rehabilitation Science	2009-2014	\$2,500,000
National Health and Medical Research Council	Stowasser M, Leo PJ, Duffy D, Gordon RD, Brown MA, Whitehead JP, <b>Lakhani SR</b>	Elucidating genetic mechanisms responsible for familial hyperaldosteronism type II  Collaborating School: UQ School of Medicine	2010-2012	\$409,125
National Health and Medical Research Council	Montieth G, Roberts-Thompson S, Parat M, <b>Simpson PT</b>	Calcium influx pathways and breast cancer  Collaborating School: UQ School of Pharmacy	2009-2011	\$382,000

GRANTING BODY	INVESTIGATORS	PROJECT TITLE	DATES	VALUE
National Health and Medical Research Council	Mowry B, Holliday E, Visscher P, Brown MA, <b>Rose SE</b> , Pantelis C	Identifying eQTLs and endophenotyping known CNSv in a large Australian schizophrenia sample  Collaborating School: UQ School of Medicine	2010-2012	\$885,750
National Health and Medical Research Council	Taylor SM, Woodruff TM, Callaway LK, Finnell R, <b>Colditz PB</b>	Complement C5a Receptors , Placental Inflammation and Reproductive Impairment  Collaborating School: UQ School of Biomedical Sciences	2009-2013	\$774,200
National Health and Medical Research Council	<b>Lakhani SR</b> , Chevenix-Trench G, Khanna K	Beyond BRCA1 and BRCA2: Pathways to breast cancer  Collaborating Institute: Queensland Institute of Medical Research	2007-2011	\$1,806,420
National Health and Medical Research Council	Montieth G, Roberts-Thompson S, Parat M, <b>Simpson PT</b>	Calcium influx pathways and breast cancer  Collaborating School: UQ School of Pharmacy	2009-2011	\$382,000
National Health and Medical Research Council	Steginga SK, <b>Gardiner RA</b> , Nicol DL, Aitken J, Occhipinti S	Predicting and promoting Long-term adjustment for men with localised prostate cancer: Proscan  Collaborating University: Griffith University	2007-2011	\$289,563
National Health and Medical Research Council	Steginga SK, Shover L, Halford K, Occhipinti S, <b>Gardiner RA</b> , Dunn J	Randomised controlled trial of early intervention to improve sexual and couple functioning after prostate cancer  Collaborating University: Griffith University	2008-2010	\$577,438
National Health and Medical Research Council	Chenery HJ, Humphreys, Hegney, Byrne, Gallois, <b>Copland DA</b> , Angwin A.J	An efficacy study of cognitive-communicative intervention to improve transition to residential care in dementia  Collaborating School: UQ School of Health and Rehabilitation Sciences	2008-2010	\$639,000
National Health and Medical Research Council	Piguet O, Hodges J, <b>Rose SE</b> , Miller L	Clinical and biological markers of disease presentation and progression in early frontotemporal dementia  Collaborating Institute: Prince of Wales Medical Research Institute	2008-2010	\$647,000
National Health and Medical Research Council	Lipman J, Roberts MS, <b>Paterson DL</b> , Kirkpatrick CMJ, Kruger PS, Roberts J, Rudd M, Weiss M, Jones MA	Antibiotic dosing in the at risk critically ill patient  Collaborating School: UQ School of Medicine	2008-2010	\$589,000
Queensland Emergency Medicine Research Foundation	Williams J, Greenslade J, Lipman J, <b>Paterson DL</b> , Brown AF, Paratz JD, Dulhunty J, Chu K	The Sepsis Registry: A prospective database to characterise and facilitate improved outcome for admitted patients with community-acquired infection  Collaborating School: UQ School of Medicine	2009-2011	\$220,000



GRANTING BODY	INVESTIGATORS	PROJECT TITLE	DATES	VALUE
Queensland Government Smart State National and International Research Alliances Program	Smith MT, Coulson E, Kindy M, <b>Rose SE</b> , Brereton IM, Chalk JB, Whittaker AK	Alzheimer's disease: Novel MRI Biomarkers for Clinical Diagnosis and Translational Studies  Collaborating Centre: UQ's Centre for Integrated Preclinical Drug Development	2009-2012	\$740,820
Queensland Government Smart State National and International Research Alliances Program and University of Queensland	Whittaker AK, Rasoul F, Symons AL, Hawker C, Wooley K, Campbell JH, Chirila TV, Haddleton D, <b>Rose SE</b> , Howdle S	International Biomaterials Research Alliance  Collaborating Institute: Australian Institute for Bioengineering and Nanotechnology	2007-2011	\$1,493,430
Royal Brisbane & Women's Hospital Research Foundation	Coulthard A, <b>Rose SE</b> , Winter C, McMahon KL	A pilot feasibility study for improved neurosurgical planning and postoperative assessment in patients with cerebral tumours using clinical functional MRI and diffusion tensor tractography  Collaborating School: UQ School of Medicine	2009-2010	\$49,500
Foundation for Research Science and Technology, New Zealand	<b>Mitchell MD</b>	Improving cow fertility  Collaboration with Victoria University, Wellington; AgResearch; and Dairy NZ	2008-2013	\$7,000,000
National Research Centre for Growth Development, New Zealand	<b>Mitchell MD</b>	Epigenetics of Parturition	2009-2011	\$509,085
National Research Centre for Growth Development, New Zealand	<b>Mitchell MD</b>	Exposure to environmental chemicals and developmental origins of health and disease: epigenetic regulation of the activities of key genes	2009-2010	\$522,408
National Institute for Allergy and Infectious Diseases (NIAID)	<b>Paterson DL</b>	Optimizing dosing of colistin for infections resistant to all other antibiotics	2007-2012	\$460,000
University of Sydney	Lipman J, Sorrell T, Playford G, Jones M, Iredell J, Craig J, Chen S, Joyce C, Cook P, McBryde E, Ellis D, <b>Paterson DL</b>	Predicting the risk of invasive candidiasis in critically ill patients  Collaborating School: UQ School of Medicine	2008-2011	\$254,000

# APPENDIX TWO

## PUBLICATIONS 2010

UQCCR researchers are indicated in bold.

**1. AbdulHameed AbdulMajeed, A., & Farah, C. S.** (2010). Intra-oral calibre persistent artery. *Journal of Cranio-Maxillofacial Surgery*, 38(5), 331-333.

**2. Al Sayyari, A.,** Buckley, R., McHenery, C., **Pannek, K.,** Coulthard, A., & **Rose, S.** (2010). Distinguishing recurrent primary brain tumor from radiation injury: a preliminary study using a susceptibility-weighted MR imaging-guided apparent diffusion coefficient analysis strategy. *AJNR Am J Neuroradiol.* , 31(6), 1049-1054.

**3.** Alexopoulou, A., Leao, M., Caballero, O., **Da Silva, L., Reid, L., Lakhani, S.,** Simpson, A., Marshall, J., Neville, A. M., & Jat, P. (2010). Dissecting the transcriptional networks underlying breast cancer: NR4A1 reduces the migration of normal and breast cancer cell lines. *Breast Cancer Research*, 12(4), R51.

**4. Ambermoon, P., Carter, A., Hall, W. D., Dissanayaka, N. N.,** & O'Sullivan, J. D. (2010). Impulse control disorders in patients with Parkinson's disease receiving dopamine replacement therapy: evidence and implications for the addictions field *Addiction*, 106(2), 283-293.

**5.** Arnott, W., **Chenery, H. J.,** Angwin, A. J., Murdoch, B. E., **Silburn, P. A., & Copland, D. A.** (2010). Decreased semantic competitive inhibition in Parkinson's disease: Evidence from an investigation of word search performance. *International Journal of Speech-Language Pathology*, 12(5), 437-445.

**6.** Baade, P. D., Aitken, J. F., Ferguson, M., **Gardiner, R. A., & Chambers, S. K.** (2010). Diagnostic and treatment pathways for men with prostate cancer in Queensland: investigating spatial and demographic inequalities. *BMC Cancer.* , 10, 452.

**7.** Badiou, C., Dumitrescu, O., George, N., Forbes, A. R. N., Drougka, E., Chan, K. S., Ramdani-Bougouessa, N., Meugnier, H., Bes, M., Vandenesch, F., Etienne, J., Hsu, L. Y., Tazir, M., Spiliopoulou, I., **Nimmo, G. R.,** Hulten, K. G., & Lina, G. (2010). Rapid detection of Staphylococcus aureus Panton-Valentine leukocidin in clinical specimens by enzyme-linked immunosorbent assay and immunochromatographic tests. *Journal of Clinical Microbiology*, 48(4), 1384-1390.

**8.** Bahlo, M., Stankovich, J., Danoy, P., Hickey, P. F., Taylor, B. V., Browning, S. R., **Multiple Sclerosis Genetics Consortium ANZgene, (Greer J.M.** consortium member), Brown, M. A., & Rubio, J. P. (2010). Saliva-derived DNA performs well in large-scale, high-density single-nucleotide polymorphism microarray studies. *Cancer Epidemiol Biomarkers Prev.* , 19(3), 794-798.

**9.** Balakrishnan, B., Henare, K., Thorstensen, E. B., Ponnampalam, A. P., & **Mitchell, M. D.** (2010). Transfer of bisphenol A across the human placenta. *American journal of obstetrics and gynecology*, 202(4), 393.e391-397.

**10.** Balakrishnan, B., Thorstensen, E. B., Ponnampalam, A. P., & **Mitchell, M. D.** (2010). Transplacental transfer and biotransformation of genistein in human placenta. *Placenta*, 31(6), 506-511.

**11.** Batten, T. F., **Pow, D. V.,** & Saha, S. (2010). Co-localisation of markers for glycinergic and GABAergic neurones in rat nucleus of the solitary tract: implications for co-transmission. *J Chem Neuroanat.*, 40(2), 160-176.

**12. Baumann, F.,** Henderson, R. D., Morrison, S. C., Brown, M., Hutchinson, N., Douglas, J. A., Robinson, P. J., & **McCombe, P. A.** (2010). Use of respiratory function tests to predict survival in amyotrophic lateral sclerosis. *Amyotroph Lateral Scler.*, 11(1-2), 194-202.

**13. Baumann, F, Rose, S. E.,** Nicholson, G. A., Hutchinson, N., **Pannek, K.,** Pettitt, A., **Mccombe, P. A.,** & Henderson, R. D. (2010). Biomarkers of disease in a case of familial lower motor neuron ALS. *Amyotroph Lateral Scler.* , 11(5), 486-489.

**14.** Becherel, O. J., Jakob, B., Cherry, A. L., Gueven, N., Fusser, M., Kijas, A. W., Peng, C., Katyal, S., McKinnon, P. J., Chen, J., Epe, B., Smerdon, S. J., Taucher-Scholz, G., & **Lavin, M. F.** (2010). CK2 phosphorylation-dependent interaction between aprataxin and MDC1 in the DNA damage response. *Nucleic Acids Res.*, 38(5), 1489-1503.

**15.** Bennell, K. L., Hunt, M. A., Wrigley, T. V., Hunter, D. J., McManus, F. J., **Hodges, P. W.,** Li, L., & Hinman, R. S. (2010). Hip strengthening reduces symptoms but not knee load in people with medial knee osteoarthritis and varus malalignment: a randomised controlled trial. *Osteoarthritis and Cartilage*, 18(5), 621-628.

**16.** Bennett, N. C., **Gardiner, R. A.,** Hooper, J. D., Johnson, D. W., & Gobe, G. C. (2010). Molecular cell biology of androgen receptor signalling. *The International Journal of Biochemistry & Cell Biology*, 42(6), 813-827.

**17.** Biros, E., Cooper, M., Palmer, L. J., **Walker, P. J.**, Norman, P. E., & Golledge, J. (2010). Association of an allele on chromosome 9 and abdominal aortic aneurysm. *Atherosclerosis*, 212(2), 539-542.

**18.** **Björkman, S. T.**, Miller, S. M., **Rose, S. E.**, Burke, C., & **Colditz, P. B.** (2010). Seizures are associated with brain injury severity in a neonatal model of hypoxia-ischemia. *Neuroscience*, 166(1), 157-167.

**19.** Blanchard, M., Meneret, A., Moguelet, P., Brian, E., Baron, M., **Khosrotehrani, K.**, Bazelly, B., & Bachmeyer, C. (2010). Oral erosive lichen planus associated with Good syndrome. *Rev Med Interne*, 31(7), 498-501.

**20.** Bou-Gharios, G., Amin, F., Hill, P., Nakamura, H., Maxwell, P., & **Fisk, N. M.** (2010). Microchimeric Fetal Cells Are Recruited to Maternal Kidney following Injury and Activate Collagen Type I Transcription. *Cells Tissues Organs.*, *Epub Ahead of Print*.

**21.** Burke, C. R., Meier, S., McDougall, S., Compton, C., **Mitchell, M.**, & Roche, J. R. (2010). Relationships between endometritis and metabolic state during the transition period in pasture-grazed dairy cows. *Journal of Dairy Science*, 93(11), 5363-5373.

**22.** **Byrne, G.**, Pachana, N. A., Goncalves, D. C., Arnold, E., King, R., & Khoo, S. K. (2010). Psychometric properties and health correlates of the Geriatric Anxiety Inventory in Australian community-residing older women. *Aging and Mental Health* 14(3), 247-254.

**23.** **Byrne, G. J.**, & Pachana, N. A. (2010). Anxiety and depression in the elderly: do we know any more? *Current Opinion in Psychiatry*, 23(6), 504-509.

**24.** Calabria, B., Degenhardt, L., Briegleb, C., Vos, T., **Hall, W. D.**, Lynskey, M., Callaghan, B., Rana, U., & McLaren, J. (2010). Systematic review of prospective studies investigating "remission" from amphetamine, cannabis, cocaine or opioid dependence. *Addict Behav*, 35(8), 741-749.

**25.** Calabria, B., Degenhardt, L., **Hall, W. D.**, & Lynskey, M. (2010). Does cannabis use increase the risk of death? Systematic review of epidemiological evidence on adverse effects of cannabis use. *Drug and Alcohol Review*, 29(3), 318-330.

**26.** Calabria, B., Doran, C. M., Vos, T., Shakeshaft, A. P., & **Hall, W. D.** (2010). Epidemiology of alcohol-related burden of disease among Indigenous Australians. *Aust N Z J Public Health.*, 34(S1), 47-51.

**27.** Callaway, L. K., **Colditz, P. B.**, Byrne, N. M., **Lingwood, B. E.**, Rowlands, I. J., Foxcroft, K., & McIntyre, H. D. (2010). Prevention of Gestational Diabetes: Feasibility issues for an exercise intervention in obese pregnant women. *Diabetes Care*, 33(7), 1457.

**28.** Cannata, D. J., **Ireland, Z.**, Dickinson, H., Snow, R. J., Russell, A. P., West, J. M., & Walker, D. W. (2010). Maternal creatine supplementation from mid-pregnancy protects the diaphragm of the newborn spiny mouse from intrapartum hypoxia-induced damage. *Pediatr Res.*, 68(5), 393-398.

**29.** Carberry, A. E., **Colditz, P. B.**, & **Lingwood, B. E.** (2010). Body composition from birth to 4.5 months in infants born to non-obese women. *Pediatr Res.*, 68(1), 84-88.

**30.** **Carter, A.**, **Ambermoon, P.**, & **Hall, W. D.** (2010). Drug-Induced Impulse Control Disorders: A Prospectus for Neuroethical Analysis. *Neuroethics*, 1-12.

**31.** **Carter, A.**, Bell, E., Racine, E., & **Hall, W. D.** (2010). Ethical Issues Raised by Proposals to Treat Addiction Using Deep Brain Stimulation. *Neuroethics*, 1-14.

**32.** **Carter, A.**, & **Hall, W. D.** (2010a). Beyond the Right to Injectable Heroin. *AJOB Neuroscience*, 1(1), 48 - 49.

**33.** **Carter, A.**, & **Hall, W. D.** (2010b). The need for more explanatory humility in addiction neurobiology. *Addiction*, 105(5), 790-791.

**34.** **Carty, M. L.**, **Wixey, J. A.**, Kesby, J., **Reinebrant, H. E.**, **Colditz, P. B.**, Gobe, G. C., & **Buller, K. M.** (2010). Long-term losses of amygdala corticotropin-releasing factor neurons are associated with behavioural outcomes following neonatal hypoxia-ischemia. *Behavioural Brain Research*, 208(2), 609-618.

**35.** Challacombe, B., Weston, R., **Coughlin, G.**, Murphy, D., & Dasgupta, P. (2010). Live surgical demonstrations in urology: valuable educational tool or putting patients at risk? *BJU International*, 106(11), 1571–1574.

**36.** Chapman, A. R., **Hodges, P. W.**, Briggs, A. M., Stapley, P. J., & Vicenzino, B. (2010). Neuromuscular control and exercise-related leg pain in triathletes. *Med Sci Sports Exerc.*, 42(2), 233-243.

**37.** Chapman, A. R., Vicenzino, B., Blanch, P., Knox, J. J., & **Hodges, P. W.** (2010). Intramuscular fine-wire electromyography during cycling: repeatability, normalisation and a comparison to surface electromyography. *Journal of Electromyography And Kinesiology*, 20(1), 108-117.

**38.** Chikritzhs, T. N., Allsop, S. J., Moodie, A. R., & **Hall, W. D.** (2010). Per capita alcohol consumption in Australia: will the real trend please step forward? *Med J Aust.*, 193(10), 594-597.

**39.** Chipchase, L. S., Schabrun, S. M., & **Hodges, P. W.** (2010). Peripheral electrical stimulation to induce cortical plasticity: A systematic review of stimulus parameters. *Clinical Neurophysiology.*, 122(3), 456-463.

**40.** Clarke, R. A., Schirra, H. J., Catto, J. W., **Lavin, M. F.**, & **Gardiner, R. A.** (2010). Markers for Detection of Prostate Cancer. *Cancers*, 2(2), 1125-1154.

**41.** Clements, A. C., Magalhaes, R. J., Tatem, A. J., **Paterson, D. L.**, & Riley, T. V. (2010). Clostridium difficile PCR ribotype 027: assessing the risks of further worldwide spread. *Lancet Infect Dis.*, 10(6), 395-404.

**42.** Coelho, R. F., Chauhan, S., Orvieto, M. A., Sivaraman, A., Palmer, K. J., **Coughlin, G.**, & Patel, V. R. (2010). Influence of Modified Posterior Reconstruction of the Rhabdosphincter on Early Recovery of Continence and Anastomotic Leakage Rates after Robot-Assisted Radical Prostatectomy. *European Urology*, 59(1), 1.

**43.** Coelho, R. F., Palmer, K. J., Rocco, B., Moniz, R. R., Chauhan, S., Orvieto, M. A., **Coughlin, G.**, & Patel, V. R. (2010). Early complication rates in a single-surgeon series of 2500 robotic-assisted radical prostatectomies: report applying a standardized grading system. *European Urology*, 57(1), 945-952.

**44.** Cole, M. H., **Silburn, P. A.**, Wood, J. M., Worringham, C. J., & Kerr, G. K. (2010). Falls in Parkinson's disease: kinematic evidence for impaired head and trunk control. *Movement Disorders*, 25(14), 2369-2378.

**45.** Cretchley, J., Gallois, C., **Chenery, H. J.**, & Smith, A. (2010). Conversations between carers and people with schizophrenia: a qualitative analysis using leximancer. *Qual Health Res* 20(12), 1611-1628.

**46.** **Da Silva, L.**, & **Lakhani, S. R.** (2010). Pathology of hereditary breast cancer. *Mod Pathol*, 23(S2), S46-S51.

**47.** **Da Silva, L.**, **Simpson, P.**, **Smart, C.**, Cocciardi, S., Waddell, N., Lane, A., Morrison, B., **Vargas, A. C.**, Healey, S., Beesley, J., Pakkiri, P., Parry, S., Kurniawan, N., **Reid, L.**, **Keith, P.**, Faria, P., Pereira, E., Skalova, A., Bilous, M., Balleine, R., Do, H., Dobrovic, A., Fox, S., Franco, M., Reynolds, B., Khanna, K., **Cummings, M.**, Chenevix-Trench, G., & **Lakhani, S.** (2010). HER3 and downstream pathways are involved in colonization of brain metastases from breast cancer. *Breast Cancer Research*, 12(4), R46.

**48.** Dart, J. M., Jackson, C. L., **Chenery, H. J.**, Shaw, P. N., & Wilkinson, D. (2010). Meeting local complex health needs by building the capacity of general practice: the University of Queensland GP super clinic model. *Medical Journal of Australia*, 193(2), 86-89.

**49.** Davies, M. W., Dunster, K. R., Wilson, K., & **Colditz, P. B.** (2010). Effect of the dose volume of perfluorocarbon when starting partial liquid ventilation. *Journal of Paediatrics and Child Health*, 46(12), 714–722.

**50.** Dawson, A. P., Steele, E. J., **Hodges, P. W.**, & Stewart, S. (2010). Utility of the Oswestry Disability Index for studies of back pain related disability in nurses: evaluation of psychometric and measurement properties. *International Journal of Nursing Studies*, 47(5), 604-607.

**51.** De Silva, D., **Mitchell, M. D.**, & Keelan, J. A. (2010). Inhibition of choriodecidual cytokine production and inflammatory gene expression by selective I-kappaB kinase (IKK) inhibitors. *Br J Pharmacol.*, 160(7), 1808-1822.

**52.** Dellios, N. I., Lappas, M., Young, I. R., Palliser, H. K., Hirst, J. J., Oliva, K., Ayhan, M., & **Rice, G. E.** (2010). Increased expression of alpha-enolase in cervico-vaginal fluid during labour. *Eur J Obstet Gynecol Reprod Biol.*, 153(1), 16-22.

**53.** Dhanani, J., Roberts, J. A., Chew, M., Lipman, J., Boots, R. J., **Paterson, D. L.**, & Fraser, J. F. (2010). Antimicrobial chemotherapy and lung microdialysis: a review. *Int J Antimicrob Agents*, 36(6), 491-500.

**54.** Dimeski, G., Masci, P. P., Trabi, M., **Lavin, M. F.**, & de Jersey, J. (2010). Evaluation of the Becton-Dickinson rapid serum tube: does it provide a suitable alternative to lithium heparin plasma tubes? *Clin Chem Lab Med.*, 48(5), 651-657.

**55.** **Dissanayaka, N.**, Sellbach, A., Matheson, S., O'Sullivan, J. D., **Silburn, P. A.**, **Byrne, G. J.**, Marsh, R., & Mellick, G. D. (2010). Anxiety disorders in Parkinson's disease: prevalence and risk factors. *Movement Disorders*, 25(7), 838-845.

**56.** Doi, Y., **Paterson, D. L.**, Egea, P., Pascual, A., Lopez-Cerero, L., Navarro, M. D., Adams-Haduch, J. M., Qureshi, Z. A., **Sidjabat, H. E.**, & Rodriguez-Bano, J. (2010). Extended-spectrum and CMY-type beta-lactamase-producing Escherichia coli in clinical samples and retail meat from Pittsburgh, USA and Seville, Spain. *Clin Microbiol Infect.*, 16(1), 33-38.

**57.** Doidge, M., Allworth, A. M., Woods, M., Marshall, P., Terry, M., O'Brien, K., Goh, H. M., George, N., **Nimmo, G. R.**, Schembri, M. A., Lipman, J., & **Paterson, D. L.** (2010). Control of an outbreak of carbapenem-resistant Acinetobacter baumannii in Australia after introduction of environmental cleaning with a commercial oxidizing disinfectant. *Infect Control Hosp Epidemiol.*, 31(4), 418-420.

**58.** Doran, C. M., **Hall, W. D.**, Shakeshaft, A. P., Vos, T., & Cobiac, L. J. (2010). Alcohol policy reform in Australia: What can we learn from the evidence? *The Medical Journal of Australia*, 192(8), 468-470.

**59.** East, C. E., Leader, L. R., Sheehan, P., Henshall, N. E., & **Colditz, P. B.** (2010). Intrapartum fetal scalp lactate sampling for fetal assessment in the presence of a non-reassuring fetal heart rate trace. *Cochrane Database Syst Rev.* , 3, CD006174.



**60.** Edgell, T., Martin-Roussety, G., Barker, G., Autelitano, D. J., Allen, D., Grant, P., & **Rice, G. E.** (2010). Phase II biomarker trial of a multimarker diagnostic for ovarian cancer. *J Cancer Res Clin Oncol.*, 136(7), 1079-1088.

**61.** Edgell, T. A., Barraclough, D. L., Rajic, A., Dhulia, J., Lewis, K. J., Armes, J. E., Barraclough, R., Rudland, P. S., **Rice, G. E.**, & Autelitano, D. J. (2010). Increased plasma concentrations of anterior gradient 2 protein are positively associated with ovarian cancer. *Clin Sci (Lond)* . , 118(12), 717-725.

**62.** Endimiani, A., Doi, Y., Bethel, C. R., Taracila, M., Adams-Haduch, J. M., O'Keefe, A., Hujer, A. M., **Paterson, D. L.**, Skalweit, M. J., Page, M. G. P., Drawz, S. M., & Bonomo, R. A. (2010). Enhancing Resistance to Cephalosporins in Class C  $\beta$ -Lactamases: Impact of Gly214Glu in CMY-2. *Biochemistry*, 49(5), 1014-1023.

**63.** Fang, Z., S., K., McKay, M. J., Woods, R., Birrell, G., Sprung, C. N., Murrell, D. F., Wangoo, K., **Teng, L.**, Kearsley, J. H., **Lavin, M. F.**, Graham, P. H., & Clarke, R. A. (2010). Low levels of ATM in breast cancer patients with clinical radiosensitivity. *Genome Integr.*, 1(1), 9.

**64.** **Farah, C. S.**, Lynch, N., & McCullough, M. J. (2010). Oral fungal infections: an update for the general practitioner. *Aust Dent J.*, 55(s1), 48-52.

**65.** Ferguson, B., Konrad Muller, H., Handoko, H. Y., **Khosrotehrani, K.**, Beermann, F., Hacker, E., Soyer, H. P., Bosenberg, M., & Walker, G. J. (2010). Differential roles of the pRb and Arf/p53 pathways in murine naevus and melanoma genesis. *Pigment Cell & Melanoma Research*, 23(6), 771-780.

**66.** Ferguson, C. D., Clancy, P., Bourke, B., **Walker, P. J.**, Dear, A., Buckenham, T., Norman, P., & Golledge, J. (2010). Association of statin prescription with small abdominal aortic aneurysm progression. *American Heart Journal*, 159(2), 307-313.

**67.** Ferreira, P. H., Ferreira, M. L., Maher, C. G., Refshauge, K., Herbert, R. D., & **Hodges, P. W.** (2010). Changes in recruitment of transversus abdominis correlate with disability in people with chronic low back pain. *Br J Sports Med.*, 44(16), 1166-1172.

**68.** **Finnigan, S.**, O'Connell, R. G., & Robertson, I. H. (2010). ERP measures indicate both attention and working memory encoding decrements in aging. . *Psychophysiology*, Epub ahead of print.

**69.** Flanagan, J. M., Cocciardi, S., Waddell, N., Johnstone, C. N., Marsh, A., Henderson, S., **Simpson, P.**, **da Silva, L.**, Khanna, K., **Lakhani, S.**, Boshoff, C., & Chenevix-Trench, G. (2010). DNA Methylome of Familial Breast Cancer Identifies Distinct Profiles Defined by Mutation Status. *The American Journal of Human Genetics*, 86(3), 420-433.

**70.** Freeman, B., **Gartner, C.**, **Hall, W. D.**, & Chapman, S. (2010). Forecasting future tobacco control policy: Where to next? *Aust N Z J Public Health.*, 34(5), 447-450.

**71.** **Gartner, C.**, & **Hall, W. D.** (2010). Harm reduction policies for tobacco users. *Int J Drug Policy*, 21(2), 129-130.

**72.** **Gartner, C. E.**, Chapman, S. F., **Hall, W. D.**, & Wakefield, M. A. (2010). Why we need tobacco sales data for good tobacco control. *Med J Aust.*, 192(1), 3-4.

**73.** **Gartner, C. E.**, & **Hall, W. D.** (2010). Smokeless tobacco products: Unrecognised regulatory and policy opportunities. *Drug Alcohol Rev.*, 29(2), 119-120.

**74.** **Gartner, C. E.**, Jimenez-Soto, E. V., Borland, R., O'Connor, R. J., & **Hall, W. D.** (2010). Are Australian smokers interested in using low-nitrosamine smokeless tobacco for harm reduction? *Tob Control*, 19(6), 451-456.

**75.** Gibson, J. S., Cobbold, R. N., Heisig, P., **Sidjabat, H. E.**, Kyaw-Tanner, M. T., & Trott, D. J. (2010). Identification of Qnr and AAC(6')-1b-cr plasmid-mediated fluoroquinolone resistance determinants in multidrug-resistant Enterobacter spp. isolated from extraintestinal infections in companion animals. *Vet Microbiol.*, 143(2-4), 329-336.

**76.** Gluckman, P. D., Hanson, M. A., & **Mitchell, M. D.** (2010). Developmental origins of health and disease: reducing the burden of chronic disease in the next generation. *Genome Med.*, 2(2), 14.

**77.** Golledge, J., Clancy, P., Moran, C., Biros, E., Rush, C., **Walker, P. J.**, & Norman, P. (2010). The novel association of the chemokine CCL22 with abdominal aortic aneurysm. *American Journal of Pathology*, 176(5), 2098-2106.

**78.** Gotherstrom, C., Chan, J., O'Donoghue, K., & **Fisk, N. M.** (2010). Identification of candidate surface antigens for non-invasive prenatal diagnosis by comparative global gene expression on human fetal mesenchymal stem cells. *Mol Hum Reprod.* , 16(7), 472- 480.

**79.** Guo, Z., Kozlov, S., **Lavin, M. F.**, Person, M. D., & Paull, T. T. (2010). ATM Activation by Oxidative Stress. *Science*, 330(6003), 517-521.

**80.** Guzzetta, A., D'Acunto, G., **Rose, S.**, Tinelli, F., Boyd, R., & Cioni, G. (2010). Plasticity of the visual system after early brain damage. *Dev Med Child Neurol.*, 52(10), 891-900.

**81.** Hall, L. M., Brauer, S., Horak, F., & **Hodges, P. W.** (2010). Adaptive changes in anticipatory postural adjustments with novel and familiar postural supports. *J Neurophysiol*, 103(2), 968-976.

**82.** **Hall, W. D.** (2010). Does a lack of specificity rule out a causal relationship between cannabis use and schizophrenia? *Addiction Research & Theory*, 18(6), 606-608.

**83.** **Hall, W. D.** (2010a). What are the policy lessons of National Alcohol Prohibition in the United States, 1920-1933? *Addiction*, 105(7), 1164-1173.

**84.** **Hall, W. D.** (2010b). What would evidence-informed drug policies look like? *Addiction*, 105(7), 1135-1136.

**85.** **Hall, W. D.**, & Chikritzhs, T. (2010). The Australian alcopops tax revisited. *The Lancet*, Epub ahead of Print.

**86.** **Hall, W. D.**, & Degenhardt, L. (2010a). Adverse health effects of non-medical cannabis use ? Authors' reply. *The Lancet*, 375(9710), 197.

**87.** **Hall, W. D.**, & Degenhardt, L. (2010b). What are the policy implications of the evidence on cannabis use and psychosis? *Addiction*, 105(8), 1332-1333.

**88.** **Hall, W. D.**, & **Lucke, J. C.** (2010). Legally coerced treatment for drug using offenders: ethical and policy issues. *Crime and Justice Bulletin*, 144(9), 12.

**89.** **Hall, W. D.**, & **Lucke, J. C.** (2010). The enhancement use of neuropharmaceuticals: more scepticism and caution needed. *Addiction*, 105(12), 2041-2043.

**90.** **Hall, W. D.**, **Mathews, R.**, & Morley, K. I. (2010). Being more realistic about the public health impact of genomic medicine. *PLoS Med*, 7(10), e1000347.

**91.** **Hall, W. D.**, Wallace, A. L., Cobiac, L. J., Doran, C. M., & Vos, T. (2010). How can we reduce alcohol-related road crash deaths among young Australians? *Med J Aust.* , 193(3), 560.

**92.** Halton, K. A., Cook, D., **Paterson, D. L.**, Safdar, N., & Graves, N. (2010). Cost-Effectiveness of a Central Venous Catheter Care Bundle. *PLoS One*, 5(9), e12815.

**93.** Han, K., Capitano, B., Bies, R., Potoski, B. A., Husain, S., Gilbert, S., **Paterson, D. L.**, McCurry, K., & Venkataramanan, R. (2010). Bioavailability and population pharmacokinetics of voriconazole in lung transplant recipients. *Antimicrobial Agents and Chemotherapy*, 54(10), 4424-4431.

**94.** Hayashi, Y., Roberts, J. A., **Paterson, D. L.**, & Lipman, J. (2010). Pharmacokinetic evaluation of piperacillin-tazobactam. *Expert Opinion on Drug Metabolism & Toxicology*, 6(8), 1017-1031.

**95.** Heng, Y. J., Di Quinzio, M. K. W., Permezel, M., Ayhan, M., **Rice, G. E.**, & Georgiou, H. M. (2010). Temporal proteomic analysis of human cervicovaginal fluid with impending term labor. *J Proteome Res.*, 9(3), 1344-1350.

**96.** Heng, Y. J., Di Quinzio, M. K. W., Permezel, M., **Rice, G. E.**, & Georgiou, H. M. (2010). Temporal expression of antioxidants in human cervicovaginal fluid associated with spontaneous labor. *Antioxid Redox Signal.* , 13(7), 951-957.

**97.** **Herbert, D.**, **Lucke, J. C.**, & Dobson, A. J. (2010). Depression: an emotional obstacle to seeking medical advice for infertility. *Fertil Steril.*, 94(5), 1817-1821.

**98.** **Herbert, D. L.**, **Lucke, J. C.**, & Dobson, A. J. (2010). Early users of fertility treatment with hormones and IVF: Women who live in major cities and have private health insurance. *Aust N Z J Public Health.*, 34(6), 629-634.

**99.** **Herbert, D. L.**, **Lucke, J. C.**, & Dobson, A. J. (2010). History behind the egg: Women's comprehensive histories and IVF outcomes, Australia 2008-2009 *Am J Epidemiol.* , 171(S11), S28.

**100.** Ho, J., Tambyah, P. A., & **Paterson, D. L.** (2010). Multiresistant Gram-negative infections: a global perspective. *Current Opinion in Infectious Diseases*, 23(6), 546-553.

**101.** Hoenig, M. R., **Walker, P. J.**, Gurnsey, C., Beadle, K., & Johnson, L. (2010). Markers of cholesterol absorption and synthesis predict the low-density lipoprotein cholesterol response to atorvastatin. *Cardiovascular Pharmacology*, 56(4), 396-401.

**102.** Holcombe, D. J., Gole, G. A., & **Barnett, N. L.** (2010). The calcineurin inhibitor, FK506, does not alter glutamate transport in the ischaemic mouse retina. *Experimental Eye Research*, 91(2), 315-319.

**103.** Holdsworth-Carson, S. J., Lim, R., Mitton, A., Whitehead, C., **Rice, G. E.**, Permezel, M., & Lappas, M. (2010). Peroxisome proliferator-activated receptors are altered in pathologies of the human placenta: Gestational diabetes mellitus, intrauterine growth restriction and preeclampsia. *Placenta*, 31(3), 222-229.

**104.** Hollingworth, S. A., Siskind, D. J., Nissen, L. M., Robinson, M., & **Hall, W. D.** (2010). Patterns of antipsychotic medication use in Australia 2002-2007. *Aust N Z J Psychiatry.*, 44(4), 372-377.

- 105. Holmes, A. D., Chenery, H. J., & Copland, D. A.** (2010). Nicotine does not enhance basic semantic priming. *Psychopharmacology (Berl)*. , 211(3), 259-265.
- 106.** Hsueh, P. R., Badal, R. E., Hawser, S. P., Hoban, D. J., Bouchillon, S. K., Ni, Y., & **Paterson, D. L.** (2010). Epidemiology and antimicrobial susceptibility profiles of aerobic and facultative Gram-negative bacilli isolated from patients with intra-abdominal infections in the Asia-Pacific region: 2008 results from SMART (Study for Monitoring Antimicrobial Resistance Trends). *Int J Antimicrob Agents.*, 36(5), 408-414.
- 107.** Hu, H., Meijer, O. G., van Dieen, J. H., **Hodges, P. W.**, Bruijn, S. M., Strijers, R. L., Nanayakkara, P. W., van Royen, B. J., Wu, W. H., & Xia, C. (2010). Is the psoas a hip flexor in the active straight leg raise? *Eur Spine J., Epub ahead of Print*.
- 108.** Huang, K. T., Dobrovic, A., Yan, M., Karim, R. Z., Lee, C. S., **Lakhani, S. R.**, & Fox, S. B. (2010). DNA methylation profiling of phyllodes and fibroadenoma tumours of the breast. *Breast Cancer Res Treat.*, 124(2), 555-565.
- 109. Ireland, P. J.,** Johnson, S., Donaghey, S., Johnston, L., McGill, J., **Zankl, A.**, Ware, R. S., Pacey, V., Ault, J., Savarirayan, R., Sillence, D., Thompson, E., & Townshend, S. (2010). Developmental milestones in infants and young Australasian children with achondroplasia. *J Dev Behav Pediatr.*, 31(1), 41-47.
- 110.** Iwasenko, J. M., Cretikos, M., **Paterson, D. L.**, Gibb, R., Webb, S. A., Smith, D. W., Blyth, C. C., Dwyer, D. E., Shi, J. Q., Robertson, P., & Rawlinson, W. D. (2010). Enhanced diagnosis of pandemic (H1N1) 2009 influenza infection using molecular and serological testing in intensive care unit patients with suspected influenza. *Clin Infect Dis.* , 51(1), 70-72. Iannicelli ,M., Brancati, F., Mougou-Zerelli, S., Mazzotta, A., Thomas, S., Elkhartoufi, N., Travaglini, L., Gomes, C., Ardissino, G.L., Bertini, E., Boltshauser, E., Castorina, P., D'Arrigo, S., Fischetto, R., Leroy, B., Loget, P., Bonnière, M., Starck, L., Tantau, J., Gentilin, B., Majore, S., Swistun, D., Flori, E., Lalatta, F., Pantaleoni, C., Penzien, J., Grammatico, P., International JSRD Study Group (incl. **Zankl, A.**), Dallapiccola, B., Gleeson, J.G, Attie-Bitach, T., Valente, E. M. (2010). Novel TMEM67 mutations and genotype-phenotype correlates in meckelin-related ciliopathies. *Hum Mutat.* 31 (5), E1319-31.
- 111.** Johnson, H. J., Han, K., Capitano, B., Blisard, D., Husain, S., Linden, P. K., Marcos, A., Kwak, E. J., Potoski, B., **Paterson, D. L.**, Romkes, M., & Venkataramanan, R. (2010). Voriconazole pharmacokinetics in liver transplant recipients. *Antimicrob Agents Chemother.* , 54(2), 852-859.
- 112.** Jurado, S., Smyth, I., van Denderen, B., Tennis, N., Hammet, A., Hewitt, K., Ng, J. L., McNees, C. J., Kozlov, S. V., Oka, H., Kobayashi, M., Conlan, L. A., Cole, T. J., Yamamoto, K. I., Taniguchi, Y., Takeda, S., **Lavin, M. F.**, & Heierhorst, J. (2010). Dual functions of ASCIZ in the DNA base damage response and pulmonary organogenesis. *PLoS Genet.*, 6(10), e1001170.
- 113.** Kanjhan, R., **Pow, D. V.**, Noakes, P. G., & Bellingham, M. C. (2010). The two-pore domain K+ channel TASK-1 is closely associated with brain barriers and meninges. *J Mol Histol.*, 41(6), 315-323.
- 114.** Kerr, G. K., Worringham, C. J., Cole, M. H., Lacherez, P. F., Wood, J. M., & **Silburn, P. A.** (2010). Predictors of future falls in Parkinson disease. *Movement Disorders*, 25(14), 2369-2378.
- 115.** Kim, T. S., Kawaguchi, M., Suzuki, M., Jung, C. G., Asai, K., Shibamoto, Y., **Lavin, M. F.**, Khanna, K. K., & Miura, Y. (2010). The ZFX3 (ATBF1) transcription factor induces PDGFRB, which activates ATM in the cytoplasm to protect cerebellar neurons from oxidative stress. *Dis Model Mech.*, 3(11-12), 752-762.
- 116.** Krauland, M., Harrison, L., **Paterson, D. L.**, & Marsh, J. (2010). Novel integron gene cassette arrays identified in a global collection of multi-drug resistant non-typhoidal Salmonella enterica. *Curr Microbiol.*, 60(3), 217-223.
- 117.** Kruger, A. J., **Walker, P. J.**, Foster, W. J., Jenkins, J. S., Boyne, N. S., & Jenkins, J. (2010). Important observations made managing carotid body tumors during a 25-year experience. *Journal of Vascular Surgery*, 52(6), 1518-1523.
- 118.** Kruger, R., Sharma, M., Riess, O., Gasser, T., Van Broeckhoven, C., Theuns, J., Aasly, J., Annesi, G., Bentivoglio, A. R., Brice, A., Djarmati, A., Elbaz, A., Farrer, M., Ferrarese, C., Gibson, J. M., Hadjigeorgiou, G. M., Hattori, N., Ioannidis, J. P., Jasinska-Myga, B., Klein, C., Lambert, J. C., Lesage, S., Lin, J. J., Lynch, T., Mellick, G. D., de Nigris, F., Opala, G., Prigione, A., Quattrone, A., Ross, O. A., Satake, W., **Silburn, P. A.**, Tan, E. K., Toda, T., Tomiyama, H., Wirdefeldt, K., Wszolek, Z., Xiomerisiou, G., & Maraganore, D. M. (2010). A large-scale genetic association study to evaluate the contribution of Omi/HtrA2 (PARK13) to Parkinson's disease. *Neurobiol Aging, e-Pub ahead of Print*.
- 119.** Kumarasamy, K. K., Toleman, M. A., Walsh, T. R., Bagaria, J., Butt, F., Balakrishnan, R., Chaudhary, U., Doumith, M., Giske, C. G., Irfan, S., Krishnan, P., Kumar, A. V., Maharjan, S., Mushtaq, S., Noorie, T., **Paterson, D. L.**, Pearson, A., Perry, C., Pike, R., Rao, B., Ray, U., Sarma, J. B., Sharma, M., Sheridan, E., Thirunarayan, M. A., Turton, J., Upadhyay, S., Warner, M., Welfare, W., Livermore, D. M., & Woodford, N. (2010). Emergence of a new antibiotic resistance mechanism in India, Pakistan, and the UK: a molecular, biological, and epidemiological study. *The Lancet Infectious Diseases*, 10(9), 597-602.
- 120. Lakhani, S.**, Khanna, K., & Chenevix-Trench, G. (2010). Are estrogen receptor-positive breast cancers in BRCA1 mutation carriers sporadic? *Breast Cancer Research*, 12(2), 104.
- 121.** Leduc, M., Guegan, S., Roy, E., Oster, M., Aractingi, S., & **Khosrotehrani, K.** (2010). Limited functional capacity of microchimeric fetal hematopoietic progenitors acquired by mothers during pregnancy. *Experimental Hematology*, 38(10), 852-853.
- 122. Lee, A., Lingwood, B. E., Bjorkman, S. T., Miller, S. M.**, Poronnik, P., **Barnett, N. L., Colditz, P. B., & Pow, D. V.** (2010). Rapid loss of glutamine synthetase from astrocytes in response to hypoxia: Implications for excitotoxicity. *Journal of Chemical Neuroanatomy*, 39(3), 211-220.
- 123. Lee, A., & Pow, D. V.** (2010). Astrocytes: Glutamate transport and alternate splicing of transporters. *Int J Biochem Cell Biol.*, 42(12), 1901-1906.
- 124. Lee, E. S., Bou-Gharios, G., Seppanen, E., Khosrotehrani, K., & Fisk, N. M.** (2010). Fetal stem cell microchimerism: natural-born healers or killers? *Molecular Human Reproduction*, 16(11), 869-878.
- 125.** Lee, L. J., Chang, A. T., Coppieters, M. W., & **Hodges, P. W.** (2010). Changes in sitting posture induce multiplanar changes in chest wall shape and motion with breathing. *Respiratory Physiology and Neurobiology*, 170(3), 236-245.
- 126.** Liberman, J., O'Brien, M., **Hall, W. D.**, & Hill, D. (2010). Ending inequities in access to effective pain relief? *Lancet*, 376(9744), 856-857.
- 127.** Lickliter, J. D., Francesconi, A. B., Smith, G., Burge, M., Coulthard, A., **Rose, S.**, Griffin, M., Milne, R., McCarron, J., Yeadon, T., Wilks, A., Cubitt, A., Wyld, D. K., & Vasey, P. A. (2010). Phase I trial of CYT997, a novel cytotoxic and vascular-disrupting agent. *Br J Cancer*, 103(5), 597-606.
- 128. Lucke, J. C.** (2010). In That Case. *Journal of Bioethical Inquiry*, 7(3), 337-338.
- 129. Lucke, J. C., Bell, S., Partridge, B., & Hall, W. D.** (2010). Weak evidence for large claims contribute to the phantom debate. *BioSocieties*, 5(4), 482-483.
- 130. Lucke, J. C.**, Brown, W., Tooth, L., Loxton, D., Byles, J., Spallek, M., Powers, J., Hockey, R., Pachana, N. A., & Dobson, A. (2010). Health across generations: findings from the Australian Longitudinal Study on Women's Health. *Biol Res Nurs.*, 12(2), 162-170.
- 131. Lucke, J. C., & Hall, W. D.** (2010). Begging the Question: Presupposing That TMS Can Be Shown to Enhance Eyewitness Testimony. *AJOB Neuroscience*, 1(3), 34-35.
- 132. Lucke, J. C., Herbert, D., Partridge, B., & Hall, W. D.** (2010). Anticipating the use of life extension technologies. *EMBO Rep*, 11(5), 334-338.
- 133.** MacDonald, D., Moseley, G. L., & **Hodges, P. W.** (2010). People with recurrent low back pain respond differently to trunk loading despite remission from symptoms. *Spine* 35(7), 818-824.
- 134.** MacDonald, K. P., Palmer, J. S., Cronau, S., **Seppanen, E.**, Olver, S., Raffelt, N. C., Kuns, R., **Pettit, A. R.**, Clouston, A., Wainwright, B., Branstetter, D., Smith, J., Paxton, R. J., Cerretti, D. P., Bonham, L., Hill, G. R., & Hume, D. A. (2010). An antibody against the colony-stimulating factor 1 receptor depletes the resident subset of monocytes and tissue- and tumor-associated macrophages but does not inhibit inflammation. *Blood*, 116(19), 3955-3963.
- 135.** Macdonald, S., **Hall, W. D.**, Roman, P., Stockwell, T., Coghlan, M., & Nesvaag, S. (2010). Testing for cannabis in the work-place: a review of the evidence. *Addiction*, 105(3), 408-416.
- 136.** Makrides, M., Gibson, R. A., McPhee, A. J., Yelland, L., Quinlivan, J., Ryan, P., & **DOMInO Investigative Team (Colditz P.B.** D.I. member) (2010). Effect of DHA supplementation during pregnancy on maternal depression and neurodevelopment of young children: a randomized controlled trial. *JAMA*, 304(15), 1675-1683.
- 137.** Maller, J. J., Thomson, R. H. S., Lewis, P. M., **Rose, S. E., Pannek, K.**, & Fitzgerald, P. B. (2010). Traumatic brain injury, major depression, and diffusion tensor imaging: making connections. *Brain Res Rev.*, 64(1), 213-240.
- 138.** Markey, K. A., Burman, A. C., Banovic, T., Kuns, R. D., Raffelt, N. C., Rowe, V., Olver, S. D., Don, A. L. J., Morris, E. S., **Pettit, A. R.**, Wilson, Y. A., Robb, R. J., Randall, L. M., Korner, H., Engwerda, C. R., Clouston, A. D., Macdonald, K. P. A., & Hill, G. R. (2010). Soluble lymphotoxin is an important effector molecule in GVHD and GVL. *Blood*, 115(1), 122-132.
- 139. Mathews, R., Hall, W. D., & Gartner, C. E.** (2010). Is there evidence of 'hardening' among Australian smokers between 1997 and 2007? Analyses of the Australian National Surveys of Mental Health and Well-Being. *Aust N Z J Psychiatry.* , 44(12), 1132-1136.



- 140.** Matigian, N., Abrahamsen, G., Sutharsan, R., Cook, A. L., Vitale, A. M., Nouwens, A., Bellette, B., An, J., Anderson, M., Beckhouse, A. G., Bennebroek, M., Cecil, R., Chalk, A. M., Cochrane, J., Fan, Y., Feron, F., McCurdy, R., McGrath, J. J., Murrell, W., Perry, C., Raju, J., Ravishankar, S., **Silburn, P. A.**, Sutherland, G. T., Mahler, S., Mellick, G. D., Wood, S. A., Sue, C. M., Wells, C. A., & Mackay-Sim, A. (2010). Disease-specific, neurosphere-derived cells as models for brain disorders. *Disease Models and Mechanisms*, 3(11-12), 785-789.
- 141.** Mavaddat, N., Rebbeck, T., **Lakhani, S.**, Easton, D., & Antoniou, A. (2010). Incorporating tumour pathology information into breast cancer risk prediction algorithms. *Breast Cancer Research*, 12(3), R28.
- 142.** **McCombe, P. A., & Csurhes, P. A.** (2010). T cells from patients with Guillain-Barré syndrome produce interferon-gamma in response to stimulation with the ganglioside GM1. *Journal of Clinical Neuroscience*, 17(4), 537-538.
- 143.** McCullough, M. J., Prasad, G., & **Farah, C. S.** (2010). Oral mucosal malignancy and potentially malignant lesions: an update on the epidemiology, risk factors, diagnosis and management. *Aust Dent J.*, 5(S1), 61-65.
- 144.** McLaren, J. A., Silins, E., Hutchinson, D., Mattick, R. P., & **Hall, W. D.** (2010). Assessing evidence for a causal link between cannabis and psychosis: a review of cohort studies. *The International Journal of Drug Policy*, 21(1), 10-19.
- 145.** Miller, P., **Hall, W. D.**, West, R., Marsden, J., & Darke, S. (2010). A renewed call for action on alcohol policy. *Addiction*, 105(5), 767-768.
- 146.** Morganstein, D. L., Wu, P., Mane, M. R., **Fisk, N. M.**, White, R., & Parker, M. G. (2010). Human fetal mesenchymal stem cells differentiate into brown and white adipocytes: a role for ERR[alpha] in human UCP1 expression. *Cell Res*, 20(4), 434-444.
- 147.** Morrow, B. J., Keddle, D. J., Gueven, N., **Lavin, M. F.**, & Bottle, S. E. (2010). A novel profluorescent nitroxide as a sensitive probe for the cellular redox environment. *Free Radic Biol Med.*, 49(1), 67-76.
- 148.** Moxon, J. V., Parr, A., Emeto, T. I., **Walker, P. J.**, Norman, P. E., & Golledge, J. (2010). Diagnosis and monitoring of abdominal aortic aneurysm: current status and future prospects. *Current Problems in Cardiology*, 35(10), 512-548.
- 149.** Munro, S. K., Farquhar, C. M., **Mitchell, M. D.**, & Ponnampalam, A. P. (2010). Epigenetic regulation of endometrium during the menstrual cycle. *Molecular Human Reproduction*, 16(5), 297-310.
- 150.** **Nguyen, K. T.**, Buljan, V., Else, P. L., **Pow, D. V.**, & Balcar, V. J. (2010). Cardiac glycosides ouabain and digoxin interfere with the regulation of glutamate transporter GLAST in astrocytes cultured from neonatal rat brain. *Neurochem Res.*, 35(12), 2062-2069.
- 151.** **Nimmo, G. R.**, Schooneveldt, J. M., Sutherland, J. L., Power, S., Olesen, D., Selvey, C., Beard, F., Jones, M., & **Paterson, D. L.** (2010). Epidemiology of non-multiresistant methicillin-resistant Staphylococcus aureus infection in Queensland, Australia: associations with indigenous populations and Panton-Valentine leukocidin. *Eur J Clin Microbiol Infect Dis.*, 29(10), 1253-1259.
- 152.** **O'Toole, J. M., Mesbah, M., & Boashash, B.** (2010a). Accurate and efficient implementation of the time-frequency matched filter. *Signal Processing, IET*, 4(4), 428-437.
- 153.** **O'Toole, J. M., Mesbah, M., & Boashash, B.** (2010b). Improved Discrete Definition of Quadratic Time-Frequency Distributions. *Signal Processing, IEEE Transactions on*, 58(2), 906-911.
- 154.** Pandey, V., Jung, Y., Kang, J., Steiner, M., Qian, P., Banerjee, A., **Mitchell, M. D.**, Wu, Z., Zhu, T., Liu, D., & Lobie, P. E. (2010). Artemin Reduces Sensitivity to Doxorubicin and Paclitaxel in Endometrial Carcinoma Cells through Specific Regulation of CD24. *Transl Oncol.*, 3(4), 218-229.
- 155.** Pandey, V., Qian, P., Kang, J., Perry, J. K., **Mitchell, M. D.**, Yin, Z., Wu, Z., Liu, D., Zhu, T., & Lobie, P. E. (2010). Artemin stimulates oncogenicity and invasiveness of human endometrial carcinoma cells. *Endocrinology*, 151(3), 909-920.
- 156.** **Pannek, K.**, Mathias, J. L., Bigler, E. D., Brown, G., Taylor, J. D., & **Rose, S.** (2010). An automated strategy for the delineation and parcellation of commissural pathways suitable for clinical populations utilising high angular resolution diffusion imaging tractography. *Neuroimage.*, 50(31044-1053).
- 157.** **Pannek, K.**, Mathias, J. L., Bigler, E. D., Brown, G., Taylor, J. D., & **Rose, S. E.** (2010). The average pathlength map: A diffusion MRI tractography-derived index for studying brain pathology. *Neuroimage.*, *Epub ahead of Print*.
- 158.** **Partridge, B., Lucke, J. C., & Hall, W. D.** (2010). Listening to public concerns about human life extension: The public view of life-extension technologies is more nuanced than expected and researchers must engage in discussions if they hope to promote awareness and acceptance. *EMBO Rep*, 11(10), 735-737.
- 159.** Patel, V. R., Coelho, R. F., Chauhan, S., Orvieto, M. A., Palmer, K. J., Rocco, B., Sivaraman, A., & **Coughlin, G.** (2010). Continence, potency and oncological outcomes after robotic-assisted radical prostatectomy: early trifecta results of a high-volume surgeon. *BJU Int.*, 106(5), 696-702.

- 160.** **Paterson, D. L., & Rogers, B. A.** (2010). How Soon Is Now? The Urgent Need for Randomized, Controlled Trials Evaluating Treatment of Multidrug-Resistant Bacterial Infection. *Clinical Infectious Diseases*, 51(11), 1245-1247.
- 161.** **Peiris, H. N.**, Ponnampalam, A. P., **Mitchell, M. D.**, & Green, M. P. (2010). Brief Communication: Sexual dimorphic expression of myostatin and follistatin like-3 in a rat trans-generational under-nutrition model. *Nutr Metab*, 7(44), 1-6.
- 162.** **Peiris, H. N.**, Ponnampalam, A. P., Osepchook, C. C., **Mitchell, M. D.**, & Green, M. P. (2010). Placental expression of myostatin and follistatin-like-3 protein in a model of developmental programming. *Am J Physiol Endocrinol Metab.* *Am J Physiol Endocrinol Metab.*, 298(4), 854-861.
- 163.** Pham, B. N., Rao, C., Adair, T., Hill, P. S., & **Hall, W. D.** (2010). Assessing The Quality of Data for Analysing The Sex Ratio at Birth in Viet Nam. *Asian Population Studies*, 6(3), 263 - 287.
- 164.** Playford, E. G., **Nimmo, G. R.**, Tilse, M., & Sorrell, T. C. (2010). Increasing incidence of candidaemia: long-term epidemiological trends, Queensland, Australia, 1999-2008. *Journal of Hospital Infection*, 76(1), 46-51.
- 165.** **Raggatt, L. J.**, & Partridge, N. C. (2010). Cellular and molecular mechanisms of bone remodeling. *Journal of Biological Chemistry*, 285(33), 25103-25108.
- 166.** **Reinebrant, H. E., Wixey, J. A.**, Gobe, G. C., **Colditz, P. B.**, & **Buller, K. M.** (2010). Differential effects of neonatal hypoxic-ischemic brain injury on brainstem serotonergic raphe nuclei. *Brain Research*, 1322, 124-133.
- 167.** **Rice, G. E.**, Edgell, T. A., & Autelitano, D. J. (2010). Evaluation of midkine and anterior gradient 2 in a multimarker panel for the detection of ovarian cancer. *J Exp Clin Cancer Res.*, 29, 62.
- 168.** Roberts, J. A., Ulldemolins, M., Roberts, M. S., McWhinney, B., Ungerer, J., **Paterson, D. L.**, & Lipman, J. (2010). Therapeutic drug monitoring of beta-lactams in critically ill patients: proof of concept. *Int J Antimicrob Agents.*, 36(4), 332-329.
- 169.** Robins, W. T. B., Larsson, M. U., Luszcz, M. A., & **Byrne, G. J.** (2010). WAIS-R features of preclinical Huntington's disease: implications for early detection. *Dementia and Geriatric Cognitive Disorders*, 29(4), 342-350.
- 170.** **Rodero, M. P., & Khosrotehrani, K.** (2010). Skin wound healing modulation by macrophages. *Int J Clin Exp Pathol.*, 3(7), 643-653.
- 171.** Roxburgh, A., **Hall, W. D.**, Degenhardt, L., McLaren, J., Black, E., Copeland, J., & Mattick, R. P. (2010). The epidemiology of cannabis use and cannabis-related harm in Australia 1993-2007. *Addiction*, 105(6), 1071-1079.
- 172.** Runnegar, N., **Sidjabat, H. E.**, Goh, H. M. S., **Nimmo, G. R.**, Schembri, M. A., & **Paterson, D. L.** (2010). Molecular epidemiology of multidrug-resistant Acinetobacter baumannii in a single institution over a 10-year period. *J Clin Microbiol.* , 48(11), 4051-4056.
- 173.** Ryan, J., Woodyatt, G., & **Copland, D. A.** (2010). Procedural discourse in intellectual disability and dual diagnosis. *Journal of Intellectual Disability Research*, 54, 70-80.
- 174.** Sarris, J., Kavanagh, D. J., & Byrne, G. (2010). Adjuvant use of nutritional and herbal medicines with antidepressants, mood stabilizers and benzodiazepines. *Journal of Psychiatric Research*, 44(1), 32-41.
- 175.** Sarris, J., Robins Wahlin, T. B., Goncalves, D. C., & **Byrne, G. J.** (2010). Comparative use of complementary medicine, allied health, and manual therapies by middle-aged and older Australian women. *Journal of Health Psychology*, 22(4), 273-282.
- 176.** **Saunus, J. M.**, Wagner, S. A., Matias, M. A., Hu, Y., Zaini, Z. M., & **Farah, C. S.** (2010). Early activation of the interleukin-23-17 axis in a murine model of oropharyngeal candidiasis. *Mol Oral Microbiol.*, 25(5), 343-356.
- 177.** Schlebusch, S., Price, G. R., Hinds, S., Nourse, C., Schooneveldt, J. M., Tilse, M. H., Liley, H. G., Wallis, T., Bowling, F., Venter, D., & **Nimmo, G. R.** (2010). First outbreak of PVL-positive nonmultiresistant MRSA in a neonatal ICU in Australia: comparison of MALDI-TOF and SNP-plus-binary gene typing. *European Journal of Clinical Microbiology & Infectious Disease*, 29(10), 1311-1314.
- 178.** **Sidjabat, H. E.**, Derrington, P., **Nimmo, G. R.**, & **Paterson, D. L.** (2010). Escherichia coli ST131 producing CTX-M-15 in Australia. *J Antimicrob Chemother.*, 65(6), 1301-1303.
- 179.** **Simpson, P. T.**, Reis-Filho, J. S., & **Lakhani, S. R.** (2010). Breast pathology: beyond morphology. *Seminars in Diagnostic Pathology*, 27(1), 91-96.
- 180.** Smith, A., Tett, S., & **Hall, W. D.** (2010). The contribution of injecting drug users in Sydney, Melbourne and Brisbane to rising benzodiazepine use in Australia 2000 to 2006. *Aust N Z J Public Health.*, 34(3), 315-319.
- 181.** Smith, D. P., Banks, E., Clements, M. S., **Gardiner, R. A.**, & Armstrong, B. K. (2010). In Reply: Evidence-based uncertainty: recent trial results on prostate-specific antigen testing and prostate cancer mortality by Arnold. [Letter]. *MJA*, 192(2), 1.

- 182.** Smith, M. D., Chang, A. T., Seale, H. E., Walsh, J. R., & **Hodges, P. W.** (2010). Balance is impaired in people with chronic obstructive pulmonary disease. *Gait and Posture*, 31(4), 456-460.
- 183.** Spurdle, A. B., **Lakhani, S. R., Da Silva, L. M.,** Balleine, R. L., Investigators, k., & Goldgar, D. E. (2010). Bayes analysis provides evidence of pathogenicity for the BRCA1 c.135-1G>T (IVS3-1) and BRCA2 c.7977-1G>C (IVS17-1) variants displaying in vitro splicing results of equivocal clinical significance. *Human Mutation*, 31(2), 1141-1145.
- 184.** Stafford, R. E., Sapsford, R., Ashton-Miller, J., & **Hodges, P. W.** (2010). A novel transurethral surface electrode to record male striated urethral sphincter electromyographic activity. *Journal of Urology*, 183(1), 378-385.
- 185.** Stevenson, N. J., **Mesbah, M., & Boashash, B.** (2010). Multiple-view time-frequency distribution based on the empirical mode decomposition. *Signal Processing, IET*, 4(4), 447-456.
- 186.** Stevenson, N. J., **Mesbah, M.,** Boylan, G. B., **Colditz, P. B., & Boashash, B.** (2010). A nonlinear model of newborn EEG with nonstationary inputs. *Ann Biomed Eng.*, 38(9), 3010-3021.
- 187.** Strang, J., Hall, W. D., Hickman, M., & Bird, S. M. (2010). Impact of supervision of methadone consumption on deaths related to methadone overdose (1993-2008): analyses using OD4 index in England and Scotland. *BMJ*, 341, c4851.
- 188. Sullivan, S. M., Björkman, S. T., Miller, S. M., Colditz, P. B., & Pow, D. V.** (2010). Structural remodeling of gray matter astrocytes in the neonatal pig brain after hypoxia/ischemia. *Glia.*, 58(2), 181-194.
- 189. Sullivan, S. M., Björkman, S. T., Miller, S. M., Colditz, P. B., & Pow, D. V.** (2010). Morphological changes in white matter astrocytes in response to hypoxia/ischemia in the neonatal pig. *Brain Research*, 1319, 164-174.
- 190.** Szvetko, A. L., **Jones, A.,** Mackenzie, J., Tajouri, L., **Csurhes, P. A., Greer, J. M.,** Pender, M. P., & Griffiths, L. R. (2010). Investigation of the [-/A] 8 and C1236T genetic variations within the human toll-like receptor 3 gene for association with multiple sclerosis. *Neurological Research*, 32, 438-441.
- 191.** Teesson, M., **Hall, W. D.,** Slade, T., Mills, K., Grove, R., Mewton, L., Baillie, A., & Haber, P. (2010). Prevalence and correlates of DSM-IV alcohol abuse and dependence in Australia: findings of the 2007 National Survey of Mental Health and Wellbeing. *Addiction*, 105(12), 2085-2094.
- 192.** Thevathasan, W., **Silburn, P. A.,** Brooker, H., Coyne, T. J., Khan, S., Gill, S. S., Aziz, T. Z., & Brown, P. (2010). The impact of low-frequency stimulation of the pedunculopontine nucleus region on reaction time in parkinsonism. *Journal of Neurology, Neurosurgery and Psychiatry*, 81(10), 1099-1104.
- 193.** Tsao, H., Druitt, T. R., Schollum, T. M., & **Hodges, P. W.** (2010). Motor training of the lumbar paraspinal muscles induces immediate changes in motor coordination in patients with recurrent low back pain. *Journal of Pain*, 11(11), 1120-1128.
- 194.** Tsao, H., Galea, M. P., & **Hodges, P. W.** (2010). Driving plasticity in the motor cortex in recurrent low back pain. *European Journal of Pain*, 14(8), 832-839.
- 195.** Tsao, H., Tucker, K. J., Coppieters, M. W., & **Hodges, P. W.** (2010). Experimentally induced low back pain from hypertonic saline injections into lumbar interspinous ligament and erector spinae muscle. *PAIN*, 150(1), 167-172.
- 196.** Tucker, K. J., & **Hodges, P. W.** (2010). Changes in motor unit recruitment strategy during pain alters force direction. *European Journal of Pain*, 14(9), 932-938.
- 197.** Tynan, R. J., Naicker, S., Hinwood, M., Nalivaiko, E., **Buller, K. M., Pow, D. V.,** Day, T. A., & Walker, F. R. (2010). Chronic stress alters the density and morphology of microglia in a subset of stress-responsive brain regions. *Brain Behav Immun.*, 24(7), 1058-1068.
- 198.** Udy, A. A., Roberts, J. A., Boots, R. J., **Paterson, D. L., & Lipman, J.** (2010). Augmented renal clearance: implications for antibacterial dosing in the critically ill. *Clin Pharmacokinet.*, 49(1), 1-16.
- 199.** Vanleene, M., Saldanha, Z., Cloyd, K. L., Jell, G., Bou-Gharios, G., Bassett, J. H., Williams, G. R., **Fisk, N. M.,** Oyen, M. L., Stevens, M. M., Guillot, P. V., & Shefelbine, S. J. (2010). Transplantation of human fetal blood stem cells in the osteogenesis imperfecta mouse leads to improvement in multi-scale tissue properties. *Blood, Epub ahead of Print*.
- 200. Vargas, A. C., Da Silva, L., & Lakhani, S. R.** (2010). The contribution of breast cancer pathology to statistical models to predict mutation risk in BRCA carriers. *Fam Cancer.*, 9(4), 545-553.
- 201.** Vincent, Z. L., Farquhar, C. M., **Mitchell, M. D., & Ponnampalam, A. P.** (2010). Expression and regulation of DNA methyltransferases in human endometrium. *Fertil Steril., Epub ahead of Print*.
- 202.** Vuchkova, J., & **Farah, C. S.** (2010). Canine transmigration: comprehensive literature review and report of 4 new Australian cases. *Oral Surg Oral Med Oral Pathol Oral Radiol Endod.*, 109(4), e46-53.

- 203.** Waddell, N., Arnold, J., Cocciardi, S., **da Silva, L.,** Marsh, A., Riley, J., Johnstone, C., Orloff, M., Assie, G., Eng, C., **Reid, L., Keith, P.,** Yan, M., Fox, S., Devilee, P., Godwin, A., Hogervorst, F., Couch, F., Grimmond, S., Flanagan, J., Khanna, K., **Simpson, P., Lakhani, S.,** & Chenevix-Trench, G. (2010). Subtypes of familial breast tumours revealed by expression and copy number profiling. *Breast Cancer Research and Treatment*, 123(3), 661-677.
- 204.** Waddell, N., Cocciardi, S., Johnson, J., Healey, S., Marsh, A., Riley, J., **da Silva, L., Vargas, A. C., Reid, L., Simpson, P. T., Lakhani, S. R.,** & Chenevix-Trench, G. (2010). Gene expression profiling of formalin-fixed, paraffin-embedded familial breast tumours using the whole genome-DASL assay. *The Journal of Pathology*, 221(4), 452-461.
- 205.** Wales, L., Kruger, A. J., Jenkins, J. S., Mitchell, K., Boyne, N. S., & **Walker, P. J.** (2010). Mycotic carotid pseudoaneurysm: staged endovascular and surgical repair. *European Journal of Vascular And Endovascular Surgery*, 39(1), 23-25.
- 206.** Walker, L. C., Whiley, P. J., Couch, F. J., Farrugia, D. J., Healey, S., Eccles, D. M., Lin, F., Butler, S. A., Goff, S. A., Thompson, B. A., **Lakhani, S. R., da Silva, L. M.,** Tavtigian, S. V., Goldgar, D. E., Brown, M. A., & Spurdle, A. B. (2010). Detection of splicing aberrations caused by BRCA1 and BRCA2 sequence variants encoding missense substitutions: implications for prediction of pathogenicity. *Human Mutation*, 31(6), E1484-E1505.
- 207.** Watts, R. E., Hancock, V., Ong, C. Y., Vejborg, R. M., Mabbett, A. N., Totsika, M., Looke, D. F., **Nimmo, G. R.,** Klemm, P., & Schembri, M. A. (2010). Escherichia coli isolates causing asymptomatic bacteriuria in catheterized and noncatheterized individuals possess similar virulence properties. *Journal of Clinical Microbiology*, 48(7), 2449-2458.
- 208.** Whitbread, A. K., Veveris-Lowe, T. L., Dong, Y., Tan, O. L., **Gardiner, R. A.,** Samaratunga, H. M., Nicol, D. L., & Clements, J. A. (2010). Expression of PSA-RP2, an alternatively spliced variant from the PSA gene, is increased in prostate cancer tissues but the protein is not secreted from prostate cancer cells. *Biological Chemistry*, 391(4), 461-466.
- 209.** Wilcox, R. A., Cole, M. H., Wong, D., Coyne, T., **Silburn, P.,** & Kerr, G. (2010). Pedunculopontine nucleus deep brain stimulation produces sustained improvement in primary progressive freezing of gait. *J Neurol Neurosurg Psychiatry, Epub Ahead of Print*
- 210.** Winkler, I. G., Sims, N. A., **Pettit, A. R.,** Barbier, V., Nowlan, B., Helwani, F., Poulton, I. J., van Rooijen, N., Alexander, K. A., **Raggatt, L. J.,** & Levesque, J. P. (2010). Bone marrow macrophages maintain hematopoietic stem cell (HSC) niches and their depletion mobilizes HSCs. *Blood*, 116(23), 4815-4828.
- 211.** Wolf, J., Daley, A. J., Tilse, M. H., **Nimmo, G. R.,** Bell, S., Howell, A. J., Keil, A. D., Lawrence, A., & Curtis, N. (2010). Antibiotic susceptibility patterns of Staphylococcus aureus isolates from Australian children. *J Paediatr Child Health*, 46(7-8), 404-411.
- 212.** Woltjer, R. L., Duerson, K., Fullmer, J. M., Mookherjee, P., Ryan, A. M., Montine, T. J., Kaye, J. A., Quinn, J. F., Silbert, L., Erten-Lyons, D., Leverenz, J. B., Bird, T., **Pow, D. V.,** Tanaka, K., Watson, G. S., & Cook, D. G. (2010). Aberrant detergent-insoluble excitatory amino acid transporter 2 accumulates in Alzheimer disease. *Journal of Neuropathology and Experimental Neurology*, 69(7), 667-676.
- 213.** Xu, H., Balakrishnan, K., Malaterre, J., Beasley, M., Yan, Y., Essers, J., Appeldoorn, E., Tomaszewski, J. M., Vazquez, M., Verschoor, S., **Lavin, M. F.,** Bertoncello, I., Ramsay, R. G., & McKay, M. J. (2010). Rad21-cohesin haploinsufficiency impedes DNA repair and enhances gastrointestinal radiosensitivity in mice. *PLoS One.*, 5(8), e12112.
- 214. Yan, J., Greer, J. M.,** Hull, R., O'Sullivan, J. D., Henderson, R. D., Read, S. J., & **McCombe, P. A.** (2010). The effect of ageing on human lymphocyte subsets: comparison of males and females. *Immun Ageing.*, 16(7), 4.
- 215.** Zhang, Z. Y., Teoh, S. H., Chong, M. S. K., **Lee, E. S. M.,** Tan, L. G., Mattar, C. N., **Fisk, N. M.,** Choolani, M., & Chan, J. (2010). Neo-vascularization and bone formation mediated by fetal mesenchymal stem cell tissue-engineered bone grafts in critical-size femoral defects. *Biomaterials.*, 31(4), 608-620.
- 216.** Brown, L., Williams, L., & **Capra, S.** (2010). Going rural but not staying long: Recruitment and retention issues for the rural dietetic workforce in Australia. *Nutrition & Dietetics*, 67(4), 294–302.
- 217.** Ferguson, M., Banks, M., Bauer, J., Isenring, E., Vivanti, A., & **Capra, S.** (2010). Nutrition screening practices in Australian healthcare facilities: A decade later. *Nutrition & Dietetics*, 67(4), 213-218.
- 218.** Petersen, M., Wilson, J., Wright, O. R. L., & **Capra, S.** (2010). Understanding food in aged care facilities: Findings from a case study. *Australasian Journal of Aging*, 29(2), 32.
- 219.** Wright, O. R. L., **Capra, S.,** & Connelly, L. B. (2010). Foodservice satisfaction domains in geriatrics, rehabilitation and aged care. *Journal of Nutrition, Health and Aging*, 14(9), 775-780.



APPENDIX THREE

CONFERENCE PRESENTATIONS 2010

INVITED SPEAKERS	
Professor Helen Chenery	Invited Speaker: “Cognitive-linguistic consequences of deep brain stimulation of the subthalamic nucleus in patients with Parkinson’s disease” 2nd international symposium on Basal Ganglia Speech Disorders and Deep Brain Stimulation, Aix-en-Provence, France (July)
Professor Robert Gardiner	Invited Speaker: “Early Diagnosis Of Prostate Cancer” Institute for Biomedical Aging Research, Austrian Academy of Sciences, Innsbruck, Austria (June)
Professor Nicholas Fisk	Invited Speaker: “Fetal therapy: The stem cell approach” International Society for Prenatal Diagnosis, Amsterdam (July)
Professor Nicholas Fisk	Invited Speaker: “The Ideal Medical School in the Era of Globalisation: “Siriraj Scientific Congress, Bangkok (August)
Professor Wayne Hall	Invited paper: “Possible lessons for tobacco control from experiences with banning or restricting other drugs” Asia Pacific Conference on Tobacco and Health, Sydney (October)
Professor Wayne Hall	Invited paper: “Decriminalization or interdiction. What works for drug crime?” 12th International Criminal Law Conference, Noosa, Queensland, (October)
Professor Wayne Hall	Invited moderator: “Addiction Neuroethics” Annual Conference, Neuroethics Society, San Diego, California (November)
Professor Sunil Lakhani	Lecture: “The Future of Anatomical Pathology in Queensland” 2010 Pathology Queensland Scientific Meeting, Brisbane, Australia
Professor Sunil Lakhani	Chair and invited speaker: “Lobular carcinoma” Pathology & Molecular 2010 European Breast Cancer Congress, Barcelona, Spain
Associte Professor Kiarash Khosrotehrani	Invited Leader for Dermatology Grand Round in Seattle, University of Washington (May)
Associte Professor Kiarash Khosrotehrani	Session Chair: Melanoma Biology 1 SMR-Sydney (International Melanoma Research Congress) (November)
Professor Sunil Lakhani	Invited Lecturer at 2010 Australasian Society for Breast Disease in association with the Auckland Breast Cancer Study Group, Auckland, New Zealand
Professor Sunil Lakhani	Invited Lecturer at 2010 Singapore General Hospital Breast Pathology Course, Singapore
Professor Murray Mitchell	Invited Chair of Session “Inflammation and innate immunity in reproductive events” at XIth International Congress in Reproductive Immunology, Palm Cove, Queensland 2010
Professor Gregory Rice	Invited Lecture: “Protein Biomarkers and Multimarker Diagnostics” 8th Annual Meeting of the Australasian Biospecimen Network Association, Brisbane (December)
Professor Gregory Rice	Invited Lecture: “Setting your laboratory up to success” Laboratory Managers Association Conference, Brisbane, (November)
Professor Gregory Rice	Invited Lecture: “Proteomics as a tool for prediction of cell dysfunction in pregnancy”. Chilean Society of Physiological Sciences (SCHCF) (October)

INVITED SPEAKERS	
Professor Gregory Rice	Invited Lecture: “The development of new screening test for early detection of complication of pregnancy: proteomics approaches.” Gestosis Conference on Clinical Pathophysiology of Pregnancy, Pune, India (September)
Associate Professor Stephen Rose	Invited Speaker: “The FA Connectome: a Quantitative Strategy for Studying Neurological Disease Processes” and “Improved Delineation of Brain Tumour Margins using Whole-brain Track-Density Mapping” International Society for Magnetic Resonance in Medicine, Stockholm, Sweden, (May)
Associate Professor Stephen Rose	Keynote talk: “New insight into brain injury and plasticity using MRI structural connectivity analyses” Australian Neurocognitive Neurosciences Confence, Melbourne (November)

ORAL AND POSTER PRESENTATIONS	
Dr Tracey Björkman	“Effect of neonatal hypoxia / ischemia on GABA <sub>A</sub> receptor protein expression” European Academy of Pediatric Societies, Copenhagen (October)
Dr Tracey Björkman	“GABAA receptor a3 cortical expression in perinatal asphyxia” Australian Neuroscience Society, Sydney (February)
Professor Helen Chenery	“Evidence and innovation in applied aged health care research: A focus on caregivers” [Chenery, H.J., & Pachana, N] International Federation on Aging 10th Global Conference, Melbourne, Australia (May)
Professor Helen Chenery	“Conversational Analysis of People with Dementia and their Caregivers” [Broughton M, Smith E, Baker R, Gallois C, Havas K, Angwin A, Humphreys M, Pachana, N, Copland D, Byrne G, Chenery H] International Conference on Language and Social Psychology, Brisbane, Australia (June)
Professor Helen Chenery	“Supporting Memory and Communication in People with Dementia: An Educational Program for Caregivers” [Broughton, M., Smith, E., Baker, R., Pachana, N., Angwin, A., Byrne, G., Humphreys, M., Chenery, H] and “Evaluating Communication Strategies in Dementia: Conversations between Aged Care Staff and Residents” [Smith, E., Broughton, M., Baker, R., Gallois, C., Angwin, A., Havas, K., Copland, D., & Chenery, H] The Gerontological Society of America 63rd annual scientific meeting, New Orleans (November)
Professor Helen Chenery	“The RECAPS program: relieving the burden of care in dementia” [Mitchell, L., Pachana, N., Chenery, H. J., Humphries, M., Hegney, D., Byrne, G., Gallois, C., Copland, D., Angwin, D., Baker, R., & Smith, E] First Joint Conference of the Australian Psychological Society Psychology & Ageing Interest Group (PAIG) and the Royal Australia/New Zealand College of Psychiatrists (RANZCP) Faculty of Psychiatry of Old Age (FPOA) (November)
Professor Paul Colditz	“Signal processing applications in clinical medicine to improve newborn health outcomes” 10th International Conference on Information Sciences and Signal Processing, Kuala Lumpur, Malaysia (May)
Professor Nicholas Fisk	“Manipulating homing and engraftment to increase uptake after fetal MSC transplantation” and “Generating fetal-like stem cells from inducible pluripotent stem cells and amniotic germ cells “ International Fetal Medicine and Surgery Society Conference, Japan (September)
Dr Judith Greer	“How does antibody modulate T cell mediated EAE?” Inaugural Neuroimmunology Australia meeting. Brisbane (May)
Professor Robert Gardiner	“Multiple markers in prostate cancer detection from ejaculate” URS, Canada (September)
Professor Robert Gardiner	“Towards Non-Invasive Detection Of Prostate Cancer” USANZ, Perth, WA (March)

ORAL AND POSTER PRESENTATIONS	
Dr Judith Greer	“Elevated levels of autoantibodies against neurotransmitter receptor-related molecules in schizophrenia”; “Enhancing protective effects of modified peptides for treatment of multiple sclerosis” and “Role of antibody and complement in determining site of lesion development in an animal model of multiple sclerosis” 10th International Congress of Neuroimmunology, Sitges, Spain (October)
Associate Professor Kiarash Khosrotehrani	“Melanoma growth and metastasis is dependent on the presence of vitronectin in the extracellular matrix” [Nassar D, Droitcourt C, Mathieu-d’Argent E, Parant O, Oster M, Uzan S, Khosrotehrani K*, Aractingi S] and “Fetal cells persist in maternal chronic wounds, form blood vessels in situ and enhance healing” [Mesnard L, Prignon A, Halabi M, Guegan S, Rondeau E, Aractingi S,Khosrotehrani K] SID International Symposium, Seminar and Exhibition, Seattle (May)
Associate Professor Kiarash Khosrotehrani	“Calpain activity is essential for cell recruitment, myofibroblast differentiation and angiogenesis in early stages of skin wound” Nassar D, Letavernier E, Baud L, Aractingi S, Khosrotehrani K. SID International Symposium, Seminar and Exhibition, Seattle (May)
Associate Professor Kiarash Khosrotehrani	“Fetal progenitors with endothelial capacity form blood vessels during various maternal situations of angiogenesis” [Nassar, Khosrotehrani, Guegan, Aractingi] International Society for Stem Cell Research, San Francisco (June)
Professor Martin Lavin	“Ataxia-Telangiectasia: Background, Diagnosi, Research”, Brisbane, Australia (February)
Professor Martin Lavin	“Ataxia Telangiectasia” AACG Dysmorphology Meeting and Fellows’ Training Day, Genetic Health Queensland (February)
Professor Martin Lavin	“Senataxin, defective in AOA2, protects against oxidative stress and transcription dysregulation”, Ataxia Investigators Meeting, Chicago, USA (March)
Professor Martin Lavin	“A varied phenotype with Rad50 deficiency”, Memorial Sloan Kattering Cancer Centre, Main Campus, New York, USA (March)
Professor Martin Lavin	“Ataxia oculomotor apraxia and autosomal recessive ataxias”, 53rd Ataxia National Foundation Annual Membership Meeting, Chicago, USA, (March)
Professor Martin Lavin	“DNA Repair and Neurological disease”, “Role of senataxin in protecting against neurodegeneration”, Hilton Metropole Hotel, Brighton, England, UK (July)
Professor Martin Lavin	“Role of Rad50 in maintaining genome stability”, Genome Damage and Stability Centre, University of Sussex, UK (July)
Professor Martin Lavin	“Ataxia-telangiectasia” Xavier Society Dinner, Victoria Park Function Centre, Brisbane in aid of BrAshA-T Limited (September)
Professor Martin Lavin	“Relationship between the TMPRSS2 – Erg gene fusion and prostate cancer metastases” Urological Society Meeting, Niagara on the Lake Toronto, Canada (September)
Professor Martin Lavin	Welcome Address 7th Indo-Australian Biotechnology Conference, Mercure Hotel, Brisbane (October)
Dr Barbara Lingwood	“Cardiac structure and function in preterm piglets” [Eiby YA, Kim MY, Gray E, Lumbers ER, Lingwood BE] The Thirty-Seventh meeting of the Fetal and Neonatal Physiological Society, Winchester, UK (November)
Dr Barbara Lingwood	“Cardiac function in preterm piglets” [Eiby YA, Gray PE, Lumbers ER, Lingwood BE.] and “Developmental changes in maturity of cardiomyocytes” [Kim MY, Eiby YA, Barnett A, Lumbers ER, Lingwood BE.] The Twenty-Fourth Fetal and Neonatal Workshop of Australia and New Zealand, Wellington, New Zealand (March)

ORAL AND POSTER PRESENTATIONS	
Dr Barbara Lingwood	“Body Composition in Infants Born to Women with Gestational Diabetes” [Fullerton AM, Callaway LK, D’Emden M, Mortimer RH, Colditz PB, Lingwood BE.] and ‘Prediction of fat free mass and % body fat in neonates using bio-impedance analysis and anthropometric measures” [Storm van Leeuwen AM, Carberry AE, Fitzgerald E, Ward LC, ColditzPB, Lingwood BE. ] Perinatal Society of Australia and New Zealand (March)
Associate Professor Jayne Lucke	“Reproductive health: Findings from the Australian Longitudinal Study on Women’s Health” [Lucke J, Chojenta C & Loxton D.] Panel discussion at the Women’s Health Conference, Hobart, Tasmania (May)
Associate Professor Jayne Lucke	“Continuation rates and reasons for removal among 976 Implanon ® users accessing two family planning clinics in Queensland, Australia” [Harvey, C., Seib, C. & Lucke, J.]RACGP’s 53rd Gold Coast Clinical Update, Gold Coast, Australia (May)
Associate Professor Jayne Lucke	“History behind the egg: Women’s comprehensive histories and IVF outcomes, Australia, 2008-2009” [Herbert D, Lucke J, & Dobson A.] Society for Epidemiologic Research (SER) Annual Conference Seattle, USA, (June). Abstract published in American Journal of Epidemiology 2010;171(Suppl):S1–S157
Associate Professor Jayne Lucke	“History behind the egg: Associations between women’s comprehensive histories and number of eggs collected or fertilized normally” [Herbert D, Lucke J, & Dobson A.] Australian Epidemiological Association Annual Scientific Meeting, Sydney (October)
Associate Professor Jayne Lucke	“The perfect mother wouldn’t have that’ Australian women’s experiences of motherhood and postnatal depression” [Chojenta, C., Loxton, D. & Lucke, J.] Annual Qualitative Health Research Conference, Vancouver, Canada (October)
Associate Professor Jayne Lucke	“Perceptions and disconnections of caregiving” [Tooth, L., McKenzie, S. J., Hockey, R., Lucke, J., & Dobson, A.] and “Caregivers use of health and community services: Importance of stage of care transition” [Tooth, L., McKenzie, S. J., Hockey, R., Lucke, J., & Dobson, A] 43rd Australian Association of Gerontology conference, Hobart, Tasmania, Australia (November)
Professor Murray Mitchell	“Environmental factors in pregnancy: their influence on adult disease” Royal Brisbane & Women’s Hospital Health Care Symposium (September)
Professor Murray Mitchell	“Epigenetic Regulation of the Inflammatory Response in Placenta”; “Regulation of DNA Methyltransferases (DMNTs) and Cell Cycle Regulators during Decidualization”; “Histone Acetylation changes in the Human Endometrium during the Menstrual Cycle”; “Expression and Regulation of DNA Methytransferases in Hyman endometrium during the Menstrual Cycle”; “The role of 14-3-3σ in the Modulation of DNA Methylation Effect on Trophoblas Cell Cycle and Differentiation” and “Dynamic Changes in the Expressions of DNA Methyltransferases (DNMT’s) in Placenta Associated with Labour in Women” Society of Gynecologic Investigation, Orlando (March)
Professor David Paterson	Meet-the-Experts: MDR-Gram-Negative Bacilli: Problems and Pitfalls in Screening Methods (September)
Professor David Paterson	“C1-1332 – A New Threat from Carbapenem Resistant Klebsiella pneumoniae - the New Delhi Metallo-β-lactamase (NDM-1)” [H. E. Sidjabat, G. R. Nimmo, E. Binotto, R. Enbom, N. George, D. L. Paterson] Interscience Conference on Antimicrobial Agents and Chemotherapy, Boston USA (September)
Professor David Paterson	“K-614 – Clinical Outcome of Bacteremia Due to Klebsiella pneumoniae Carbapenemase (KPC)-Producing Klebsiella pneumoniae”[Z. A. Qureshi, D. L. Paterson, J. M. Adams-Haduch, E. M. Sordillo, B. Polsky] Interscience Conference on Antimicrobial Agents and Chemotherapy, Boston USA (September)
Professor David Paterson	“B-1410 / 63 – Genetic and Phenotypic Characterization of the Acinetobacter calcoaceticus-A. Baumannii Complex” [A. Y. Peleg, A. Mcalister, A. De Breij, M. Lasalvia, S. Stevenson, A. Earl, D. Paterson, P. Nibbering, H. Seifert, L. Dijkshoorn] Interscience Conference on Antimicrobial Agents and Chemotherapy, Boston USA (September)



ORAL AND POSTER PRESENTATIONS	
Professor David Paterson	“A1-664/13 – Population PK Model for Colistin (C) & C Methanesulfonate (CMS) in Critically Ill Patients” [S. M. Garonzik, A. Forrest, J. Li, V. Thamlikitkul, D. Paterson, S. Shoham, J. Jacob, F. Silveira, R. L. Nation] Boston USA (September)
Professor David Paterson	“C2-679/119 – Replicon Typing of Plasmids Carrying blactx-M-15 and blacmy-2 in Escherichia coli from Australia” [H. E. Sidjabat, A. Silvey, K. Seah, W. Yam, G. R. Nimmo, N. George, D. L. Paterson] Interscience Conference on Antimicrobial Agents and Chemotherapy, Boston USA (September)
Professor David Paterson	“K-290/307 – The Presence of Heteroresistant Vancomycin Resistance in Staphylococcus aureus Bloodstream Infections is not Associated with Increased Mortality” [S. J. Van Hal, D. L. Paterson, I. B. Gosbell] Interscience Conference on Antimicrobial Agents and Chemotherapy, Boston USA (September)
Professor David Pow	“Cloning and Identification of Multiple New Variant Forms of the Predominant Photoreceptor Glutamate Transporter EAAT5” [D.V. Pow, A. Lee] ARVO, Ft Lauderdale, USA (May)
Dr Hanna Sidjabat	“Occurrence of Escherichia coli O25b-ST131 in South East Queensland and its Detection using the Diversilab® rep-PCR System” Antimicrobials 2010 by Australian Society for Antimicrobials, Sydney, Australia (February)
Dr Hanna Sidjabat	“Replicon Typing of Plasmids Carrying blaCTX-M-15 and blaCMY-2 in Escherichia coli from Australia” and “A New Threat from Carbapenem Resistant Klebsiella pneumoniae: The New Delhi Metallo-β-Lactamase (NDM-1)” 50th Interscience Conference on Antimicrobial Agents and Chemotherapy Boston, USA (September)
Dr Hanna Sidjabat	“Clinical Significance of Mycobacterium lentiflavum – An Emerging Pathogen Found in Potable Water” European Respiratory Society, Barcelona, Spain (September)
Dr Hanna Sidjabat	Out of India, Queensland Pathology Ground Round (April)
Dr Hanna Sidjabat	“NDM-1 as a cause of antibiotic resistance: facts and furore” 7th Indo-Australia Biotechnology Conference, Brisbane, Australia (October)
Dr Hanna Sidjabat	“Lapband surgery” Australian Mycobacterium Reference Laboratory Network (AMRLN) (March)
Dr Hanna Sidjabat	“Dabbling with DASL – gene expression profiling FFPE clinical samples”. FFPE workshop, University of Otago, Dunedin, New Zealand (October)
Dr Peter Simpson	“HER3 and downstream pathways are involved in colonization of brain metastases from breast cancer” A combined meeting of kConFab, Australian Ovarian Cancer Study (AOCS), ACCFS & Family Cancer Clinics of Australia and New Zealand, Kingsliffe, NSW (August)
Dr Peter Simpson	“Gene expression profiling archival clinical samples using WG DASL” A combined meeting of kConFab, Australian Ovarian Cancer Study (AOCS), ACCFS & Family Cancer Clinics of Australia and New Zealand. Kingsliffe, NSW (August)
Dr Peter Simpson	“Interrogating the molecular heterogeneity of Luminal breast tumours” AMATA Australasian Microarray Associated Technologies Association annual meeting, Hobart, Tasmania (September)
Dr Peter Simpson	“Interrogating the molecular heterogeneity of Luminal breast tumours” Royal Brisbane & Women’s Hospital Health Care Symposium (September)
Dr Andreas Zankl	“Application of Next Generation Sequencing in the Diagnosis of Bone Dysplasias” Manchester Dysmorphology Conference, Manchester, UK, (October)

# APPENDIX FOUR

## SEMINARS HELD AT UQCCR 2010

UQCCR ran a regular weekly seminar series through 2010 for the benefit of UQCCR, QIMR and RBWH researchers. The series comprised a mix of presentations from UQCCR staff (\*) and external invited speakers.

DATE	SPEAKERS
18 February 2010	Professor Lavin, Professor Gardiner and Dr Coughlin (*)
25 February 2010	Professor Gregory Rice (*)
4 March 2010	Professor Lawrie Powell, RBWH Director of Research
18 March 2010	Dr Conor Brophy, Chair RBWH Ethics Committee
1 April 2010	Professor James Blackman, Director of the Kluge Rehabilitation Centre, Virginia, USA
9 April 2010	Associate Professor Jayne Lucke (*)
12 April 2010	Professor Judy Illes, Professor of Neurology and Canada Research Chair in Neuroethics at the University of British Columbia
22 April 2010	Professor Wayne Hall (*)
6 May 2010	Professor Tom Gordon, Professor and Head of the Department of Immunology at the Flinders Medical Centre site of SA Pathology
13 May 2010	Professor Roy Kimble, Paediatric Surgeon & Director of Burns & Trauma in the Combined Department of Paediatric Surgery, Brisbane
20 May 2010	Professor Sean Grimmond, Director of the Queensland Centre for Medical Genomics
27 May 2010	Dr James Scott (*)
3 June 2010	Professor Timothy Walsh, Professor of Medical Microbiology and Antibiotic Resistance at University of Cardiff
10 June 2010	Dr Alison Mudge, Staff specialist, Internal Medicine and Aged Care, RBWH
17 June 2010	Dr Linda Lua, Head of the UQ Protein Expression Facility
24 June 2010	Dr Lata Vadlamudi (*)
6 July 2010	Associate Professor Damien Harkin, QUT
8 July 2010	Dr Michael Steyn, Consultant in Anaesthesia for Burns and Plastic / Reconstructive Surgery
15 July 2010	Professor Khoo, Chair of Obstetrics and Gynaecology at The University of Queensland
22 July 2010	Professor Robert G Fassett, Professor of Medicine at The University of Queensland
5 August 2010	Associate Professor Philip Walker & Dr Chris Askew (*)
12 August 2010	Professor Linda Richards, Associate Professor in the Queensland Brain Institute and The School of Biomedical Sciences

DATE	SPEAKERS
19 August 2010	Dr Alison Mudge Dr Lynda Ross & Julie Adsett 'Heart to heart: a team approach to heart failure research'
26 August 2010	Professor Andrew Shorr, Associate Director of Pulmonary and Critical Care at the Washington Hospital Centre and Associate Professor of Medicine at Georgetown University
2 September 2010	Dr Andreas Zankl (*)
13 September 2010	Dr Zhang Zhiyong, 'Developing an off-the-shelf bone tissue engineering strategy for large scale clinical application'
30 September 2010	Professor Andrew Boyd, Professor of Experimental Haematology at UQ and SPRF at the QIMR
7 October 2010	Associate Professor Karen Woolley, 'Be alert, but not alarmed. Recent international developments affecting clinical research publications'
21 October 2010	Associate Professor Sanjoy Paul, Director of the newly created Queensland Clinical Trials & Biostatistics Centre
18 November 2010	Professor Michael Breakspear, Chair of the Division of Mental Health Research at the Queensland Institute of Medical Research
25 November 2010	Dr Martin Wulschleger, Trauma and General Surgeon
9 December 2010	Dr Tracey Björkman (*)

In addition, our RHD students run their own seminar series both to inform their colleagues about their own research (\*) and to invite speakers to share their experience in research.

DATE	SPEAKERS
February 2010	Julie Varghese and Lucy Gebbett (*)
April 2010	Associate Professor David Copland
May 2010	Neelam Malik (*)
June 2010	Hanna Reinebrant – PhD Student Confirmation of Candidature Presentation
June 2010	Abdulrahman Al Sayyari (Rose Group) & Marian Butler (UQ Student Services)
August 2010	Marian Butler (UQ Student Services) & Brad Stefanovic
September 2010	UQCCR Open Day
October 2010	Presentations from Honours cohort 2010
November 2010	Julie Wixey & Dr Judith Greer (*)

# APPENDIX FIVE

## RESEARCH HIGHER DEGREE STUDENTS

UQCCR supervisors are shown in bold.

### Completions in 2010

STUDENT	DEGREE	PROJECT	SUPERVISORS
Alexander, Kylie	PhD	Osteoimmunologic mechanisms in bone pathology	<b>Dr A Pettit, Dr L Raggatt,</b> Professor D Hume
Dawson, Anna	PhD	Prevention of back pain in nurses	<b>Professor P Hodges,</b> Professor G Jull
Davies, Mark	PhD	Partial Liquid Ventilation (PLV) Optimisation for use in Pre term Infants	<b>Professor P Colditz,</b> Professor C Morley
Kalanjati, Viskasari	PhD	Brain development, hypoxia and nutrient deprivation	<b>Professor P Colditz,</b> <b>Dr S T Björkman</b>
Nordstrand, Indra	MPhil	Assessment of cardiac myxoma tumour markers and identification of a cellular basis for the use of antithrombotic agents in management	<b>A/Professor P Walker,</b> Dr B Clarke, Dr E Stafford
Peleg, Anton	PhD	The Perils and Pearls of Acinetobacter – an emerging gram-negative pathogen	<b>Professor D Paterson,</b> A/Professor E Mylonakis, A/Professor J McCormack
Yang, Chich-Haung	PhD	Biomechanical Assessment of Effectiveness of Manipulative Physiotherapy	Professor G Vicenzino, <b>Professor P Hodges</b>

### Enrolments in 2010

STUDENT	DEGREE	PROJECT	SUPERVISORS	START DATE
Sindi, Ikhlās	PhD	Disruption of nerve-cell connections in Alzheimer's disease through the assay of the trans-synaptic proteins: neurexins and neuroligins	<b>A/Professor G Byrne,</b> Dr R Tannenberg, Dr P Dodd	8/11/2010
Adnan, Syamhanin	PhD	Improving Antibiotic Use in Critically Ill and Immunocompromised patients	<b>Professor D Paterson,</b> Dr Roberts	5/11/2010
Van den Hoorn, Wolbert	PhD	Mechanisms underlying the coordinated an dysfunction of muscles used for breathing and postural tasks	<b>Professor P Hodges,</b> Professor J van Dieen	27/10/2010
Kamolvit, Witchuda	PhD	Carbapenem resistance in commonly encountered Gram negative bacilli	<b>Professor D Paterson</b>	21/10/2010



STUDENT	DEGREE	PROJECT	SUPERVISORS	START DATE
Alayan, Jamil	MPhil	Randomised clinical trial comparing DBBM vs DBBM-Collagen with and without autogenous bone in deficient maxillary sinuses for the purpose of dental implant placement	<b>A/Professor C Farah,</b> Dr Marie Matias	17/08/2010
Omidvarnia, Amir	PhD	EEG background abnormalities: Analysis and classifications	<b>Professor P Colditz, Dr M Mesbah, Professor B Boashash</b>	6/08/2010
Tattersall, Timothy	PhD	Neural mechanisms that underlie emotional memory formation and extinction	Professor P Sah, <b>A/Professor G Byrne,</b> Dr Fr Windels	12/07/2010
Van Hal, Sebaatian	PhD	Associations between Stphylococcus aureas and the clinical outcomes in bacteremic patients	<b>Professor D Paterson</b>	7/06/2010
Peiris, Hassendrini	PhD	The role of myostatin in the placenta	<b>Professor M Mitchell</b>	1/06/2010
Stewart, Romal	PhD	A cellular model to investigate the role of ATM in the nervous system	<b>Professor M Lavin,</b> Dr S Kozlov	25/05/2010
Rogers, Benjamin	PhD	Clinical, epidemiological and molecular characteristics of E.coli (Escherichia coli) infection and its antimicrobial resistance	<b>Professor D Paterson</b>	1/04/2010
Jessri, Maryam	PhD	Cancerous & precancerous lesions of oral cavity and comparisons of their genetic profile in young and old patients: MMR genes	<b>A/Professor C Farah,</b> <b>Dr A Dalley</b>	8/03/2010
Roxbury, Tracy	PhD	Neurophysiological markers of language recovery in acute stroke	<b>A/Professor D Copland,</b> Dr K McMahon	8/03/2010
Blum, Stefan	PhD	Pathogenesis of Guillain-Barre syndrome and chronic inflammatory polyradiculoneuropathy	<b>A/Professor P McCombe,</b> <b>Dr J Greer</b>	4/03/2010
Cumin, Michelle	PhD	Nutritional outcomes in preterm infants	<b>Dr B Lingwood,</b> Dr T Donovan, <b>Professor P Colditz</b>	1/03/2010
Vaska, Vikram	PhD	Clinical, health economic, epidemiologic and molecular aspects of staphylococcus aureus infections in Queensland	<b>Professor D Paterson,</b> <b>A/Professor G Nimmo</b>	1/03/2010
Leveque, Lucie	PhD	Auto-immunity and allogenic chimerism acquired during pregnancy	<b>A/Professor K Khosrotehrani</b>	18/02/2010
Nayler, Samuel	PhD	Ataxia telangiectasia and induced pluripotent stem cells	<b>Professor M Lavin,</b> A/Professor E Wolvetang	12/02/2010
Waddoups, Jennifer	PhD	An analysis of the public health and social policy implications of neurobiological and genetic research on gambling and other addictions	<b>Professor W Hall,</b> <b>A/Professor J Lucke</b>	8/02/2010
Seppanen, Elke	PhD	Fetal microchimerism in maternal tissue repair	<b>Professor N Fisk,</b> <b>A/Professor K Khosrotehrani</b>	31/01/2010

Ongoing Students

STUDENT	DEGREE	PROJECT	SUPERVISORS
Abdul Majeed, Ahmad	PhD	Alterations in Gene Expression during the Early Stages of Oral Carcinogenesis	<b>A/Professor C Farah,</b> <b>Dr J Saunus</b>
Abdul Murad, Nor	PhD	Nature of the genetic defect in Ataxia Oculomotor Apraxia Type 3 (AOA3)	<b>Professor M Lavin,</b> Dr O Becherel
Al Sayyari, Abdulrahman	PhD	Development of Novel MRI Biomarkers for early detection of tumour recurrence	<b>A/Professor S Rose,</b> Professor A Coulthard, Professor G Galloway
Awabdy, Doreen	PhD	Neuroprotection and Neuroreceptor Ontogeny in the Developing Brain	<b>Professor P Colditz,</b> Dr P Dodd, <b>Dr K Buller</b>
Barton, Joshua	PhD	The Blind Spot; a tool for studying visual perception	Dr P Broerse, <b>A/Professor G Byrne</b>
Baumann, Fusun	PhD	Detection of objective markers of disease progression in patients with Motor Neuron Disease (MND)	<b>A/Professor P McCombe,</b> Dr R Henderson
Beasley, Shannon	PhD	Role and mechanism of action of myelin-specific antibodies from multiple sclerosis patients	<b>Dr J Greer, Professor D Pow,</b> Professor M Pender
Birt, John	PhD	Learning and memory in the cerebellum	Dr M Bellingham, Dr J Power, Professor M Lavin
Campbell, Peter	MPhil	Clinical disagreement: its influence on the practice of urology	Dr P McTaggart, <b>Professor R Gardiner</b>
Carty, Michelle	PhD	Neuroanatomical changes under-pinning functional deficits after hypxic-ischaemic injury in the pre-term brain	<b>Dr K Buller, Dr S T Björkman</b>
Coelho Da Silva Goncalves, Daniela	PhD	Prospective study of the emergency of syndromal and subsyndromal anxiety and depression during cognitive decline	<b>A/Professor G Byrne,</b> A/Professor N Pachana
Costantini, Kerina	PhD	The Role of C5a in Pathophysiology	Professor S Taylor, <b>Professor P Colditz,</b> Dr P Noakes, Professor L Callaway, <b>Dr Leith Lester</b>
Crombie, Anthony	MPhil	Primary chemoradiotherapy for oral & oropharyngeal squamous cell carcinoma	<b>A/Professor C Farah,</b> Dr M Batstone
Dong, Shiyong	MPhil	Heart rate variability for assessment of autonomic nervous system function in neonates	<b>Dr M Mesbah, Dr B Lingwood, Dr J O'Toole</b>
Fattahi, Fariba	PhD	Structure and function of the trunk muscles in low back pain	<b>Professor P Hodges</b>
Flanagan, Kieran	PhD	The role of perceptual symbols in the representation of semantic concepts in dementia	Dr A Angwin, <b>A/Professor D Copland</b>
Fowler, Gregory	PhD	Illegal drug markets and population health: modeling ecstasy and cannabis markets in Australia	<b>Professor W Hall,</b> A/Professor C Doran
Francis, Glenn	PhD	Protein expression and molecular profiling using tissue microarrays to predict lymph node status in breast cancer	<b>A/Professor C Farah,</b> Dr G Beadle

STUDENT	DEGREE	PROJECT	SUPERVISORS
Gianduzzo, Troy	MPhil	Laser Robotic-Assisted Laparoscopic Radical Prostatectomy	Professor Singh-Gill, <b>Professor R Gardiner</b>
Gildea, Jan	PhD	The activation pattern of trunk and pelvic muscles during loading through the foot in dancers and non-dancers with and without low back pain	<b>Professor P Hodges,</b> Professor J Hides
Hall, Leanne	PhD	The contribution of dopamine to the regulation of orofacial, limb and trunk control - system or functional specific effects?	<b>Professor P Hodges,</b> A/Professor S Brauer
Harper-Hill, Keely	PhD	Does language processing in individuals with ASD vary as a function of modality under conditions of increased stress?	<b>A/Professor D Copland,</b> Dr W Arnott, Dr G Woodyatt
Heath, Shiree	PhD	Neurocognitive substrates of naming facilitation in aphasia	<b>A/Professor Copland,</b> Dr A Angwin, Dr K McMahon
Heazlewood, Celina	PhD	Neuronal differentiation potential of mesenchymal stem cells and their use in animal models of neurological disease	Professor M Atkinson, Dr G Brooke, <b>Professor N Fisk</b>
Hemsley, Gayle	PhD	Language learning outcomes in early sequential bilinguals	<b>Professor B Dodd,</b> <b>Dr A Holm</b>
Higgs, Crystal	PhD	The role of vesicular glutamate and GABA transporters in Alzheimer's disease	Professor P Dodd, Dr R Tannenberg, <b>A/Professor G Byrne</b>
Hoenig, Michael	PhD	The use of cholestAnol to cholesterol ration to guide therapy: LDL lowering. The target LDL study.	<b>A/Professor P Walker,</b> Dr J Bingley
Ireland, Penelope	PhD	A population-based analysis of development in young Australian children with Achondroplasia	Dr L Johnson, <b>Dr A Zankl,</b> Dr J McGill
Jardine, Luke	PhD	Development of early predictors of long-term outcome in premature infants	<b>Professor P Colditz,</b> Dr M Davies
Jones, Amanda	PhD	Autoimmunity in schizophrenia	<b>Dr J Greer,</b> Professor M Pender, A/Professor B Mowry
Karayannis, Nicholas	PhD	In influence of motor control, pain and psychological factors on low back pain classification	<b>Professor P Hodges,</b> Professor G Jull
Khlif, Mohammed	PhD	Multi-channel time-frequency analysis for EEG neonatal seizure characterisation	<b>Professor P Colditz,</b> <b>Dr M Mesbah,</b> <b>Professor B Boashash</b>
Kim, Min	PhD	Myocardial development in the preterm piglet	<b>Dr B Lingwood,</b> Dr A Boyce, Dr K Gibson
Kong, Fiona Yin Mei	PhD	Novel approaches to the surveillance of healthcare acquired infections	Dr A Clements, <b>Professor D Paterson,</b> A/Professor M Coory, A/Professor M Whitby
Lai, Foon	PhD	Occurence and fate of illicit drugs in Australian sewage treatment work	Professor J Mueller, Dr C Gartner, Dr C Ort

STUDENT	DEGREE	PROJECT	SUPERVISORS
Lim, Yi Chieh (Ernie)	PhD	Targetting gliomas'ES cells as a potential therapy for this tumor	<b>Professor M Lavin,</b> Dr R Woods
Lo, Ho Yan	PhD	Lifestyle and health variables in predicting white matter lesions and cognitive trajectory in ageing	A/Professor N Pachana, <b>A/Professor G Byrne,</b> Professor G Galloway
MacDonald, David	PhD	The morphology and behaviour of the lumbar paraspinal muscles in chronic low back pain	<b>Professor P Hodges,</b> Dr L Moseley
Malik, Neelam	PhD	Characterising the biologies of different compartments of the human breast epithelia: Implications for our understanding of different breast	<b>Professor S Lakhani,</b> <b>Dr C Smart</b>
Matheson, Sally	PhD	Mother and baby health outcomes in mothers taking SSRI / SNRI antidepressant medication in the third trimester of pregnancy	<b>A/Professor G Byrne</b>
McCook, Donna	PhD	An investigation into the effect of spinal manual therapy on the motor system and implications for neurophysiological mechanisms	<b>Professor P Hodges,</b> Professor G Vicenzino, Dr T Souvlis
Moxey, Nancy	PhD	The role of PLP in multiple sclerosis	<b>Dr J Greer,</b> Professor M Pender
Muller, Diane	PhD	Neuropathological and Neurophysiological Studies of the Central Nervous System of mice with Atypical Experimental Autoimmune Encephalomyelitis	<b>Dr J Greer</b>
Murphy, Jennifer	PhD	Treatment-resistant depression	<b>A/Professor G Byrne,</b> A/Professor N Pachana
Nguyen, Phan	PhD	Optical biopsy in lung medicine broncoscopy	Dr D Fielding, <b>A/Professor C Farah,</b> Dr I Masters
Oughton, Justin	PhD	The Relationship of Vascular Compliance to Cerebral White Matter Hyperintensities in a Community Based Sample of Aging Australian Women	<b>Dr S Rose,</b> Professor A Coulthard, Professor G Galloway
Patel, Bhavik	MPhil	Infections in hospitalised burns patients	<b>Professor D Paterson,</b> Professor J Lipman, Dr J Paratz
Patel, Jatin	PhD	Thyroid hormone transport in placenta	Dr K Richard, <b>Professor N Fisk</b>
Ramesh, Krishnan Narayanan	PhD	Genomic associated studies in MND	Dr Robyn Wallace, <b>A/Professor P McCombe</b>
Reinebrant, Hanna	PhD	The central serotonergic system in the preterm neonate following hypoxic-ischemic brain injury	<b>Dr K Buller,</b> <b>Professor P Colditz</b>
Robertus, Linda	PhD	The epidemiology of tuberculosis in Queensland as it relates to strategies to prevent transmission, particularly in indigenous Australians	<b>Professor D Paterson</b>
Ryan, Jennifer	PhD	Communication and dual diagnosis (Mental health and intellectual impairment)	Dr G Woodyatt, <b>A/Professor D Copland</b>



STUDENT	DEGREE	PROJECT	SUPERVISORS
Sa Ariwijaya, Mohd Shazrul	PhD	Substance abuse: A correlation between DNA damage to ageing	<b>Professor M Lavin,</b> Dr M Gatei
Sauer, Evan	PhD	Study of Potential Therapeutic Agents in Multiple Sclerosis	<b>Dr J Greer</b>
Schmid, Annina	PhD	Proximal and central pain mechanisms involved in carpal tunnel syndrome	Dr M Coppieters, A/Professor E McLachlan, <b>Professor P Hodges</b>
Siyambalapitya, Samantha	PhD	Language recovery and lexical semantic processing in bilingual aphasia	<b>A/Professor D Copland,</b> <b>Professor H Chenery</b>
Spearing, Natalie	PhD	A comparison of personal injury motor vehicle insurance schemes in Australia and their impact on health outcomes	A/Professor L Connelly, <b>Professor P Hodges</b>
Stafford, Ryan	MPhil	Is motor recovery related in clinical change	<b>Professor P Hodges</b>
Stubbs, Narelle	PhD	Epaxial musculature and its relationship with back pain in the horse	Dr C McGowan, <b>Professor P Hodges</b>
Tan, Kee	PhD	Neuronal voltage-gated potassium channel and voltage-gated sodium chanel autoimmunity	<b>Dr J Greer</b>
Van Hees, Sophie	PhD	Brain mechanisms of language treatment post-stroke	<b>A/Professor D Copland,</b> Dr A Angwin, Dr K McMahon
Vargas Calderon, Ana	PhD	Mechanisms of metastases in lobular carcinomas of breast	<b>Professor S Lakhani,</b> <b>Dr P Simpson</b>
Wallis, Adele	MPhil	An investigation of functional language outcomes for adults diagnosed with ADHD, after treatment with combined stimulant and anticonvulsion medication.	Dr W Arnott, <b>A/Professor D Copland</b>
Williams, Julian	PhD	The sepsis registry: a prospective database to characterise and facilitate improved outcome for admitted patients with community acquired infection	Professor J Lipman, <b>Professor D Paterson</b>
Winter, Craig	PhD	Investigation of blood-brain barrier function in acquired brain injury using MRI, SPECT and CNS-specific proteins	<b>A/Professor S Rose,</b> Professor A Coulthard
Wixey, Julie	PhD	The role of the seretonin transporter (SERT) after hypoxic-ischemic brain injury in the preterm neonate	<b>Dr K Buller,</b> <b>Dr S T Björkman</b>
Yamada, Miko	PhD	Mechanisms of cytoprotection by erythropoietin (EPO) in hypoxia/ischaemia-injured neonatal brain	A/Professor G Gobe, Professor D Johnson, <b>Professor P Colditz</b>

# APPENDIX SIX

## CLINICAL TRIALS 2010

UQCCR has an active engagement in Clinical Trials, in 2010 we hosted:

CLINICAL TRIAL	CHIEF INVESTIGATOR/S
Low Back Pain Sub-grouping study led by Nicholas Karayannis as part of his PhD studies. The purpose of this study is to investigate ways to improve the assessment of low back pain, in order to better guide treatment selection. Currently, there are several physiotherapy approaches and this study will determine how these different schemes relate to each other, to laboratory measures of trunk control and sensation, and to various psychological measures.	Professor Paul Hodges
Early intervention centred on infant massage performed by the mother in preterm infants: effects on neurodevelopment at the clinical, electrophysiological and neuroradiological level funded by the RBWH Foundation.	Dr Simon Finnegan, Professor Paul Colditz, Associate Professor Stephen Rose, Dr Andrea Guzzetta, Dr M Giulia D'Acunto, Dr Koa Whittingham, Naoni Ngenda, Sonia Sam and Penny Love
BOTOX purified neurotoxin complex in patients with urinary incontinence due to neurogenic detrusor overactivity, funded by Allergan Australia Pty Limited.	Professor Robert 'Frank' Gardiner
A randomised, single-blind, placebo-controlled study to investigate the safety, tolerability, immunogenicity, pharmacokinetics and pharmacodynamics of intravenous infusion of GSK933776 in patients with Alzheimer's disease, funded by GSK.	Associate Professor Gerard Byrne, Vicki Naumann and Liz Arnold
CONCERT: A Phase 3 Multicenter, Randomized, Placebo-Controlled, Double-Blind Twelve-Month Safety and Efficacy Study Evaluating Dimebon in Patients with Mild-to-Moderate Alzheimer's disease on Donepezil.  CONCERT PLUS: An Open-Label Extension of the CONCERT Protocol (DIM18) Evaluating Dimebon (Latrepirdine) in Patients with Alzheimer's Disease.  Both studies funded by Medivation Inc. and Pfizer Ltd.	Associate Professor Gerard Byrne, Vicki Naumann, Liz Arnold and Lyn Isabel.
A multinational, multicenter, randomized, double-blind, parallel-group, placebo-controlled study of the effect on cognitive performance, safety, and tolerability of SAR110894D for 24 weeks in patients with mild to moderate Alzheimer's Disease on stable Donepezil therapy, funded by Sanofi-Aventis.	Associate Professor Gerard Byrne, Vicki Naumann, Liz Arnold and Lyn Isabel.

# APPENDIX SEVEN

## STAFF LISTING 2010

### CENTRE DIRECTOR

Professor Murray Mitchell

### THEME LEADERS

Professor Paul Colditz  
Professor Robert ‘Frank’ Gardiner  
Professor Sunil Lakhani  
Professor Pamela McCombe  
Professor David Paterson  
Professor David Pow  
Professor Gregory Rice

### VISITING ACADEMICS

Dr Aminzadeh Zohreh  
Dr David Danon  
Dr Mahesh Choolani  
Dr Jerry Chan  
Professor Christine East  
Dr Maria D’Acunto  
Dr Andrea Guzzetta  
Dr Morisawa Kenichiro  
Professor Barbara Dodd  
Emeritus Professor Eugenie Lumbers  
Professor George Bou-Gharios  
Dr Elena Caro Martinez

### ASSOCIATE INVESTIGATORS

Associate Professor Gerard Byrne  
Professor Sandra Capra  
Professor Suzanne Chambers  
Professor Helen Chenery  
Dr Geoff Coughlin  
Dr Andrew Coulston  
Professor Paul Hodges  
Associate Professor Graeme Nimmo  
Professor David Reutens  
Associate Professor Philip Walker  
Dr Andreas Zankl

### RESEARCHERS

Professor Boualem Boashash  
Professor Nicholas Fisk  
Professor Wayne Hall  
Professor Martin Lavin  
Professor Peter Silburn  
Associate Professor David Copland  
Associate Professor Camile Farah  
Associate Professor Kiarash Khosrotehrani  
Associate Professor Jayne Lucke  
Associate Professor Stephen Rose  
Dr Ghasem Azemi  
Dr Effat Askarian-Amiri  
Dr Minyon Avent  
Dr Nigel Barnett  
Dr Nigel Bennett  
Dr Tracey Björkman  
Dr Kathryn Buller  
Dr Adrian Carter  
Dr Hsiu-Wen Chan  
Dr Yen-Shun Chen  
Dr Margaret Cummings  
Dr Andrew Dalley  
Dr Leonard Da Silva  
Dr Nadeeka Dissanayaka  
Dr Yvonne Eiby  
Dr Simon Finnigan  
Dr Coral Gartner  
Dr Judith Greer  
Dr Janelle Hancock  
Dr Julia Hocking  
Dr Anna Holmes  
Dr Zoe Ireland  
Dr Aven Lee  
Dr Barbara Lingwood  
Dr Mostefa Mesbah  
Dr Susan Millard  
Dr Leith Moxon-Lester  
Dr Khoa Nguyen  
Dr Phan Nguyen  
Dr Bradley Partridge  
Dr Rebecca Pelekanos  
Dr Allison Pettit  
Dr Liza-Jane Raggatt  
Dr Amy Reed  
Dr Tara Roberts  
Dr Mathieu Rodero  
Dr Christophe Rosty  
Dr Edwige Roy

### RESEARCHERS (CONTINUED)

Dr Jennifer Ryan  
Dr Jodi Saunus  
Dr Hanna Sidjabat  
Dr Anna Silvey  
Dr Peter Simpson  
Dr Chanel Smart  
Dr Susan Sullivan  
Dr Michael Ting  
Dr Ana Vargas Calderon  
Dr Vikram Vaska  
Dr Layne Wright  
Dr Jun Yan  
Dr Kong-Nan Zhao

### RESEARCH ASSISTANTS & TECHNICIANS

Ashley Anderson  
Claudia Agueron  
Stephanie Bell  
Susan Callan  
Sonia Dann  
Renae Deans  
Brooke Dougan  
Brenton Eiby  
Rebecca Ellis  
Lucy Gebbett  
Yoshiro Hayashi  
Samantha Hodgson  
Donna Hovey  
Hayley Inglis  
Lynette Isabel  
Jesuraj Jesuadian  
Simranpreet Kaur  
Lisha Keane  
Patricia Keith  
Misook Kim  
Annette Lane  
Maryrose Malt  
Rebecca Mathews  
Stephanie Miller  
Grant Newsome  
Nicole Newsome  
Shyuan Ngo  
Casey Pfluger  
Janani Jayanthan  
Lynne Reid  
Kristy Sanderson

### RESEARCH ASSISTANTS & TECHNICIANS (CONTINUED)

Liesl Sargeant  
Debina Sarkar  
Evan Sauer  
Betty Scells  
Elke Seppanen  
Rahul Shankar  
Sandra Stein  
Melissa Stevens  
Linda Teng  
Lisa Wang  
Guyan Weerasing  
Sarah Yeates  
Jordon Young

### ADMINISTRATION

Amanda Barnett  
Maxine Goulston  
Judi Herschell  
Emma Lee  
Brenda Mason

### CORE STAFF

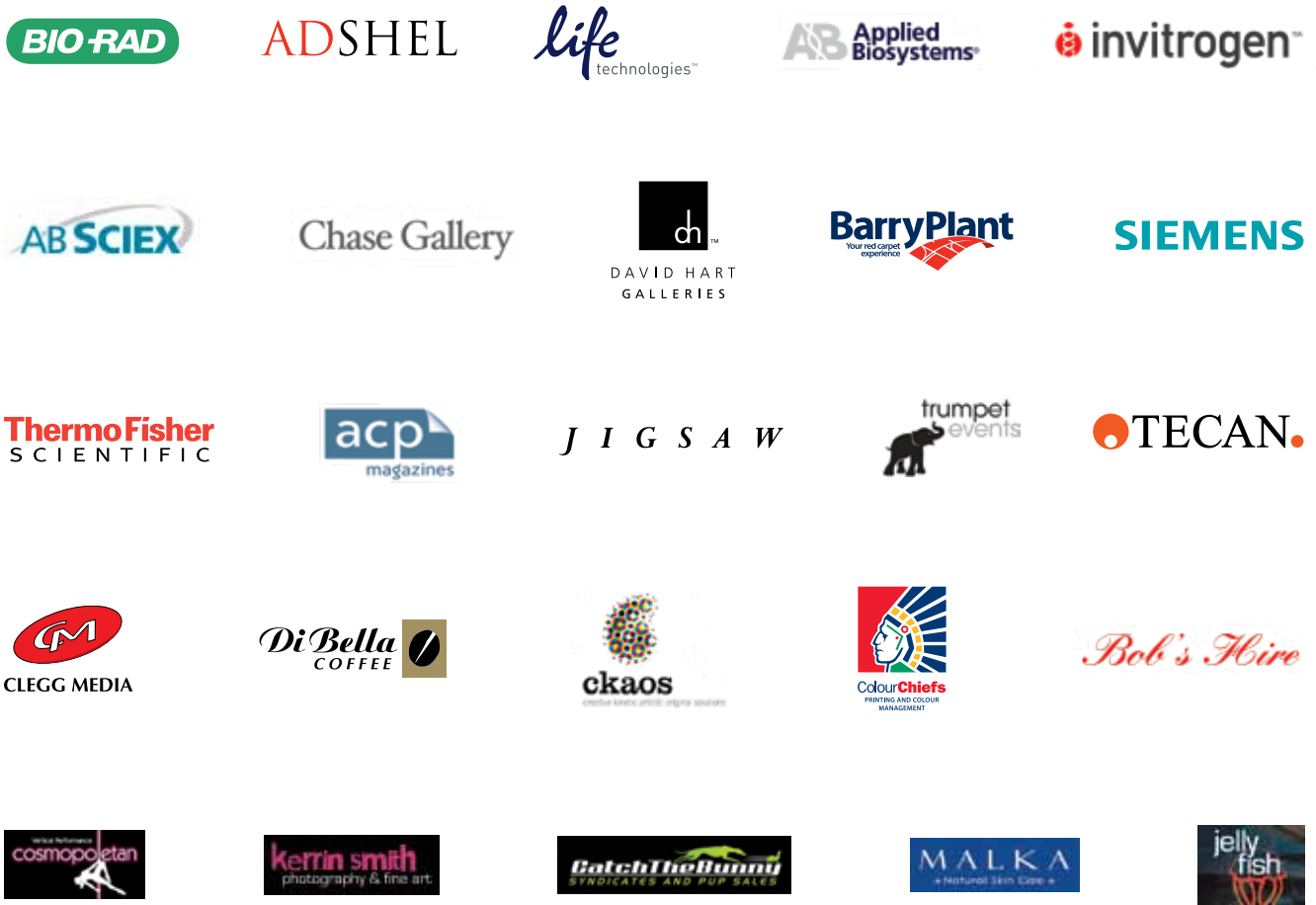
Vicki Allen  
Nancy Brown  
Carmen Buttery  
Paige Crawford  
Dr Luke Devitt  
Lisa Dingwall  
Monique Doyle  
Nick Emery  
Dr Tracey Henshaw  
Caroline Irle  
Deon Knight  
Linda McVann  
Ian Sawyer  
Kate Sullivan  
Brooke Tranent  
Greg Young

### PROPERTIES & FACILITIES

Ray Deller  
Alf Roset



THE UNIVERSITY OF QUEENSLAND CENTRE FOR CLINICAL RESEARCH AND THE ROYAL BRISBANE & WOMEN'S HOSPITAL FOUNDATION ACKNOWLEDGE WITH THANKS THE GENEROUS SUPPORT OF OUR "OVATION...CELEBRATING LIFE" EVENT SPONSORS AND SUPPORTERS.



THE UNIVERSITY OF QUEENSLAND CENTRE FOR CLINICAL RESEARCH ACKNOWLEDGES THE ROYAL BRISBANE & WOMEN'S HOSPITAL, QIAGEN AND MEDTRONICS FOR THE GENEROUS SUPPORT OF ACADEMIC CLINICAL HEALTH SCIENCE – PAST VICTORIES AND FUTURE CHALLENGES.

THE UNIVERSITY OF QUEENSLAND CENTRE FOR CLINICAL RESEARCH GRATEFULLY ACKNOWLEDGES THE QUEENSLAND GOVERNMENT SMART STATE INITIATIVE, ATLANTIC PHILANTHROPIES AND THE UNIVERSITY OF QUEENSLAND FOR GENEROUS FUNDING ENABLING THE BUILD AND START UP OF UQCCR.

THE UNIVERSITY OF QUEENSLAND CENTRE FOR CLINICAL RESEARCH

Building 71/918  
Royal Brisbane & Women's Hospital Campus  
Herston QLD 4029

**Telephone** +61 7 3346 5555  
**Facsimile** +61 7 3346 5509

information@uqccr.uq.edu.au  
www.uqccr.uq.edu.au



