



THE UNIVERSITY
OF QUEENSLAND
AUSTRALIA

Centre for
Clinical Research

2016

ANNUAL REPORT



RESEARCH THEMES



Brain and
Mental Health
p. 4



Cancer
p. 6



Infection and
Immunity
p. 8



Mothers, Babies and
Lifelong Health
p. 10



OUR OBJECTIVE

The primary objective **is to embed clinical research at the interface between the laboratory and the patient bed.**

As expressed by the Founding Director,

“UQCCR’s joint bench to bedside and bedside bench approach will be pivotal in bridging the gap between exponentially expanding by medical science and increasing complexity of healthcare. This will not only translate high quality medical research directly to the patient, but will also provide a ready avenue for clinicians to investigate research questions arising from patient care.

Our goals:

- *To foster innovation in clinical research*
- *To translate basic and applied research into more effective outcomes for patients*
- *To train translational researchers and clinical scientists*

In pursuing multidisciplinary research of the highest quality, the Centre will nurture a strong national and international research profile. We will both develop and evaluate Health and medical research, and thus informed policy, change practice and influence the behaviour of health care providers and governments, but ultimately improve health outcomes for consumers”.



Professor Greg Rice

MESSAGE FROM THE DIRECTOR

UQCCR's mission, as a purpose-built translational research facility, is instituted by the funding agreements between its founding partners. The Centre's mission, defined by the Head Agreement with the Queensland State Government (Schedule B) is to be "a leading edge clinical research facility linking laboratory science to patient care and outcomes and driving collaborative research in the field of health and medical research with clinical health providers".

The University of Queensland regards clinical sciences and experimental medicine as the heart of finding new and improved approaches for the detection, diagnosis, prevention and treatment of clinically-significant diseases and disabilities and in translating these new approaches into healthcare practice.

Since its opening in November 2007, UQCCR has developed a unique value proposition and identity in the clinical translational landscape in Queensland – being the only University Centre on the Herston Campus that provides a direct interface between research and clinical practice. The Centre has established on-site partnerships with leading clinical researchers within, for example, the School of Medicine (now the Clinical School), RBWH, Queensland Pathology, QFG and private practice.

Developing these clinical partnerships has been greatly facilitated by our dedicated outpatient floor and its clinical management team. Furthermore, because of its value proposition and clinical engagement, UQCCR was the preferred location for building the Herston Imaging Research Facility annex. HIRF opens a new pipeline for researcher-clinical engagement and with its new imaging applications for improving patient care (perhaps another indirect legacy of The Atlantic Philanthropies investment).

UQCCR is part of a network of University facilities that brings together researchers, clinicians, healthcare practitioners and service providers to develop cross-disciplinary knowledge platforms that inform clinical practice and policy and deliver innovative solutions to meet recognised healthcare needs. The clinical research network is integral to the nascent Brisbane Diamantina Health Partners and Mayne Health Alliance academic health sciences centres.

With the restructuring of the Faculty of Medicine, UQCCR's clinical and industry engagement has been enhanced with the relocation of the Burns Trauma and Critical Care Research Centre (Professors Jeffrey Lipman and Jason Roberts) into UQCCR and incorporation of the Centre for Integrated Preclinical Drug Development (Professor Maree Smith), respectively.

The following pages present some of the achievements and highlights that UQCCR staff have delivered during a time of significant change.

Professor Gregory E Rice

Acting Director, UQ Centre for Clinical Research

BRAIN AND MENTAL HEALTH

HIGHLIGHTS

- 01

Setting the Research Agenda for Childhood Bullying

A research agenda for childhood bullying.

Lancet Psychiatry. 2016; 3: E1-E2
- 02

The Global Burden of Diseases, Injuries, and Risk Factors Study

Global, regional, and national comparative risk assessment of 79 behavioural, environmental and occupational, and metabolic risks or clusters of risks, 1990–2015: a systematic analysis for the Global Burden of Disease Study 2015.

Lancet. 2016; 388: 1659-724

Global, regional, and national incidence, prevalence, and years lived with disability for 310 diseases and injuries, 1990–2015: a systematic analysis for the Global Burden of Disease Study 2015.

Lancet. 2016; 388: 1545-602

Addressing the burden of mental, neurological, and substance use disorders: key messages from Disease Control Priorities, 3rd edition.

Lancet. 2016; 387: 1672-85
- 03

ADHA - Cochrane Database of Systematic Reviews

Amphetamines for attention deficit hyperactivity disorder (ADHD) in children and adolescents.

Cochrane Database of Systematic Reviews. 2016; 2016
- 04

New test for aphasia

The development and accuracy testing of ComFit (TM), an iPhone application for individuals with aphasia.

Aphasiology. 2016; 30: 320-38. doi:10.1080/02687038.2015.1028329
- 05

Clinical Trial

Progress on COMPARE: A randomised controlled trial comparing constraint-induced and multi-modal aphasia therapy to usual care in people with chronic aphasia.

International Journal of Stroke. 2016; 11: 17-





IN THE MEDIA

Mental health researcher recognised for outstanding achievement

The Metro North Research Excellence Awards recognise and reward outstanding achievement in research across all clinical specialties and professions.

Associate Professor James Scott was recognised for his work in improving the mental health of Australian youth in the Promoting Healthy Minds and Bodies category.

Mental illness is the leading cause of morbidity in Australian youth.

Rates of youth mental illness remain stubbornly high and the outcomes for young Australians with severe disorders such as schizophrenia are not good.

Associate Professor Scott's research aims to prevent the onset of mental disorders, identify the underlying causes of schizophrenia and conduct clinical trials of low risk interventions for young people with early psychosis.

His clinical trial investigating schizophrenia has potential to make meaningful improvements to the lives of those living with the condition.

His work has been nationally and internationally recognised as having the potential to improve the mental health of young people across the world.

Stroke Patients - Electrical therapy offers promise

Patients experiencing communication problems after having a stroke could see long-term benefits from low-current electrical stimulation therapy, according to an international study led by UQCCR.

The therapy could revolutionise treatment for patients with aphasia, a common condition in those who have had a stroke, affecting the ability to speak, read, write and understand what others are saying.

Associate Professor Marcus Meinzer, said transcranial direct current stimulation was non-invasive and painless, and used a constant low current delivered to the brain via electrodes on the scalp.

"We worked with the Department of Neurology at the Charité University Hospital in Berlin, Germany, to test the benefits of transcranial direct current stimulation on stroke patients with aphasia," Associate Professor Meinzer said.

"To test the therapy, we compared the language ability and everyday communications skills of two groups of stroke patients with aphasia. The first group received language therapy combined with transcranial direct current stimulation, while the second group received language therapy alone."

He said the study showed for the first time that transcranial direct current stimulation could provide significant and lasting benefits for patients with chronic aphasia.

"While the therapy is commonly used in patients who have had a stroke, we have not had any evidence until now that transcranial stimulation has long-term benefits for patients with aphasia," Associate Professor Meinzer said.

The team found a way to make the treatment easier and less expensive for patients and doctors.

"Until now, it has been standard practice for doctors to perform expensive scans of patients' brains to see which areas need to be targeted for treatment," Associate Professor Meinzer said.

"We used a new approach, targeting just one area of the brain – the motor cortex – for therapy."

He said the motor cortex acted as a bridge to reach parts of the language cortex in the brain left undamaged by stroke.

"By stimulating the motor cortex, we were able to stimulate the undamaged language regions in the brain and facilitate the development of language in affected patients."

"This approach which may help a significant portion of patients with aphasia to further improve their language – months, or even years, after having a stroke."

CANCER

HIGHLIGHTS

- 01

World-first RTC on robotic vs open prostatectomy

Robot-assisted laparoscopic prostatectomy versus open radical retropubic prostatectomy: early outcomes from a randomised controlled phase 3 study. *Lancet*. 2016; 388: 1057-66. doi: 10.1016/s0140-6736(16)30592-x
- 02

Somatic mutations

Landscape of somatic mutations in 560 breast cancer whole-genome sequences *Nature*. 2016; 534: 47-+. doi: 10.1038/nature17676
- 03

Breast cancer genome

Breast cancer genome and transcriptome integration implicates specific mutational signatures with immune cell infiltration *Nature Communications*. 2016; 7: 12910.1-9. doi: 12910 10.1038/ncomms12910
- 04

New test for prostate cancer

Integrating molecular profiling of liquid biopsy samples with a calculator algorithm to detect high-risk prostate cancer. *Eur Urol*. 2016; 70: 749-50
- 05

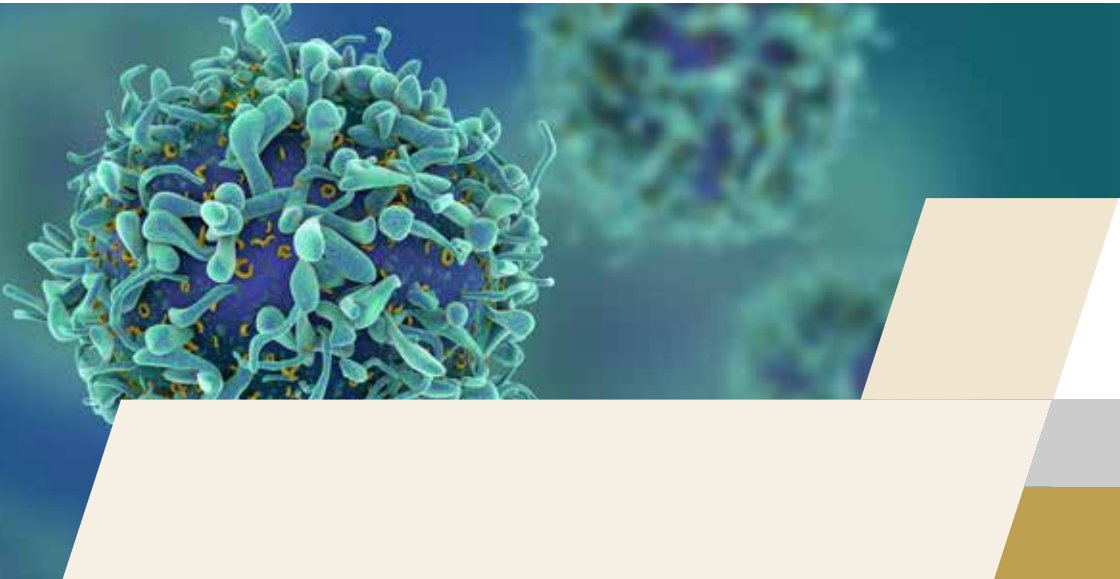
New test for aphasia

The development and accuracy testing of ComFit (TM), an iPhone application for individuals with aphasia. *Aphasiology*. 2016; 30: 320-38. doi:10.1080/02687038.2015.1028329
- 06

Clinical Trials in Cancer

The influence of exercise intensity on fatigue in colorectal cancer survivors: a randomized controlled trial. *Asia-Pac J Clin Onco*. 2016; 12: 78

Mindfulness-based cognitive therapy for men with advanced prostate cancer: A randomised controlled trial. *Psychooncology*. 2016; 25: 8





IN THE MEDIA

Research heavyweights join forces to combat breast cancer

Three of Queensland's leading breast cancer researchers joined forces in 2016 to lead a \$6.5 million National Health and Medical Research Council-funded program that is set to change the future of breast cancer diagnosis, prevention and treatment.

Professor Sunil Lakhani, who has appointments at UQ and Pathology Queensland, in partnership with Professors Georgia-Chenevix Trench and Kum Kum Khanna from QIMR Berghofer, looked for new ways to combat the condition which claims the lives of almost 3000 Australian women every year.

Professor Sunil Lakhani from the UQCCR said the team would focus on several key areas to enable more personalised treatment and better outcomes for those diagnosed with breast cancer.

"At the heart of our program is a strong desire to offer improved quality of life and more targeted treatments to beat the most common female cancer in Australia and worldwide," Professor Lakhani said.

"Our research seeks to understand who is most susceptible to breast cancer, the role that genes play in tumour development and behaviour, and why some types of breast cancer spread from the breast to other parts of the body.

"Armed with this knowledge, we will work to develop tools to prevent, diagnose and treat breast cancer, including those more aggressive, spreading forms."

Professor Lakhani said the research team was well-placed to achieve good outcomes, with strong collaborations and state-of-the-art facilities at its disposal.

"Our team is strengthened by new and established collaborations with many local, national and international researchers with varied expertise – they will assist us to resolve some of the key questions in our research," he said.

"We will also have access to samples from the Brisbane Breast Bank, a facility that collects fresh tissue donated by patients having breast surgery at the Royal Brisbane and Women's Hospital; and the Herston Imaging Research Facility for hi-tech medical imaging technologies not available anywhere else in Australia."

These resources will allow the team to quickly test new treatments and ensure that any successes can be quickly translated into clinical practice.

World first prostate cancer surgery trial

In 2016 a world-first randomised controlled trial found robotic keyhole surgery for prostate cancer is no more effective than open surgery for urinary control, erectile function and cancer outcomes at the early time-point of 12 weeks follow-up.

Professor Robert 'Frank' Gardiner AM said the trial of robotic and open prostatectomy at the Royal Brisbane and Women's Hospital examined outcomes for more than 300 Australian men for the 12 weeks after their surgery.

"Contrary to common clinical belief, our research found no significant statistical differences between the robotic approach and open surgery at this early time-point," Professor Gardiner said.

Prostatectomy is surgery to remove the prostate gland when cancer has been detected.

Robot-assisted prostatectomy surgery has been adopted by health professionals over the past 16 years.

"Surgery has long been the dominant approach for the treatment of localised prostate cancer, with many clinicians now recommending the robotic method to patients," Professor Gardiner said.

"Many clinicians claim the benefits of robotic technology lead to improved quality of life and oncological outcomes – but our randomised clinical trial found no statistical difference between the two groups at 12 weeks follow-up."

There was no difference between the groups in urinary and sexual function, and both required the same time in days away from work.

There was no significant difference in the number of post-operative complications from the two types of surgery.

The trial, funded by Cancer Council Queensland, involved the study team of Adjunct Professors Suzanne Chamber and Hema Samaratunga, Professors Martin Lavin and Frank Gardiner from the UQ Centre for Clinical Research, the Department of Urology at RBWH and the Menzies Health Institute Queensland, with support from the Urological Society of Australia and New Zealand.

INFECTION & IMMUNITY

HIGHLIGHTS

- 01

Infection disease - diagnosis and treatment

Further evidence to support the individualised treatment of gonorrhoea with ciprofloxacin.
Lancet Infect Dis. 2016; 16: 1005-6. doi: 10.1016/s1473-3099(16)30271-7

Antibiotic duration and timing of the switch from intravenous to oral route for bacterial infections in children: systematic review and guidelines.
Lancet Infectious Diseases. 2016; 16: E139-E52. doi: 10.1016/s1473-3099(16)30024-x
- 02

New diagnostic tests

Detection of carbapenemase activity in Enterobacteriaceae using LC-MS/MS in comparison with the neo-rapid CARS kit using direct visual assessment and colorimetry.
Journal of Microbiological Methods. 2016; 131: 68-72. doi: 10.1016/j.mimet.2016.10.005

A preliminary evaluation of a new GeneXpert (Gx) molecular point-of-care test for the detection of *Trichomonas vaginalis*.
Sexually Transmitted Infections. 2016; 92: 350-U117. doi: 10.1136/sex-trans-2015-052384

A novel point-of-care testing strategy for sexually transmitted infections among pregnant women in high-burden settings: results of a feasibility study in Papua New Guinea.
BMC Infectious Diseases. 2016; 16: 1-6

A real-time PCR assay for direct characterization of the *Neisseria gonorrhoeae* GyrA 91 locus associated with ciprofloxacin susceptibility.
Journal of Antimicrobial Chemotherapy. 2016; 71: 353-6. doi: 10.1093/jac/dkv366

Real-time PCR detection of *Neisseria gonorrhoeae* susceptibility to penicillin.
Journal of Antimicrobial Chemotherapy. 2016; 71: 3090-5. doi: 10.1093/jac/dkw291





IN THE MEDIA

UQCCR researcher made 'highly cited' list for 2016

Professor David Paterson was recognised as part of the prestigious Thomson Reuters Highly Cited Researchers List for 2016.

The annual list honours researchers who have assisted, inspired or challenged their peers and are cited 99% more often than other researchers in their area.

The list represents some of the world's most influential scientific minds, this year celebrating some 3,000 researchers across the globe.

Acting Executive Dean and Deputy Vice-Chancellor (Research) Professor Robyn Ward was thrilled for the researchers and said being named on the list is a clear sign that their research is cutting through.

"I extend a huge congratulations to the researchers listed this year, an honour that is testament to the quality of research being conducted across our Faculty," Professor Ward said.

"The hi-cite list acknowledges the work of our researchers and is a sign of the impact their work is having in their chosen field."

UQCCR researchers studies antibiotic duration in children - Lancet

In 2016 a pilot program aimed at stemming antibiotic resistance has successfully reduced prescribing rates among participating doctors.

The UQ led study involved more than 100 general practitioners from almost 30 practices across south east Queensland.

Chief Investigator Professor Charles Gilks from the UQ School of Public Health said there was a seven per cent reduction in the rates of antibiotic prescribing for respiratory conditions by those doctors who were given access to a package of intervention measures.

"The level of antibiotic prescribing for those GPs who did not receive the tool kit was the same or slightly higher than their previous rates," Professor Gilks said.

UQCCR's Dr Minyon Avent, a Specialist Clinical Research Pharmacist, was part of this study which has been published in The Lancet.

The study found doctors responded positively to having a variety of tools to communicate the problems of over-prescribing of antibiotics to patients, and to manage their expectations.

Australia is one of the highest users of antibiotics per person in the developed world, with around 22 million prescriptions written every year.

Antibiotics are often inappropriately prescribed for patients with acute respiratory tract infections.

MOTHERS, BABIES AND LIFELONG HEALTH

HIGHLIGHTS

- 01

Improving management of preterm Infants
Outcomes of two trials of oxygen-saturation targets in preterm infants.
New England Journal of Medicine. 2016; 374: 749-60

Early prediction of typical outcome and mild developmental delay for prioritisation of service delivery for very preterm and very low birthweight infants: a study protocol.
BMJ Open. 2016; 6: e010726. doi: 10.1136/bmjopen-2015-010726
- 02

Improving monitoring of pregnancy
Home monitoring of fasting and postprandial triglycerides in late pregnancy: A pilot study.
Diabetes Care 2016. 40(1):e1-e2

Placental biomarkers and angiogenic factors in oral fluids of patients with preeclampsia.
Prenat Diagn. 2016; 36: 476-82
- 03

Clinical Trial
PREMM: preterm early massage by the mother: protocol of a randomised controlled trial of massage therapy in very preterm infants.
BMC Pediatrics. 2016; 16. doi: 10.1186/s12887-016-0678-7





IN THE MEDIA

Fertility lab leader seeks key to 'good eggs'

In 2016 an international fertility expert hunting for the building blocks to "good eggs" brought his research to a new laboratory at UQCCR.

Professor Hayden Homer established the new UQ Oocyte Biology Laboratory, where he will drive research that could help women in their late thirties have children.

Female fertility declines with ageing due to a decline in the quality of the oocyte, the cell in the ovary which can become the ovum (or egg) ready for fertilisation.

"I aim to better understand the essential building blocks for making a good egg," Professor Homer said.

"This information is critical for understanding why it becomes increasingly difficult for eggs to produce healthy pregnancies as women get older, and for developing novel treatments that can help women in their late-thirties and beyond to have a family."

Infertility affects 1 in 6 couples of reproductive age in Australia.

"While in-vitro fertilisation (IVF) is a very effective option for many, it doesn't help everyone. Oocyte biology offers us another avenue of options to help couples to conceive."

Professor Homer is a clinician scientist, meaning he undertakes research alongside practice as a fertility specialist.

He holds the Christopher Chen Chair in Reproductive Biology and was previously co-director of The University of New South Wales' Oocyte Biology Research Unit.

Before moving to Australia in 2014, he was a senior lecturer and consultant sub-specialist in reproductive medicine at University College London (UCL) where he was clinical lead for IVF and recurrent miscarriage as well as academic lead for mammalian oocyte research within UCL's Institute for Women's Health.

Professor Homer held fellowships from WellBeing of Women (the research charity of the UK's Royal College of Obstetrics and Gynaecology) and the Wellcome Trust in the UK.

He has received numerous prizes and awards, including the prestigious Medical Research Society/Academy of Medical Sciences Young Investigator Award.

Professor Homer's work has led to new discoveries that have been published in the world's premier journals including: Science, Genes & Development, Nature Cell Biology, Development and Developmental Cell.

Finding new hope for patients with cardiovascular disease

The placenta, usually discarded after childbirth, can give life a second time around because it contains regenerative stem cells, in encouraging quantities. This offers hope for patients with cardiovascular disease.

In 2014, researchers from UQCCR started a study utilising stem cells from placenta, to isolate specialist vascular cells capable of regenerating new blood vessels.

When delivered, these cells greatly improved damaged limbs where blood flow is restricted. This situation called "critical limb ischemia" results in intense pain in patients and ultimately ulcers and limb loss by amputation.

The same team has dug deeper to understand how these stem cells work at the molecular level. They've found that to be a stem cell, a given cell needs a complex machinery preventing it from dividing too much in a state called quiescence.

"Tweaking that machinery allowed us to either keep the stem cells quiescent for long periods or to the contrary, released them from quiescence which resulted in their loss," said Dr Jatin Patel, National Heart Foundation Postdoctoral Research Fellow.

"This allows us to know and modulate how many true stem cell a given preparation contains before it is given to a patient.

"Our discovery of a slow dividing, quiescent vascular stem cell, provided two important pieces of information: firstly its long-term capacity to survive and secondly a lasting ability to expand to large quantities which is critically important when considering the clinical setting," said Dr Patel.

Placental tissue contains an abundance of specialist vascular stem cells, but problems with first, identifying them and second, isolating them in sufficient quantities for use in clinical treatment has been a challenge.

Clinical study leader Professor Kiarash Khosrotehrani said the discovery and ability to isolate specialist vascular stem cells can help reduce limb amputations, offer hope to cardiovascular disease patients and reduce the burden on our health system."

The outcomes of this study, published in the journal Stem Cells, will most certainly impact the future design of stem cell therapies in treating vascular disease.

High Impact **Publications**



1. Morganella S, Alexandrov LB, Glodzik D, Zou X, Davies H, Staaf J, Sieuwerts AM, Brinkman AB, Martin S, Ramakrishna M, Butler A, Kim H-Y, Borg A, Sotiriou C, Futreal PA, Campbell PJ, Span PN, Van Laere S, **Lakhani SR**, Eyfjord JE, Thompson AM, Stunnenberg HG, van de Vijver MJ, Martens JWM, Borresen-Dale A-L, Richardson AL, Kong G, Thomas G, Sale J, Rada C, Stratton MR, Birney E and Nik-Zainal S. The topography of mutational processes in breast cancer genomes. *Nature Communications* (IF 11.239). 2016; 7: 1-11. doi: 10.1038/ncomms11383
2. Nik-Zainal S, Davies H, Staaf J, ... **Simpson PT**, ... **Lakhani SR**, Eyfjord JE, Thompson AM, Birney E, Stunnenberg HG, Van De Vijver MJ, Martens JWM, Borresen-Dale AL, Richardson AL, Kong G, Thomas G and Stratton MR. Landscape of somatic mutations in 560 breast cancer whole-genome sequences. *Nature* (38.138). 2016; 534: 47-+. doi: 10.1038/nature17676
3. Smid M, Rodriguez-Gonzalez FG, Sieuwerts AM, ... **Simpson PT**, **Lakhani SR**, ... Martens JWM. Breast cancer genome and transcriptome integration implicates specific mutational signatures with immune cell infiltration. *Nature Communications* (IF 11.239). 2016; 7: 12910.1-9. doi: 10.1038/ncomms12910
4. Patel V, Chisholm D, Parikh R, Charlson FJ, Degenhardt L, Dua T, Ferrari AJ, Hyman S, Laxminarayan R, Levin C, Lund C, Medina Mora ME, Petersen I, **Scott JG**, Shidhaye R, Vijayakumar L, Thornicroft G, Whiteford H and Group obotDMA. Addressing the burden of mental, neurological, and substance use disorders: key messages from Disease Control Priorities, 3rd edition. *The Lancet* (IF 45.217). 2016; 387: 1672-85. doi: 10.1016/s0140-6736(15)00390-
5. **Paterson DL** and **Harris PNA**. Colistin resistance: a major breach in our last line of defence. *Lancet Infectious Diseases* (IF 21.37). 2016; 16: 132-3. doi: 10.1016/s1473-3099(15)00463-6
6. Sharma R, **Gartner CE** and **Hall WD**. The challenge of reducing smoking in people with serious mental illness. *Lancet Respiratory Medicine* (IF 15.238). 2016; 4: 835-44
7. **Trembizki E**, Guy R, Donovan B, Kaldor JM, Lahra MM and **Whiley DM**. Further evidence to support the individualised treatment of gonorrhoea with ciprofloxacin. *Lancet Infectious Diseases* (IF 21.37). 2016; 16: 1005-6. doi: 10.1016/s1473-3099(16)30271-7
8. Yaxley JW, Coughlin GD, **Chambers SK**, Occhipinti S, Samarasinghe H, Zajdlewicz L, Dunglison N, Carter R, Williams S, Payton DJ, Perry-Keene J, **Lavin MF** and **Gardiner RA**. Robot-assisted laparoscopic prostatectomy versus open radical retropubic prostatectomy: early outcomes from a randomised controlled phase 3 study. *The Lancet* (IF 45.217). 2016; 388: 1057-66. doi: 10.1016/s0140-6736(16)30592-x
9. Collaborators GRF, Charlson FJ, Ferrari AJ, Abajobir AA, **Erskine HE**, Knibbs LD, Leung J, Santomauro DF, Veerman JL, Whiteford HA, Lalloo R, **Scott JG**, Alam NKM, Gouda HN, Guo Y and McGrath JJ. Global, regional, and national comparative risk assessment of 79 behavioural, environmental and occupational, and metabolic risks or clusters of risks, 1990-2015: a systematic analysis for the Global Burden of Disease Study 2015. *The Lancet* (IF 45.217). 2016; 388: 1659-724
10. GBD Disease Injury Incidence Prevalence Collaborators, Charlson FJ, **Erskine HE**, Ferrari AJ, Leung J, Whiteford HA, Abajobir AA, Knibbs LD, Lalloo R, **Scott JG** and Guo Y. Global, regional, and national incidence, prevalence, and years lived with disability for 310 diseases and injuries, 1990-2015: a systematic analysis for the Global Burden of Disease Study 2015. *The Lancet* (IF 45.217). 2016; 388: 1545-602
11. Jo McMullan BJ, Andresen D, Blyth CC, **Avent ML**, Bowen AC, Britton PN, Clark JE, Cooper CM, Curtis N, Goeman E, Hazelton B, Haeusler GM, Khatami A, Newcombe JP, Oswick J, Palasanthiran P, Starr M, Lai T, Nourse C, Francis JR, Isaacs D and Bryant PA. Antibiotic duration and timing of the switch from intravenous to oral route for bacterial infections in children: systematic review and guidelines. *Lancet Infectious Diseases* (IF 21.37). 2016; 16: E139-E52. doi: 10.1016/s1473-3099(16)30024-x
12. Tarnow-Mordi W, Stenson B, Kirby A, Juszczak E, Donoghoe M, Deshpande S, Morley C, King A, Doyle LW, Fleck BW, Davis PG, Halliday HL, Hague W, Cairns P, Darlow BA, Fielder AR, Gebiski V, Marlow N, Simmer K, Tin W, Ghadge A, Williams C, Keech A, Wardle SP, Kecskes Z, Kluckow M, Gole G, Evans N, Malcolm G, Luig M, Wright I, Stack J, Tan K, **Pritchard M**, Gray PH, Morris S, Headley B, Dargaville P, Simes RJ and Brocklehurst P. Outcomes of two trials of oxygen-saturation targets in preterm infants. *New England Journal of Medicine* (IF 59.558). 2016; 374: 749-60
13. **Patel J**, Seppanen EJ, Roderio MP, Wong HY, Donovan P, Neufeld Z, **Fisk NM**, Francois M and **Khosrotehrani K**. Functional Definition of Progenitors Versus Mature Endothelial Cells Reveals Key SoxF-Dependent Differentiation Process. *Circulation*. 2016; 135: 786-805. doi: 10.1161/circulationaha.116.024754



Major Partners and **Linkages**

In addition to organisations and collaborators previously mentioned throughout this report, the UQ Centre for Clinical Research gratefully acknowledges the following national and international organisations which have contributed funding for research.

Alzheimer's Australia

Australian Cancer Research Foundation

Australian Research Council

Br-Ash-AT

Cancer Australia

Cancer Council Queensland

Children's Hospital Foundation

Clear thinking

Harcourts Foundation

Herston Imagin Research Facility

HIV Foundation Queensland

Innate Immuno therapeutics

LEO

Lions Australia

Lions Medical Research Foundation

Metro North Hospital and Health Service

MS Research Australia

NATA

National Breast Cancer Foundation

National Health and Medical Research Council

National Research Infrastructure for Australia

Pathology Queensland

Prostate Cancer Foundation of Australia

QIMR Berghofer Medical Research Institute

Queensland Government

RBWH Foundation

Rotary

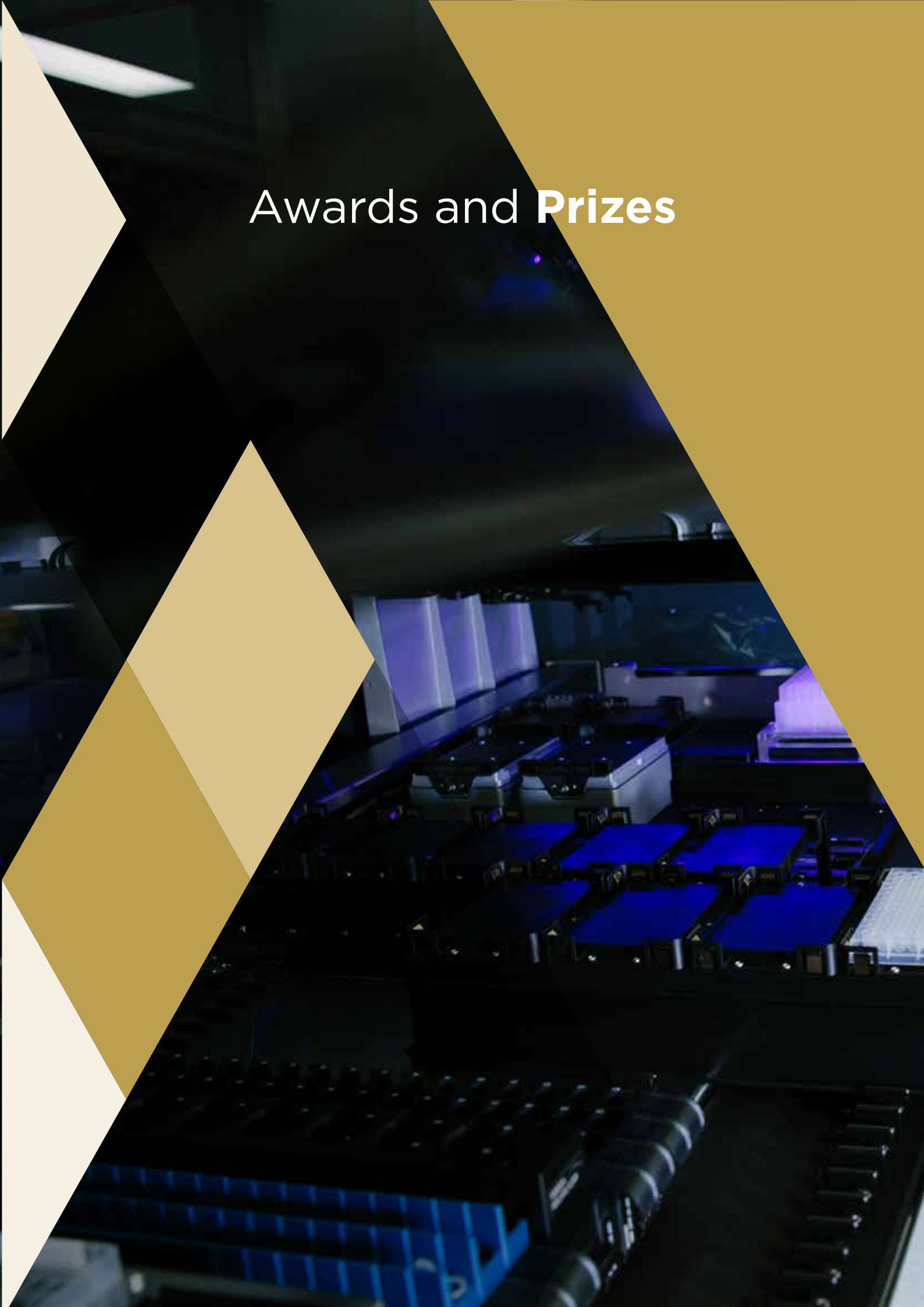
Siemens Healthineers

The Atlantic Philanthropies

Therapeutic Innovation Australia

Zonta international

Awards and **Prizes**



Dr Annice Kongs awarded \$3,000 for a Graduate School Travel Grant from the UQ Graduate School

Dr Zara Ioannides awarded a Oral Presentation Award at the Postgraduate Symposium at the School of Biomedical Sciences, UQ

Dr Shyuan Ngo awarded a Early Career Researcher Travel Grant from the CASS Foundation Postdoctoral

Dr Shyuan Ngo awarded a Queensland Young Tall Poppy Award from the Australian Institute of Policy and Science (AIPS)

Dr Shyuan Ngo awarded a Research Prize (Jury Award) at the World Science Festival Queensland Women in STEM

Dr Shyuan Ngo awarded a Research Prize (People's Choice Award) at the World Science Festival Queensland Women in STEM

Dr Frederik Steyn awarded \$10,000 for the Jenny and Graham Lang Collaboration Award from Motor Neuron Disease Research Institute of Australia (MNDRIA)

A/Professor James Scott awarded the University of Melbourne Beattie Smith Oration and was an invited presenter

A/Professor James Scott awarded the Metro North Health Service Research Excellence Award from Promoting Health Minds and Bodies

Dr Julie Wixey awarded the ANS Conference Travel Award from the UQ Centre for Clinical Research

Dr Marloes Dekker awarded the Graz Clock Award for Best Scientific Presentation from the Australian Diabetes in Pregnancy Society

Dr Marloes Dekker awarded the Andrew Phipps Award for Best Scientific Presentation from the Society for Obstetric Medicine Australia

Dr Patrick N Harris awarded \$25,000 Postgraduate Research Fellowship from the Royal College of Pathologists Australia

Professor Sunil Lakhani awarded the Robert Sutherland Award for Excellence in Translational Research from the Breast Cancer Institute of Australia/ Australian and New Zealand Breast Cancer Trials Group.

Professor Sunil Lakhani was a nominee for the UQ School of Medicine Research Leader's Award at the UQ School of Medicine Research Awards 2016

Dr Amy McCart Reed awarded a UQCCR Travel Award from UQ Centre for Clinical Research

Dr Jodi Saunus awarded a Nature Master Class, Travel Awards

Dr Hanna Sidjabat awarded a Pursuit of Excellence Award from the Faculty of Medicine

Dr Hanna Sidjabat awarded a Global Engagement Award from the Faculty of Medicine

Dr Hanna Sidjabat awarded a Research Excellence Award from Faculty of Medicine

Dr Hanna Sidjabat awarded a UQCCR Travel Award from UQ Centre for Clinical Research

Dr Hanna Sidjabat awarded a Faculty of Medicine Award for Excellence in Leadership and nominee for the UQ Awards for Excellence in Leadership



New grants awarded in 2016

Amount	Project Title	Granting Scheme	Investigator String
\$66,000	Placenta-derived exosome, a possible biomarker for early detection of gestational diabetes mellitus	Diabetes Australia Research Program	Salomon CF, Duncombe GH, Rice GE, Smith M & Rosser S
\$69,115	Improving brain function in healthy and stroke population by non-invasive brain stimulation	Queensland Emory Development Alliance	Meinzer M, Crosson B, & Breakspear M.
\$5,500	National Heart Foundation Collaboration and Exchange Award - The impact of vessel resident stem cells during atherogenesis	National Heart Foundation of Australia	Patel J
\$401,000	Enhancing Language Learning in Ageing With Exercise	ARC Discovery Projects	Copland DA, McMahon KL, Erickson K, Rodriguez A, & Coombes JS.
\$52,844	Glutamate transporters as potential targets of autoimmune attack in multiple sclerosis	National Multiple Sclerosis Society-US	Greer JM.
\$830,986	Investigating the aetiopathogenic role of autoantibodies against the M1 muscarinic acetylcholine receptor in patients with first episode of schizophrenia	NHMRC Project Grant	Greer JM, Mowry B, & Scott JG.
\$710,135	Predicting and Promoting Aphasia Recovery	NHMRC Project Grant	Copland DA, McMahon KL, Meinzer Marcus & De Zubicaray G.
\$580,983	In vitro diagnostic for first trimester risk assignment of gestational diabetes	NHMRC Development Grant	Rice GE, Salomon CF & Illanes S.
\$25,000	MicroRNA and proteomic signatures of tumour-derived exosomes as early diagnostic tool of ovarian cancer progression	UQ-Ochsner Seed Fund for Collaborative Research - DVCR funds	Salomon CF, Kline R & Rice GE.
\$44,000	Cognitive behaviour therapy for anxiety in Parkinson's disease: outcomes for patients and caregivers	Royal Brisbane and Women's Hospital Foundation	Dissanayaka N, Byrne GJ A, O'Sullivan, JD, Marsh RIM & Pachana NA.
\$44,000	Protecting growth restricted newborn brains by reducing inflammation	Royal Brisbane and Women's Hospital Foundation	Colditz PB, Wixey JA, Sullivan SM & Lai MM.
\$110,000	Metabolic and gut dynamics in MND: Identifying novel strategies to meet energy needs in patients	Motor Neurone Disease Research Institute of Australia Inc	Steyn FJ, McCombe PA, Henderson RD & Ngo S.
\$110,000	Using biomarkers to explore heterogeneity of motor neurone disease	Motor Neurone Disease Research Institute of Australia Inc	Henderson RD, McCombe PA & Wray N.
\$22,000	Emergence of antimicrobial resistance in bacteria associated with the use of antimicrobial impregnated dressings	Royal Brisbane and Women's Hospital	Paterson D, Rickard C, McMillan D, Choudhury M, Gavin N, Banu S, & Webster J.
\$31,768	Investigation of the role of oxidative stress in pulmonary disease in ataxia-telangiectasia	The A-T Children's Project	Lavin MF, Yeo AJ, Sly PD, Krause L & Sinclair K.
\$18,380	Typing isolates of Neisseria gonorrhoea	Cempra Pharmaceuticals, Inc.	Whiley DM
\$150,250	Investigating the role of oxidative stress in lung disease in ataxia-telangiectasia patients	BrAshA-T Ataxia-Telangiectasia Research Funding	Lavin MF
\$188,300	Resistance PCR collaborative project	SpeedX	Whiley DM



\$-	Determining the best outcome measures for assessing cost-effectiveness of interventions for childhood mental disorders (NHMRC Project Grant administered by Deakin University)	Deakin University	Scott JG, Mihalopoulos C, Richardson J, Viney R, Brazier J & Chen G.
\$7,773	Pharmacokinetic/Pharmacodynamic (PK/PD) analysis of antimicrobials in renal replacement therapy (RRT) and septic shock	University Hospital of Nîmes	Roberts JA & Lipman J.
\$15,000	Large scale production and purification of placental exosomes with clinical Good Manufacturing Practice (GMP)-grade for biomarker applications	UQ FirstLink Scheme	Salomon CF & Rice GE.
\$33,000	Does prostatic manipulation result in increased numbers and clusters of circulating tumour cells?	Royal Brisbane and Women's Hospital Foundation	Gardiner RA, Trau M, Yaxley J, Coughlin G, Gianduzzo T, Esler R, Dungleison N & Lavin MF.
\$45,000	Genome editing to correct A-T mutations using TALENS and CRISPR based genome editing technologies	BrAshA-T Ataxia-Telangiectasia Research Funding	Lavin MF
\$-	Extending the strategic importance of the Australian Breast Cancer Tissue Bank to facilitate breast cancer research (NBCF Infrastructure Grant administered by The University of Newcastle)	University of Newcastle	Simpson PT; Scott R, Balleine R, Clarke C, Dahlstrom J, Forbes J, Marsh D, Pathmanathan N, Yip D & Zeps N.
\$82,500	Mental Health and Neuroscience Theme	Brisbane Diamantina Health Partners - Metro South	Scott JG
\$54,964	Proposal for funding susceptibility testing of contemporary Australian isolates of Pseudomonas aeruginosa and extended-spectrum beta-lactamase-producing Escherichia coli and Klebsiella pneumoniae	Merck Sharp & Dohme Australia	Paterson D
\$44,000	Anti-neuronal antibodies in patients with treatment refractory psychotic disorders	Royal Brisbane and Women's Hospital	Scott JG, Gillis D, & Blum S.
\$12,067	ARLG Actavis CRE Study	Duke University	Paterson D
\$10,000	Identification of exosomal miRNA targets involved in drug resistance in ovarian cancer	Cancer Bequest Fund	Salomon CF
\$10,000	Re-evaluation of hypermetabolism and the assessment of endogenous adipose as a modifier of ALS/MND progression (MNDRIA Jenny & Graham Lang Collaboration Travel Grant 2016)	Motor Neurone Disease Research Institute of Australia Inc.	Steyn FJ
\$11,000	The acquired resistome of Pseudomonas aeruginosa strains in people with cystic fibrosis (Joint UQ/QIMR AID seed grant awarded to QIMRB)	Queensland Institute of Medical Research	Sidjabat H
\$334,258	Prevention and Management of Youth Mental Illness	NHMRC Practitioner Fellowships	Scott, JG
\$450,000	Tumour-derived exosome, a possible biomarker for the early detection of ovarian cancer	Lions Medical Research Foundation	Salomon CF
\$470,143	Gonorrhoea: detection, antimicrobial resistance and treatment.	NHMRC Career Development Fellowship	Whiley DM
\$278,181	Translational dermatology in skin and skin cancer research	UQ Fellowships	Khosrotehrani K, Soyer PH & Paterson D.
\$5,318,147			

Research Publications in 2016

Book/ Book Sections 2016

1. Amin MG, Lindsey AR, Sayeed AM, Barbarossa S, Tsitsvero M, Akay O, Boudreaux-Bartels GF, Sha'ameri AZ and **Boashash B**. Time-frequency methods in communications. In: **Boashash B**, (ed.). Time-frequency signal analysis and processing: a comprehensive reference. 2nd ed. Amsterdam, Netherlands: Academic Press, 2016, p. 747-91.
2. **Bjorkman ST**. Origin and Detection of Neonatal Seizures: Animal and Clinical Studies. In: Walker DW, (ed.). Prenatal and Postnatal Determinants of Development. 2016, p. 343-58.
3. **Boashash B**. Getting started with a practical and efficient time-frequency toolbox TFSAP-7.0. In: **Boashash B**, (ed.). Time-frequency signal analysis and processing: a comprehensive reference. Second edition ed. London, United Kingdom: Academic Press, 2016, p. 967-88.
4. **Boashash B**. Theory and design of high-resolution quadratic TFDs. In: **Boashash B**, (ed.). Time-frequency signal analysis and processing: a comprehensive reference. 2nd ed. Amsterdam, Netherlands: Elsevier, 2016, p. 103-37.
5. **Boashash B**. The time-frequency approach: essence and terminology. In: **Boashash B**, (ed.). Time-frequency signal analysis and processing: a comprehensive reference. 2nd ed. Amsterdam, Netherlands: Academic Press, 2016, p. 3-29.
6. **Boashash B**. Time-frequency and instantaneous frequency concepts. In: **Boashash B**, (ed.). Time-frequency signal analysis and processing: a comprehensive reference. Second edition ed. Amsterdam, Netherlands: Academic Press, 2016, p. 31-63.
7. **Boashash B**, Ali S, Amin MG, Zhang YD, Abed-Meraim K, Belouchrani A, Leyman AR, Linh-Trung N, Abed-Meraim K and Aissa-El-Bey A. Multisensor, multichannel, and time-space processing. In: **Boashash B**, (ed.). Time-frequency signal analysis and processing: a comprehensive reference. Second edition ed. Amsterdam, Netherlands: Academic Press, 2016, p. 453-518.
8. **Boashash B**, Putland GR, Stankovic LJ, Bastiaans MJ, Van Leest AJ, Williams WJ, Aviyente S, Putland GR and O'Toole JM. Advanced implementation and realization of TFDs. In: **Boashash B**, (ed.). Time-frequency signal analysis and processing: a comprehensive reference. Second edition ed. Amsterdam, Netherlands: Academic Press, 2016, p. 331-85.
9. **Boashash B**, Stevenson NJ, Rankine LJ, Stevenson NJ, Azemi G, Sejdic E, Aviyente S, Akan A, Mert A, Dong S, Omidvarnia A, Zarjam P, O'Toole JM and **Colditz PB**. Time-frequency methodologies in neurosciences. Time-frequency signal analysis and processing: a comprehensive reference. Second edition ed. Amsterdam, Netherlands: Academic Press, 2016, p. 915-66.
10. **Boashash B**, Touati S, Auger F, Flandrin P, Chassande-Mottin E, Stankovic LJ, Sucic V, Khan N, Sejdic E, Sucic V, Saulig N, Shafi I, Ahmad J and Shah SI. Measures, performance assessment, and enhancement of TFDs. In: **Boashash B**, (ed.). Time-frequency signal analysis and processing: a comprehensive reference. Second edition ed. London, United Kingdom: Academic Press, 2016, p. 387-452.
11. **Carter A**, Hendrikse J, Lee N, Yucel M, Verdejo-Garcia A, Andrews Z and **Hall W**. The Neurobiology of "Food Addiction" and Its Implications for Obesity Treatment and Policy. In: Stover PJ, (ed.). Annual Review of Nutrition, Vol 36. 2016, p. 105-28.
12. El-Jaroudi A, Emresoy MK, Stankovic LJ, Hussain ZM, **Boashash B**, O'Shea PJ, Barkat B, Sucic V, Lerga J, Rankine LJ, Djurovic I, Simeunovic M, Djukanovic S and Ristic B. Instantaneous frequency estimation and localization. In: **Boashash B**, (ed.). Time-frequency signal analysis and processing: a comprehensive reference. Second edition ed. Amsterdam, Netherlands: Academic Press, 2016, p. 575-635.
13. Fitzgerald J and **Byrne GJ** (eds). Psychosocial dimensions of medicine. Melbourne, Australia: IP Communications, 2016.
14. Flandrin P, Williams WJ, Baraniuk RG, Jones DL, Putland GR, Papandreou-Suppappola A, **Boashash B**, Xia X-G, Jawad BK, Khan NA, Khan NA, Sejdic E, Assous S and Ventosa S. Advanced design and specifications of TFDs. In: **Boashash B**, (ed.). Time-frequency signal analysis and processing: a comprehensive reference. Second edition ed. London, United Kingdom: Academic Press, 2016, p. 237-327.
15. Graham ME, **Lavin MF**, **Kozlov SV**. Identification of ATM protein kinase phosphorylation sites by mass spectrometry in **Kozlov SV** (ed.) ATM Kinase Methods in Molecular Biology protocol series, Springer, NY, 2017
16. Hlawatsch F, Matz G, **Boashash B**, Ouelha S, Stankovic S and Hassanpour H. Time-frequency synthesis and filtering. In: **Boashash B**, (ed.). Time-frequency signal analysis and processing: a comprehensive reference. Second edition ed. Amsterdam, Netherlands: Academic Press, 2016, p. 637-91.
17. **Harris PNA** and Peleg AY. Meropenem and Meropenem/vaborbactam chapter in Kucers' The Use of Antibiotics, 7th Edition, (Editor Grayson L). In press.
18. Jensen C, Partridge B, **Forlini C**, **Hall W** and Lucke J. Cognitive enhancement down under: an Australian perspective. In: Fabrice J and Veljko D, (eds.). Cognitive Enhancement: Ethical and Policy Implications in International Perspectives. New York, United States: Oxford University Press, 2016, p. 147-58.
19. **Kijas AW** and **Lavin MF**. Assaying for Radioresistant DNA synthesis, the hallmark feature of the Intra-S-Phase Checkpoint using a DNA fiber Fluorography based methodology. In: **Kozlov SV** (ed.) ATM Kinase Methods in Molecular Biology protocol series, Springer, NY, 2017.
20. **Meinzer M**, Ulm L, and Linderberg R. Biological markers of aphasia recovery Oxford Handbook of Aphasia and Language Disorders 2016, p. 1-17.
21. Marple SL, Barbarossa S, Ferguson BG, Lo KW, Frazer GJ, **Boashash B**, Chandran V, Gholami A and Ouelha S. Time-frequency methods in radar, sonar, and acoustics. In: **Boashash B**, (ed.). Time-frequency signal analysis and processing: a comprehensive reference. Second edition ed. Amsterdam, Netherlands: Academic Press, 2016, p. 793-856.
22. Nayler S, **Kozlov SV**, **Lavin MF** and Wolvetang E. Lentiviral reprogramming of A-T patient fibroblasts to induced pluripotent stem cells in **Kozlov SV** (ed.) ATM Kinase Methods in Molecular Biology protocol series, Springer, NY, 2017.
23. Powers EJ, Shin Y-J, Mack Grady W, Bohme JF, Carstens-Behrens S, Papandreou-Suppappola A, Hlawatsch F, Boudreaux-Bartels GF, Beghdadi A, Iordache R, **Boashash B**, Djebbari A, Ouelha S and Onchis DM. Time-frequency diagnosis, condition monitoring, and fault detection. In: **Boashash B**, (ed.). Time-frequency signal analysis and processing: a comprehensive reference. Second edition



- ed. Amsterdam, Netherlands: Academic Press, 2016, p. 857-913.
24. Sayeed AM, Papandreou-Suppappola A, Suppappola SB, Xia X-G, Hlawatsch F, Matz G, **Boashash B**, Azemi G and Khan NA. Detection, classification, and estimation in the (t,f) domain. In: **Boashash B**, (ed.). Time-frequency signal analysis and processing: a comprehensive reference. Second edition ed. Amsterdam, Netherlands: Academic Press, 2016, p. 693-743.
 25. Sim SYM, **Simpson PT**, **Cummings MC** and **Lakhani SR**. Future role of molecular profiling in small breast samples and personalized medicine. In: Sandra JS, (ed.). A comprehensive guide to core needle biopsies of the breast. Cham, Switzerland: Springer, 2016, p. 803-17
 26. Stewart R, Wali G, Perry C, **Lavin MF**, Féron F, **Mackay-Sim A** and Sutharsan R. A Patient-specific stem cell model to investigate the neurological phenotype observed in Ataxia telangiectasia in Kozlov SV(ed.). ATM Kinase Methods in Molecular Biology protocol series, Springer, NY, 2017
- ## Conference Papers 2016
1. Abdul Rahim N, Cheah S-E, Zhu Y, Johnson MD, Boyce J, Yu HH, Sidjabat HE, Butler MS, Cooper MA, Paterson DL, Fu J, Nation RL, Creek DJ, Bergen PJ, Velkov T, Li J. Integrative analysis of multi-omics using metabolic network reveals the mechanisms of synergistic killing of polymyxin B (PMB) and chloramphenicol (CHL) combination against an NDM-producing *Klebsiella pneumoniae* (Kp) isolate. Abstract No. 4070. European Congress for Clinical Microbiology and Infectious Diseases. 9-12 April 2015. Amsterdam, the Netherlands.
 2. Almomammadi D, Scholz-Romero K, Duncombe G, Rice GE and Salomon C. Oxygen, Glucose and Insulin Modulate the Expression of miRNAs from Chromosome 19 Cluster in Trophoblast Cells and Exosomes. 63rd Annual Scientific Meeting of the Society-for-Reproductive-Investigation. Montreal Canada 2016, p. 156A-A.
 3. Blaskovich M, Hansford K, Ziora Z, Lindahl F, Butler M, Karoli T, Elliott A, Ramu S, Kavanagh A, Jarrad A, Da Silva A, Huang JX, Zuegg J, Muldoon C, Pelingon R, Edwards D, Paterson DL, Roberts J, Sidjabat HE, Cooper M. Glycopeptide derivatives with potent activity against multidrug-resistant pathogenic bacteria. Abstract No. 0081. European Congress for Clinical Microbiology and Infectious Diseases. 25-28 April 2015. Copenhagen, Denmark.
 4. Chand KK, Goasdoue K, Miller SM, Colditz PB, Bjorkman ST. Hypoxic ischemic brain injury activates inflammatory and apoptotic pathways in the neonate pig model. (ANS, Hobart 2016)
 5. Chand KK, Goasdoue K, Miller SM, Colditz PB, Bjorkman ST. Expression of inflammatory mediators after hypoxic-ischemic brain injury in a neonatal pig model. (FNWANZ, Magnetic Island 2016)
 6. Chand KK, Goasdoue K, Miller SM, Colditz PB, Bjorkman ST. Expression of inflammatory mediators after hypoxic-ischemic brain injury in a neonatal pig model (QPACT, Brisbane 2016)
 7. Dixit A, Donnelly S, Lund MA, Dalton JP and Greer JM. Protection against development of a mouse model of multiple sclerosis by a parasite-derived 68-mer peptide. ICI 2016 International Congress of Immunology. Melbourne, Australia 2016, p. 1042-.
 8. Eiby Y, Bjorkman ST, Wixey JA, Chand KK, Colditz PB and Lingwood B. Pilot trial of early blood transfusions for supporting cardiovascular function and cerebral oxygen delivery in preterm piglets. 30th Annual meeting Fetal and Neonatal Workshop of Australia and New Zealand. Magnetic Island, QLD, Australia 2016.
 9. Elfeky O, Longo S, Rice GE and Salomon C. The relationship between maternal body mass index and exosomal concentration across gestation. Meeting of the International Federation of Placenta Associations (IFPA) - Placenta - Back to the Basics. Portland, United States 2016, p. 109-10.
 10. Elfeky O, Scholz-Romero K, Duncombe G, Rice GE, Longo S and Salomon C. A Pilot Study Exploring the Impact of Maternal Body Mass Index on the Exosomal Profile Across Gestation. 63rd Annual Scientific Meeting of the Society-for-Reproductive-Investigation. Montreal Canada 2016, p. 286A-A.
 11. Fielder M, Colditz PB, Bjorkman ST. Carbonic anhydrase VII expression in hypoxic ischaemic encephalopathy. (ANS, Hobart 2016)
 12. Goasdoue K, Miller SM, Chand KK, Wixey JA, Colditz PB and Bjorkman ST. Investigation of the impact of seizures on disruption to the blood-brain barrier following neonatal hypoxia-ischaemia. Queensland Perinatal Consortium. Brisbane, Queensland, Australia: University of Queensland 2016.
 13. Goasdoue K, Miller SM, Chand KK, Wixey JA, Colditz PB, Bjorkman ST. A proposed study for investigation of the blood-brain barrier in neonatal seizures and hypoxic ischaemic encephalopathy. (FNWANZ, Magnetic Island 2016)
 14. Greer JM, Muller DM, Beasley SJ, Trifilieff E and Pender MP. Functional effects of antibodies specific for myelin proteolipid protein in multiple sclerosis. ICI 2016 International Congress of Immunology. Melbourne, Australia 2016, p. 164-.
 15. Kinhal V, Guanzon D, Scholz-Romero K, Longo S, Fortunato S, Menon R, Rice GE and Salomon C. Identification of exosomal miRNA biomarkers at early gestation (< 18 Weeks) in asymptomatic women at early gestation (< 18 Weeks) who subsequently develop spontaneous preterm birth. Meeting of the International Federation of Placenta Associations (IFPA) - Placenta - Back to the Basics. Portland, United States 2016, p. 125-.
 16. Kinhal V, Scholz-Romero K, Elfeky O, Rice GE and Salomon C. Characterisation of extravillous trophoblast-derived exosomal protein content in response to hypoxia. Meeting of the International Federation of Placenta Associations (IFPA) - Placenta - Back to the Basics. Portland, United States 2016, p. 122-.
 17. Kong A, et al. Early EEG markers may inform prognostication of cognitive outcomes in very preterm infants. 16th International Child Neurology Congress, Amsterdam, 2016. Developmental Medicine & Child Neurology.
 18. Lal S, McCart Reed AE, Nones K, Leesa W, Song S, Waddell N, Lakhani S and Simpson PT. An integrative analysis of invasive lobular breast cancer. Lorne Cancer Conference. Lorne VIC, Australia 2016.
 19. Menon R, Sheller S, Saade G and Salomon C. Oxidative stress induced amnion cell derived exosomes produce inflammatory changes in myometrial cells: a fetomaternal signaling in human parturition. Meeting of the International Federation of Placenta Associations (IFPA) - Placenta - Back to the Basics. Portland, United States 2016, p. 111-2.
 20. Miller SM, Colditz PB, Bjorkman ST. Differential expression

of GABAA receptor $\alpha 1$, $\alpha 2$ and $\alpha 3$ subunit in subcellular fractions (ANS, Hobart 2016)

21. Miller SM, Sullivan SM, Ireland Z, Chand KK, Colditz PB, Bjorkman ST. Hypoxia-induced neonatal seizures are independently associated with reduced GABAA receptor $\alpha 3$ subunit expression. (FNWANZ, Magnetic Island 2016)

22. Miller SM, Sullivan SM, Ireland Z, Colditz PB, Bjorkman ST. Hypoxia-induced neonatal seizures are independently associated with reduced GABAA $\alpha 3$ subunit expression (QPACT, Brisbane 2016)

23. Miller SM, Pelly S, Kalanjati VP, Colditz PB, Bjorkman ST. Identification and expression of a unique neonatal variant of the GABAA receptor $\alpha 3$ subunit. (RBWH Symposium, Brisbane 2016)

24. Pelly S, Miller SM, Kalanjati VP, Colditz PB, Bjorkman ST. Identification of a unique GABAA receptor $\alpha 3$ subunit splice variant. (ANS, Hobart 2016)

25. Perera M, Divakumar P, Roberts M and Chung E. Randomised trial comparing suture techniques and types of urinary catheters in vesicourethral anastomotic tensile strength: a porcine model. 69th Annual Scientific Meeting of the Urological Society of Australia and New Zealand. Gold Coast, Australia 2016, p. 60-.

26. Quek H, Luff J, Cheung K, Kozlov SV, Gatei M, Lee CS, Bellingham M, Noakes P, Lim YC, Barnett N, Dingwall S, Wolvetang E, Mashimo T, Roberts T and Lavin MF. Neuroinflammation drives the neuronal degenerative phenotype in a rat model of Ataxia-telangiectasia. International Congress of Immunology (ICI). Melbourne, Australia 2016, p. 1041-2.

27. Ramin C, Nitert MD, Callaway LK and Barrett HL. Expression of hexosamine signaling pathway genes in placentae from women with gestational diabetes mellitus (GDM). Annual Scientific Meeting of the Endocrine-Society-of-Australia. Adelaide Australia 2016, p. 24-.

28. Roberts M, Chow C, Schirra H, Richards R, Buck M, Doi S, Samaratunga H, Yaxley J, Lavin MF and Gardiner RA. A new prostate-based biofluid for the detection of prostate cancer and diagnostic performance comparison using mRNA biomarkers. 69th Annual Scientific Meeting of the Urological-Society-of-Australia-and-New Zealand. Gold Coast, Australia 2016, p. 50-1.

29. Roberts MJ, Richards R, Chow CWK, Schirra H, Buck M, Selth LA, Doi SA, Samaratunga H, Perry-Keene J, Payton D, Yaxley J, Lavin MF and Gardiner RA. Prostatic fluid mRNA and microRNA biomarkers: an emerging paradigm for noninvasive diagnosis of prostate cancer. ANZUP Annual Scientific Meeting, GU Cancer: Expanding our Horizons. Brisbane, QLD Australia 2016, p. 41-.

30. Rose M, Nickels L, Togher L, Meinzer M, Rai T, Godecke E, Kim J, Cadilhac D, Pierce J, Foster A, Hurley M and Copland DA. Progress on COMPARE: a randomised controlled trial comparing constraint-induced and multi-modal aphasia therapy to usual care in people with chronic aphasia. SMART STROKES 2016 Conference. Canberra, ACT, Australia 2016, p. 17-.

31. Rowe C, Tang F, Hughes MC, Rodero M, Malt M, Lambie D, Barbour A, Hayward N, Smithers BM, Green A and Khosrotehrani K. Prognostic value of nomograms incorporating biomarkers vs. sentinel node status in patients with stage IB and II melanoma. Australasian College of Dermatologists 49th Annual Scientific Meeting. Perth, Australia 2016, p. 3-.

32. Salomon C, Guanzon D, Rice GE and Lappas M. Characterization of exosomal mirnas present in plasma from women with gestational diabetes mellitus. Meeting of the International Federation of Placenta Associations (IFPA) - Placenta - Back to the Basics. Portland, United States 2016, p. 68-.

33. Schleiger E, Rowland T, Wong A, Read S and Finnigan S. Informing prognostication of post-stroke cognitive impairment: the accuracy of a pre-sischarge EEG marker. Asia Pacific Stroke Conference 2016. Brisbane, Australia 2016, p. 149-.

34. Scott JG, Connell M, Betts K, Alati R, Najman J, Clavarino A, Mamun A and McGrath JJ. Hallucinations in Adolescents and Risk for Mental Disorders in Adulthood: Prospective Evidence From the Musp Birth Cohort Study. *. 2016, p. 129-.

35. Scott JG, Gillis D, Hargovan H, Gundarpi N, Ryan A, Prain K, Newman M, Wong R R, Parry P and Blum S. The Prevalence of Autoimmune Encephalitis in Patients Presenting with First-Episode Psychosis. *. 2016, p. 128-.

36. Sidjabat HE, Cottrell K, Flohr G, Kitipornchai L, Hawarden B, Cervin A. Diverse bacterial species in the microbiome of upper respiratory tract of patients with chronic rhinosinusitis and healthy participants. 2016. Abstract No 359, Australian Society for Microbiology Annual Scientific Meeting, Perth, Australia, 3-6 July 2016.

37. Sidjabat HE, Cottrell K, Lim XY, Tambunan JP, Coleman A, Wood A, Flohr G, Brown M, Cervin A. Diversity of Haemophilus influenzae and Haemophilus parainfluenzae amongst Australian indigenous children characterised using MALDI-TOF. 2016. Abstract No 255, Australian Society for Microbiology, Perth, Australia, 3-6 July 2016.

38. Sinclair HA, Sidjabat HE, Paterson DL, Nimmo GR, Heney C. Clinical infection due to Aeromonas species, a snapshot of the burden of Aeromonas infection in Queensland, Australia. International Congress for Tropical Medicine and Malaria. Brisbane, Australia, 18-22 October 2016.

39. Steyn F. Regulation of pulsatile growth hormone secretion: lessons from the mouse. Annual Scientific Meeting of the Endocrine Society of Australia. Adelaide, Australia 2016, p. 16-7.

40. Townell N, Hamilton B, Sidjabat HE, Wallis T, Griffin P, Schooneveldt J, Venter D, Schlebusch SM. Detection of beta-lactam resistance in Enterobacteriaceae using the MALDI-TOF MS. Australian Society for Microbiology. Melbourne, 25-27 February 2016.

41. Wailan A, Sartor D, Paterson DL, Perry J, Sidjabat HE. The genetic analysis of various NDM-producing Gram-negatives to investigate the inter-species and inter-patient transmission of blaNDM within a clinical setting. Abstract No. P1310. European Congress for Clinical Microbiology and Infectious Diseases. 25-28 April 2015. Copenhagen, Denmark.

42. Wixey JA, Muller C, Chand KK, Sullivan S, Colditz PB and Bjorkman ST. Neuroinflammatory response in the growth restricted neonate. Australasian Neuroscience Society Annual Scientific Meeting. Hobart, TAS, Australia 2016.

43. Wixey JA, Muller C, Sullivan S, Colditz PB and Bjorkman ST. Inflammation, microglial and astrocyte response in the intrauterine growth restricted neonatal brain. 25th Annual RBWH Health Care Symposium. Herston, QLD, Australia 2016.

44. Wixey JA, Muller C, Chand KK, Miller SM, Colditz PB, Bjorkman ST. Inflammatory response in the growth restricted neonatal brain. (ANS, Hobart 2016)

45. Wixey JA, Muller C, Chand KK, Sullivan SM, Colditz PB and Bjorkman ST. Inflammation, microglial and astrocyte response in the intrauterine growth restricted neonatal brain. (RBWH Symposium, Brisbane 2016)

46. Wood A, Coleman A, Adams J, Ferguson J, Sidjabat HE, Bialasiewicz S, Cervin A, Brown M. Overcoming challenges to bridge the gap. International Congress for Tropical Medicine and Malaria. Brisbane, Australia, 18-22 October 2016.

Journal Articles 2016

1. Abels M, Riva M, Bennet H, Ahlqvist E, Dyachok O, Nagaraj V, Shcherbina L, Fred RG, Poon W, Sorhede-Winzell M, Fadista J, Lindqvist A, Kask L, Sathanoori R, Dekker-Nitert M, Kuhar MJ, Ahren B, Wollheim CB, Hansson O, Tengholm A, Fex M, Renstrom E, Groop L, Lyssenko V and Wierup N. CART is overexpressed in human type 2 diabetic islets and inhibits glucagon secretion and increases insulin secretion. *Diabetologia*. 2016; 59: 1928-37.
2. Abu Choudhury M, Marsh N, Banu S, Paterson DL, Rickard CM and McMillan DJ. Molecular Comparison of Bacterial Communities on Peripheral Intravenous Catheters and Matched Skin Swabs. *Plos One*. 2016; 11. doi: e0146354 10.1371/journal.pone.0146354
3. Abumaree MH, Almutairi A, Cash S, Boeuf P, Chamley LW, Gamage T, James JL, Kalionis B, Khong TY, Kolahi KS, Lim R, Liong S, Morgan TK, Motomura K, Peiris HN, Pelekanos RA, Pelzer E, Shafiee A, Lash GE and Natale D. IFPA meeting 2015 workshop report IV: placenta and obesity; stem cells of the feto-maternal interface; placental immunobiology and infection. *Placenta*. 2016; 48: S17-S20. doi: 10.1016/j.placenta.2016.08.001
4. Achong N, McIntyre HD, Callaway LK and Duncan EL. Glycaemic behaviour during breastfeeding in women with Type 1 diabetes. *Diabetic Medicine*. 2016; 33: 947-55. doi: 10.1111/dme.12993
5. Adam S, Elfeky O, Kinhal V, Dutta S, Lai A, Jayabalan N, Nuzhat Z, Palma C, Rice GE and Salomon C. Fetal-maternal communication via extracellular vesicles - implications for complications of pregnancies. *Placenta*. 2016.
6. Adlard KN, Devin JL, Jenkins DG, Bolam KA, Aitken JF, Chambers SK, Dunn JC and Skinner TL. The influence of exercise intensity on fatigue in colorectal cancer survivors: a randomized controlled trial. *Asia-Pacific Journal of Clinical Oncology*. 2016; 12: 78-.
7. Alayán J, Vaquette C, Farah C and Ivanovski S. A histomorphometric assessment of collagen-stabilized anorganic bovine bone mineral in maxillary sinus augmentation - a prospective clinical trial. *Clinical Oral Implants Research*. 2016; 27: 850-8. doi: 10.1111/clr.12694
8. Alayán J, Vaquette C, Saifzadeh S, Hutmacher D and Ivanovski S. A histomorphometric assessment of collagen-stabilized anorganic bovine bone mineral in maxillary sinus augmentation - a randomized controlled trial in sheep. *Clinical Oral Implants Research*. 2016; 27: 734-43. doi: 10.1111/clr.12652
9. Albrecht C, Caniggia I, Clifton V, Gohner C, Harris L, Hemmings D, Jawerbaum A, Johnstone E, Jones H, Keelan J, Lewis R, Mitchell M, Murthi P, Powell T, Saffery R, Smith R, Vaillancourt C, Wadsack C and Salomon C. IFPA meeting 2015 workshop report IV: nanomedicine applications and exosome biology, xenobiotics and endocrine disruptors and pregnancy, and lipid mediators and placental function. *Placenta*. 2016; 42. doi: 10.1016/j.placenta.2016.01.003
10. Albrecht C, Caniggia I, Clifton V, Gohner C, Harris L, Hemmings D, Jawerbaum A, Johnstone E, Jones H, Keelan J, Lewis R, Mitchell M, Murthi P, Powell T, Saffery R, Smith R, Vaillancourt C, Wadsack C and Salomon C. IFPA meeting 2015 workshop report III: nanomedicine applications and exosome biology, xenobiotics and endocrine disruptors and pregnancy, and lipid. *Placenta*. 2016; 48: S12-S6. doi: 10.1016/j.placenta.2016.01.003
11. Alexander KA, Raggatt L-J, Millard S, Batoon L, Wu AC-K, Chang M-K, Hume DA and Pettit AR. Resting and injury-induced inflamed periosteum contain multiple macrophage subsets that are located at sites of bone growth and regeneration. *Immunology and Cell Biology*. 2016; 95: 7-16.
12. Allison S, Rose CA, Scott JG, Roeger L and Bastiampillai T. A research agenda for childhood bullying. *The Lancet Psychiatry*. 2016; 3: E1-E2.
13. Amini-Khoei H, Momeny M, Abdollahi A, Dehpour AR, Amiri S, Haj-Mirzaian A, Tavangar SM, Ghaffari SH, Rahimian R and Mehr SE. Tropisetron suppresses colitis-associated cancer in a mouse model in the remission stage. *International Immunopharmacology*. 2016; 36: 9-16. doi: 10.1016/j.intimp.2016.04.014
14. Andraweera PH, Bobek G, Bowen C, Burton GJ, Frigerio PC, Chaparro A, Dickinson H, Duncombe G, Hyett J, Illanes SE, Johnstone E, Kumar S, Morgan TK, Myers J, Orefice R, Roberts CT, Salafia CM, Thornburg KL, Whitehead CL and Bainbridge SA. IFPA meeting 2015 workshop report II: mechanistic role of the placenta in fetal programming; biomarkers of placental function and complications of pregnancy. *Placenta*. 2016; 48: S7-S11. doi: 10.1016/j.placenta.2016.12.012
15. Angwin AJ, Dissanayaka NNW, Moorcroft A, McMahon KL, Silburn PA and Copland DA. A neurophysiological study of semantic processing in Parkinson's disease. *Journal of the International Neuropsychological Society*. 2016: 1-12.
16. Araos J, Silva L, Salsoso R, Saez T, Barros E, Toledo F, Gutierrez J, Pardo F, Leiva A, Sanhueza C and Sobrevia L. Intracellular and extracellular pH dynamics in the human placenta from diabetes mellitus. *Placenta*. 2016; 43: 47-53. doi: 10.1016/j.placenta.2016.05.003
17. Arjomandi OK, Hussein WM, Vella P, Yusof Y, Sidjabat HE, Schenk G and McGeary RP. Design, synthesis, and in vitro and biological evaluation of potent amino acid-derived thiol inhibitors of the metallo-beta-lactamase IMP-1. *European Journal of Medicinal Chemistry*. 2016; 114: 318-27. doi: 10.1016/j.ejmech.2016.03.017
18. Armstrong R, Scott JG, Copland DA, McMahon K, Khan A, Najman JM, Alati R and Arnott W. Predicting receptive vocabulary change from childhood to adulthood: A birth cohort study. *Journal of Communication Disorders*. 2016; 64: 78-90. doi: 10.1016/j.jcomdis.2016.10.002
19. Asinobi AO, Ademola AD, Okolo CA, Adepoju AA, Samuel SM and Hoy WE. Kidney disease in hepatitis B surface antigen-positive children: experience from a centre in south-west Nigeria and a review of the Nigerian literature. *Paediatrics and International Child Health*. 2016: 1-7.
20. Atay C, Ryan SJ and Lewis FM. "Trying to Get a Grip": Language Competence and Self-Reported Satisfaction With Social Relationships Three Decades Post-Childhood Traumatic Brain Injury. *Journal of Head Trauma Rehabilitation*. 2016; 31: E30-E40. doi: 10.1097/htr.0000000000000182
21. Avent ML, Hansen MP, Gilks C, Del Mar C, Halton K, Sidjabat HE, Hall L, Dobson A, Paterson DL and van Driel ML. General Practitioner Antimicrobial Stewardship Programme Study (GAPS): protocol for a cluster randomised controlled trial. *MC Family Practice*. 2016; 17. doi: 48 10.1186/s12875-016-0446-7
22. 35. Awal MA, Lai MM, Azemi G, Boashash B and Colditz PB. EEG background features that predict outcome in term neonates with hypoxic ischaemic encephalopathy: A structured review. *Clinical Neurophysiology*. 2016; 127: 285-96. doi: 10.1016/j.clinph.2015.05.018
23. Badman SG, Causer LM, Guy R, Tabrizi SN, Francis F, Donovan B and Whitley DM. A preliminary evaluation of a new GeneXpert (Gx) molecular point-of-care test for the detection of *Trichomonas vaginalis*. Sexually transmitted infections. 2016; 92: 350-U117. doi: 10.1136/sextrans-2015-052384
24. Badman SG, Valley LM, Toliman P, Kariwiga G, Lote B, Pomat W, Holmer C, Guy R, Luchters S, Morgan C, Garland SM, Tabrizi S, Whitley DM, Rogerson SJ, Mola G, Wand H, Donovan B, Causer L, Kaldor J and Valley A. A novel point-of-care testing strategy for sexually transmitted infections

among pregnant women in high-burden settings: results of a feasibility study in Papua New Guinea. *BMC Infectious Diseases*. 2016; 16: 1-6.

25. Barr ELM, Maple-Brown LJ, Barzi F, Hughes JT, Jerums G, Ekinci EI, Ellis AG, Jones GRD, Lawton PD, Sajiv C, Majoni SW, Brown ADH, Hoy WE, O'Dea K, Cass A and MacIsaac RJ. Comparison of creatinine and cystatin C based eGFR in the estimation of glomerular filtration rate in Indigenous Australians: the eGFR Study. *Clinical Biochemistry*. 2016.

26. Barrett HL, McIntyre HD, D'Emden M, Dekker Nitert M, Callaway LK, Home monitoring of fasting and postprandial triglycerides in late pregnancy: A pilot study, *Diabetes Care* 2016. 40(1):e1-e2

27. Bartley PB, Ben Zakour NL, Stanton-Cook M, Muguli R, Prado L, Garnys V, Taylor K, Barnett TC, Pinna G, Robson J, Paterson DL, Walker MJ, Schembri MA and Beatson SA. Hospital-wide Eradication of a Nosocomial Legionella pneumophila Serogroup 1 Outbreak. *Clinical Infectious Diseases*. 2016; 62: 273-9. doi: 10.1093/cid/civ870

28. Baum O, Torchetti E, Malik C, Hoier B, Walker M, Walker PJ, Odriozola A, Graber F, Tschanz SA, Bangsbo J, Hoppeler H, Askev CD and Hellsten Y. Capillary ultrastructure and mitochondrial volume density in skeletal muscle in relation to reduced exercise capacity of patients with intermittent claudication. *American Journal of Physiology-Regulatory Integrative and Comparative Physiology*. 2016; 310: R943-R51. doi: 10.1152/ajpregu.00480.2015

29. Baz B, Patel J, Morahan G, Walker G and Khosrotehrani K. Genetic associations of skin wound healing in the collaborative cross identifies aldose reductase family members as key regulators of healing speed. *Journal of Investigative Dermatology*. 2016; 136: S258-S.

30. Beesley VL, Smithers BM, O'Rourke P, Janda M, Khosrotehrani K and Green AC. Variations in supportive care needs of patients after diagnosis of localised cutaneous melanoma: a 2-year follow-up study. *Supportive Care in Cancer*. 2016: 1-10.

31. Bell PT and Shine JM. Subcortical contributions to large-scale network communication. *Neuroscience and Biobehavioral Reviews*. 2016; 71: 313-22. doi: 10.1016/j.neubiorev.2016.08.036

32. Bennet H, Mollet IG, Balhuizen A, Medina A, Nagorny C, Bagge A, Fadista J, Ottosson-Laakso E, Vikman P, Dekker-Nitert M, Eliasson L, Wierup N, Artner I and Fex M. Serotonin (5-HT) receptor 2b activation augments glucose-stimulated insulin secretion in human and mouse islets of Langerhans. *Diabetologia*. 2016; 59: 744-54. doi: 10.1007/s00125-015-3847-6

33. Bergen PJ, Bulitta JB, Kirkpatrick CMJ, Rogers KE, McGregor MJ, Wallis SC, Paterson DL, Lipman J, Roberts JA and Landersdorfer CB. Effect of different renal function on antibacterial effects of piperacillin against *Pseudomonas aeruginosa* evaluated via the hollow-fibre infection model and mechanism-based modelling. *Journal of Antimicrobial Chemotherapy*. 2016; 71: 2509-20.

34. Bordin A, Sidjabat HE, Cottrell K and Cervin A. Chronic rhinosinusitis: a microbiome in dysbiosis and the search for alternative treatment options. *Microbiology Australia*. 2016; 37: 149-52. doi: 10.1071/ma16051

35. Brandenburg C, Worrall L, Copland DA, Power E and Rodriguez AD. The development and accuracy testing of CommFit (TM), an iPhone application for individuals with aphasia. *Aphasiology*. 2016; 30: 320-38. doi: 10.1080/02687038.2015.1028329

36. Brandenburg C, Worrall L, Copland DA and Rodriguez A. An exploratory investigation of the daily talk time of people with non-fluent aphasia and non-aphasic peers. *International Journal Speech Lang Pathol*. 2016: 1-12.

37. Broen MPG, Narayen NE, Kuijf ML, Dissanayaka NNW and Leentjens AFG. Prevalence of anxiety in Parkinson's disease: A systematic review and meta-analysis. *Movement Disorders*. 2016; 31: 1125-33. doi: 10.1002/mds.26643

38. Buckley C, Trembizki E, Donovan B, Chen M, Freeman K, Guy R, Kundu R, Lahra MM, Regan DG, Smith H and Whiley DM. A real-time PCR assay for direct characterization of the *Neisseria gonorrhoeae* GyrA 91 locus associated with ciprofloxacin susceptibility. *Journal of Antimicrobial Chemotherapy*. 2016; 71: 353-6. doi: 10.1093/jac/dkv366

39. Buckley C, Trembizki E, Donovan B, Chen M, Freeman K, Guy R, Lahra MM, Kundu RL, Regan DG, Smith HV and Whiley DM. Real-time PCR detection of *Neisseria gonorrhoeae* susceptibility to penicillin. *Journal of Antimicrobial Chemotherapy*. 2016; 71: 3090-5. doi: 10.1093/jac/dkw291

40. Burgess JT, Bolderson E, Saunus JM, Zhang SD, Reid LE, McNicol AM, Lakhani SR, Cuff K, Richard K, Richard DJ and O'Byrne KJ. SASH1 mediates sensitivity of breast cancer cells to chloropyramine and is associated with prognosis in breast cancer. *Oncotarget*. 2016; 7: 72807-18. doi: 10.18632/oncotarget.12020

41. Byrom L, Olsen CM and Green AC. Reply: Increased mortality for pregnancy-associated melanoma: systematic review and meta-analysis. *Journal of the European Academy of Dermatology and Venereology*. 2016; 30: 1618-9. doi: 10.1111/jdv.13201

42. Byrom L, Olsen CM and Green AC. Increased mortality for pregnancy-associated melanoma: different outcomes pooled together, selection and publication biases. *Journal of the European Academy of Dermatology and Venereology*. 2016; 30: 1618-9. doi: 10.1111/jdv.13202

43. Byrom L, Olsen CM, Khosrotehrani K and Green AC. Reply to Meta-analysis concerning mortality for pregnancy-associated melanoma. *Journal of the European Academy of Dermatology and Venereology*. 2016; 30: E106-E7. doi: 10.1111/jdv.13347

44. Cabrera L, Saavedra A, Rojas S, Cid M, Valenzuela C, Gallegos D, Careaga P, Basualto E, Haensgen A, Pena E, Rivas C, Vera JC, Gallardo V, Zuniga L, Escudero C, Sobrevia L, Wareing M and Gonzalez M. Insulin induces relaxation and decreases hydrogen peroxide-induced vasoconstriction in human placental vascular bed in a mechanism mediated by calcium-activated potassium channels and L-arginine/nitric oxide pathways. *Frontiers in Physiology*. 2016; 7. doi: 529 10.3389/fphys.2016.00529

45. Caesar R, Boyd RN, Colditz PB, Cioni G, Ware RS, Salthouse K, Doherty J, Jackson M, Matthews L, Hurley T, Morosini A, Thomas C, Camadon L and Baer E. Early prediction of typical outcome and mild developmental delay for prioritisation of service delivery for very preterm and very low birthweight infants: a study protocol. *BMJ Open*. 2016; 6: e010726. doi: 10.1136/bmjopen-2015-010726

46. Capon H, Hall W, Fry C and Carter A. Realising the technological promise of smartphones in addiction research and treatment: An ethical review. *International Journal of Drug Policy*. 2016; 36: 47-57. doi: 10.1016/j.drugpo.2016.05.013

47. Carrasco-Pozo C, Tan KN, Reyes-Farias M, De La Jara N, Ngo ST, Garcia-Diaz DF, Llanos P, Cires MJ and Borges K. The deleterious effect of cholesterol and protection by quercetin on mitochondrial bioenergetics of pancreatic beta-cells, glycemic control and inflammation: In vitro and in vivo studies. *Redox Biology*. 2016; 9: 229-43. doi: 10.1016/j.redox.2016.08.007

48. Carter A, Hendrikse J, Lee N, Yucel M, Verdejo-Garcia A, Andrews Z and Hall W. The neurobiology of "food addiction" and its implications for obesity treatment and policy. *Annual Review of Nutrition*. 2016; 36: 105-28.

49. Cen R, Hussain A, Pak KJ, Mitchell G, Nikles J, Gaudreau S, Bazzano LA and Breault JL. Do N-of-1 trials need IRB review? *Journal of Empirical Research on Human Research*

- Ethics. 2016; 11: 250-5.
50. Chambers S, Foley E, Clutton S, Legg M, Occhipinti S, Berry M, Stockler M, Lepore S, Frydenberg M, Gardiner RA, Davis I and Smith D. Mindfulness-based cognitive therapy for men with advanced prostate cancer: A randomised controlled trial. *Psychooncology*. 2016; 25: 8-.
51. Chambers SK, Foley E, Clutton S, Legg M, Occhipinti S, Berry M, Stockler MR, Lepore SJ, Frydenberg M, Gardiner RA, Davis ID and Smith DP. Mindfulness-based cognitive therapy for men with advanced prostate cancer: a randomised controlled trial. *International Journal Behav Med*. 2016; 23: S231-S.
52. Chambers SK, Foley E, Clutton S, McDowall R, Occhipinti S, Berry M, Stockler MR, Lepore SJ, Frydenberg M, Gardiner RA, Davis ID and Smith DP. The role of mindfulness in distress and quality of life for men with advanced prostate cancer. *Qual Life Res*. 2016: 1-9.
53. Chaparro A, Gaedeche D, Ramirez V, Zuniga E, Kusanovic JP, Inostroza C, Varas-Godoy M, Silva K, Salomon C, Rice GE and Illanes SE. Placental biomarkers and angiogenic factors in oral fluids of patients with preeclampsia. *Prenat Diagn*. 2016; 36: 476-82.
54. Cheng AC, Collins DA, Elliott B, Ferguson JK, Paterson DL, Thean S and Riley TV. Laboratory-based surveillance of *Clostridium difficile* circulating in Australia, September - November 2010. *Pathology*. 2016; 48: 257-60. doi: 10.1016/j.pathol.2016.02.005
55. Choudhury MA, Marsh N, Banu S, Paterson DL, Rickard CM and McMillan DJ. Molecular comparison of bacterial communities on peripheral intravenous catheters and matched skin swabs. *PLoS ONE*. 2016; 11.
56. Claus AP, Hides JA, Moseley GL and Hodges PW. Thoracic and lumbar posture behaviour in sitting tasks and standing: progressing the biomechanics from observations to measurements. *Appl Ergon*. 2016; 53: 161-8.
57. Cole MH, Rippey J, Naughton GA and Silburn PA. Use of a short-form balance confidence scale to predict future recurrent falls in people with Parkinson disease. *Arch Phys Med Rehab*. 2016; 97: 152-6. doi: 10.1016/j.apmr.2015.07.027
58. Collaborators GRF, Charlson FJ, Ferrari AJ, Abajobir AA, Erskine HE, Kibibis LD, Leung J, Santomauro DF, Veerman JL, Whiteford HA, Lalloo R, Scott JG, Alam NKM, Gouda HN, Guo Y and McGrath JJ. Global, regional, and national comparative risk assessment of 79 behavioural, environmental and occupational, and metabolic risks or clusters of risks, 1990-2015: a systematic analysis for the Global Burden of Disease Study 2015. *Lancet*. 2016; 388: 1659-724.
59. Connell M, Betts K, McGrath JJ, Alati R, Najman J, Clavarino A, Mamun A, Williams G and Scott JG. Hallucinations in adolescents and risk for mental disorders and suicidal behaviour in adulthood: Prospective evidence from the MUSP birth cohort study. *Schizophr Res*. 2016. doi: 10.1016/j.schres.2016.06.009
60. Conti E, Calderoni S, Gaglianese A, Pannek K, Mazzotti S, Rose S, Scelfo D, Tosetti M, Muratori F, Cioni G and Guzzetta A. Lateralization of brain networks and clinical severity in toddlers with autism spectrum disorder: A HARDI diffusion MRI study. *Autism Research*. 2016; 9: 382-92.
61. Conway ER and Chenery HJ. Evaluating the MESSAGE Communication Strategies in Dementia training for use with community-based aged care staff working with people with dementia: a controlled pretest-post-test study. *J Clin Nurs*. 2016; 25: 1145-55. doi: 10.1111/jocn.13134
62. Cormie P, Oliffe JL, Wootton AC, Galvao DA, Newton RU and Chambers SK. Improving psychosocial health in men with prostate cancer through an intervention that reinforces masculine values - exercise. *Psychooncology*. 2016; 25: 232-5. doi: 10.1002/pon.3867
63. Cormie P, Singh B, Hayes S, Peake JM, Galvao DA, Taaffe DR, Spry N, Nosaka K, Cornish B, Schmitz KH and Newton RU. Acute inflammatory response to low-, moderate-, and high-load resistance exercise in women with breast cancer-related lymphedema. *Integr Cancer Ther*. 2016; 15: 308-17.
64. Crookenden MA, Heiser A, Murray A, Dukkapiati VSR, Kay JK, Looor JJ, Meier S, Mitchell MD, Moyes KM, Walker CG and Roche JR. Parturition in dairy cows temporarily alters the expression of genes in circulating neutrophils. *Journal of Dairy Science*. 2016; 99: 6470-83.
65. Crookenden MA, Walker CG, Peiris HN, Koh Y, Heiser A, Looor JJ, Moyes KM, Murray A, Dukkapiati VSR, Kay JK, Meier S, Roche JR and Mitchell MD. Proteins from circulating exosomes represent metabolic state in transition dairy cows. *Journal of Dairy Science*. 2016; 99: 7661-8.
66. Crookenden MA, Walker CG, Peiris HN, Koh Y, Heiser A, Looor JJ, Moyes KM, Murray A, Dukkapiati VSR, Kay JK, Meier S, Roche JR and Mitchell MD. Short communication: Proteins from circulating exosomes represent metabolic state in transition dairy cows. *Journal of Dairy Science*. 2016; 99: 7661-8. doi: 10.3168/jds.2015-10786
67. Cullen JK, Murad NA, Yeo A, McKenzie M, Ward M, Chong KL, Schieber NL, Parton RG, Lim YC, Wolvetang E, Maghzal GJ, Stocker R and Lavin MF. AarF Domain Containing Kinase 3 (ADCK3) Mutant Cells Display Signs of Oxidative Stress, Defects in Mitochondrial Homeostasis and Lysosomal Accumulation. *Plos One*. 2016; 11. doi: e0148213 10.1371/journal.pone.0148213
68. Czielesky K, Prescott M, Porteous R, Campos P, Clarkson J, Steyn FJ, Campbell RE and Herbison AE. Pulse and Surge Profiles of Luteinizing Hormone Secretion in the Mouse. *Endocrinology*. 2016; 157: 4794-802. doi: 10.1210/en.2016-1351
69. Darkow R, Martin A, Würtz A, Flöel A and Meinzer M. Transcranial direct current stimulation effects on neural processing in post-stroke aphasia. *Human Brain Mapping*. 2016; 38: 1518-31.
70. Deb S, Lakhani SR, Ottini L and Fox SB. The cancer genetics and pathology of male breast cancer. *Histopathology*. 2016; 68: 110-8. doi: 10.1111/his.12862
71. Deeb W, Rossi PJ, Porta M, Visser-Vandewalle V, Servello D, Silburn P, Coyne T, Leckman JF, Foltynie T, Hariz M, Joyce EM, Zrinzo L, Kefalopoulou Z, Welter M-L, Karachi C, Mallet L, Houeto J-L, Shahed-Jimenez J, Meng F-G, Klassen BT, Mogilner AY, Pourfar MH, Kuhn J, Ackermans L, Kaido T, Temel Y, Gross RE, Walker HC, Lozano AM, Khandhar SM, Walter JC, Walter E, Mari Z, Changizi BK, Moro E, Baldermann JB, Huys D, Zaubner SE, Schrock LE, Zhang J-G, Hu W, Foote KD, Rizer K, Mink JW, Woods DW, Gunduz A and Okun MS. The international deep brain stimulation registry and database for Gilles de la Tourette syndrome: how does it work? *Frontiers in Neuroscience*. 2016; 10: 1-10.
72. Denham R, McGee TR, Eriksson L, McGrath J, Norman R, Sawyer M and Scott JG. Frequent peer problems in Australian children and adolescents. *Journal of Aggression Conflict and Peace Research*. 2016; 8: 162-73. doi: 10.1108/jacpr-11-2015-0196
73. Denkert C, Wienert S, Poterie A, Loibl S, Budczies J, Badve S, Bago-Horvath Z, Bane A, Bedri S, Brock J, Chmielik E, Christgen M, Colpaert C, Demaria S, Van den Eynden G, Floris G, Fox SB, Gao D, Heppner BI, Kim SR, Kos Z, Kreipe HH, Lakhani SR, Penault-Llorca F, Pruneri G, Radošević-Robin N, Rimm DL, Schnitt SJ, Sinn BV, Sinn P, Sirtaine N, O'Toole SA, Viale G, Van de Vijver K, de Wind R, von Minckwitz G, Klauschen F, Untch M, Fasching PA, Reimer T, Willard-Gallo K, Michiels S, Loi S and Salgado R. Standardized evaluation of tumor-infiltrating lymphocytes in breast cancer: results of the ring studies of the international immuno-oncology biomarker working group. *Modern Pathol*.

2016; 29: 1155-64. doi: 10.1038/modpathol.2016.109

74. Devaney J, Smyth R, Lutton S, McLaughlin R and Millar J. The soda dipstick: a convenient and cost-effective means of identifying the sugar content of soft drinks. *J Diabetes*. 2016; 8: 877-8. doi: 10.1111/1753-0407.12431

75. Devin JL, Sax AT, Hughes GI, Jenkins DG, Aitken JF, Chambers SK, Dunn JC, Bolam KA and Skinner TL. The influence of high-intensity compared with moderate-intensity exercise training on cardiorespiratory fitness and body composition in colorectal cancer survivors: a randomised controlled trial. *Journal of Cancer Survivorship*. 2016; 10: 467-79. doi: 10.1007/s11764-015-0490-7

76. Dias GJ, Mahoney P, Hung NA, Sharma LA, Kalita P, Smith RA, Kelly RJ and Ali A. Osteoconduction in keratin-hydroxyapatite composite bone-graft substitutes. *Journal of Biomedical Materials Research Part B: Applied Biomaterials*. 2016.

77. Dignam JK, Copland DA, Rawlings A, O'Brien K, Burfein P and Rodriguez AD. The relationship between novel word learning and anomia treatment success in adults with chronic aphasia. *Neuropsychologia*. 2016; 81: 186-97. doi: 10.1016/j.neuropsychologia.2015.12.026

78. Dignam JK, Rodriguez AD and Copland DA. Evidence for Intensive Aphasia Therapy: Consideration of Theories From Neuroscience and Cognitive Psychology. *Pm&R*. 2016; 8: 254-67. doi: 10.1016/j.pmrj.2015.06.010

79. GBD Disease Injury Incidence Prevalence Collaborators, Charlson FJ, Erskine HE, Ferrari AJ, Leung J, Whiteford HA, Abajobir AA, Knibbs LD, Lalloo R, Scott JG and Guo Y. Global, regional, and national incidence, prevalence, and years lived with disability for 310 diseases and injuries, 1990-2015: a systematic analysis for the Global Burden of Disease Study 2015. *Lancet*. 2016; 388: 1545-602.

80. Dissanayaka NNW, Idu Jion F, Pachana NA, O'Sullivan JD, Marsh R, Byrne GJ and Harnett P. Mindfulness for motor and nonmotor dysfunctions in Parkinson's Disease. *Parkinson's Disease*. 2016; doi: 7109052 10.1155/2016/7109052

81. Dissanayaka NNW, O'Sullivan JD, Pachana NA, Marsh R, Silburn PA, White EX, Torbey E, Mellick GD, Copland DA and Byrne GJ. Disease-specific anxiety symptomatology in Parkinson's disease. *International Psychogeriatrics*. 2016; 28: 1153-63. doi: 10.1017/s1041610215002410

82. Divakaran P, Roberts MJ, Perera M, Pais A and Pretorius CF. Congenital contralateral venous drainage of a right ectopic kidney to left common iliac vein: a rare case report. *European Journal of Anatomy*. 2016; 20: 227-30.

83. Dixit A, Donnelly S, Lund MA, Dalton JP and Greer JM. Protection against development of a mouse model of multiple sclerosis by a parasite-derived 68-mer peptide. *European Journal of Immunology*. 2016; 46: 1042-.

84. Donovan P, Patel J, Francois M and Khosrotehrani K. Origin of vascular progenitors driving melanoma angiogenesis in vivo. *Australasian Journal of Dermatology*. 2016; 57: 23-4.

85. Dost F, Do L and Farah CS. Knowledge of oral cancer risk factors amongst high-risk Australians: findings from the LESIONS programme. *Australian Dental Journal*. 2016; 61: 432-9. doi: 10.1111/adj.12408

86. Du QS, Trabi M, Richards RS, Mirtschin P, Madaras F, Nouwens A, Zhao KN, de Jersey J, Lavin MF, Guddat LW and Masci PP. Characterization and structural analysis of a potent anticoagulant phospholipase A(2) from *Pseudechis australis* snake venom. *Toxicon*. 2016; 111: 37-49. doi: 10.1016/j.toxicon.2015.12.017

87. Dubo S, Gallegos D, Cabrera L, Sobrevia L, Zuniga L and Gonzalez M. Cardiovascular action of insulin in health and disease: endothelial L-arginine transport and cardiac voltage-dependent potassium channels. *Front Physiol*. 2016; 7.

88. Duffy DL, McDonald SP, Hayhurst B, Panagiotopoulos S, Smith TJ, Wang XL, Wilcken DE, Duarte NL, Mathews J and Hoy WE. Familial aggregation of albuminuria and arterial hypertension in an Aboriginal Australian community and the contribution of variants in ACE and TP53. *BMC Nephrol*. 2016; 17: 1-10.

89. Dunn J, Chambers SK and Hyde MK. Systematic Review of Motives for Episodic Volunteering. *Voluntas*. 2016; 27: 425-64. doi: 10.1007/s11266-015-9548-4

90. Dzafic I, Martin AK, Hocking J, Mowry B and Burianova H. Dynamic emotion perception and prior expectancy. *Neuropsychologia*. 2016; 86: 131-40. doi: 10.1016/j.neuropsychologia.2016.04.025

91. Eiby YA, Shrimpton NY, Wright IMR, Lumbers ER, Colditz PB, Duncombe GJ and Lingwood BE. Inotropes do not increase cardiac output or cerebral blood flow in preterm piglets. *Pediatric Research*. 2016; 80: 870-9. doi: 10.1038/pr.2016.156

92. Elfeky O, Longo S, Lai A, Rice GE and Salomon C. Influence of maternal BMI on the exosomal profile during gestation and their role on maternal systemic inflammation. *Placenta*. 2017; 50: 60-9. doi: 10.1016/j.placenta.2016.12.020

93. Erskine HE, Baxter AJ, Patton G, Moffitt TE, Patel V, Whiteford HA and Scott JG. The global coverage of prevalence data for mental disorders in children and adolescents. *Epidemiology and Psychiatric Sciences*. 2016: 1-8.

94. Erskine HE, Norman RE, Ferrari AJ, Chan GCK, Copeland WE, Whiteford HA and Scott JG. Long-term outcomes of attention-deficit/hyperactivity disorder and conduct disorder: a systematic review and meta-analysis. *Journal of the American Academy of Child and Adolescent Psychiatry*. 2016; 55: 841-50.

95. Escudero CA, Herlitz K, Troncoso F, Acurio J, Aguayo C, Roberts JM, Truong G, Duncombe G, Rice GE and Salomon C. Role of Extracellular Vesicles and microRNAs on Dysfunctional Angiogenesis during Preeclamptic Pregnancies. *Frontiers in Physiology*. 2016; 7. doi: 98 10.3389/fphys.2016.00098

96. Evans T, Boyd RN, Colditz PB, Sanders M and Whittingham K. Baby triple P for parents of a very preterm infant: a case study. *Journal of Child and Family Studies*. 2016: 1-10.

97. Evans T, Boyd RN, Colditz PB, Sanders M and Whittingham K. Mother-very preterm infant relationship quality: RCT of baby triple P. *Journal of Child and Family Studies*. 2016: 1-12.

98. Falcone M and Paterson DL. Spotlight on ceftazidime/avibactam: a new option for MDR Gram-negative infections. *Journal of Antimicrobial Chemotherapy*. 2016; 71: 2713-22. doi: 10.1093/jac/dkw239

99. Farah CS, Dalley AJ, Nguyen P, Batstone M, Kordbacheh F, Perry-Keene J and Fielding D. Improved surgical margin definition by narrow band imaging for resection of oral squamous cell carcinoma: A prospective gene expression profiling study. *Head and Neck-Journal of the Sciences and Specialties of the Head and Neck*. 2016; 38: 832-9. doi: 10.1002/hed.23989

100. Fernando GJ, Zhang J, Ng HI, Haigh OL, Yukiko SR and Kendall MA. Influenza nucleoprotein DNA vaccination by a skin targeted, dry coated, densely packed microprojection array (Nanopatch) induces potent antibody and CD8(+) T cell responses. *Journal of Controlled Release*. 2016; 237: 35-41. doi: 10.1016/j.jconrel.2016.06.045

101. Ferrazzoli D, Carter A, Ustun FS, Palamara G, Ortelli P, Maestri R, Yucel M and Frazzitta G. Dopamine Replacement Therapy, Learning and Reward Prediction in Parkinson's Disease: Implications for Rehabilitation. *Frontiers in Behavioral Neuroscience*. 2016; 10. doi: 12110.3389/fnbeh.2016.00121

102. Ferro MA, Van Lieshout RJ, Ohayon J and Scott JG. Emotional and behavioral problems in adolescents and young adults with food allergy. *Allergy*. 2016; 71: 532-40. doi:

- 10.1111/all.12829
103. Ferro MA, Van Lieshout RJ, Scott JG, Alati R, Mamun AA and Dingle K. Condition-specific associations of symptoms of depression and anxiety in adolescents and young adults with asthma and food allergy. *Journal of Asthma*. 2016; 53: 282-8. doi: 10.3109/02770903.2015.1104694
104. Field S, Uyttenhove C, Stroobant V, Cheou P, Coutelier J-P, Simpson PT, Cummings MC, Saunus JM, Reid LE, Kutasovic JR, McNicol AM, Kim BR, Kim JH, Lakhani SR, Neville AM, Van Snick J and Jat PS. Novel highly specific anti-periostin antibodies uncover the functional importance of the fascilin 1-1 domain and highlight preferential expression of periostin in aggressive breast cancer. *International Journal of Cancer*. 2016; 138: 1959-70.
105. Field S, Uyttenhove C, Stroobant V, Cheou P, Donckers D, Coutelier JP, Simpson PT, Cummings MC, Saunus JM, Reid LE, Kutasovic JR, McNicol AM, Kim BR, Kim JH, Lakhani SR, Neville AM, Van Snick J and Jat PS. Novel highly specific anti-periostin antibodies uncover the functional importance of the fascilin 1-1 domain and highlight preferential expression of periostin in aggressive breast cancer. *International Journal Cancer*. 2016; 138: 1959-70. doi: 10.1002/ijc.29946
106. Fielding D, Bashirzadeh F, Singh M, Nandakumar L, Reed AM, Black D, Dalley A, Pearson J, Nones K, Waddell N, Simpson PT and Lakhani S. Next generation sequencing on endobronchial ultrasound transbronchial needle aspirate lymph node specimens in lung cancer shows a high incidence of mutations and consistency with single gene testing. *Respirology*. 2016; 21: 50-.
107. Finnigan S, Wong A and Read S. Defining abnormal slow EEG activity in acute ischaemic stroke: Delta/alpha ratio as an optimal QEEG index. *Clin Neurophysiol*. 2016; 127: 1452-9. doi: 10.1016/j.clinph.2015.07.014
108. Finnigan S, Colditz PB. Predominant slow EEG activity in healthy neonates: Transient thalamo-cortical dysrhythmia? *Clinical Neurophysiology*. (In press; accepted 19/11/16).
109. Flanagan KJ, Copland DA, van Hees S, Byrne GJ and Angwin AJ. Semantic Feature Training for the Treatment of Anomia in Alzheimer Disease: A Preliminary Investigation. *Cognitive and Behavioral Neurology*. 2016; 29: 32-43.
110. Fogarty MJ, Klenowski PM, Lee JD, Drieberg-Thompson JR, Bartlett SE, Ngo ST, Hilliard MA, Bellingham MC and Noakes PG. Cortical synaptic and dendritic spine abnormalities in a presymptomatic TDP-43 model of amyotrophic lateral sclerosis. *Sci Rep*. 2016; 6. doi: 3796810.1038/srep37968
111. Ford PJ, Tran P, Cockburn N, Keen B, Kavanagh DJ and Gardner C. Survey of dental clinic patients: smoking and preferences for cessation support. *Australian Dental Journal*. 2016; 61: 219-26. doi: 10.1111/adj.12345
112. Forlini C and Hall W. The is and ought of the ethics of neuroenhancement: mind the gap. *Front Psychol*. 2016; 6: 1998.1-5.
113. Furuya-Kanamori L, Clements ACA, Foster NF, Huber CA, Hong S, Harris-Brown T, Yakob L, Paterson DL and Riley TV. Asymptomatic *Clostridium difficile* colonization in two Australian tertiary hospitals, 2012-2014: prospective, repeated cross-sectional study. *Clin Microbiol Infect*. 2016; 23: 48.e1-e7.
114. Furuya-Kanamori L, Riley TV, Paterson DL, Foster NF, Huber CA, Hong S, Harris-Brown T, Robson J and Clements AC. A comparison of *Clostridium difficile* ribotypes circulating in Australian hospitals and communities. *J Clin Microbiol*. 2016. doi: 10.1128/jcm.01779-16
115. Furuya-Kanamori L, Yakob L, Riley TV, Paterson DL, Baker P, McKenzie SJ, Robson J and Clements ACA. Community-acquired *Clostridium difficile* infection, Queensland, Australia. *Emerging Infectious Diseases*. 2016; 22: 1659-61.
116. Gallo LA, Barrett HL and Dekker Nitert M. Review: Placental transport and metabolism of energy substrates in maternal obesity and diabetes. *Placenta*. 2016. doi: 10.1016/j.placenta.2016.12.006
117. Gardiner RA, Yaxley JW, Coughlin GD, Chambers SK, Occhipinti S, Samarasinghe H, Zaidlewicz L, Dunglison N, Carter R, Williams S, Payton DJ, Perry-Keene J and Lavin MF. A randomized controlled trial of robotic versus open radical prostatectomy: early outcomes. *Asia-Pac J Clin Onco*. 2016; 12: 29-.
118. Gardiner RA, Mainwaring P and Lavin MF. Integrating molecular profiling of liquid biopsy samples with a calculator algorithm to detect high-risk prostate cancer. *Eur Urol*. 2016; 70: 749-50.
119. Gbadeyan O, McMahon K, Steinhäuser M and Meinzer M. Stimulation of dorsolateral prefrontal cortex Enhances adaptive cognitive control: a high-definition transcranial direct current stimulation study. *Journal of Neuroscience*. 2016; 36: 12530-6.
120. Gbadeyan O, Steinhäuser M, McMahon K and Meinzer M. Safety, Tolerability, Blinding Efficacy and Behavioural Effects of a Novel MRI-Compatible, High-Definition tDCS Set-Up. *Brain Stimul*. 2016; 9: 547-54. doi: 10.1016/j.brs.2016.03.018
121. Gheisari Y, Vasei M, Shafiee A, Soleimani M, Seyedjafari E, Omidhkoda A, Langroudi L and Ahmadbeigi N. A Three-Dimensional Scaffold-Based System for Modeling the Bone Marrow Tissue. *Stem Cells Dev*. 2016; 25: 492-8. doi: 10.1089/scd.2015.0182
122. Goasdoué K, Awabdy D, Bjorkman ST and Miller SM. Standard loading controls are not reliable for Western blot quantification across brain development or in pathological conditions. *Electrophoresis*. 2016; 37: 630-4. doi: 10.1002/elps.201500385
123. Goasdoué K, Miller SM, Colditz PB and Bjorkman ST. The blood-brain barrier; protecting the developing fetal brain. *Placenta*. 2016.
124. Gomez-Arango LF, Barrett HL, McIntyre HD, Callaway LK, Morrison M and Dekker Nitert M. Increased systolic and diastolic blood pressure is associated with altered gut microbiota composition and butyrate production in early pregnancy. *Hypertension*. 2016; 68: 974-81. doi: 10.1161/hypertensionaha.116.07910
125. Gomez-Arango LF, Barrett HL, McIntyre HD, Callaway LK, Morrison M and Dekker Nitert M. Connections between the gut microbiome and metabolic hormones in early pregnancy in overweight and obese women. *Diabetes*. 2016; 65: 2214-23. doi: 10.2337/db16-0278
126. Graves N, Page K, Martin E, Brain D, Hall L, Campbell M, Fulop N, Jimmison N, White K, Paterson DL and Barnett AG. Cost-effectiveness of a national initiative to improve hand hygiene compliance using the outcome of healthcare associated *Staphylococcus aureus* Bacteraemia. *Plos One*. 2016; 11. doi: e0148190 10.1371/journal.pone.0148190
127. Greer JM, Muller DM, Beasley SJ, Trifileff E and Pender MP. Functional effects of antibodies specific for myelin proteolipid protein in multiple sclerosis. *European Journal of Immunology*. 2016; 46: 164-.
128. Gupta M, Forlini C, Lenton K, Duchon R and Lohfeld L. The Hidden Ethics Curriculum in Two Canadian Psychiatry Residency Programs: A Qualitative Study. *Academic Psychiatry*. 2016; 40: 592-9. doi: 10.1007/s40596-015-0456-0
129. Gutierrez J, Droppelmann CA, Salsoso R, Westermeier F, Toledo F, Salomon C, Sanhueza C, Pardo F, Leiva A and Sobrevia L. A Hypothesis for the Role of RECK in Angiogenesis. *Current Vascular Pharmacology*. 2016; 14: 106-15. doi: 10.2174/157016113666151014130746
130. Gutierrez-Gutierrez B, Bonomo RA, Carmeli Y, Paterson DL, Almirante B, Martinez-Martinez L, Oliver A, Calbo E, Pena C, Akova M, Pitout J, Origen J, Pintado V, Garcia-Vazquez

E, Gasch O, Hamprecht A, Prim N, Tumbarello M, Bou G, Viale P, Tacconelli E, Almela M, Perez F, Giamarellou H, Cisneros JM, Schwaber MJ, Venditti M, Lowman W, Bermejo J, Hsueh PR, Mora-Rillo M, Gracia-Ahulfinger I, Pascual A and Rodriguez-Bano J. Ertapenem for the treatment of bloodstream infections due to ESBL-producing Enterobacteriaceae: a multinational pre-registered cohort study. *Journal of Antimicrobial Chemotherapy*. 2016; 71: 1672-80. doi: 10.1093/jac/dkv502

131. Gutierrez-Gutierrez B, Perez-Galera S, Salamanca E, de Cueto M, Calbo E, Almirante B, Viale P, Oliver A, Pintado V, Gasch O, Martinez-Martinez L, Pitout J, Akova M, Pena C, Molina J, Hernandez A, Venditti M, Prim N, Origen J, Bou G, Tacconelli E, Tumbarello M, Hamprecht A, Giamarellou H, Almela M, Perez F, Schwaber MJ, Bermejo J, Lowman W, Hsueh PR, Mora-Rillo M, Natera C, Souli M, Bonomo RA, Carmeli Y, Paterson DL, Pascual A and Rodriguez-Bano J. A Multinational, Preregistered Cohort Study of beta-Lactam/beta-Lactamase Inhibitor Combinations for Treatment of Bloodstream Infections Due to Extended-Spectrum-beta-Lactamase-Producing Enterobacteriaceae. *Antimicrobial Agents and Chemotherapy*. 2016; 60: 4159-69. doi: 10.1128/aac.00365-16

132. Gutierrez-Gutierrez B, Salamanca E, de Cueto M, Hsueh PR, Viale P, Pano-Pardo JR, Mario V, Tumbarello M, Dailkos G, Pintado V, Doi YH, Tuon FF, Karaiskos I, Machuca I, Schwaber MJ, Azap OK, Souli M, Roilides E, Pournaras S, Akova M, Perez F, Bermejo J, Oliver A, Almela M, Lowman W, Almirante B, Bonomo RA, Carmeli Y, Paterson DL, Pascual A and Rodriguez-Bano J. A predictive model of mortality in patients with bloodstream infections due to carbapenemase-producing enterobacteriaceae. *Mayo Clinic Proceedings*. 2016; 91: 1362-71. doi: 10.1016/j.mayocp.2016.06.024

133. Guzman-Gutierrez E, Armella A, Toledo F, Pardo F, Leiva A and Sobrevia L. Insulin requires A(1) adenosine receptors expression to reverse gestational diabetes-increased L-arginine transport in human umbilical vein endothelium. *Purinergic Signalling*. 2016; 12: 175-90. doi: 10.1007/s11302-015-9491-2

134. Hall L, Farrington A, Mitchell BG, Barnett AG, Halton K, Allen M, Page K, Gardner A, Havers S, Bailey E, Dancer SJ, Riley TV, Gericke CA, Paterson DL and Graves N. Researching effective approaches to cleaning in hospitals: protocol of the REACH study, a multi-site stepped-wedge randomised trial. *Implementation Science*. 2016; 11. doi: 4410.1186/s13012-016-0406-6

135. Hall W. Conservatism, consumer choice and the food and drug administration during the Reagan era. *Social History of Medicine*. 2016; 29: 202-3.

136. Hamani C, Aziz T, Bloem BR, Brown P, Chabardes S, Coyne T, Foote K, Garcia-Rill E, Hirsch EC, Lozano AM, Mazzone PAM, Okun MS, Hutchison W, Silburn P, Zrinzo L, Alam M, Goetz L, Pereira E, Rughani A, Thevathasan W, Moro E and Krauss JK. Pedunculopontine Nucleus Region Deep Brain Stimulation in Parkinson Disease: Surgical Anatomy and Terminology. *Stereotactic and Functional Neurosurgery*. 2016; 94: 298-306. doi: 10.1159/000449010

137. Hamani C, Lozano AM, Mazzone PAM, Moro E, Hutchison W, Silburn PA, Zrinzo L, Alam M, Goetz L, Pereira E, Rughani A, Thevathasan W, Aziz T, Bloem BR, Brown P, Chabardes S, Coyne T, Foote K, Garcia-Rill E, Hirsch EC, Okun MS and Krauss JK. Pedunculopontine Nucleus Region Deep Brain Stimulation in Parkinson Disease: Surgical Techniques, Side Effects, and Postoperative Imaging. *Stereotactic and Functional Neurosurgery*. 2016; 94: 307-19. doi: 10.1159/000449011

138. Hancock SJ, Phan M-D, Peters KM, Forde BM, Chong TM, Yin W-F, Chan K-G, Paterson DL, Walsh TR, Beatson SA and Schembri MA. Identification of IncA/C plasmid replication and maintenance genes and development of a plasmid multi-locus sequence-typing scheme. *Antimicrobial Agents in Chemotherapy*. 2016; 61.

139. Harris PN, McNamara JF, Lye DC, Davis JS, Bernard L, Cheng AC, Doi Y, Fowler VG, Jr., Kaye KS, Leibovici L, Lipman J, Llewelyn MJ, Munoz-Price S, Paul M, Peleg AY, Rodriguez-Bano J, Rogers BA, Seifert H, Thamlikitkul V, Thwaites G, Tong SY, Turnidge J, Utili R, Webb SA and Paterson DL. Proposed primary endpoints for use in clinical trials that compare treatment options for bloodstream infection in adults: a consensus definition. *Clinical Microbiology and Infection*. 2016. doi: 10.1016/j.cmi.2016.10.023

140. Harris PNA, Oltvolgyi C, Islam A, Hussain-Yusuf H, Loewenthal MR, Vincent G, Stenos J and Graves S. An outbreak of scrub typhus in military personnel despite protocols for antibiotic prophylaxis: doxycycline resistance excluded by a quantitative PCR-based susceptibility assay. *Microbes and Infection*. 2016; 18: 406-11. doi: 10.1016/j.micinf.2016.03.006

141. Harris PNA, Wei JY, Shen AW, Abdile AA, Paynter S, Huxley RR, Pandeya N, Doi Y, Huh K, O'Neal CS, Talbot TR and Paterson DL. Carbapenems versus alternative antibiotics for the treatment of bloodstream infections caused by Enterobacter, Citrobacter or Serratia species: a systematic review with meta-analysis. *Journal of Antimicrobial Chemotherapy*. 2016; 71: 296-306. doi: 10.1093/jac/dkv346

142. Henry JD, Castellini J, Moses E and Scott JG. Emotion regulation in adolescents with mental health problems. *Journal of Clinical and Experimental Neuropsychology*. 2016; 38: 197-207. doi: 10.1080/13803395.2015.1100276

143. Hill MM and Gardiner RA. Prospecting for prostate cancer with precision medicine. *Translational Cancer Research*. 2016; 5: S865-S7.

144. Holland O, Dekker Nitert M, Gallo LA, Vejzovic M, Fisher JJ and Perkins AV. Review: Placental mitochondrial function and structure in gestational disorders. *Placenta*. 2016.

145. Homer H, Rice GE and Salomon C. Embryo- and endometrium-derived exosomes and their potential role in assisted reproductive treatments-liquid biopsies for endometrial receptivity. *Placenta*. 2016. doi: 10.1016/j.placenta.2016.12.011

146. Huber CA, Sidjabat HE, Zowawi HM, Kvaskoff D, Reed S, McNamara JF, McCarthy KL, Harris P, Toh B, Wailan AM and Paterson DL. Detection of carbapenemase activity in Enterobacteriaceae using LC-MS/MS in comparison with the neo-rapid CARS kit using direct visual assessment and colorimetry. *Journal of Microbiological Methods*. 2016; 131: 68-72. doi: 10.1016/j.mimet.2016.10.005

147. Hughes JT, Maple-Brown LJ, Thomas M, Lawton P, Sinha A, Cass A, Barzi F, Jones GRD, Jerums G, MacIsaac R, O'Dea K and Hoy WE. Cross-sectional associations of albuminuria among Aboriginal and Torres Strait Islander adults: the eGFR Study. *Nephrology*. 2016.

148. Hui BB, Wiley DM, Donovan B, Law MG, Regan DG, Chen M, Guy R and Lahra M. Identifying factors that lead to the persistence of imported gonorrhoeae strains: a modelling study. *Sexually transmitted infections*. 2016.

149. Hyde M, Newton R, Galvao D, Gardiner RA, Occhipinti S, Lowe A, Wittert G and Chambers S. Prostate-cancer related concerns of men in the first year after localised prostate cancer diagnosis and decisions to seek help. *Psychooncology*. 2016; 25: 8-.

150. Hyde MK, Chambers SK, Shum D, Ip D and Dunn J. Psycho-oncology assessment in Chinese populations: a systematic review of quality of life and psychosocial measures. *Journal of Microbiological Methods (Engl)*. 2016; 25: 691-718. doi: 10.1111/ecc.12367

151. 164. Hyde MK, Newton RU, Galvao DA, Gardiner RA, Occhipinti S, Lowe A, Wittert GA and Chambers SK. Men's help-seeking in the first year after diagnosis of localised

- prostate cancer. *European Journal of Cancer Care (Engl)*. 2016.
152. Hyde MK, Zajdlewicz L, Wootten AC, Nelson CJ, Lowe A, Dunn J and Chambers SK. Medical help-seeking for sexual concerns in prostate cancer survivors. *Sexual Medicine*. 2016; 4: E7-E17. doi: 10.1016/j.esxm.2015.12.004
153. Ibrahim H, Roberts MJ and Hussey D. Quadruple orchi-dopexy for torsion testis in an adolescent with polyorchidism: A Case Report. *Urology*. 2016; 87: 196-9. doi: 10.1016/j.urology.2015.09.011
154. Iltas JD, Guanzon D, Elfeky O, Rice GE and Salomon C. Bio-compartmentalization of microRNAs in exosomes during gestational diabetes mellitus. *Placenta*. 2016.
155. Ioannides ZA, Henderson RD, Robertson T, Davis M and McCombe PA. When does ALS start? A novel SOD-1 p.Gly142Arg mutation causing motor neurone disease with prominent premorbid cramps and spasms. *Journal of Neurology Neurosurgery and Psychiatry*. 2016; 87: 1031-. doi: 10.1136/jnnp-2015-311582
156. Ioannides ZA, Ngo ST, Henderson RD, McCombe PA and Steyn FJ. Altered Metabolic Homeostasis in Amyotrophic Lateral Sclerosis: Mechanisms of Energy Imbalance and Contribution to Disease Progression. *Neurodegenerative Diseases*. 2016; 16: 382-97. doi: 10.1159/000446502
157. James A, Luff J, Ho U, Quek H, Lavin MF and Roberts T. SMG1 is a regulator of toll-like receptor responses. *European Journal of Immunology*. 2016; 46: 84-.
158. Jeffery E, Lee Y, McVeigh J, Newton R, Straker L and McIntyre C. Actigraphy: an objective measure of activity levels in malignant pleural effusion patients. *Respirology*. 2016; 21: 150-.
159. Jensen C, Forlini C, Partridge B and Hall W. Australian University Students' Coping Strategies and Use of Pharmaceutical Stimulants as Cognitive Enhancers. *Frontiers in Psychology*. 2016; 7: 2771-9.
160. Johnson JC, Scott JG and Jess N. Assessing the effectiveness of pharmacotherapy for obsessive-compulsive disorder. *The Lancet Psychiatry*. 2016; 3.
161. Johnston RL, Wockner L, McCart Reed AE, Wiegman A, Chenevix-Trench G, Khanna KK, Lakhani SR and Smart CE. High content screening application for cell-type specific behaviour in heterogeneous primary breast epithelial subpopulations. *Breast Cancer Research*. 2016; 18. doi: 10.1186/s13058-016-0681-9
162. Johnston T, Sekar R, Endo T, Moffitt T, Peterson L, Nestor I, Donovan T, Colditz PB and Ellerington J. Has the Prevalence of Neural Tube Defects Decreased in Babies Born to Indigenous Mothers in Queensland? *Australian & New Zealand Journal of Obstetrics & Gynaecology*. 2016; 56: 36-.
163. Kalita-De Croft P, Al-Ejeh F, McCart Reed AE, Sautnus JM and Lakhani SR. 'Omics approaches in breast cancer research and clinical practice. *Advances in anatomic pathology*. 2016; 23: 356-67. doi: 10.1097/PAP.0000000000000128
164. Kalita-De Croft P, Bedford J, Leader JP and Walker RJ. Amiloride modifies the progression of lithium-induced renal interstitial fibrosis. *Nephrology*. 2016. doi: 10.1111/nep.12929
165. Khan NA and Boashash B. Multi-component instantaneous frequency estimation using locally adaptive directional time frequency distributions. *International Journal of Adaptive Control and Signal Processing*. 2016; 30: 429-42. doi: 10.1002/acs.2583
166. Khan S, Nabi G, Naeem M, Ali L, Silburn PA and Mellick GD. A door-to-door survey to estimate the prevalence of Parkinsonism in Pakistan. *Neuropsychiatric disease and treatment*. 2016; 12: 1499-506. doi: 10.2147/ndt.s86329
167. Khashram M, Jenkins JS, Jenkins J, Kruger AJ, Boyne NS, Foster WJ and Walker PJ. Long-term outcomes and factors influencing late survival following elective abdominal aortic aneurysm repair: A 24-year experience. *Vascular*. 2016; 24: 115-25. doi: 10.1177/1708538115586682
168. Knight B, Dissanayaka NNW and Pachana NA. Adapting psychotherapy for older patients with Parkinson's disease. *International Psychogeriatrics*. 2016; 28: 1631-6. doi: 10.1017/s1041610216000569
169. Koh YQ, Peiris HN, Vaswani K, Reed S, Rice GE, Salomon C and Mitchell MD. Characterization of exosomal release in bovine endometrial intercaruncular stromal cells. *Reproductive Biology and Endocrinology*. 2016; 14: 78. doi: 10.1186/s12958-016-0207-4
170. Kordbacheh F, Bhatia N and Farah CS. Patterns of differentially expressed genes in oral mucosal lesions visualised under autofluorescence (VELscope (TM)). *Oral Diseases*. 2016; 22: 285-96. doi: 10.1111/odi.12438
171. Koulenti D, Tsigou E and Rello J. Nosocomial pneumonia in 27 ICUs in Europe: perspectives from the EU-VAP/CAP study. *European Journal of Clinical Microbiology and Infectious Diseases*. 2016: 1-8.
172. Kozlov SV, Waardenberg AJ, Engholm-Keller K, Arthur JW, Graham ME and Lavin MF. Reactive Oxygen Species (ROS)-Activated ATM-Dependent Phosphorylation of Cytoplasmic Substrates Identified by Large-Scale Phosphoproteomics Screen. *Molecular & Cellular Proteomics*. 2016; 15: 1032-47. doi: 10.1074/mcp.M115.055723
173. Lahra MM, Dillon JAR, George CRR, Lewis DA, Wi TE and Whitley DM. From zero to zero in 100 years: gonococcal antimicrobial resistance. *Microbiology Australia*. 2016; 37: 173-6. doi: 10.1071/ma16058
174. Lai FY, O'Brien J, Bruno R, Hall W, Prichard J, Kirkbride P, Gartner C, Thai P, Carter S, Lloyd B, Burns L and Mueller J. Spatial variations in the consumption of illicit stimulant drugs across Australia: A nationwide application of wastewater-based epidemiology. *Science of the Total Environment*. 2016; 568: 810-8. doi: 10.1016/j.scitotenv.2016.05.207
175. Lai MM, D'Acunzio G, Guzzetta A, Boyd RN, Rose SE, Frapp J, Finnigan S, Ngenda N, Love P, Whittingham K, Pannek K, Ware RS and Colditz PB. PREMM: preterm early massage by the mother: protocol of a randomised controlled trial of massage therapy in very preterm infants. *BMC Pediatrics*. 2016; 16. doi: 10.1186/s12887-016-0678-7
176. Lalla Y, Matias MAT and Farah CS. Assessment of oral mucosal lesions with autofluorescence imaging and reflectance spectroscopy. *Journal of the American Dental Association*. 2016; 147: 650-60. doi: 10.1016/j.adaj.2016.03.013
177. Lamont RM, Morris ME, Woollacott MH and Brauer SG. Ambulatory activity in people with early Parkinson's Disease. *Brain Impairment*. 2016; 17: 87-98. doi: 10.1017/BrImp.2015.23
178. Lange J, McCarthy A, Kay J, Meier S, Walker C, Crookenden MA, Mitchell MD, Loo JJ, Roche JR and Heiser A. Parturient feeding level and body condition score affect immunological performance in grazing dairy cows during the transition period. *Journal of Dairy Science*. 2016; 99: 2329-38. doi: 10.3168/jds.2015-10135
179. Lavin MF, Yeo AJ, Kijas AW, Wolvetang E, Sly PD, Wainwright C and Sinclair K. Therapeutic targets and investigated treatments for Ataxia-Telangiectasia. *Expert Opinion on Orphan Drugs*. 2016; 4: 1263-76. doi: 10.1080/21678707.2016.1254618
180. Lee A, Stevens MG, Anderson AR, Kwan A, Balcar VJ and Pow DV. A novel splice variant of the Excitatory Amino Acid Transporter 5: Cloning, immunolocalization and functional characterization of hEAAT5v in human retina. *Neurochemistry International*. 2016; 101: 76-82. doi: 10.1016/j.neuint.2016.10.013
181. Lee JS, Rodero MP, Moi D, Patel J, Mazzieri R and Khosrotehrani K. Skin wound inflammation modulated by IL-17

producing macrophages is dependent on IL-23. *Australasian Journal of Dermatology*. 2016; 57: 31-.

182. Lee JS, Seppanen E, Patel J, Rodero MP and Khosrotehrani K. ST2 receptor invalidation maintains wound inflammation, delays healing and increases fibrosis. *Exp Dermatol*. 2016; 25: 71-4. doi: 10.1111/exd.12833

183. Legrand J, Villani R, Roy E and Khosrotehrani K. STAT5 activation in the dermal papilla is important for hair follicle growth phase induction, hair follicle regeneration and wound healing. *Journal of Investigative Dermatology*. 2016; 136: S198-S. doi: 10.1016/j.jid.2016.04.014

184. Legrand JMD, Roy E, Ellis JJ, Francois M, Brooks AJ and Khosrotehrani K. STAT5 activation in the dermal papilla is important for hair follicle growth phase induction. *Journal of Investigative Dermatology*. 2016; 136: 1781-91. doi: 10.1016/j.jid.2016.04.014

185. Leibowitz SM and Yan J. NF-kappa B pathways in the pathogenesis of Multiple Sclerosis and the therapeutic implications. *Frontiers in Molecular Neuroscience*. 2016; 9. doi: 8410.3389/fnmol.2016.00084

186. Leiva A, Fuenzalida B, Barros E, Sobrevia B, Salsoso R, Saez T, Villalobos R, Silva L, Chiarello I, Toledo F, Gutierrez J, Sanhueza C, Pardo F and Sobrevia L. Nitric Oxide is a central common metabolite in vascular dysfunction associated with diseases of human pregnancy. *Current Vascular Pharmacology*. 2016; 14: 237-59. doi: 10.2174/157016114666160222115158

187. Leiva A, Fuenzalida B, Salsoso R, Barros E, Toledo F, Gutierrez J, Pardo F and Sobrevia L. Tetrahydrobiopterin Role in human umbilical vein endothelial dysfunction in maternal supraphysiological hypercholesterolemia. *Biochimica Et Biophysica Acta-Molecular Basis of Disease*. 2016; 1862: 536-44. doi: 10.1016/j.bbdis.2016.01.021

188. Leiva A, Fuenzalida B, Westermeier F, Toledo F, Salomon C, Gutierrez J, Sanhueza C, Pardo F and Sobrevia L. Role for tetrahydrobiopterin in the fetoplacental endothelial dysfunction in maternal supraphysiological hypercholesterolemia. *Oxidative Medicine and Cellular Longevity*. 2016. doi: 10.1155/2016/5346327.

189. Leung A, Roberts MJ, Perera M and Pretorius CF. Fatal intraperitoneal hepatic bleeding due to metastatic deposit of unknown primary: a tribulation for a regional surgeon. *Australian and New Zealand Journal of Surgery*. 2016. doi: 10.1111/ans.13629

190. Lewindon PJ, Balouch F, Pereira TN, Puertolas-Lopez MV, Noble C, Wixey JA and Ramm GA. Transient liver elastography in unsedated control children: Impact of age and intercurrent illness. *Journal of Paediatrics and Child Health*. 2016; 52: 637-42.

191. Li J, Woods SL, Healey S, Beesley J, Chen XQ, Lee JS, Sivakumaran H, Wayte N, Nones K, Waterfall JJ, Pearson J, Patch AM, Senz J, Ferreira MA, Kaurah P, Mackenzie R, Heravi-Moussavi A, Hansford S, Lannagan TRM, Spurdle AB, Simpson PT, da Silva L, Lakhani SR, Clouston AD, Bettington M, Grimpén F, Busuttill RA, Di Costanzo N, Bousioutas A, Jeanjean M, Chong G, Fabre A, Olschwang S, Faulkner GJ, Bellos E, Coin L, Rioux K, Bathe OF, Wen XG, Martin HC, Neklason DW, Davis SR, Walker RL, Calzone KA, Avital I, Heller T, Koh C, Pineda M, Rudloff U, Quezado M, Pichurin PN, Hulick PJ, Weissman SM, Newlin A, Rubinstein WS, Sampson JE, Hamman K, Goldgar D, Poplawski N, Phillips K, Schofield L, Armstrong J, Kiraly-Borri C, Suthers GK, Huntsman DG, Foulkes WD, Carneiro F, Lindor NM, Edwards SL, French JD, Waddell N, Meltzer PS, Worthley DL, Schrader KA and Chenévix-Trench G. Point mutations in Exon 1B of APC reveal gastric adenocarcinoma and proximal polyposis of the stomach as a familial adenomatous polyposis variant. *American Journal of Human Genetics*. 2016; 98: 830-42. doi: 10.1016/j.ajhg.2016.03.001

192. Li R, Steyn FJ, Stout MB, Lee K, Cully TR, Calderon JC and Ngo ST. Development of a high-throughput method for real-time assessment of cellular metabolism in intact long skeletal muscle fibre bundles. *Journal of Physiology-London*. 2016; 594: 7197-213. doi: 10.1113/jp272988

193. Liang P, Liddle J, Fleming J and Gustafsson L. Family members' narratives of lifespaces: Mapping changes before and after a brain injury causing driving disruption. *Australian Occupational Therapy Journal*. 2016; 63: 164-74. doi: 10.1111/1440-1630.12258

194. Liddle J, Burdon M, Ireland D, Carter A, Kneupffer C, Milevskiy N, McBride S, Chenery H and Hall W. Balancing self-tracking and surveillance: legal, ethical and technological issues in using smartphones to monitor communication in people with health conditions. *Journal of Law and Medicine*. 2016; 24: 387-97.

195. Liddle J, Tan A, Liang P, Bennett S, Allen S, Lie DC and Pachana NA. The biggest problem we've ever had to face: how families manage driving cessation with people with dementia. *International Psychogeriatrics*. 2016; 28: 109-22. doi: 10.1017/s1041610215001441

196. Lindenberg R, Sieg MM, Meinzer M, Nachtigall L and Floel A. Neural correlates of unihemispheric and bihemispheric motor cortex stimulation in healthy young adults. *Neuroimage*. 2016; 140: 141-9. doi: 10.1016/j.neuroimage.2016.01.057

197. Liu C, Rohart F, Simpson PT, Khanna KK, Ragan MA and Le Cao K-A. Integrating multi-omics data to dissect mechanisms of DNA repair dysregulation in breast cancer. *Scientific Reports*. 2016; 6. doi: 34000 10.1038/srep34000

198. Liu C, Srihari S, Lal S, Gautier B, Simpson PT, Khanna KK, Ragan MA and Le Cao KA. Personalised pathway analysis reveals association between DNA repair pathway dysregulation and chromosomal instability in sporadic breast cancer. *Molecular oncology*. 2016; 10: 179-93. doi: 10.1016/j.molonc.2015.09.007

199. 212. Lorscheider J, Buzzard K, Jokubaitis V, Spelman T, Havrdova E, Horakova D, Trojano M, Izquierdo G, Girard M, Duquette P, Prat A, Lugaresi A, Grand'maison F, Grammond P, Hupperts R, Alroughani R, Sola P, Boz C, Pucci E, Lechner-Scott JG, Bergamaschi R, Oreja-Guevara C, Iuliano G, Van Pesch V, Granella F, Ramo-Tello C, Spitaleri D, Petersen T, Slee M, Verheul F, Ampara R, Amato MP, McCombe P, Vucic S, Sanchez Menoyo JL, Cristiano E, Barnett MH, Hodgkinson S, Olascoaga J, Saladino ML, Gray O, Shaw C, Moore F, Butzkueven H and Kalincik T. Defining secondary progressive multiple sclerosis. *Brain*. 2016; 139: 2395-405.

200. Lund ME, Greer J, Dixit A, Alvarado R, McCauley-Winter P, To J, Tanaka A, Hutchinson AT, Robinson MW, Simpson AM, O'Brien BA, Dalton JP and Donnelly S. A parasite-derived 68-mer peptide ameliorates autoimmune disease in murine models of Type 1 diabetes and multiple sclerosis. *Scientific Reports*. 2016; 6. doi: 10.1038/srep37789

201. Martin AK, Dzafic I, Robinson GA, Reutens D and Mowry B. Mentalizing in schizophrenia: A multivariate functional MRI study. *Neuropsychologia*. 2016; 93: 158-66. doi: 10.1016/j.neuropsychologia.2016.10.013

202. Martin AK, Gibson EC, Mowry B and Robinson GA. Verbal initiation, suppression, and strategy use and the relationship with clinical symptoms in schizophrenia. *Journal of the International Neuropsychological Society*. 2016; 22: 735-43.

203. McCart Reed AE, Kutasovic JR, Vargas AC, Jayanthan J, Al-Murrani A, Reid LE, Chambers R, Da Silva L, Melville L, Evans E, Porter A, Papadimos D, Thompson EW, Lakhani SR and Simpson PT. An epithelial to mesenchymal transition programme does not usually drive the phenotype of invasive lobular carcinomas. *Journal of Pathology*. 2016; 238: 489-94.

204. McCarthy KL and Paterson DL. Community-acquired *Pseudomonas aeruginosa* bloodstream infection: a classification

- that should not falsely reassure the clinician. *European Journal of Clinical Microbiology and Infectious Diseases*. 2016; 1-9. doi: 10.1007/s10096-016-2852-0
205. McCarthy KL and Paterson DL. Long-term mortality following *Pseudomonas aeruginosa* bloodstream infection. *Journal of Hospital Infection*. 2016. doi: 10.1016/j.jhin.2016.11.014
 206. McCombe P, Raj M, Henderson R and Blum S. A case series of patients with autoimmune myasthenia gravis in association with invasive thymoma. *Journal of Clinical Neuromuscular Disease*. 2016; 17: 129-34. doi: 10.1097/CND.0000000000000101
 207. McFadden M, Gordon A, Leong G, Ward D and Scott JG. Pancreatitis associated with metformin used for management of clozapine-related weight gain. *Australian and New Zealand Journal of Psychiatry*. 2016; 50: 701-2. doi: 10.1177/0004867416631830
 208. McGrath JJ, Alati R, Clavarino A, Williams GM, Bor W, Najman JM, Connell M and Scott JG. Age at first tobacco use and risk of subsequent psychosis-related outcomes: A birth cohort study. *Australian and New Zealand Journal of Psychiatry*. 2016; 50: 577-83. doi: 10.1177/0004867415587341
 209. McInerney-Leo AM, Le Goff C, Leo PJ, Kenna TJ, Keith P, Harris JE, Steer R, Bole-Feyso C, Nitschke P, Kielty C, Brown MA, Zankl A, Duncan EL and Cormier-Daire V. Mutations in *LTBP3* cause acromicric dysplasia and geleophysic dysplasia. *Journal of Medical Genetics*. 2016; 53: 457-64. doi: 10.1136/jmedgenet-2015-103647
 210. McKeon GL, Scott JG, Spooner DM, Ryan AE, Blum S, Gillis D, Langguth D and Robinson GA. Cognitive and Social Functioning Deficits after Anti-N-Methyl-D-Aspartate Receptor Encephalitis: An Exploratory Case Series. *Journal of the International Neuropsychological Society*. 2016; 22: 828-38. doi: 10.1017/s1355617716000679
 211. McMullan BJ, Andresen D, Blyth CC, Avent ML, Bowen AC, Britton PN, Clark JE, Cooper CM, Curtis N, Goeman E, Hazelton B, Haeusler GM, Khatami A, Newcombe JP, Osowski J, Palasanthiran P, Starr M, Lai T, Nourse C, Francis JR, Isaacs D and Bryant PA. Antibiotic duration and timing of the switch from intravenous to oral route for bacterial infections in children: systematic review and guidelines. *Lancet Infectious Diseases*. 2016; 16: E139-E52. doi: 10.1016/s1473-3099(16)30024-x
 212. McNamara JF, Paterson DL, Allworth A, Presneill J, O'Connell P and Henderson RD. Re-activation of varicella zoster virus associated with anterior spinal cord stroke in pregnancy. *Infectious Diseases*. 2016; 48: 705-7. doi: 10.1080/23744235.2016.1185535
 213. Meier MH, Hall W, Caspi A, Belsky DW, Cerda M, Harrington HL, Houts R, Poulton R and Moffitt TE. Which adolescents develop persistent substance dependence in adulthood? Using population-representative longitudinal data to inform universal risk assessment. *Psychological Medicine*. 2016; 46: 877-89. doi: 10.1017/s0033291715002482
 214. Meinzer M, Darkow R, Lindenberg R and Floel A. Electrical stimulation of the motor cortex enhances treatment outcome in post-stroke aphasia. *Brain*. 2016; 139: 1152-63. doi: 10.1093/brain/aww002
 215. Meinzer M, Darkow R, Lindenberg R and Flöel A. Electrical stimulation of the motor cortex enhances treatment outcome in post-stroke aphasia. *Brain*. 2016; 139: 1152-63.
 216. Meinzer M, Yetim O, McMahon K and de Zubicaray G. Brain mechanisms of semantic interference in spoken word production: An anodal transcranial Direct Current Stimulation (atDCS) study. *Brain and Language*. 2016; 157: 72-80. doi: 10.1016/j.bandl.2016.04.003
 217. Meinzer M, Yetim Ö, McMahon K and de Zubicaray G. Brain mechanisms of semantic interference in spoken word production: An anodal transcranial Direct Current Stimulation (atDCS) study. *Brain and Language*. 2016; 157-158: 72-80.
 218. Menon R, Sheller S, Saade G and Salomon C. Oxidative stress induced amnion cell derived exosomes produce inflammatory changes in myometrial cells: a fetomaternal signaling in human parturition. *Placenta*. 2016; 45: 111-2.
 219. Merino-Gonzalez C, Zuniga FA, Escudero C, Ormazabal V, Reyes C, Nova-Lamperti E, Salomon C and Aguayo C. Mesenchymal Stem Cell-Derived Extracellular Vesicles Promote Angiogenesis: Potencial Clinical Application. *Frontiers in Physiology*. 2016; 7. doi: 10.3389/fphys.2016.00024
 220. Meurk C, Ford P, Sharma R, Fitzgerald L and Gartner C. Views and preferences for nicotine products as an alternative to smoking: a focus group study of people living with mental disorders. *International Journal of Environmental Research and Public Health*. 2016; 13. doi: 1166 10.3390/ijerph13111166
 221. Meurk C, Fraser D, Weier M, Lucke J, Carter A and Hall W. Assessing the place of neurobiological explanations in accounts of a family member's addiction. *Drug and Alcohol Review*. 2016; 35: 461-9. doi: 10.1111/dar.12318
 222. Meurk C, Morphet K, Carter A, Weier M, Lucke J and Hall W. Scepticism and hope in a complex predicament: People with addictions deliberate about neuroscience. *International Journal of Drug Policy*. 2016; 32: 34-43. doi: 10.1016/j.drugpo.2016.03.004
 223. Milevskiy MJG, Al-Ejeh F, Saunus JM, Northwood KS, Bailey PJ, Betts JA, McCart Reed AE, Nephew KP, Stone A, Gee JMW, Dowhan DH, Dray E, Shewan AM, French JD, Edwards SL, Clark SJ, Lakhani SR and Brown MA. Long-range regulators of the lncRNA HOTAIR enhance its prognostic potential in breast cancer. *Human Molecular Genetics*. 2016.
 224. Miller SM, Sullivan SM, Ireland Z, Chand KK, Colditz PB and Bjorkman ST. Neonatal seizures are associated with redistribution and loss of GABAA alpha-subunits in the hypoxic-ischaemic pig. *Journal of Neurochemistry*. 2016. doi: 10.1111/jnc.13746
 225. Mitchell MD, Rice GE, Vaswani K, Kvaskoff D and Peiris HN. Differential Regulation of Eicosanoid and Endocannabinoid Production by Inflammatory Mediators in Human Choriondecidua. *Plos One*. 2016; 11. doi: e0148306 10.1371/journal.pone.0148306
 226. Mitchell MD, Scholz-Romero K, Reed S, Peiris HN, Koh YQ, Meier S, Walker CG, Burke CR, Roche JR, Rice GE and Salomon C. Plasma exosome profiles from dairy cows with divergent fertility phenotypes. *Journal of Dairy Science*. 2016; 99: 7590-601. doi: 10.3168/jds.2016-11060
 227. Mitra J, Shen K-k, Ghose S, Bourgeat P, Fripp J, Salvado O, Pannek K, Taylor DJ, Mathias JL and Rose S. Statistical machine learning to identify traumatic brain injury (TBI) from structural disconnections of white matter networks. *NeuroImage*. 2016; 129: 247-59.
 228. Moe AA, Scott JG, Burne TH and Eyles DW. Neural changes induced by antipsychotic administration in adolescence: A review of studies in laboratory rodents. *J Psychopharmacol*. 2016; 30: 771-94. doi: 10.1177/0269881116654776
 229. Molehin D, Nitert MD and Richard K. Prenatal exposures to multiple thyroid hormone disruptors: effects on glucose and lipid metabolism. *Journal of Thyroid Research*. 2016. doi: 8765049 10.1155/2016/8765049
 230. Monteiro LJ, Norman JE, Rice GE and Illanes SE. Fetal programming and gestational diabetes mellitus. *Placenta*. 2016; 48: S54-S60. doi: 10.1016/j.placenta.2015.11.015
 231. Morganella S, Alexandrov LB, Glodzik D, Zou X, Davies H, Staaf J, Sieuwerts AM, Brinkman AB, Martin S, Ramakrishna M, Butler A, Kim H-Y, Borg A, Sotiriou C, Futreal PA, Campbell PJ, Span PN, Van Laere S, Lakhani SR, Eyfjord JE, Thompson AM, Stunnenberg HG, van de Vijver MJ, Martens JWM, Borresen-Dale A-L, Richardson AL, Kong G, Thomas G, Sale J, Rada C, Stratton MR, Birney E and Nik-Zainal S. The topography of mutational processes in breast can-

- cer genomes. *Nature Communications*. 2016; 7: 1-11. doi: 10.1038/ncomms11383
232. Morphet K, Carter A, Hall W and Gartner C. A qualitative study of smokers' views on brain-based explanations of tobacco dependence. *International Journal of Drug Policy*. 2016; 29: 41-8. doi: 10.1016/j.drugpo.2015.12.011
 233. Moschidou D, Corcelli M, Hau KL, Ekwalla VJ, Behmoaras JV, De Coppi P, David AL, Bou-Gharios G, Cook HT, Pusey CD, Fisk NM and Guillot PV. Human chorionic stem cells: podocyte differentiation and potential for the treatment of Alport syndrome. *Stem Cells and Development*. 2016; 25: 395-404. doi: 10.1089/scd.2015.0305
 234. Mostafa SS, Awal MA, Ahmad M and Rashid MA. Voiceless Bangla vowel recognition using sEMG signal. *Springerplus*. 2016; 5. doi: 1522 10.1186/s40064-016-3170-9
 235. Muerza-Cascante ML, Shokoohmand A, Khosrotehrani K, Haylock D, Dalton PD, Huttmacher DW and Loessner D. Endosteal-like extracellular matrix expression on melt electrospun written scaffolds. *Acta Biomaterialia*. 2016. doi: 10.1016/j.actbio.2016.12.040
 236. Murphy VE, Jensen ME, Mattes J, Hensley MJ, Giles WB, Peek MJ, Bisits A, Callaway LK, McCaffery K, Barrett HL, Colditz PB, Seeho SK, Attia J, Searles A, Doran C, Powell H and Gibson PG. The Breathing for Life Trial: a randomised controlled trial of fractional exhaled nitric oxide (FENO)-based management of asthma during pregnancy and its impact on perinatal outcomes and infant and childhood respiratory health. *BMC Pregnancy Childb*. 2016; 16. doi: 10.1186/s12884-016-0890-3
 237. Nabizadeh J, Manthey H, Boyle G, Steyn F, Woodruff T and Rolfe B. The complement C3a receptor contributes to melanoma tumorigenesis by regulating neutrophil and CD4(+) T cell responses. *European Journal of Immunology*. 2016; 46: 510-.
 238. Nabizadeh JA, Manthey HD, Steyn FJ, Chen WY, Widiapradja A, Akhir FNM, Boyle GM, Taylor SM, Woodruff TM and Rolfe BE. The complement c3a receptor contributes to melanoma tumorigenesis by inhibiting neutrophil and CD4(+) T cell responses. *Journal of Immunology*. 2016; 196: 4783-92. doi: 10.4049/jimmunol.1600210
 239. Najman JM, Plotnikova M, Williams GM, Alati R, Mamun AA, Scott JG, Wray N and Clavarino AM. Trajectories of maternal depression: a 27-year population-based prospective study. *Epidemiology and Psychiatric Sciences*. 2016; 1-10. doi: 10.1017/S2045796015001109
 240. Nation RL, Garonzik SM, Li J, Thamlikitkul V, Giamarellos-Bourboulis EJ, Paterson DL, Turnidge JD, Forrest A and Silveira FP. Updated US and European Dose Recommendations for Intravenous Colistin: How Do They Perform? *Clinical Infectious Diseases*. 2016; 62: 552-8. doi: 10.1093/cid/civ964
 241. Natoli R, Jiao HH, Barnett NL, Fernando N, Valter K, Provis JM and Rutar M. A model of progressive photo-oxidative degeneration and inflammation in the pigmented C57BL/6J mouse retina. *Experimental Eye Research*. 2016; 147: 114-27. doi: 10.1016/j.exer.2016.04.015
 242. Newman MP, Blum S, Wong RCW, Scott JG, Prain K, Wilson RJ and Gillis D. Autoimmune encephalitis. *Internal Medicine Journal*. 2016; 46: 148-57. doi: 10.1111/imj.12974
 243. Newton RU, Galvao DA, Hart N, Taaffe D and Spry N. Endogenous exercise medicine: mechanisms influencing prostate cancer biology. *British Journal of Urology International*. 2016; 118: 10-.
 244. Ng F, Scott JG and Bruxner G. Antineuronal antibody screening in early onset-cognitive decline. *Australian and New Zealand Journal of Psychiatry*. 2016.
 245. Ng TM, Khong WX, Harris PNA, De PP, Chow A, Tambyah PA and Lye DC. Empiric Piperacillin-Tazobactam versus Carbapenems in the Treatment of Bacteraemia Due to Extended-Spectrum Beta-Lactamase-Producing Enterobacteriaceae. *Plos One*. 2016; 11. doi: e0153696 10.1371/journal.pone.0153696
 246. Ngo S. Neurodegeneration: an endocrine and metabolic perspective. *Clinical Endocrinology*. 2016; 84: 7-.
 247. Nikesitch N, Tao C, Lai K, Killingsworth M, Bae S, Wang M, Harrison S, Roberts TL and Ling SCW. Predicting the response of multiple myeloma to the proteasome inhibitor Bortezomib by evaluation of the unfolded protein response. *Blood Cancer Journal*. 2016; 6. doi: e432 10.1038/bcj.2016.40
 248. Nikles J, Mitchell GK, Hardy J, Senior H, Carmont SA, Schluter PJ, Vora R, Currow D and Yelland M. Single-patient multiple crossover studies to determine the effectiveness of paracetamol in relieving pain suffered by patients with advanced cancer taking regular opioids: A pilot study. *Palliative Medicine*. 2016; 30: 800-2. doi: 10.1177/0269216316635012
 249. Nikles J, Mitchell GK, Hardy J, Senior H, Carmont S-A, Schluter PJ, Vora R, Currow D and Yelland M. Single patient multiple cross-over studies to determine the effectiveness of paracetamol in relieving pain suffered by patients with advanced cancer taking regular opioids: a pilot study. *Palliative Medicine: a multiprofessional journal*. 2016; 30: 1-3.
 250. Nik-Zainal S, Davies H, Staaf J, ... Simpson PT, ... Lakhani SR, Eyfjord JE, Thompson AM, Birney E, Stunnenberg HG, Van De Vijver MJ, Martens JWM, Borresen-Dale AL, Richardson AL, Kong G, Thomas G and Stratton MR. Landscape of somatic mutations in 560 breast cancer whole-genome sequences. *Nature*. 2016; 534: 47-+. doi: 10.1038/nature17676
 251. Nimphius S, McGuigan MR, Suchomel TJ and Newton RU. Variability of a "force signature" during windmill softball pitching and relationship between discrete force variables and pitch velocity. *Human movement science*. 2016; 47: 151-8. doi: 10.1016/j.humov.2016.03.005
 252. Nuzhat Z, Kinhal V, Sharma S, Rice GE, Joshi V and Solomon C. Tumour-derived exosomes as a signature of pancreatic cancer - liquid biopsies as indicators of tumour progression. *Oncotarget*. 2016. doi: 10.18632/oncotarget.13973
 253. O'Grady KF, Grimwood K, Sloots TP, Whitley DM, Acworth JP, Phillips N, Goyal V and Chang AB. Prevalence, codetection and seasonal distribution of upper airway viruses and bacteria in children with acute respiratory illnesses with cough as a symptom. *Clinical Microbiology and Infection*. 2016; 22: 527-34. doi: 10.1016/j.cmi.2016.02.004
 254. Osthoff M, Siegemund M, Balestra G, Abdul-Aziz MH and Roberts JA. Prolonged administration of beta-lactam antibiotics - a comprehensive review and critical appraisal. *Swiss Medical Weekly*. 2016; 146.
 255. Harris PNA, McNamara JF, Lye DC, Davis JS, Bernard L, Cheng AC, Doi Y, Fowler VG, Kaye KS, Leibovici L, Lipman J, Llewelyn MJ, Munoz-Price S, Paul M, Peleg AY, Rodriguez-Bano J, Rogers BA, Seifert H, Thamlikitkul V, Thwaites G, Tong SYC, Turnidge J, Utili R, Webb SAR and Paterson DL. Proposed primary endpoints for use in clinical trials that compare treatment options for bloodstream infection in adults: A consensus definition. *Clinical Microbiology and Infection*. 2016; doi: 10.1016/j.cmi.2016.10.023
 256. Pachana NA, Jetten J, Gustafsson L and Liddle J. To be or not to be (an older driver): social identity theory and driving cessation in later life. *Ageing and Society*. 2016: 1-12.
 257. Palacios J, Cifuentes F, Valderrama JA, Benites J, Rios D, Gonzalez C, Chiong M, Cartes-Saavedra B, Lafourcade C, Wyneken U, Gonzalez P, Owen GI, Pardo F, Sobrevia L and Calderon PB. Modulatory Effect of 2-(4-Hydroxyphenyl) amino-1,4-naphthoquinone on Endothelial Vasodilation in Rat Aorta. *Oxidative Medicine and Cellular Longevity*. 2016. doi: 3939540 10.1155/2016/3939540

258. Paliwoda M, New K and Bogossian F. Neonatal Early Warning Tools for recognising and responding to clinical deterioration in neonates cared for in the maternity setting: A retrospective case-control study. *International Journal of Nursing Studies*. 2016; 61: 125-35. doi: 10.1016/j.ijnurstu.2016.06.006
259. Patel J, Donovan P and Khosrotehrani K. Concise Review: Functional Definition of Endothelial Progenitor Cells: A Molecular Perspective. *Stem Cells Translational Medicine*. 2016; 5: 1302-6. doi: 10.5966/sctm.2016-0066
260. Patel J, Seppanen EJ, Rodero MP, Wong HY, Donovan P, Neufeld Z, Fisk NM, Francois M and Khosrotehrani K. Functional Definition of Progenitors Versus Mature Endothelial Cells Reveals Key SoxF-Dependent Differentiation Process. *Circulation*. 2016; 135: 786-805. doi: 10.1161/circulationaha.116.024754
261. Patel J, Wong HY, Wang W, Alexis J, Shafiee A, Stevenson AJ, Gabrielli B, Fisk NM and Khosrotehrani K. Self-renewal and high proliferative colony forming capacity of late-out-growth endothelial progenitors is regulated by cyclin-dependent kinase inhibitors driven by notch signaling. *Stem Cells*. 2016; 34: 902-12. doi: 10.1002/stem.2262
262. Patel V, Chisholm D, Parikh R, Charlson FJ, Degenhardt L, Dua T, Ferrari AJ, Hyman S, Laxminarayan R, Levin C, Lund C, Medina Mora ME, Petersen I, Scott JG, Shidhaye R, Vijayakumar L, Thornicroft G, Whiteford H and Group obotDMA. Addressing the burden of mental, neurological, and substance use disorders: key messages from Disease Control Priorities, 3rd edition. *The Lancet*. 2016; 387: 1672-85. doi: 10.1016/s0140-6736(15)00390-6
263. Pateman K, Ford P, Fitzgerald L, Mutch A, Yuke K, Bonevski B and Gartner C. Stuck in the catch 22: attitudes towards smoking cessation among populations vulnerable to social disadvantage. *Addiction*. 2016; 111: 1048-56. doi: 10.1111/add.13253
264. Paterson DL and Harris PNA. Colistin resistance: a major breach in our last line of defence. *Lancet Infectious Diseases*. 2016; 16: 132-3. doi: 10.1016/s1473-3099(15)00463-6
265. Peiris HN, Vaswani K, Almughlliq F, Koh YQ and Mitchell MD. Review: Eicosanoids in preterm labor and delivery: potential roles of exosomes in eicosanoid functions. *Placenta*. 2016. doi:10.1016/j.placenta.2016.12.013
266. Peiris HN, Vaswani K, Koh YQ, Oh L, Reed S, and Mitchell MD. When is a prostaglandin not a prostaglandin? *Placenta*. 2016; 45: 125-. Vol.45, p.125-125
267. Pelekanos RA, Sardesai VS, Futrega K, Lott WB, Kuhn M and Doran MR. Isolation and Expansion of Mesenchymal Stem/Stromal Cells Derived from Human Placenta Tissue. *Jove-Journal of Visualized Experiments*. 2016. doi: e54204 10.3791/54204
268. Pelzer E, Gomez-Arango LF, Barrett HL and Nitert MD. Maternal health and the placental microbiome. *Placenta*. 2016. Doi: 10.1016/j.placenta.2016.12.003
269. Perceval G, Floel A and Meinzer M. Can transcranial direct current stimulation counteract age-associated functional impairment? *Neuroscience and Biobehavioral Reviews*. 2016; 65: 157-72. doi: 10.1016/j.neubiorev.2016.03.028
270. Perera M, Divakumar P, Roberts M and Chung E. Randomised trial comparing suture techniques and types of urinary catheters in vesicourethral anastomotic tensile strength: a porcine model. *BRITISH JOURNAL OF Urology International*. 2016; 117: 60-.
271. Peters AA, Milevskiy MJ, Lee WC, Curry MC, Smart CE, Saunus JM, Reid L, da Silva L, Marcial DL, Dray E, Brown MA, Lakhani SR, Roberts-Thomson SJ and Monteith GR. The calcium pump plasma membrane Ca(2+)-ATPase 2 (PMCA2) regulates breast cancer cell proliferation and sensitivity to doxorubicin. *Scientific Reports*. 2016; 6: 25505. doi: 10.1038/srep25505
272. Phillips NM, Cervin A, Earnshaw J and Sidjabat HE. Melioidosis in a patient with chronic rhinosinusitis. *Journal of Laryngology and Otolaryngology*. 2016; 130: S60-S2.
273. Punja S, Nikles CJ, Senior H, Mitchell G, Schmid CH, Heusler H, Witmans M and Vohra S. Melatonin in Youth: N-of-1 trials in a stimulant-treated ADHD Population (MYNAP): study protocol for a randomized controlled trial. *Trials*. 2016; 17. doi: 375 10.1186/s13063-016-1499-6
274. Punja S, Schmid CH, Hartling L, Urichuk L, Nikles CJ and Vohra S. To meta-analyze or not to meta-analyze? A combined meta-analysis of N-of-1 trial data with RCT data on amphetamines and methylphenidate for pediatric ADHD. *J Clin Epidemiol*. 2016; 76: 76-81.
275. Punja S, Shamseer L, Hartling L, Urichuk L, Vandermeer B, Nikles J and Vohra S. Amphetamines for attention deficit hyperactivity disorder (ADHD) in children and adolescents. *Cochrane Database of Systematic Reviews*. 2016; 2016.
276. Punja S, Xu D, Schmid CH, Hartling L, Urichuk L, Nikles CJ and Vohra S. Amphetamines and methylphenidate for pediatric ADHD: a systematic review and meta-analysis of n-of-1 evidence. *Journal of Clinical Epidemiology*. 2016; 76: 65-75. doi: 10.1016/j.jclinepi.2016.03.026
277. Quek H, Luff J, Cheung K, Kozlov SV, Gatei M, Lee CS, Bellingham M, Noakes P, Lim YC, Barnett N, Dingwall S, Wolvetang E, Mashimo T, Roberts T and Lavin MF. Neuroinflammation drives the neuronal degenerative phenotype in a rat model of Ataxia-telangiectasia. *European Journal of Immunology*. 2016; 46: 1041-2.
278. Quek H, Luff J, Cheung K, Kozlov SV, Gatei M, Lee CS, Bellingham MC, Noakes PG, Lim YC, Barnett NL, Dingwall S, Wolvetang E, Mashimo T, Roberts TL and Lavin MF. A rat model of ataxia-telangiectasia: evidence for a neurodegenerative phenotype. *Human Molecular Genetics*. 2016. doi: 10.1093/hmg/ddw371
279. Quek H, Luff J, Cheung K, Kozlov SV, Gatei M, Lee CS, Bellingham MC, Noakes PG, Lim YC, Barnett NL, Dingwall S, Wolvetang E, Mashimo T, Roberts TL and Lavin MF. Rats with a missense mutation in Atm display neuroinflammation and neurodegeneration subsequent to accumulation of cytosolic DNA following unrepaired DNA damage. *Journal of Leukocyte Biology*. 2016. doi: 10.1189/jlb.4VMA0716-316R
280. Racine E, Forlini C, Aspler J and Chandler J. Complementary and Alternative Medicine in the Context of Earlier Diagnoses of Alzheimer's Disease: Opening the Conversation to Prepare Ethical Responses. *Journal of Alzheimers Disease*. 2016; 51: 1-9. doi: 10.3233/jad-150534
281. Rafiei N, Peh AM, Righi E, Harris P and Paterson DL. Central nervous system nocardiosis in Queensland A report of 20 cases and review of the literature. *Medicine*. 2016; 95. doi: e5255 10.1097/md.00000000000005255
282. Ramin C, Nitert MD, Callaway LK and Barrett HL. Expression of hexosamine signaling pathway genes in placenta from women with gestational diabetes mellitus (GDM). *Clinical Endocrinology*. 2016; 84: 24-.
283. Rayner CL, Bottle SE, Gole GA, Ward MS and Barnett NL. Real-time quantification of oxidative stress and the protective effect of nitroxide antioxidants. *Neurochemistry International*. 2016; 92: 1-12. doi: 10.1016/j.neuint.2015.11.003
284. McCart Reed AE, Kutasovic JR, Vargas AC, Jayanthan J, Al-Murrani A, Reid LE, Chambers R, Da Silva L, Melville L, Evans E, Porter A, Papadimos D, Thompson EW, Lakhani SR and Simpson PT. An epithelial to mesenchymal transition programme does not usually drive the phenotype of invasive lobular carcinomas. *Journal of Pathology*. 2016; 238: 489-94. doi: 10.1002/path.4668
285. Rice GE. Chairman's preface. *Placenta*. 2016; 48: S2-S. doi: 10.1016/j.placenta.2016.08.087
286. Riquelme JA, Westermeier F, Hall AR, Vicencio JM, Pedrozo

- Z, Ibacache M, Fuenzalida B, Sobrevia L, Davidson SM, Yellon DM, Sanchez G and Lavandero S. Dexmedetomidine protects the heart against ischemia-reperfusion injury by an endothelial eNOS/NO dependent mechanism. *Pharmacological Research*. 2016; 103: 318-27. doi: 10.1016/j.phrs.2015.11.004
287. Roberts M, Chow C, Schirra H, Richards R, Buck M, Doi S, Samaratunga H, Yaxley J, Lavin MF and Gardiner RA. A new prostate-based biofluid for the detection of prostate cancer and diagnostic performance comparison using mRNA biomarkers. *British Journal of Urology International*. 2016; 117: 50-1.
288. Roberts MJ, Bennett HY, Harris PN, Holmes M, Grummet J, Naber K and Wagenlehner FME. Prostate biopsy-related infection: a systematic review of risk factors, prevention strategies, and management approaches. *Urology*. 2016. doi: 10.1016/j.urol.2016.12.011
289. Roberts MJ and Doi SA. Prostate biopsy, targeted prophylaxis and infectious complications: a critique of methods used. *British Journal of Urology International*. 2016; 117: 719-21. doi: 10.1111/bju.13466
290. Roberts MJ, Hattwell JPN, Chow CWK, Lavin MF, Pierens GK, Gardiner RA and Schirra HJ. Tartrate inhibition of prostatic acid phosphatase improves seminal fluid metabolite stability. *Metabolomics*. 2016; 12. doi: 10.1007/s11306-016-1102-x
291. Roberts MJ, Richards RS, Chow CW, Doi SA, Schirra HJ, Buck M, Samaratunga H, Perry-Keene J, Payton D, Yaxley J, Lavin MF and Gardiner RA. Prostate-based biofluids for the detection of prostate cancer: A comparative study of the diagnostic performance of cell-sourced RNA biomarkers. *Prostate Int*. 2016; 4: 97-102. doi: 10.1016/j.pnrl.2016.04.002
292. Roberts MJ, Yaxley JW, Coughlin GD, Gianduzzo TRJ, Esler RC, Dunlison NT, Chambers SK, Medcraft RJ, Chow CWK, Schirra HJ, Richards RS, Kienzle N, Lu M, Brereton I, Samaratunga H, Perry-Keene J, Payton D, Oyama C, Doi SA, Lavin MF and Gardiner RA. Can atorvastatin with metformin change the natural history of prostate cancer as characterized by molecular, metabolomic, imaging and pathological variables? A randomized controlled trial protocol. *Contemporary Clinical Trials*. 2016; 50: 16-20. doi: 10.1016/j.cct.2016.06.014
293. Rohart F, Mason EA, Matigian N, Mosbergen R, Korn O, Chen T, Butcher S, Patel J, Atkinson K, Khosrotehrani K, Fisk NM, Le Cao KA and Wells CA. A molecular classification of human mesenchymal stromal cells. *PeerJ*. 2016; 4: e1845. doi: 10.7717/peerj.1845
294. Rose M, Nickels L, Togher L, Meinzer M, Rai T, Godecke E, Kim J, Cadilhac D, Pierce J, Foster A, Hurley M and Copland DA. Progress on COMPARE: A randomised controlled trial comparing constraint-induced and multi-modal aphasia therapy to usual care in people with chronic aphasia. *International Journal of Stroke*. 2016; 11: 17-.
295. Rowe C, Law M, Palmer J, MacGregor S, Hayward N and Khosrotehrani K. Survival in patients with multiple primary melanomas vs. single primary melanoma. *Australasian Journal of Dermatology*. 2016; 57: 4-.
296. Rowe C, Tang F, Hughes MC, Rodero M, Malt M, Lambie D, Barbour A, Hayward N, Smithers BM, Green A and Khosrotehrani K. Prognostic value of nomograms incorporating biomarkers vs. sentinel node status in patients with stage IB and II melanoma. *Australasian Journal of Dermatology*. 2016; 57: 3-.
297. Rowe CJ, Tang F, Hughes MCB, Rodero MP, Malt M, Lambie D, Barbour A, Hayward NK, Smithers BM, Green AC and Khosrotehrani K. Molecular markers to complement sentinel node status in predicting survival in patients with high-risk locally invasive melanoma. *International Journal of Cancer*. 2016; 139: 664-72. doi: 10.1002/ijc.30085
298. Roxbury T, McMahon K, Coulthard A and Copland DA. An fMRI study of concreteness effects during spoken word recognition in aging. Preservation or attenuation? *Frontiers in aging neuroscience*. 2016; 7. doi: 10.1186/1744-9081-10-34
299. Roy E, Neufeld Z, Cerone L, Wong HY, Hodgson S, Livet J and Khosrotehrani K. Bimodal behaviour of interfollicular epidermal progenitors regulated by hair follicle position and cycling. *Embo Journal*. 2016; 35: 2658-70. doi: 10.15252/embj.201693806
300. Roy E, Neufeld Z, Cerone L, Wong HY, Hodgson S, Livet J and Khosrotehrani K. Dual proliferation behaviour of epidermal progenitors. *Australasian Journal of Dermatology*. 2016; 57: 36-.
301. Roy E, Wong HY and Khosrotehrani K. Epidermal clonal proliferative response upon UVB irradiation is bimodal. *Australasian Journal of Dermatology*. 2016; 57: 6-7.
302. Saez T, Salsoso R, Sanhueza C, Pardo F, Leiva A, Faas M and Sobrevia L. Gestational diabetes and feto-placental endothelial dysfunction: role of exosomes from human umbilical vein endothelial cells on l-arginine/no signalling pathway. *Placenta*. 2016; 45: 111-.
303. Salomon C and Rice GE. Placental exosomes in normal and complicated pregnancy. *American Journal of Obstetrics and Gynecology* 2016; 214: 766-7. doi: 10.1016/j.ajog.2016.02.015
304. Salomon C and Rice GE. Response to Comment on Salomon et al. Gestational Diabetes Mellitus Is Associated With Changes in the Concentration and Bioactivity of Placenta-Derived Exosomes in Maternal Circulation Across Gestation. *Diabetes* 2016;65:598-609. *Diabetes*. 2016; 65: e26-7. doi: 10.2337/dbi16-0016
305. Salomon C and Rice GE. Reply. *American Journal of Obstetrics and Gynecology* 2016; 214: 766-7. doi: 10.1016/j.ajog.2016.02.015
306. Salomon C and Rice GE. Could procoagulant cell-derived microparticles have a more crucial role in pregnancy complications rather than exosomes? *REPLY*. *American Journal of Obstetrics and Gynecology*. 2016; 214: 766-7.
307. Salomon C, Scholz-Romero K, Sarker S, Sweeney E, Kobayashi M, Correa P, LoNgo S, Duncombe G, Mitchell MD, Rice GE and Illanes SE. Gestational diabetes mellitus is associated with changes in the concentration and bioactivity of placenta-derived exosomes in maternal circulation across gestation. *Diabetes*. 2016; 65: 598-609. doi: 10.2337/db15-0966
308. Sanhueza C, Araos J, Naranjo L, Barros E, Subiabre M, Toledo F, Gutierrez J, Chiarello DI, Pardo F, Leiva A and Sobrevia L. Nitric oxide and pH modulation in gynaecological cancer. *Journal of Cellular and Molecular Medicine*. 2016; 20: 2223-30. doi: 10.1111/jcmm.12921
309. Sanhueza C, Araos J, Naranjo L, Barros E, Toledo L, Subiabre M, Toledo F, Gutierrez J, Chiarello DI, Pardo F, Leiva A and Sobrevia L. Are NHE1 and inducible nitric oxide synthase involved in human ovarian cancer? *Pharmacological Research*. 2016; 105: 183-5. doi: 10.1016/j.phrs.2016.01.007
310. Sanhueza C, Araos J, Naranjo L, Villalobos R, Westermeier F, Salomon C, Beltran AR, Ramirez MA, Gutierrez J, Pardo F, Leiva A and Sobrevia L. Modulation of Intracellular pH in Human Ovarian Cancer. *Current Molecular Medicine*. 2016; 16: 23-32. doi: 10.2174/1566524016666151222143437
311. Sarkar S, Roberts LW, Phan MD, Tan L, Lo AW, Peters KM, Paterson DL, Upton M, Ulett GC, Beatson SA, Totsika M and Schembri MA. Comprehensive analysis of type 1 fimbriae regulation in fimB-null strains from the multidrug resistant *Escherichia coli* ST131 clone. *Molecular Microbiology*. 2016; 101: 1069-87. doi: 10.1111/mmi.13442
312. Sarna M, Alsaleh A, Lambert SB, Ware RS, Mhango LP,

- Mackay IM, Whiley DM, Sloots TP and Grimwood K. Respiratory Viruses In Neonates A Prospective, Community-based Birth Cohort Study. *Pediatric Infectious Disease Journal*. 2016; 35: 1355-7. doi: 10.1097/inf.0000000000001316
313. Saunus JM, Kalita-De Croft P, Lee FT, Al-Ejeh F, Lim M, Ensbey K, Niland C, Jeffree RL, Thomas P, Day BW, Rose S, Scott AM and Lakhani SR. Investigating the her2-3 dimer as a theranostic target in brain metastases. *Asia-Pac J Clin Onco*. 2016; 12: 114-.
314. Scott JG. Childhood antecedents of schizophrenia: Will understanding aetiopathogenesis result in schizophrenia prevention? *Social Psychiatry and Psychiatric Epidemiology*. 2016; 51: 493-5. doi: 10.1007/s00127-016-1184-9
315. Scott JG, Connell M, Betts K, Alati R, Najman J, Clavarino A, Mamun A and McGrath JJ. Hallucinations in adolescents and risk for mental disorders in adulthood: prospective evidence from the mup birth cohort study. *Australian and New Zealand Journal of Psychiatry*. 2016; 50: 129-.
316. Scott JG, Gillis D, Hargovan H, Gundarpi N, Ryan A, Prain K, Newman M, Wong R, Parry P and Blum S. The prevalence of autoimmune encephalitis in patients presenting with first-episode psychosis. *Australian and New Zealand Journal of Psychiatry*. 2016; 50: 128-.
317. Shafiee A, Patel J, Wong HY, Donovan P, Hutmacher DW, Fisk NM and Khosrotehrani K. Priming of endothelial colony-forming cells in a mesenchymal niche improves engraftment and vasculogenic potential by initiating mesenchymal transition orchestrated by NOTCH signaling. *The FASEB Journal*. 2016. doi: 10.1096/fj.201600937
318. Sharma R, Gartner CE and Hall WD. The challenge of reducing smoking in people with serious mental illness. *Lancet Respiratory Medicine*. 2016; 4: 835-44.
319. Sharma R, Lucas M, Ford P, Meurk C and Gartner CE. YouTube as a source of quit smoking information for people living with mental illness. *Tobacco Control*. 2016; 25: 634-7. doi: 10.1136/tobaccocontrol-2015-052713
320. Schleiger E, Wong A, Read S, Coulthard A and Finnigan S. Improved cerebral pathophysiology immediately following thrombectomy in acute ischaemic stroke: Monitoring via quantitative EEG. *Clinical Neurophysiology*. 2016; 127: 2832-3. doi: 10.1016/j.clinph.2016.06.001
321. Schleiger E, et al. Post-stroke EEG informs early prognosis of cognitive impairment. *Psychophysiology*. doi: 10.1111/psyp.12785
322. Schleiger E, et al. Resolution of cerebral pathophysiology immediately following thrombectomy in acute ischaemic stroke: Monitoring via quantitative EEG. *Clinical Neurophysiology*. 2016; 127: 2832-33.
323. Sheller S, Papaconstantinou J, Urrabaz-Garza R, Richardson L, Saade G, Salomon C and Menon R. Amnion-Epithelial-Cell-Derived Exosomes Demonstrate Physiologic State of Cell under Oxidative Stress. *Plos One*. 2016; 11. doi: e0157614 10.1371/journal.pone.0157614
324. Sheller-Miller SM, Lei J, Saade G, Salomon C, Burd I and Menon R. Feto-maternal trafficking of exosomes in murine pregnancy models. *Frontiers in Pharmacology*. 2016; 7.
325. Shine JM, Bissett PG, Bell PT, Koyejo O, Balsters JH, Gorgolewski KJ, Moodie CA and Poldrack RA. The dynamics of functional brain networks: integrated network states during cognitive task performance. *Neuron*. 2016; 92: 544-54. doi: 10.1016/j.neuron.2016.09.018
326. Sidjabat HE, Grann Hakansson E and Cervin A. Draft genome sequence of the oral commensal *Streptococcus oralis* 89a with interference activity against respiratory pathogens. *Genome Announcements*. 2016; 4: e01546-15-.
327. Silva L, Subiabre M, Araos J, Saez T, Salsoso R, Pardo F, Leiva A, San Martin R, Toledo F and Sobrevia L. Insulin/adenosine axis linked signalling. *Molecular Aspects of Medicine*. 2016.
328. Sinclair HA, Heney C, Sidjabat HE, George NM, Bergh H, Anuj SN, Nimmo GR and Paterson DL. Genotypic and phenotypic identification of *Aeromonas* species and CphA-mediated carbapenem resistance in Queensland, Australia. *Diagnostic Microbiology of Infectious Disease*. 2016; 85: 98-101. doi: 10.1016/j.diagmicrobio.2016.02.005
329. Skinner CL, Peeters G, Croci I, Bell K, Burton NW, Chambers S and Bolam K. Impact of a brief exercise program on the physical and psychosocial health of prostate cancer survivors: A pilot study. *Asia-Pac J Clin Onco*. 2016; 12: 225-34.
330. Skinner TL, Peeters G, Croci I, Bell KR, Burton NW, Chambers SK and Bolam KA. Impact of a brief exercise program on the physical and psychosocial health of prostate cancer survivors: A pilot study. *Asia-Pac J Clin Onco*. 2016; 12: 225-34. doi: 10.1111/ajco.12474
331. Smid M, Rodriguez-Gonzalez FG, Sieuwerts AM, ... Simpson PT, Lakhani SR, ... Martens JWM. Breast cancer genome and transcriptome integration implicates specific mutational signatures with immune cell infiltration. *Nature Communications*. 2016; 7: 12910.1-9. doi: 12910.10.1038/ncomms12910
332. Sobrevia L, Ooi L, Ryan S and Steinert JR. Nitric Oxide: A Regulator of Cellular Function in Health and Disease. *Oxidative Medicine and Cellular Longevity*. 2016. doi: 9782346 10.1155/2016/9782346
333. Sobrevia L, Salsoso R, Fuenzalida B, Barros E, Toledo L, Silva L, Pizarro C, Subiabre M, Villalobos R, Araos J, Toledo F, Gonzalez M, Gutierrez J, Farias M, Chiarello DI, Pardo F and Leiva A. Insulin Is a Key Modulator of Fetoplacental Endothelium Metabolic Disturbances in Gestational Diabetes Mellitus. *Frontiers in Physiology*. 2016; 7. doi: Unsp 119 10.3389/fphys.2016.00119
334. Srihari S, Kalimutho M, Lal S, Singla J, Patel D, Simpson PT, Khanna KK and Ragan MA. Understanding the functional impact of copy number alterations in breast cancer using a network modeling approach. *Molecular Biosystems*. 2016; 12: 963-72. doi: 10.1039/c5mb00655d
335. Srihari S, Singla J, Wong L, Simpson PT, Khanna KK and Ragan MA. Identifying genetic vulnerabilities in cancers driven by defects in DNA-damage response. *Cancer Research*. 2016; 76. doi: 10.1158/1538-7445.sabcs15-pd6-05
336. Steel A, Lucke J, Reid R and Adams J. A systematic review of women's and health professional's attitudes and experience of preconception care service delivery. *Family Practice*. 2016; 33: 588-95. doi: 10.1093/fampra/cmw094
337. Steinhäuser M, Flaisch T, Meinzer M and Schupp HT. Cognitive control modulates preferential sensory processing of affective stimuli. *Neuropsychologia*. 2016; 91: 435-43. doi: 10.1016/j.neuropsychologia.2016.09.009
338. Steyn FJ, Tolle V, Chen C and Epelbaum J. Neuroendocrine regulation of growth hormone secretion. *Comprehensive Physiology*. 2016; 6: 687-735.
339. Stillerova T, Liddle J, Gustafsson L, Lamont R and Silburn P. Could everyday technology improve access to assessments? A pilot study on the feasibility of screening cognition in people with Parkinson's disease using the Montreal Cognitive Assessment via Internet videoconferencing. *Australian Occupational Therapy Journal*. 2016; 63: 373-80. doi: 10.1111/1440-1630.12288
340. Stillerova T, Liddle J, Gustafsson L, Lamont R and Silburn P. Remotely Assessing Symptoms of Parkinson's Disease Using Videoconferencing: A Feasibility Study. *Neurology Research International*. 2016. doi: 4802570 10.1155/2016/4802570
341. Suetani S, Rosenbaum S, Scott JG, Curtis J and Ward PB. Bridging the gap: What have we done and what more can we do to reduce the burden of avoidable death in people with psychotic illness? *Epidemiology and Psychiatric Sci-*

ences. 2016; 25: 205-10. doi: 10.1017/s2045796015001043

342. Suetani S, Saha S, Milad A, Eakin E, Scott JG and McGrath JJ. Common mental disorders and recent physical activity status: findings from a National Community Survey. *Social Psychiatry and Psychiatric Epidemiology*. 2016; 1-8.

343. Suetani S, Waterreus A, Morgan V, Foley DL, Galletly C, Badcock JC, Watts G, McKinnon A, Castle D, Saha S, Scott JG and McGrath JJ. Correlates of physical activity in people living with psychotic illness. *Acta Psychiatrica Scandinavica*. 2016; 134: 129-37. doi: 10.1111/acps.12594

344. Taing MW, Ford PJ, Gartner CE and Freeman CR. Describing the role of Australian community pharmacists in oral healthcare. *International Journal of Pharmacy Practice*. 2016; 24: 237-46. doi: 10.1111/ijpp.12241

345. Talman P, Duong T, Vucic S, Mathers S, Venkatesh S, Henderson R, Rowe D, Schultz D, Edis R, Needham M, Macdonnell R, McCombe P, Birks C and Kiernan M. Identification and outcomes of clinical phenotypes in amyotrophic lateral sclerosis/motor neuron disease: Australian National Motor Neuron Disease observational cohort. *BMJ Open*. 2016; 6. doi: e012054 10.1136/bmjopen-2016-012054

346. Tan BY, Acs G, Apple SK, Badve S, Bleiweiss IJ, Brogi E, Calvo JP, Dabbs DJ, Ellis IO, Eusebi V, Farshid G, Fox SB, Ichihara S, Lakhani SR, Rakha EA, Reis-Filho JS, Richardson AL, Sahin A, Schmitt FC, Schnitt SJ, Siziopikou KP, Soares FA, Tse GM, Vincent-Salomon A and Tan PH. Phyllodes tumours of the breast: a consensus review. *Histopathology*. 2016; 68: 5-21. doi: 10.1111/his.12876

347. Tan HY, Steyn FJ, Huang L, Cowley M, Veldhuis JD and Chen C. Hyperphagia in male melanocortin 4 receptor deficient mice promotes growth independently of growth hormone. *J Physiol-London*. 2016; 594: 7309-26. doi: 10.1113/jp272770

348. Tarnow-Mordi W, Stenson B, Kirby A, Juszczak E, Donoghoe M, Deshpande S, Morley C, King A, Doyle LW, Fleck BW, Davis PG, Halliday HL, Hague W, Cairns P, Darlow BA, Fielder AR, Gebiski V, Marlow N, Simmer K, Tin W, Ghadge A, Williams C, Keech A, Wardle SP, Kecskes Z, Kluckow M, Gole G, Evans N, Malcolm G, Luig M, Wright I, Stack J, Tan K, Pritchard M, Gray PH, Morris S, Headley B, Dargaville P, Simes RJ and Brocklehurst P. Outcomes of two trials of oxygen-saturation targets in preterm infants. *New England Journal of Medicine*. 2016; 374: 749-60.

349. Tate RL, Perdices M, Rosenkoetter U, Shadish W, Vohra S, Barlow DH, Horner R, Kazdin A, Kratochwill T, McDonald S, Sampson M, Shamseer L, Togher L, Albin R, Backman C, Douglas J, Evans JJ, Gast D, Manolov R, Mitchell G, Nickels L, Nikles J, Ownsworth T, Rose M, Schmid CH and Wilson B. The Single-Case Reporting Guideline In Behavioural Interventions (SCRIBE) 2016 statement. *Canadian Journal of Occupational Therapy-Revue Canadienne D Ergotherapie*. 2016; 83: 184-95. doi: 10.1177/0008417416648124

350. Tefera TW, Wong YD, Barkl-Luke ME, Ngo ST, Thomas NK, McDonald TS and Borges K. Triheptanoin protects motor neurons and delays the onset of motor symptoms in a mouse model of amyotrophic lateral sclerosis. *Plos One*. 2016; 11. doi: e0161816 10.1371/journal.pone.0161816

351. Thomas HJ, Chan GCK, Scott JG, Connor JP, Kelly AB and Williams J. Association of different forms of bullying victimisation with adolescents' psychological distress and reduced emotional wellbeing. *Australian and New Zealand Journal of Psychiatry*. 2016; 50: 371-9. doi: 10.1177/0004867415600076

352. Thomas HJ, Connor JP, Baguley CM and Scott JG. Two sides to the story: adolescent and parent views on harmful intention in defining school bullying. *Aggressive Behaviour*. 2016. doi:10.1002/ab.21694

353. Tint MT, Ward LC, Soh SE, Aris IM, Chinnadurai A, Saw SM, Gluckman PD, Godfrey KM, Chong YS, Kramer MS, Yap F, Lingwood B and Lee YS. Estimation of fat-free mass in Asian neonates using bioelectrical impedance analysis. *British Journal of Nutrition*. 2016; 115: 1033-42. doi: 10.1017/S0007114515005486

354. Tong SYC, Nelson J, Paterson DL, Fowler VG, Howden BP, Cheng AC, Chatfield M, Lipman J, Van Hal S, O'Sullivan M, Robinson JO, Yahav D, Lye D and Davis JS. CAM-ERA2-combination antibiotic therapy for methicillin-resistant *Staphylococcus aureus* infection: study protocol for a randomised controlled trial. *Trials*. 2016; 17. doi: 170 10.1186/s13063-016-1295-3

355. Trembizki E, Guy R, Donovan B, Kaldor JM, Lahra MM and Whitley DM. Further evidence to support the individualised treatment of gonorrhoea with ciprofloxacin. *Lancet Infect Dis*. 2016; 16: 1005-6. doi: 10.1016/s1473-3099(16)30271-7

356. Trembizki E, Wand H, Donovan B, Chen M, Fairley CK, Freeman K, Guy R, Kaldor JM, Lahra MM, Lawrence A, Lau C, Pearson J, Regan DG, Ryder N, Smith H, Stevens K, Su JY, Ward J and Whitley DM. The Molecular Epidemiology and Antimicrobial Resistance of *Neisseria gonorrhoeae* in Australia: A Nationwide Cross-Sectional Study, 2012. *Clinical Infectious Diseases*. 2016; 63: 1591-8. doi: 10.1093/cid/ciw648

357. Trubiano JA, Worth LJ, Urbancic K, Brown TM, Paterson DL and Lucas M. Return to sender: the need to re-address patient antibiotic allergy labels in Australia and New Zealand. *Internal Medicine Journal*. 2016; 46: 1311-7.

358. Tuong ZK, Fitzsimmons R, Wang SCM, Oh TG, Lau P, Steyn F, Thomas G and Muscat GEO. Transgenic Adipose-specific Expression of the Nuclear Receptor ROR alpha Drives a Striking Shift in Fat Distribution and Impairs Glycemic Control. *Ebiomedicine*. 2016; 11: 101-17. doi: 10.1016/j.ebiom.2016.08.027

359. Ulm L, Copland DA and Meinzer M. A new era of systems neuroscience in aphasia? *Aphasiology*. 2016; 1-23.

360. Upadhyaya A, Smith RA, Chacon-Cortes D, Revechon G, Bellis C, Lea RA, Haupt LM, Chambers SK, Youl PH and Griffiths LR. Association of the microRNA-Single Nucleotide Polymorphism rs2910164 in miR146a with sporadic breast cancer susceptibility: A case control study. *Gene*. 2016; 576: 256-60. doi: 10.1016/j.gene.2015.10.019

361. Vailati-Riboni M, Kanwal M, Bulgari O, Meier S, Priest NV, Burke CR, Kay JK, McDougall S, Mitchell MD, Walker CG, Crookenden M, Heiser A, Roche JR and Looor JJ. Body condition score and plane of nutrition prepartum affect adipose tissue transcriptome regulators of metabolism and inflammation in grazing dairy cows during the transition period. *Journal of Dairy Science*. 2016; 99: 758-70. doi: 10.3168/jds.2015-10046

362. Vailati-Riboni M, Meier S, Burke CR, Kay JK, Mitchell MD, Walker CG, Crookenden MA, Heiser A, Rodriguez-Zas SL, Roche JR and Looor JJ. Prepartum body condition score and plane of nutrition affect the hepatic transcriptome during the transition period in grazing dairy cows. *BMC Genomics*. 2016; 17. doi: 854 10.1186/s12864-016-3191-3

363. van den Hoorn W, Coppieters MW, van Dieen JH and Hodges PW. Development and validation of a method to measure lumbosacral motion using ultrasound imaging. *Ultrasound in Medicine and Biology*. 2016; 42: 1221-9.

364. van Duin D and Paterson DL. Multidrug-resistant bacteria in the community trends and lessons learned. *Infect Dis Clin N Am*. 2016; 30: 377-+.

365. van Wijngaarden JB, Zucca R, Finnigan S and Verschure P. The Impact of Cortical Lesions on Thalamo-Cortical Network Dynamics after Acute Ischaemic Stroke: A Combined Experimental and Theoretical Study. *PLoS Comput Biol*. 2016; 12. doi: e1005048 10.1371/journal.pcbi.1005048

366. Villani R, Sim SL, Greaney J, Wainwright B and Khosroteh-

- rani K. Basal cell carcinoma development is promoted by ablation of the dermal papilla mesenchymal niche. *Australasian Journal of Dermatology*. 2016; 57: 6-.
367. Wailan AM, Paterson DL, Kennedy K, Ingram PR, Bursle E and Sidjabat HE. Genomic Characteristics of NDM-Producing Enterobacteriaceae Isolates in Australia and Their bla(NDM) Genetic Contexts. *Antimicrob Agents Ch*. 2016; 60: 136-41. doi: 10.1128/aac.01243-15
368. Wailan AM, Sidjabat HE, Yam WK, Alikhan NF, Petty NK, Sartor AL, Williamson DA, Forde BM, Schembri MA, Beatson SA, Paterson DL, Walsh TR and Partridge SR. Mechanisms Involved in Acquisition of bla(NDM) Genes by IncA/C-2 and IncFII(Y) Plasmids. *Antimicrob Agents Ch*. 2016; 60: 4082-8. doi: 10.1128/aac.00368-16
369. Wali G, Sutharsan R, Fan YJ, Stewart R, Velasquez JT, Sue CM, Crane DI and Mackay-Sim A. Mechanism of impaired microtubule-dependent peroxisome trafficking and oxidative stress in SPAST-mutated cells from patients with Hereditary Spastic Paraplegia. *Scientific Reports*. 2016; 6. doi: 27004 10.1038/srep27004
370. Walker CG, Crookenden MA, Henty KM, Handley RR, Kuhn-Sherlock B, White HM, Donkin SS, Snell RG, Meier S, Heiser A, Loor JJ, Mitchell MD and Roche JR. Epigenetic regulation of pyruvate carboxylase gene expression in the postpartum liver. *Journal of Dairy Science*. 2016; 99: 5820-7. doi: 10.3168/jds.2015-10331
371. Westermeier F, Saez T, Arroyo P, Toledo F, Gutierrez J, Sanhueza C, Pardo F, Leiva A and Sobrevia L. Insulin receptor isoforms: an integrated view focused on gestational diabetes mellitus. *Diabetes-Metab Res*. 2016; 32: 350-65. doi: 10.1002/dmrr.2729
372. Wigginton B, Harris ML, Loxton D and Lucke JC. A qualitative analysis of women's explanations for changing contraception: the importance of non-contraceptive effects. *Journal of Family Planning and Reproductive Health Care*. 2016; 42: 256-62. doi: 10.1136/jfprhc-2015-101184
373. Williams RJ, Reutens DC and Hocking J. Influence of BOLD Contributions to Diffusion fMRI Activation of the Visual Cortex. *Frontiers in Neuroscience*. 2016; 10. doi: 27910.3389/fnins.2016.00279
374. Winter CD, Whyte T, Cardinal J, Kenny R and Ballard E. Re-exposure to the hypobaric hypoxic brain injury of high altitude: plasma S100B levels and the possible effect of acclimatisation on blood-brain barrier dysfunction. *Neurological Sciences*. 2016; 37: 533-9. doi: 10.1007/s10072-016-2521-1
375. Wixey JA, Chand KK, Colditz PB and Bjorkman ST. Neuroinflammation in intrauterine growth restriction. *Placenta*. 2016.
376. Xu ZW, Henderson RD, David M and McCombe PA. Neurofilaments as Biomarkers for Amyotrophic Lateral Sclerosis: A Systematic Review and Meta-Analysis. *Plos One*. 2016; 11. doi: e0164625 10.1371/journal.pone.0164625
377. Yan J, Greer JM and McCombe PA. Interleukin 6 promoter 174 G/C polymorphisms in acute ischemic stroke: G allele is protective but not associated with IL-6 levels or stroke outcome. *J Neuroimmunol*. 2016; 293: 22-7. doi: 10.1016/j.jneuroim.2016.02.001
378. Yaxley JW, Coughlin GD, Chambers SK, Occhipinti S, Samaratunga H, Zajdlewicz L, Dunglison N, Carter R, Williams S, Payton DJ, Perry-Keene J, Lavin MF and Gardiner RA. Robot-assisted laparoscopic prostatectomy versus open radical retropubic prostatectomy: early outcomes from a randomised controlled phase 3 study. *Lancet*. 2016; 388: 1057-66. doi: 10.1016/s0140-6736(16)30592-x
379. Yaxley JW, Lah K, Yaxley JP, Gardiner RA, Samaratunga H and MacKean J. Long term outcome of high dose rate (HDR) brachytherapy for intermediate and high risk prostate cancer with a median follow up of 10 years. *British Journal of Urology International*. 2016. doi: 10.1111/bju.13659
380. Youlden DR, Baade PD, Soyer HP, Youl PH, Kimlin MG, Aitken JF, Green AC and Khosrotehrani K. Ten-Year Survival after Multiple Invasive Melanomas Is Worse than after a Single Melanoma: a Population-Based Study. *Journal of Investigative Dermatology*. 2016; 136: 2270-6. doi: 10.1016/j.jid.2016.03.014
381. Youlden DR, Khosrotehrani K, Green AC, Soyer HP, Kimlin MG, Youl PH, Aitken JF and Baade PD. Diagnosis of an additional in situ melanoma does not influence survival for patients with a single invasive melanoma: A registry-based follow-up study. *Australasian Journal of Dermatology*. 2016; 57: 57-60. doi: 10.1111/ajd.12429
382. Youssef D, Vasani S, Marquess J and Cervin A. Rising incidence of head and neck mucosal melanoma in Australia. *The Journal of Laryngology & Otology*. 2016: 1-4. doi: 10.1017/S0022215116009385
383. Zhang S, Dissanayaka NNW, Dawson A, O'Sullivan JD, Mosley P, Hall W and Carter A. Management of impulse control disorders in Parkinson's disease. *International Psychogeriatrics*. 2016; 28: 1597-614.
384. Zhang SS, Dissanayaka NNW, Dawson A, O'Sullivan JD, Mosley P, Hall W and Carter A. Management of impulse control disorders in Parkinson's disease. *International Psychogeriatrics*. 2016; 28: 1597-614. doi: 10.1017/s10461021600096x



THE UNIVERSITY
OF QUEENSLAND
AUSTRALIA

Centre for
Clinical Research

